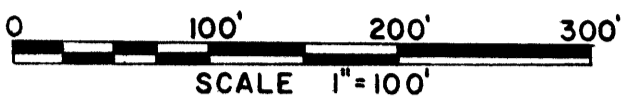
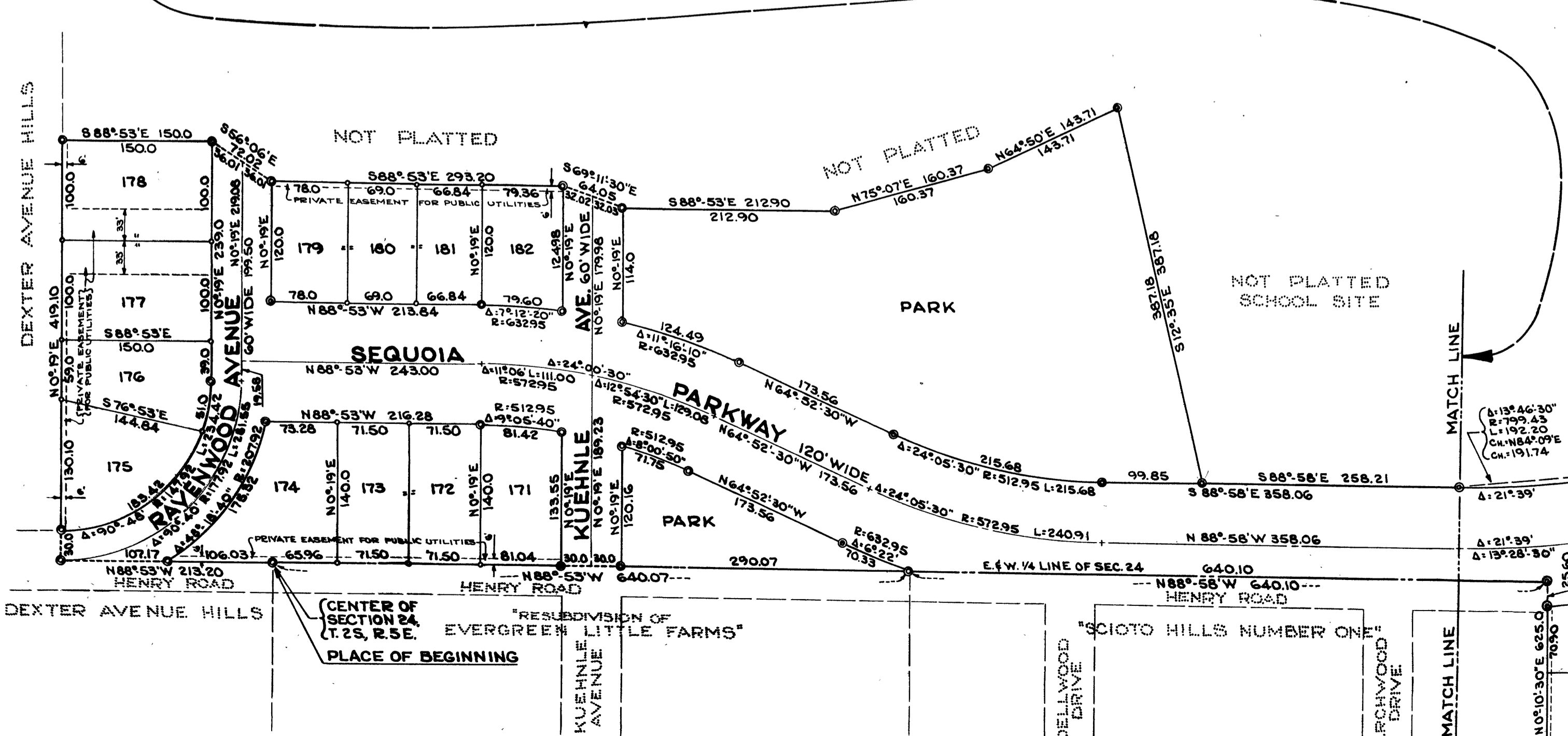
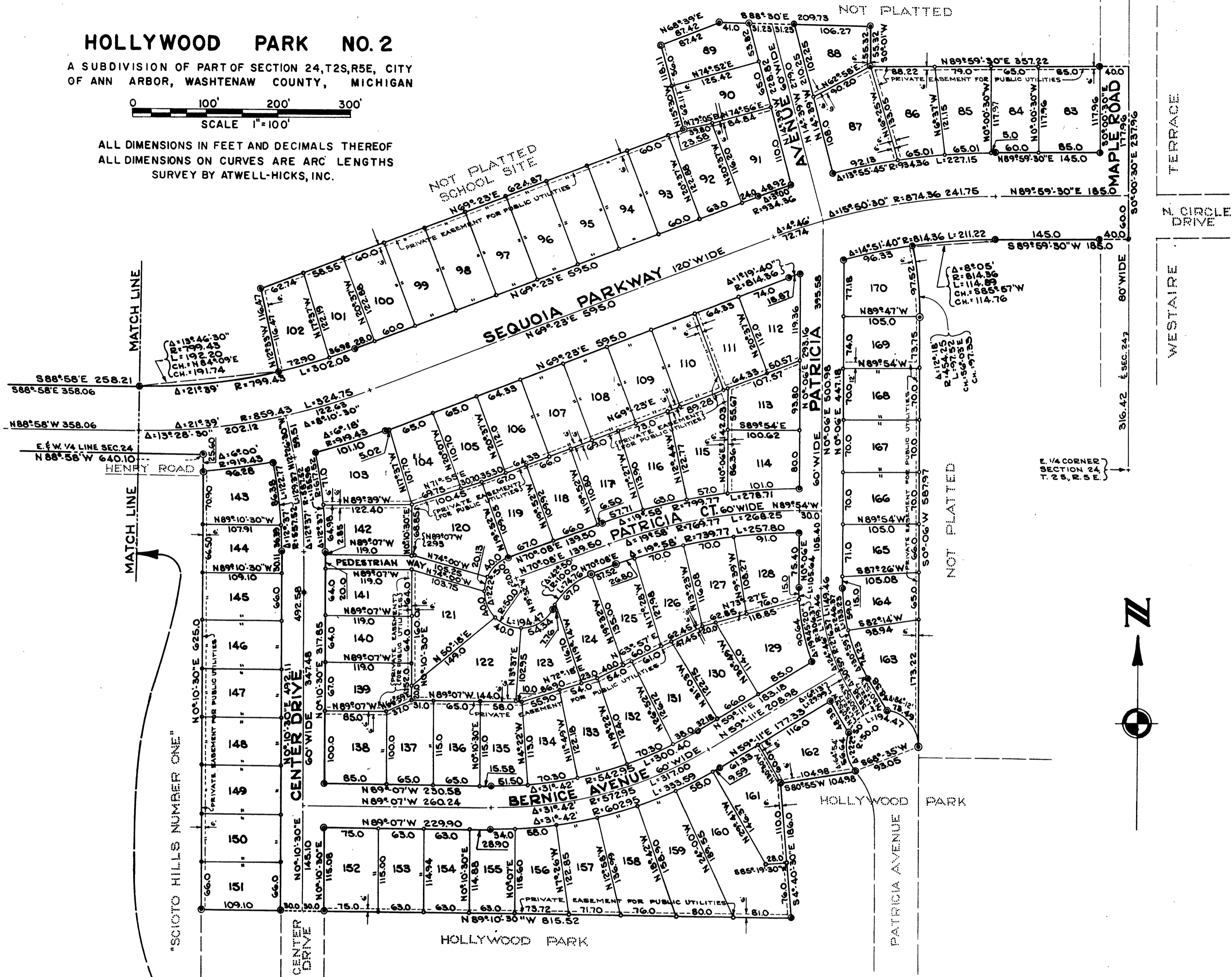


HOLLYWOOD PARK NO. 2

A SUBDIVISION OF PART OF SECTION 24, T2S, R5E, CITY OF ANN ARBOR, WASHTENAW COUNTY, MICHIGAN



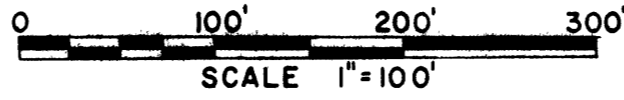
ALL DIMENSIONS IN FEET AND DECIMALS THEREOF
 ALL DIMENSIONS ON CURVES ARE ARC LENGTHS
 SURVEY BY ATWELL-HICKS, INC.



CENTER OF SECTION 24, T.2S, R.5E.
 "RESUBDIVISION OF EVERGREEN LITTLE FARMS"
 PLACE OF BEGINNING

HOLLYWOOD PARK NO. 2

A SUBDIVISION OF PART OF SECTION 24, T2S, R5E, CITY OF ANN ARBOR, WASHTENAW COUNTY, MICHIGAN



DEDICATION

KNOW ALL MEN BY THESE PRESENTS, that we Daniel Young and Martha Young, his wife, Daniel Allen Laven and Elsie Laven, his wife, Frank J. Kennedy and Frances Kennedy, his wife, and Dorothy G. Kennedy, Divorcee, as proprietors and the Daniel Young Building Company, a Michigan Corporation by Daniel Young, President and Martha Young, Secretary-Treasurer, have caused the land embraced in the annexed plat to be surveyed, laid out and platted, to be known as HOLLYWOOD PARK NO. 2 a subdivision of part of Section 24, T2S, R5E, City of Ann Arbor, Washtenaw County, Michigan and that the Avenues, Court, Drive, Road, Parkway, Pedestrian Way and Parks as shown on said plat are hereby dedicated to the use of the public.

Signed and Sealed in the Presence of:

Niklos Weber Witness Daniel Young
Helen Adcock Witness Martha Young
Niklos Weber Witness Daniel Allen Laven
Niklos Weber Witness Elsie Laven
Thomas J. Reott Witness Frank J. Kennedy
Thomas J. Reott Witness Frances Kennedy

Signed and Sealed in the Presence of:

Niklos Weber Witness Daniel Young, President
Helen Adcock Witness Martha Young, Secretary-Treasurer
Kenneth C. Krull Witness Dorothy G. Kennedy

Signed and Sealed in the Presence of:

Kenneth C. Krull Witness Dorothy G. Kennedy
Niklos Weber Witness

ACKNOWLEDGEMENT

STATE OF FLORIDA)
MICHIGAN) ss.
MANATEE)
County of Manatee)

On this 1st day of April, 1961, before me, a Notary Public in and for said County, personally came the above named Daniel Young, Martha Young, Frank J. Kennedy, and Frances Kennedy, known to me to be the persons who executed the above dedication and acknowledged the same to be their free act and deed.

Robert E. Luedke
Notary Public, Manatee County, Florida
My Commission expires...

ACKNOWLEDGMENT

STATE OF Michigan)
County of Washtenaw) ss.

On this 23rd day of March, 1961, before me, a Notary Public in and for said County, personally came the above named Daniel Allen Laven and Elsie Laven, known to me to be the persons who executed the above dedication and acknowledged the same to be their free act and deed.

Niklos Weber
Notary Public, Washtenaw County, Michigan
My Commission expires March 24, 1964

ALL DIMENSIONS IN FEET AND DECIMALS THEREOF
ALL DIMENSIONS ON CURVES ARE ARC LENGTHS
SURVEY BY ATWELL-HICKS, INC.

ACKNOWLEDGMENT

STATE OF MICHIGAN)
County of Washtenaw) ss.

On this 24th day of March, 1961, before me, a Notary Public in and for said County, appeared Daniel Young and Martha Young to me personally known, who being each by me duly sworn, did say that they are the President and Secretary-Treasurer respectively of the Daniel Young Building Company, a Michigan Corporation, and that the seal affixed to said instrument is the Corporate Seal of said Corporation and that said instrument was signed and sealed in behalf of said Corporation by authority of its Board of Directors and the said Daniel Young and Martha Young acknowledged said instrument to be the free act and deed of said Corporation.

Niklos Weber
Notary Public, Washtenaw County, Michigan
My Commission expires March 24, 1964

DESCRIPTION OF LAND PLATTED

The land embraced in the annexed plat of HOLLYWOOD PARK NO. 2 a subdivision of part of Section 24, T2S, R5E, City of Ann Arbor, Washtenaw County, Michigan is described as follows:

Commencing at the center of Section 24, T2S, R5E, City of Ann Arbor, Washtenaw County, Michigan; thence along the E & W 1/4 line of said Section 24, N 88°-53' W 213.20 feet; thence N 0°-19' E 419.10 feet; thence S 88°-53' E 150.0 feet; thence S 56°-06' E 72.02 feet; thence S 88°-53' E 293.20 feet; thence S 69°-11'-30" E 64.05 feet; thence S 88°-53' E 212.90 feet; thence N 75°-07' E 160.37 feet; thence N 64°-50' E 143.71 feet; thence S 12°-35' E 387.18 feet; thence S 88°-58' E 258.21 feet; thence 192.20 feet in the arc of a circular curve concave to the North, radius 799.43 feet, chord N 84°-09' E 191.74 feet; thence N 12°-33' W 116.47 feet; thence N 69°-23' E 624.87 feet; thence N 15°-30' W 118.11 feet; thence N 68°-39' E 87.42 feet; thence S 88°-30' E 209.73 feet; thence S 0°-01' W 55.32 feet; thence N 89°-59'-30" E 357.22 feet; thence S 0°-00'-30" E 237.96 feet along the east line of said Section 24; thence S 89°-59'-30" W 185.0 feet; thence 114.89 feet in the arc of a circular curve concave to the South, radius 814.36 feet, chord S 85°-57' W 114.76 feet; thence 97.52 feet in the arc of a circular curve concave to the West, radius 454.25 feet, chord S 6°-03' E 97.33 feet; thence S 0°-06' W 587.97 feet; thence 194.47 feet in the arc of a circular curve concave to the SE, radius 50.0 feet, chord S 68°-35' W 93.05 feet; thence S 80°-55' W 104.98 feet; thence S 4°-40'-30" E 186.0 feet; thence N 89°-10'-30" W 815.52 feet; thence N 0°-10'-30" E 625.0 feet; thence N 88°-58' W 640.10 feet along the E & W 1/4 line of said Section 24; thence continuing along said E & W 1/4 line, N 88°-53' W 640.07 feet to the Place of Beginning, containing 99 lots numbered 83 through 182 inclusive and 2 Parks.

SURVEYOR'S CERTIFICATE

I hereby certify that the plat hereon delineated is a correct one and that permanent metal monuments consisting of bars not less than one-half inch in diameter and 36 inches in length, or shorter bars of not less than one-half inch in diameter lapped over each other at least 6 inches with an over-all length of not less than 36 inches, encased in a concrete cylinder at least 4 inches in diameter and 36 inches in depth have been placed at points marked thus (⊙) as thereon shown at all angles in the boundaries of the land platted, at all the intersections of streets, intersections of alleys, or of streets and alleys, and at the intersections of streets and alleys with the boundaries of the plat as shown on said plat.

Gordon T. Hodgson
Registered Land Surveyor # 10061

ACKNOWLEDGEMENT

STATE OF)
County of Washtenaw) ss.

On this 24th day of March, 1961, before me, a Notary Public in and for said County, personally came the above named Dorothy G. Kennedy, known to me to be the person who executed the above dedication and acknowledged the same to be her free act and deed.

Niklos Weber
Notary Public, Washtenaw County,

My Commission expires March 24, 1964

CERTIFICATE OF APPROVAL BY THE CITY PLANNING COMMISSION

This plat was approved by the Planning Commission of the City of Ann Arbor, Michigan at a meeting held on the 12th day of April, 1961.

I hereby certify this copy is a true copy of map or plat forwarded the Register of Deeds for recording.

Date May 4, 1961
FILED IN AUDITOR GENERAL'S DEPT.
Date May 9, 1961
EXAMINED AND APPROVED
Date May 4, 1961

Richard A. Ware
Richard A. Ware, Chairman
William J. Bott
William J. Bott, Secretary

CERTIFICATE OF MUNICIPAL APPROVAL

This plat was approved by the Common Council of the City of Ann Arbor at a meeting held April 17, 1961, and that the width of lots is in compliance with requirements of Section 30, Act 172, of 1929, as amended.

Register's Office
Washtenaw County
Plat of
Hollywood Park No. 2
was Recorded this 5th day of
May, A.D., 1961 at 3:03 o'clock
p.m. in Liber 15 of plate
on Page 54-55
Patricia Newkirk Hardy
ORIGINAL ON FILE
COUNTY TREASURER'S CERTIFICATE
Office of County Treasurer, Washtenaw County

Fred J. Locker
Fred J. Locker, Clerk

I hereby certify, that there are no tax liens or titles held by the State on the lands described hereon, and that there are no tax liens or titles held by individuals on said lands for the five years preceding the 27th day of April, 1961, and that the taxes for said period of five years are all paid, as shown by the records of this office. This certificate does not apply to taxes, if any, now in process of collection by township, city or village collecting officers.

W.F. Verner (County Treasurer)

APPROVAL BY COUNTY PLAT BOARD

This plat was approved on the 28th day of April, 1961 by the Washtenaw County Plat Board.

Patricia Newkirk Hardy John H. Flook
(County Register of Deeds) (County Drain Commissioner)
J. Martin Rempop Herbert G. Loeffler
(Auditor) (Auditor)

John P. Cook
(Auditor)