

Introduction

The following pages document the appearance of the five proposed downtown Ann Arbor Historic Districts as of late 1988, early 1989. In order to provide a better understanding of the environmental character of the area, the Report shows each building as part of its blockscape. The pages are arranged in alphabetical order by street name. For streets running north/south, the blockscapes begin on the east side, proceed south to the edge of the proposed boundaries and then return northward up the west side of that street. The procedure is the same for east/west streets, beginning on the north and working westward. Each blockscape indicates the particular historic district proposed as well.

Where a building fronts on another street, its address is given in parentheses. A single asterisk beside an address indicates a proposed Significant Historic structure. A double asterisk indicates a structure that has

already been designated. An (N) indicates a Non-Contributing Structure. All remaining structures would be considered Complementary Historic Structures. Specific information on each address is as follows:

Date of Construction - where an older building has a modern or later facade, the date of the later facade was used only if it replaced the original one. In some cases the earlier date is given in parenthesis. If the original facade remains intact underneath the new facade, the earlier date was used instead. Where a building was moved to an address from an unknown location, the date is based on style and the first date at that address is given in parenthesis below the first known occupant.

Original Occupant - only the name of the first known commercial tenant is given for commercial buildings, not

those of upper floors.

Current Occupant - as of February, 1989.

Architectural Style - where the original facade has been completely remodeled in a contemporary style, it is classified as modern.

Number of Stories - based on the appearance of the facade. Basements or hidden attics are not included.

Material - the basic material or covering of the exterior walls.

Window Type - referring only to upper stories for commercial buildings.

Special Details - distinguishing architectural features. Missing features or those that have obviously been altered are not mentioned.



19

*111

*113

*115

*117

*119

EAST ANN STREET (part I) Fourth/Ann Historic District

	1872	1872	1872	1872	1872
	Reynold Saloon	George Ellis Saloon	John Clair Saloon & Grocery		John Gould Saloon & Grocery
akos	Transameric Services	Title The Bessenberg Bindery Company	Le Minotaure Art Gallery	Freesia	A Cut Above
e	Italianate	Italianate	Italianate	Italianate	Italianate
	three	three	three	three	three
	brick	brick	brick	brick	brick
ig, four-	double-hung, four-over-four	double-hung, four-over-four	double-hung, four-over-four	double-hung, four-over-four	double-hung, four-over-four
ied with brick stone	round-arched windows with brick lintels, continuous stone sills	round-arched windows with brick lintels, continuous stone sills	round-arched windows with brick lintels, continuous stone sills	round-arched windows with brick lintels, continuous stone sills	round-arched windows with brick lintels, continuous stone sill



*201

(N)211

EAST ANN STREET (part II) Fourth/Ann Historic District

1836

1947

Bank of Washtenaw

Symons Bros & Co. Wholesale Grocery

apartments

Terry K. Lawrence Photography

Classical Revival

Modern

two

one

stucco over brick

brick

double-hung, one-over-one

fixed, single panes

Classical Revival doorway

none



117

** (122 W. Washington)

SOUTH ASHLEY STREET (east side, part I) Main Street Historic District

1976	c.1940	1869
Staebler & Co. Grocers (1906)		Wagner/Schneider Building Blacksmith Shop
Old German	Del Rio Bar	Del Rio Bar
Modern (rebuilt)	Commercial Vernacular	Italianate
three	three	three
brick	brick	brick
double-hung, one-over-one	double-hung, one- over-one	double-hung, four-over-four
remodeled 1970's	none	upper and lower cornice, round and segmented stone trim, arches, pilasters



W. Washington) 211

215-17

*(122 W. Liberty)

SOUTH ASHLEY STREET

(east side, part II) Main Street Historic District

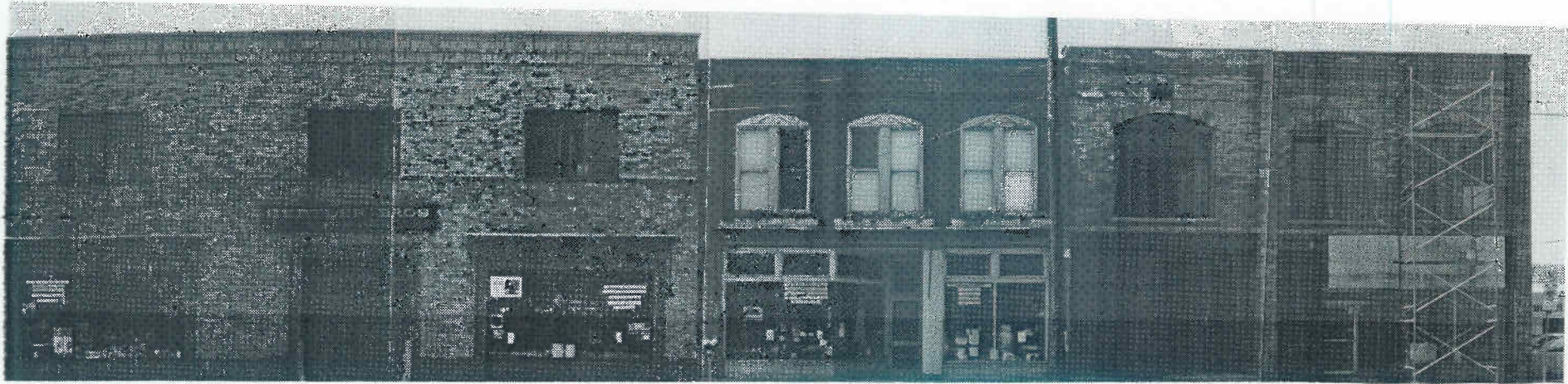
1885	1918	1914	c. 1868
Germania Hotel	Staebler & Son Garage	Schwaben Hall	Mogk Saloon
Cream Cafe Arbor Glassworks	Bird of Paradise Red Hots in Paradise	Hi-Fi Studio Ann Arbor	Old Town restaurant
Iran Eclectic	Commercial Vernacular	Commercial nacular	Italianate
	two	four	three
	brick	brick	brick
double-hung, one-over-	double-hung, one-over-one	double-hung, over-one	fixed, single pane
and lower segmented ce, stone trim, s, stone trim, ters	stone trim	stone trim [Ar- chitect George Scott]	lower cornice, stone trim, round and segmented arches



312 *310 308 304 300

SOUTH ASHLEY STREET (west side, part I) Main Street Historic District

1918	1906	1910	1906	1947
4's Garage	Second Ward Building	Graf & Harris sheet metal workers	Finkbinder blacksmith	Donald Reid restaurant
Music Annex	John & Mary Hathaway	unknown	H & R Block Income Tax	Fleetwood Diner
	Commercial Vernacular	Modern	Commercial Vernacular	Modern
	two	one	two	one
	brick	brick	brick	aluminum
single pane	double-hung, one- over-one	none	fixed, single pane	fixed, single pane
trim	plain arch, stone trim	brick arches	cornice, plain brick cornice	none



212-216

*210

208

206

SOUTH ASHLEY STREET

(west side, part II) Main Street Historic District

1910	1899	1899	1899
Hertler Brothers Agricultural Implements	Mann & Zeeb Agricultural Imports	M. Schaible Tavern	Meere G. Gates Meat Market
Hertler Bros.	Hertler Bros. Hardware	vacant	vacant
Commercial Vernacular 20th Century	Commercial Vernacular 19th Century	Commercial Vernacular 19th Century	Commercial Vernacular 19th Century
two	two	two	two
brick	brick	brick	brick
Steel casement	double-hung, one- over-one	multiple panes	fixed
tapestry brick and polychrome brick	plain arches, stone trim	plain arches, stone trim	plain arches, stone trim



311

(N)315

317

321

SOUTH DIVISION STREET

(east side, part I) East William Street Historic District

1890	1890	1970's	1860's	1871
Clarken fire-keeper	Alice Mayhew widow	apartments	Lena Rennie (1914)	Schuyler Grant cashier, Ann Arbor Savings
residence	residence	apartments	residence	residence
Queen Anne	Queen Anne	Modern	Italianate (remodeled)	Queen Anne
two-and-a-half	two-and-a-half	three	two	two-and-a-half
aluminum	aluminum	brick	aluminum	Front: clapboard and cut shingles Side: asphalt
double-hung, one-over-one	double-hung, one-over-one	single	double-hung, four-over- four	double-hung, one-over-one
front gable	front gable	flat	hipped	irregular
wrap-around porch	wrap-around porch	none	original upper sash	carved porch trim, bracketed three- story tower (1890), parlor bay, window hoods



327

331-3

335

339

345

SOUTH DIVISION STREET

(east side, part II) East William Street Historic District

c.1895	c.1895	c.1900	c.1885	(1865) 1908
1 Kittredge her, <u>Ann</u> <u>Register</u>	Sellick Wood corn & fruit merchant	John W. Hastings (1929)	George L. Moore	(James C. Allen) Arthur Nichols
residence	residence	residence	residence	residence
Colonial Revival	Vernacular	Vernacular	Queen Anne	Colonial Revival
two-and-a-half	two-and-a-half	two	two	two
clapboard	clapboard	clapboard	clapboard	clapboard
double-hung, one-over-one	double-hung, one-over-one	double-hung, three-over-one	double-hung, one-over-one	paired double-hung, one-over-one
side gable	side gable	double front gable	front gable	hipped
round bay, round bay, base corner	Matching square bays, center porch, left section added by 1931	vertical panes in upper sash, porch canopy, terrace	stone base, carved porch gable trim	window hoods, full porch, beveled glass, round topped front window



401

403



*409

SOUTH DIVISION STREET (east side, part III) East William Street Historic District

1886

1927

1913

Elom S. Worden

Earl Weitzel
motorman

First Church Christ Scientist

residence

residence

Friendship Baptist Church

Queen Anne

Modern

Colonial Revival/Prairie Style

two-and-a-half

two

one

wood shingle

brick

concrete

double-hung, one-over-one

multi-paned,
fixed

double-hung

cross-gable

hipped

center gable

fish scale shingling on
front over
gable

round arch
over front
door

classical detailing



410



*400(340 E. William)

SOUTH DIVISION STREET

(west side, part I) East William Street Historic District

1897

1860

Verner L. Snauble
bookkeeper Michigan Furniture Co.

Peleg & Arthur Marshall
carpenter/builder & architect

residence

Raja Rani
restaurant

Colonial Revival

Second Empire

two-and-a-half?

two-and-a-half

asphalt shingle

clapboard

double-hung, one-over-one

double-hung, one-over-one

front gable

mansard

none

elaborately carved brackets, dentils, dormers
with round topped windows, corner pilasters



*344

340

336

332

SOUTH DIVISION STREET

(west side, part II)

East William Street Historic District

1965

1919

1924

c.1875

Dahlmann Apartments

Ross Granger
City Treasurer

John W. Hastings
plumber

Elizabeth J. Hyde

apartments

residence

residence

residence

Modern

Vernacular

Craftsman

Italianate

three-and-a-half

two

two

two

brick

clapboard

wood shingle

stucco

metal sliding

fixed, single pane

double-hung,
five-over-one

double-hung,
one-over-one

flat

front gable

hipped

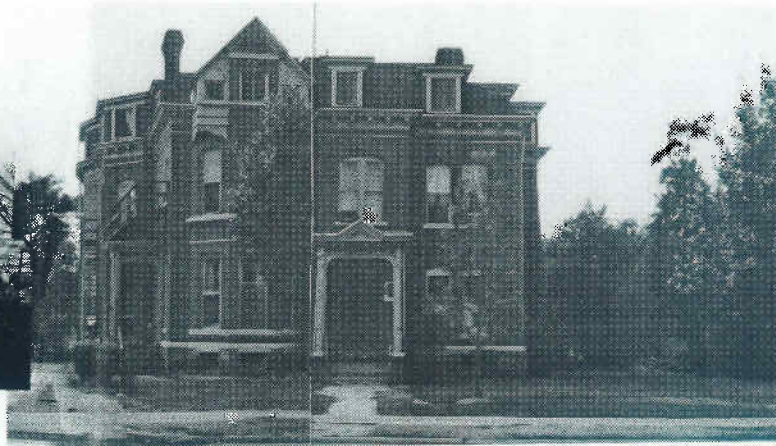
front gable

none

front porch, trim board
over upper windows

front porch, vertical
panes in upper sash,
hipped roof dormers

triple & paired
windows, bays on
sides and front



322

*320

**312

SOUTH DIVISION STREET

(west side, part III) East William Street Historic District

1892

1882

1853

Noble Carriage House

Alfred L. Noble
owner, Starr Clothing House

Henry DeWitt Bennett
Secretary and Steward, U-M

residence

residence

Kempf House Center for Local History

Second Empire

Queen Anne

Greek Revival

two

three

one-and-a-half

asbestos

brick

clapboard

double-hung, one-over-one

double-hung, six-over-six

mansard

hipped

front gable

decorative chimneys, arched upper sash,
carved wood details on porches, verge
boards, gable corners, brackets, eaves

portico with full pediment and square
anta piers, anthemion pattern cast iron
window grilles



307

311

311 1/2

SOUTH FIFTH AVENUE

(east side, part I)

East Liberty Historic Block

1914

1866

1914

Dr. Louis Rominger
office

Jacob F. Schuh,
Hardware (by 1892)

Dr. Elsie S. Pratt
Physician

Jerusalem Gardens
Restaurant

Karen DeKoning
Interior Decoration

residence

Classic Revival

Italianate

Bungalow

one

two

one and a half

concrete block, stucco

painted brick

stucco

hidden by storefront

double-hung, one over-one

double-hung, one-over-one

flat, front gable

hipped

side gable

gable returns

double brackets, bay window

recessed porch



403



402-4 (214 E. William)

FIFTH AVENUE (east side, part II) East William Street Historic District ; (west side, part I)

1894

William J. Merkle, sec./treasurer,
Krause Tanning Co.

residence

Queen Anne

two-and-a-half

wood

double-hung, one-over-one

hipped

bracketed gable, king post trim, window
hoods, Colonial porch

1883

George E. Bliss, baggageman
Lauren L. Henion, travel agent

residence (Needlepointe Tree)

Colonial Revival

two-and-a-half

brick and wood shingle

double-hung, one-over-one

side gabled

double colonial porch



221-93

SOUTH FIFTH AVENUE (west side, part II) Main Street Historic District

1917

Bunting Dentists; Mackenzie, Washburn &
Darling Physicians

East Liberty Plaza ---various tenants

Commercial Palace

two

brick

single

upper cornice, stone trim, terracotta,
tapestry brick



(N)208-10

(N)206

(220 E. Washington)

SOUTH FIFTH AVENUE (west side, part III) Main Street Historic District

1960's	c.1980	1927
The Fifth Forum Movie Theater	Federal Center	Salvation Army
Ann Arbor (Movie) Theatre	Federal Center	Artrain
Modern	Modern	Collegiate Gothic
two	five	three
brick	brick	brick
fixed pane	fixed pane	fixed pane
none	none	stone trim, buttresses, quoins



**120(219-23 E. Washington)

SOUTH FIFTH AVENUE (west side, part IV) Main Street Historic District

1870's

Ja. Brown Groceries

rental complex---various tenants

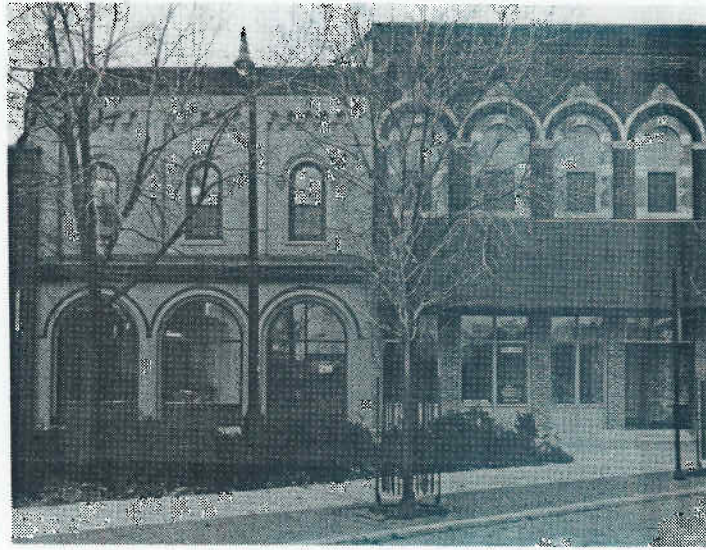
Italianate

two

brick

double-hung, one-over-one

upper cornice, round arches, pilasters, stone
trim



218

214

NORTH FOURTH AVENUE (east side, part I) Fourth/Ann Historic District

1870's

1888

Eisele Grocers

Zachman's Meat Market

Fera

Eyemedia

Italianate

Late Italianate

two

two

brick

brick

double-hung, one-over-one

double-hung, one-over-one

round arches

round arches, stone trim, pilasters



212

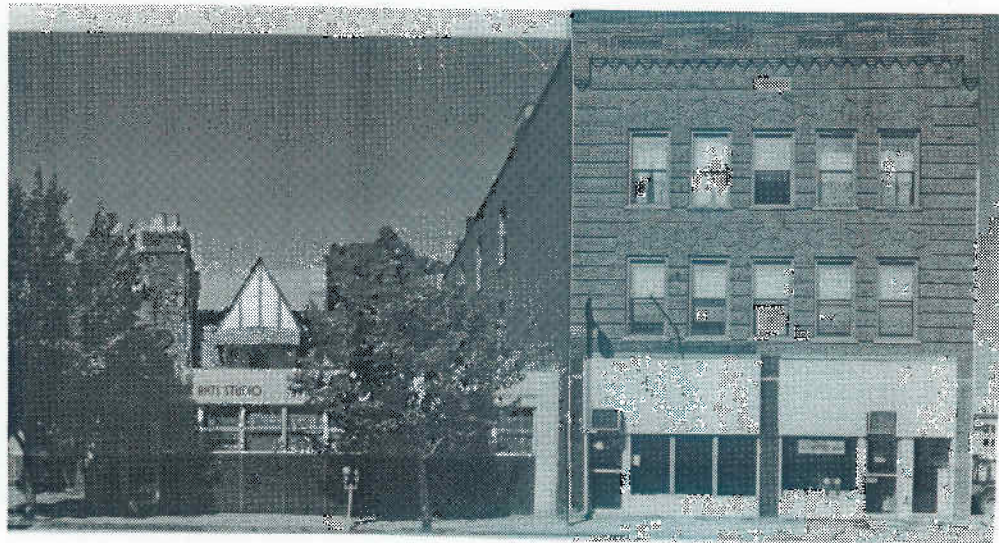
210-208

*206

*200

NORTH FOURTH AVENUE (east side, part II) Fourth/Ann Historic District

1894	1895	1880's	1835
<p>le Block</p> <p>le's Food Coop.</p> <p>Romanesque</p> <p>k</p> <p>d, single pane</p> <p>r cornice, wide arch</p>	<p>J. Eisele Groceries Kenny & Quinlan Plumbers</p> <p>Wildflower Community Bakery</p> <p>Late Romanesque</p> <p>two</p> <p>brick, stone</p> <p>double-hung, one-over-one</p> <p>wide arches, stone pilasters</p>	<p>Arlington Block</p> <p>Crazy Wisdom</p> <p>Commercial Vernacular</p> <p>two</p> <p>scored stucco over brick</p> <p>double-hung, one-over-one</p> <p>upper cornice</p>	<p>Bank of Washtenaw</p> <p>Wooden Spoon Books</p> <p>Classic Revival</p> <p>two</p> <p>scored stucco over brick</p> <p>double-hung, one-over-one</p> <p>upper cornice</p>



201-207

**209-211

NORTH FOURTH AVENUE (west side) Fourth/Ann Historic District

1930

1899

Washtenaw Mutual Oil Co.

Kayser Block

Shodo Corp.
Asian Martial Arts Studio

Vacant
Hall's Barber shop

Tudor Revival with Modern
front addition

Commercial Vernacular

two (rear)

three

brick

brick

fixed, single pane

double-hung, one-over-one

chimney, half-timbering

brick cornice, tapestry brick



(200 E. Huron)

**111

113

SOUTH FOURTH AVENUE (east side, part I) Main Street Historic District

b.1853

1870's

b.1892

Slawson & Geer
groceries and provisions

Heinrich Bldg.
Maulbetsch Saloon

Seybold Blacksmith

Embassy Hotel

DeLoof Limited

vacant

Italianate (covered)

Italianate

Italianate

three

three

three

metal facing

brick

brick

double-hung, one-over-one

double-hung, four-over-four

double-hung, one-over-one

none

upper cornice, round &
segmented arches, stone
trim

round and segmented arches,
stone trim



*117-19 (201 E. Washington)

SOUTH FOURTH AVENUE (east side, part II) Main Street Historic District

1892

Hutzel Meats

Custom Design

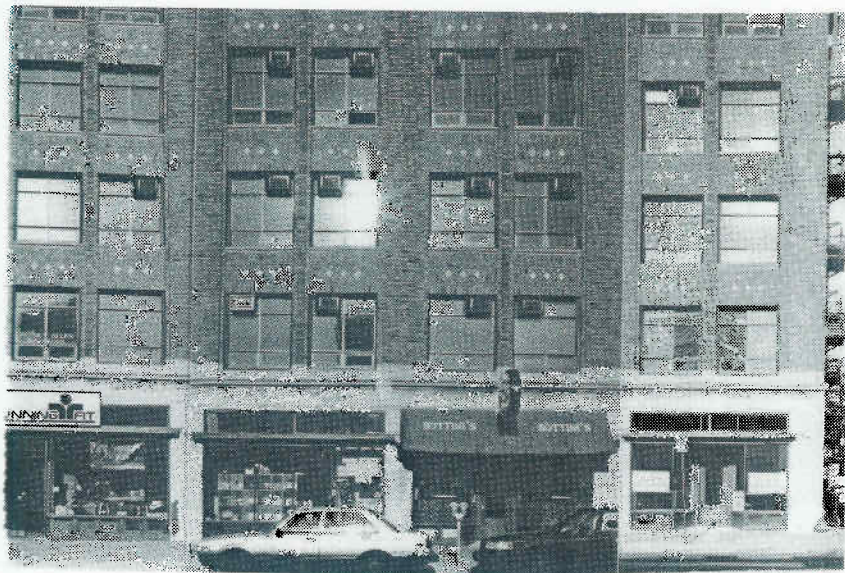
19th Century Romanesque

two

brick

double-hung, one-over-one

brick cornice, plain arch, stone trim, tower



*201-207

209

211

213

215

SOUTH FOURTH AVENUE

(east side, part III) Main Street Historic District

1928

1897

1899

1888

1888

Ann Building

O.M. Martin
undertaker

Robison &
Co.
Carriage
Livery Room

Ann Arbor
Steam
Laundry

Ann Arbor
Steam
Laundry

Ann Fit
Ann's Sub Shop

House of
Sandwich

Capitol
Market

vacant

vacant

Commercial Vernacular

Commercial
Vernacular

Commercial
Vernacular

Commercial
Vernacular

Commercial
Vernacular

ten

two

two

two

two

brick

brick

brick

brick

brick

red, with small hoppers

multi-paned

single pane

single pane

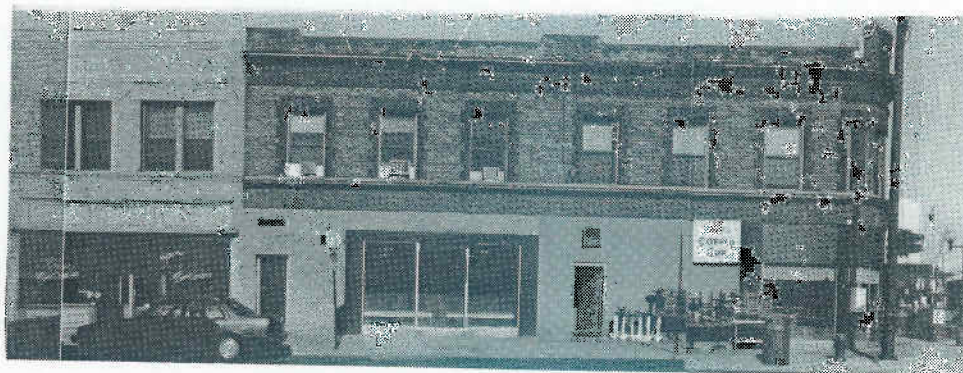
single pane

red brick, stone trim, lower cornice

brick
cornice

brick
cornice

plain arches



217

(201-5 E. Liberty)

SOUTH FOURTH AVENUE (east side, part IV) Main Street Historic District

1930

1906

E.J. Clair Radios

Ann Arbor Home Bakery

O'Hair

Bill's Coffee Cup
Chelsea Flower Shop
Abracadabra

Commercial Vernacular

Commercial Vernacular

two

two

brick

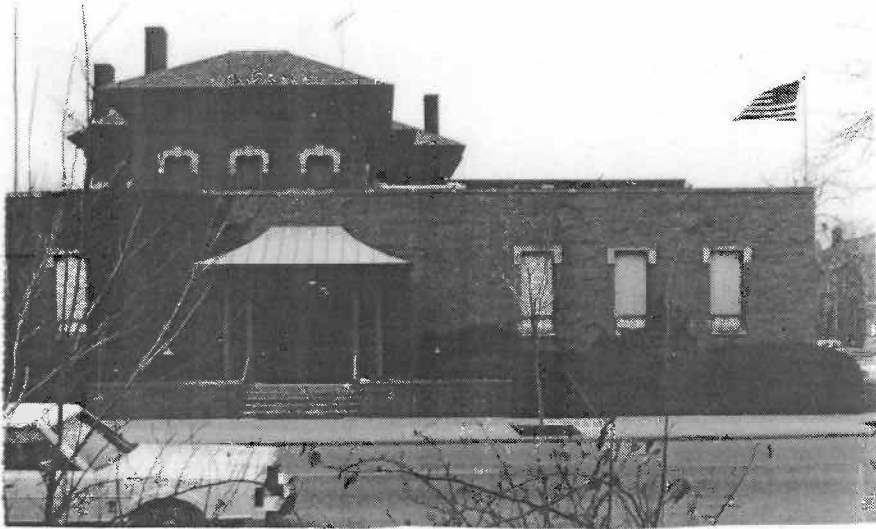
brick

double-hung, one-over-one

double-hung, one-over-one

tapestry brick

upper cornice, stone trim,
tapestry brick



*403-15

side, part V) **SOUTH FOURTH AVENUE**

c. 1875

Joseph T. Jacobs
clothier

Muehlig Funeral Chapel

Italianate

two

brick

double-hung, one-over-one

hipped

brackets, carved stone
window hoods



*402

(west side, part I) East William Street Historic District

c. 1880

Ottmar Eberbach
pharmacist, Eberbach & Sons

residence

Queen Anne

two-and-a-half

brick

double-hung, one-over-one

hipped and gabled

ornamental gables, brackets, stone
lintels



(N)(123 E. Liberty)

(N)216

(N)214

(N)212

(N)210

SOUTH FOURTH AVENUE (west side, part II) Main Street Historic District

1950's

1960's

Moran Optical

Fourth

Main

Arcade

Moran Optical Center

French Market Cafe

Pro-Print

Lisa's Tailoring

Business Matrix

Modern

Modern (replaced
c. 1915 facade)

Modern (replaced
c. 1915 facade)

Modern (replaced
c. 1915 facade)

Modern (replaced
c. 1915 facade)

one

two

two

two

two

brick

brick

brick

brick

brick

fixed, single panes

fixed

fixed

fixed

fixed

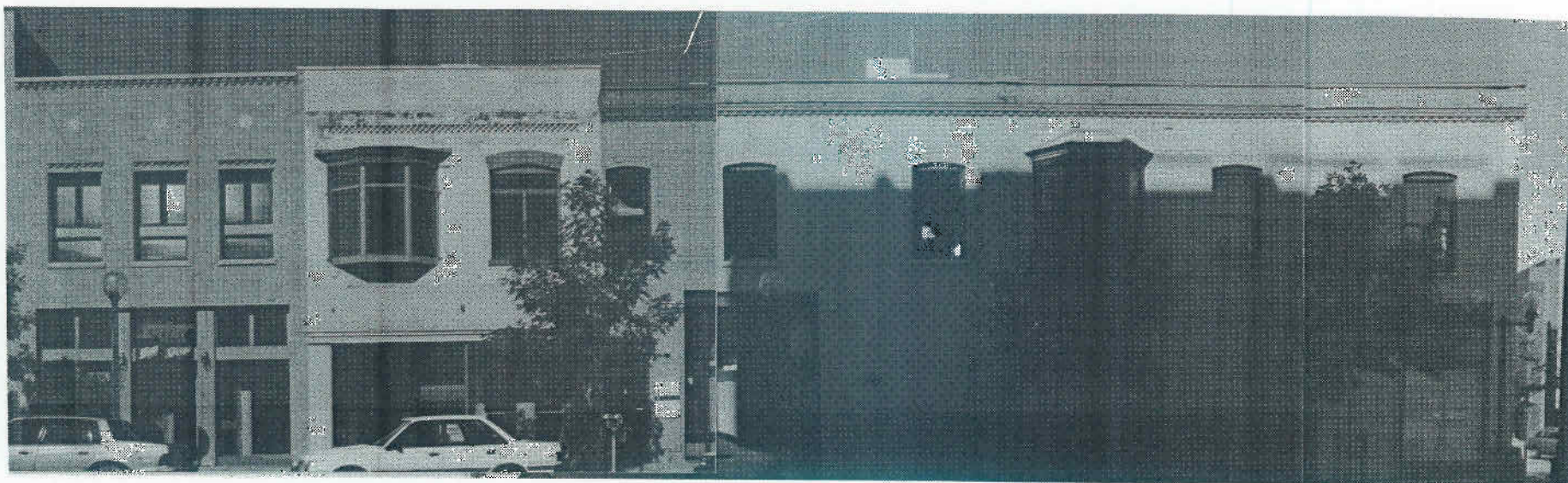
none

none

none

none

none



208

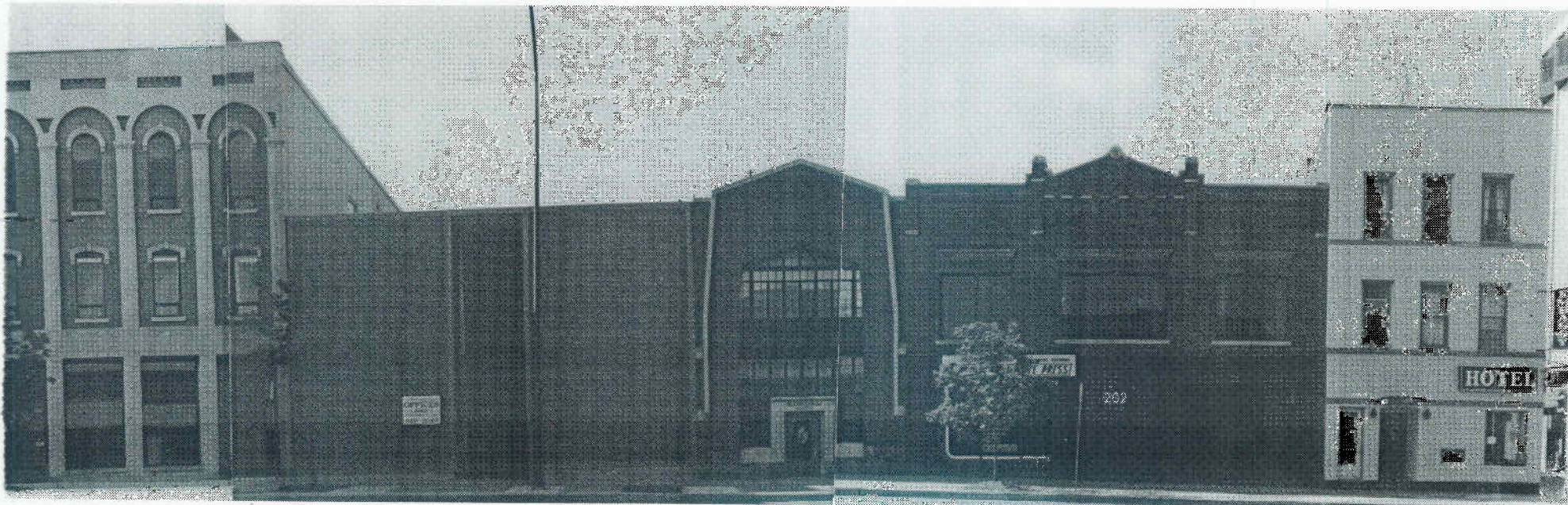
206

(124 E. Washington)

SOUTH FOURTH AVENUE

(west side, part III) Main Street Historic District

1907	1906	c.1900
Chilson & Harden- burg Hardware	C. Limpert Saloon	C. Rentschler milliner
American Speedy Printing	Whole Cloth	Northwestern Mutual Life
Commercial Vernacular	Commercial Vernacular	Commercial Vernacular
two	two	two
brick	brick	brick
fixed panes	fixed panes	double-hung, one-over-one
brick cornice, stone trim	plain arch, tapestry brick	brick cornice, stone trim



212-216

(N)208-210

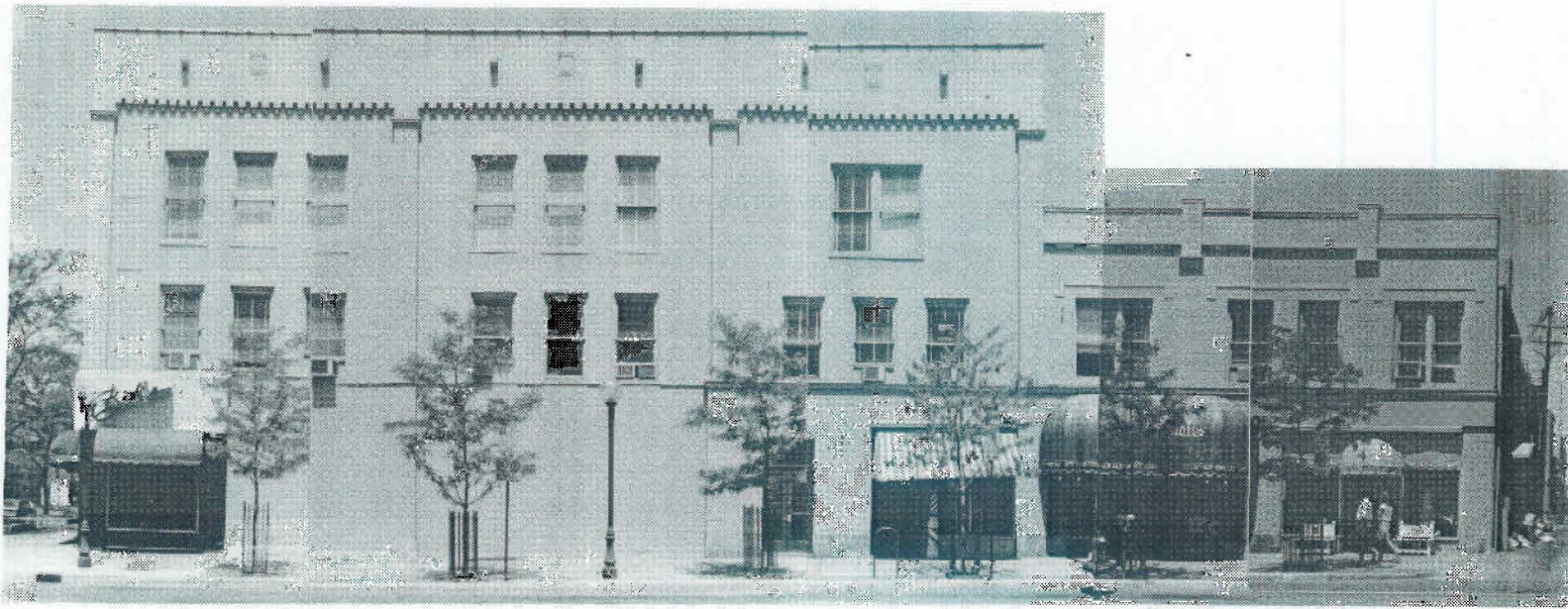
**206

202-204

200

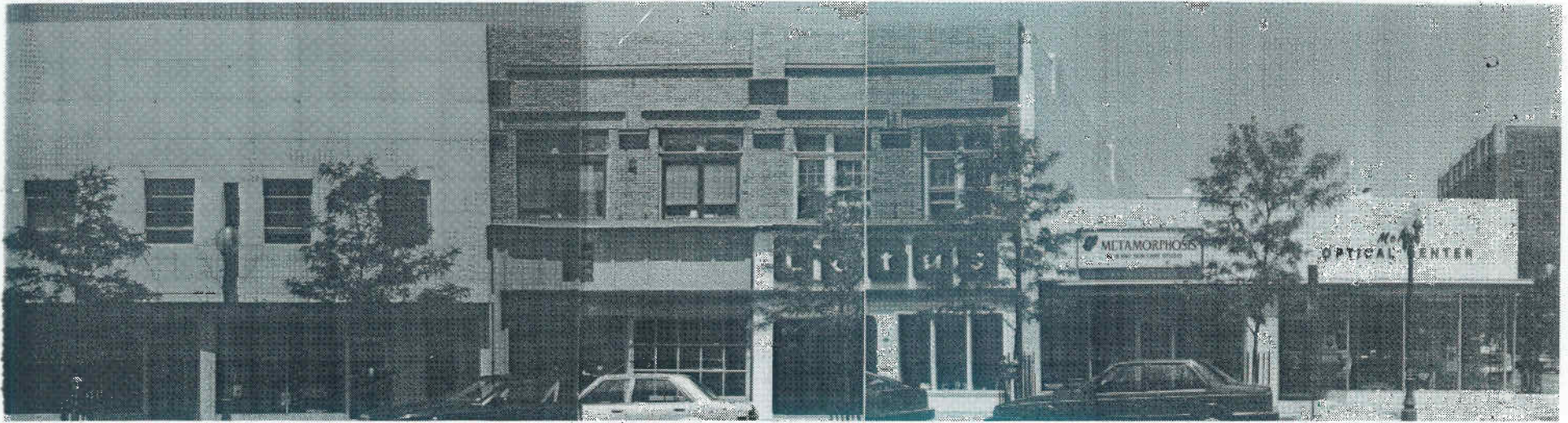
EAST HURON STREET Main Street Historic District

1867	1965	1931	1905	b.1853
n Block	Colvin, Robinson & Wright, architects	Ann Arbor Tribune	Eschelbach's Meat Market	Slawson & Geer grocers
Publications et.al.	Joseph C. Hooper, Jr., attorney	Kleinschmidt Insurance	International Minute Press	Embassy Hotel
ianate	Modern	Art Moderne	Commercial Vernacular	Late Italianate
e	two	two	two	three
k	brick	brick	brick	metal over brick
d with hopper	fixed	steel casements	fixed, double panes	double-hung, one-over-one
e trim, pilasters, d/segmented arches	none	stone trim, tapestry brick, bronze	brick cornice, stone trim	not discernable due to covered facade



*(223 S. Main) *103-105 *107 *109
 EAST LIBERTY STREET (north side, part I) Main Street Historic District

1869	1869	1907	1907
John Gerner grocer	Sophia Allmen- dinger, reside- nce	Phelps Lee barber	White Star Laundry
Beth's Boutique	Haner's Barber shop	Kilwin's Chocolates	PJ's Flower Shop
Italianate	Italianate	Commercial Vernacular	Commercial Vernacular
three	three	two	two
brick	brick	brick	brick
double-hung, one-over-one	double-hung, one-over-one	double-hung, one-over-one	double-hung, one-over-one
stone sills, brick corbelling	stone trim	brick cornice	brick cornice



(N)113 (N)115 117 119 (N)121 (N)123

EAST LIBERTY STREET (north side, part II) Main Street Historic District

1908	1908	1906-1908	1906-1908	1960's	1960's
Wanning & Koch, Jewelers	George Goodrich, millinery	V. M. Gauss shoemaker	J. Gillard The Theatorium	J.A. Schocter Kitchens	Moran Optical
King's Keyboard	King's Keyboard	Arbor Music Co.	Lotus Gallery	Metamorphosis	Moran Optical
Modern	Modern	Commercial Ver- nacular	Commercial Ver- nacular	Modern	Modern
two	two	two	two	one	one
porcelain panels	porcelain panels	brick	brick	brick	brick
fixed	fixed	fixed, single pane	double-hung, six-over-six	fixed, single pane	fixed, single pane
none	none	brick cornice, stone trim	brick cornice, stone trim	none	none



201 203 205 207 209 211

EAST LIBERTY STREET (north side, part III) Main Street Historic District

1906 1906 1911 1911 1906 1906

Ann Arbor Home Bakery Koch Brothers Decorators Washtenaw Home Telephone

Bill's Coffee Cup Chelsea Flower Shop Abracadabra Sam's Store, Inc. House of Frames Dobbs Optical

Commercial Vernacular Commercial Vernacular Commercial Vernacular Commercial Vernacular Commercial Vernacular Commercial Vernacular

two two two two two two

brick brick brick brick brick brick

double-hung, one-over-one double-hung, one-over-one double-hung, one-over-one double-hung, one-over-one double-hung, one-over-one double-hung, one-over-one

cornice, trim, brick — stone — detailing, oval window cornice, brick — detailing, transoms cornice, stone — trim



241

247

249

251

EAST LIBERTY STREET

(north side, part IV) Main Street Historic District

1915	1915	1915	1917	1917
E. Flanders, tailor, P. Flanders, florist	L. Hinckley, milliner	Zwerdling Block, Ladies' tailor	Darling Block Goodhew Florist	Fischer Pharmacy
Country Things	Country Things	Signed Designs	First Impression	Afternoon Delight
Commercial Vernacular	Commercial Vernacular	Commercial Vernacular	Commercial Vernacular	Commercial Vernacular
two	two	two	two	two
brick	brick	brick	brick	brick
double-hung, one-over- one	double-hung, one-over-one	double-hung, one-over-one	double-hung, one- over-one	double-hung, one-over-one
cornice, stone trim, tapestry brick	cornice, stone trim, tapestry brick	cornice, stone trim, tapestry brick	cornice, terracotta & stone trim	cornice, terracotta & stone trim



309

315

**321

325

EAST LIBERTY STREET

(north side, part V) East Liberty Historic Block

1987*

1890

1847

1888

Unknown (built c. 1890,
moved here 1907, C. A.
Rankin, tenant)

William F. Stimson
grocer

Enoch James

**Florence
L. Griswold**
Tenant 1894-5
(Widow)

Vahan's, Bead Gallery

Charisma

apartments

Collected Works

Modern over Queen Anne

Queen Anne

Classic Revival

Queen Anne

two

two

two

two

wood clapboard

wide aluminum clap-
board

unpainted brick

asbestos shingle

modern, wood, fixed pane

double-hung, wood,
one-over-one

double-hung, wood,
six-over-six

double-hung,
wood, one-over-
one

Fan details in front and
stepped back gables

Round tower, windows
with colored glass

Stepped gables,
classical entry, star
tie rod ends on sides

Front bay
window, corner
porch



**519

**523

**525

**529

**535

EAST LIBERTY STREET (north side, part VI) State Street Historic District

1927	1927	1927	1927	1927
Theater	Michigan Cleaners & Pressers	Michigan Recreation Bowling	Marilyn Shops	United Cigar Store
ds Records	Schoolkids Records	Shepard's Shoes	Albert's Copying	Albert's Copying
t. Romanesque	20th Cent. Romanesque	20th Cent. Romanesque	20th Cent. Romanesque	20th Cent. Romanesque
	two	two	two	two
	brick	brick	brick	brick
th hopper	fixed with hopper	fixed with hopper	fixed with hopper	fixed with hopper
ornice, tapestry stone trim	"	"	"	"



**539

**601

**603

**607-9

EAST LIBERTY STREET (north side, part VII) State Street Historic District

1927

1927

1927

1927

1927

Michigan
Cleaning Parlor

Hat

Maxroy
tionery

Confec-

Kay's Beauty Shop

Michigan Theater

The Michigamme
The Hut

SKR Classical

SKR Classical

John Leidy

Michigan Theater

John Leidy Shop

20th Century
Romanesque

20th Century
Romanesque

20th Century
Romanesque

20th Century
Romanesque

20th Century
Romanesque

two

two

two

two

two

brick

brick

brick

brick

brick

fixed with hopper

fixed with hopper

fixed with hopper

fixed with hopper

fixed with hopper

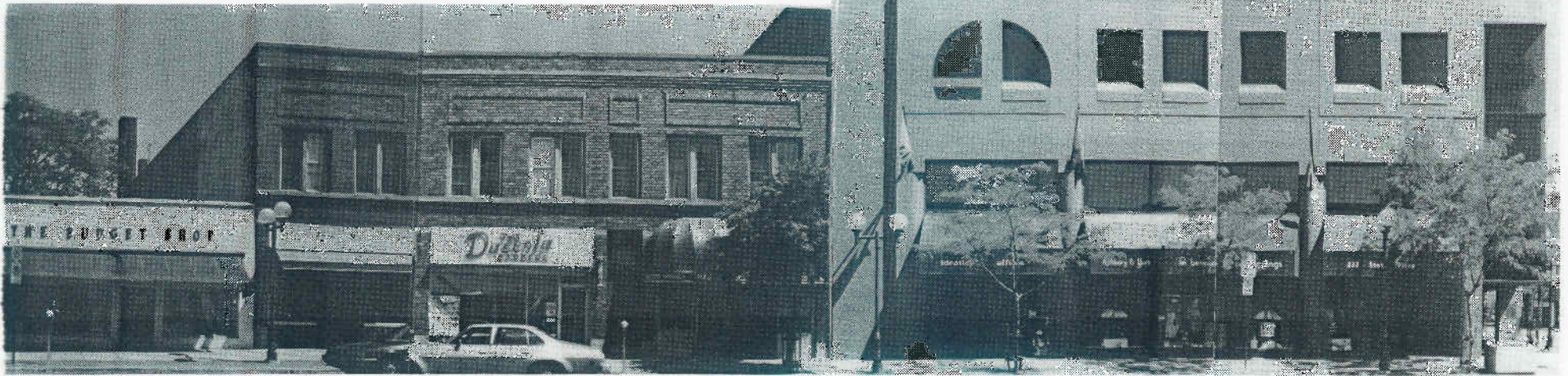
cornice, tapestry
brick, stone trim

cornice, tapestry
brick, stone trim

round arches, stone
trim, terracotta

round arches, stone
trim, terracotta

round arches, stone
trim, terracotta



N)611

613

617

619

(N)625

EAST LIBERTY STREET

(north side, part VIII) State Street Historic District

1949	1913	1909	1909	1983
Budget Shop	McDonald Confectioner	Sweigand Barbers	Longman Photo	State Street Plaza
Budget Shop	Suwanee Springs	Dascola Barbers	Mast Shoes	State Street Plaza
n	Commercial Vernacular	Commercial Vernacular	Commercial Vernacular	Modern
	two	two	two	three
	brick	brick	brick	brick
t, single pane	double-	hung,	one-over-one	fixed, single pane
	brick cornice,	stone trim,	tapestry brick	round pillars, inset sills



(300 S. State)

EAST LIBERTY STREET (south side, part I) State Street Historic District

1901

Bessemer Shoes

Discount Records

Commercial Vernacular

two

brick

double-hung, one-over-one

brick cornice, segmented
arches, pilasters



320

(N)314

310

306

302

EAST LIBERTY STREET (south side, part II) East Liberty Historic Block

c.1850	1949	1883*	1908	1908
Churchill H. Van Cleve, lawyer	VFW Hall	Melvin C. Peterson (*moved here 1907)	Albert Jedele, Carpenter	Joseph Parker, "Joe's" Saloon
Persian House of Imports	Seva Restaurant, Earth Wisdom Music	Evening Star Futons	Christian Science Reading Room	Herb David Guitar Studio
Classic Revival	Modern	Queen Anne	Colonial Revival	Dutch Colonial Revival
two	one	two	two	two
scored stucco over brick	lannan stone and blond brick	Asphalt imitation brick	wood clapboard	wood clapboard
double-hung, one-over-one	steel casement	double-hung, six-over-one	double-hung, one-over-one	double-hung, one-over-one
gable returns and wide fascia	none	transom and half-round windows colored glass	fan detail above attic windows in center gable	gambrel center gable, Palladian window, Ionic porch columns



122-120

118

116

EAST LIBERTY STREET (south side, part III) Main Street Historic District

1906

1906

1906

Martin Haller Furniture

Martin Haller Furniture

Martin Haller Furniture

Grandma Lee's

The Mole Hole

Liberty Street Video

Commercial Vernacular

Commercial Vernacular

Commercial Vernacular

three

three

three

brick

brick

brick

fixed, double-pane

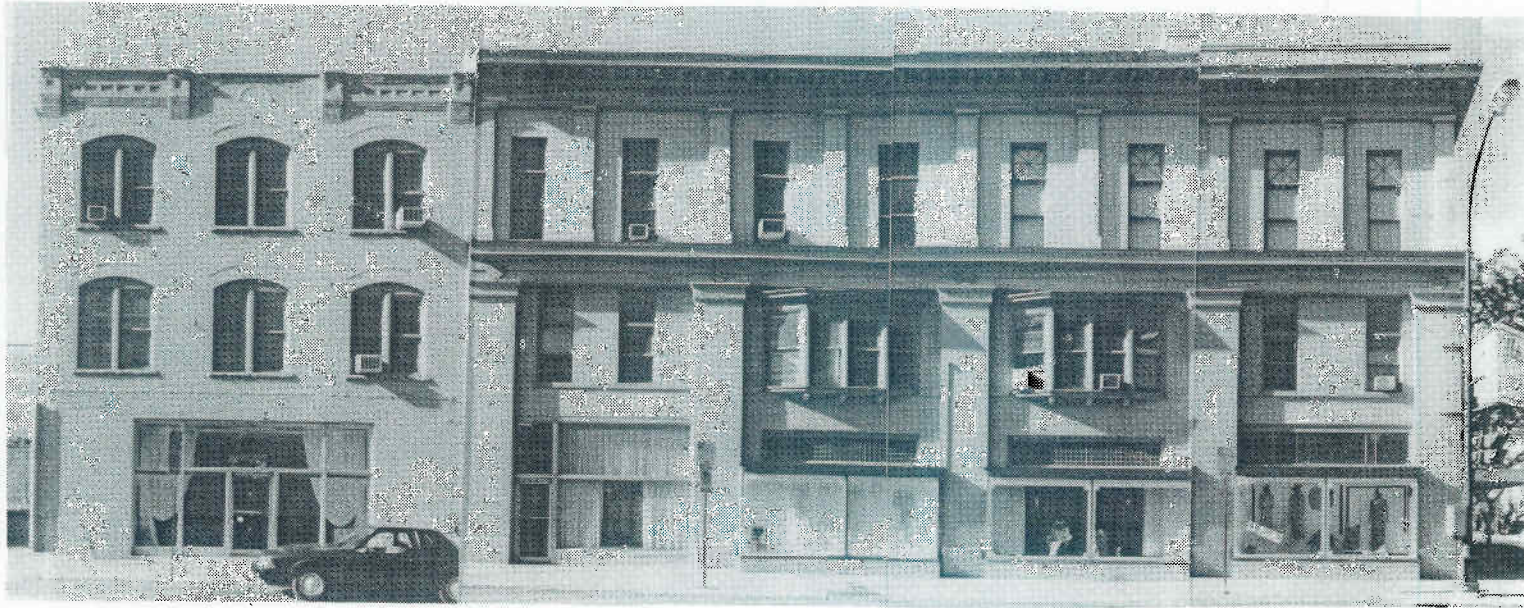
fixed, double-pane

fixed, double-pane

brick cornice, stone
trim

brick cornice, stone
trim

brick cornice, stone
trim



*110

*106(301 S. Main)

EAST LIBERTY STREET (south side, part IV) Main Street Historic District

1899

(1880) remodelled 1906

A.B. Hoxie Milliner

(J. Baumgartner) German/American Savings

Bay Design Group

Hutzel's

19th Cent. Romanesque

Colonial Revival

three

three

brick

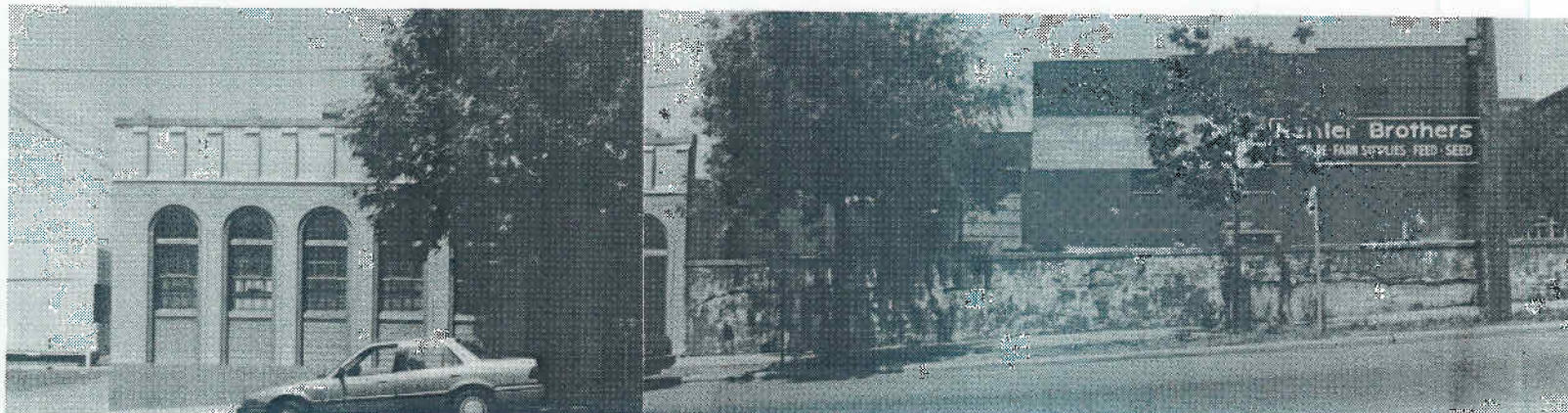
brick

double-hung,
one-over-one

double-hung, one-over-one

brick cornice, double
arches

cornices, pilasters, bay windows, star pattern muntins



208

(216 S. Ashley)

WEST LIBERTY STREET (north side, part I) Main Street Historic District

1930

1910

Labor Hall

Hertler Brothers Agricultural Implements

Architects Four Inc.; Iso Designs, Interior Design; Marge Greene, MSLO therapist; K.D. Thomas, Inc.

Hertler Brothers

Industrial

Industrial

one

two

brick

brick

steel casements

none on this facade

deep brick cornice, arched transoms, brick & stone trim

tapestry brick



*122 *120 *118 *116 *114 *112

WEST LIBERTY STREET (north side, part II) Main Street Historic District

70	1868	1866	1866	1866	1866	b.1866
aubengayer eed	Adam Schaeberle harness (res. same)	George Huss boots & shoes	George C. Mogk Saloon	George C. Mogk Saloon	Gottlob Laubengayer Agric. Implements	Charles Binder Saloon
	Mr. Flood's	Trattoria Ciao	Bella	Ehnis & Sons	The Round Table	Liberty Inn
e	Italianate	Italianate	Italianate	Italianate	Italianate	Italianate
	three	three	three	three	three	three
	brick	brick	brick	brick	brick	brick
ngle pane	double-hung, one- over-one	double-hung, one- over-one	double-hung, four- over-four	double-hung, four- over-four	double-hung, four- over-four	double-hung, four- over-four
nices,	stone trim,	round and	segmented arches	"	"	"



(226 S. Main)

WEST LIBERTY STREET (north side, part III) Main Street Historic District

1939

Cunningham's Drugs

Parthenon Restaurant

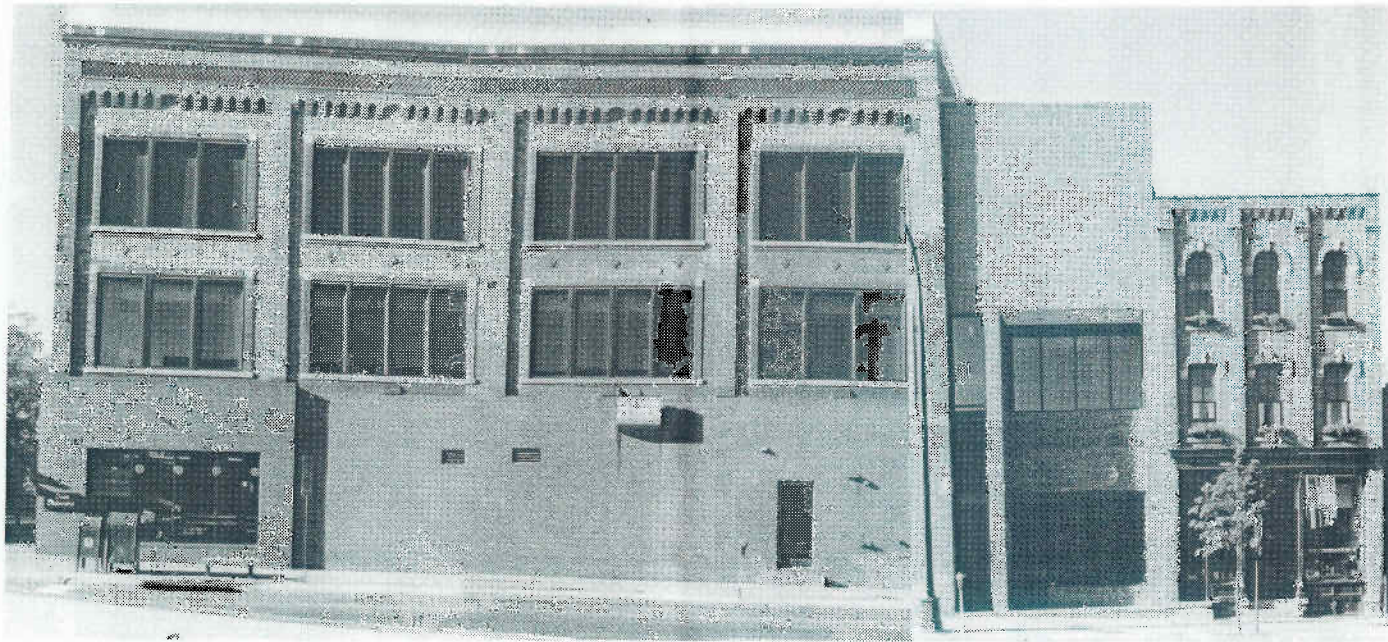
Art Moderne

one

porcelain enamel panels

fixed

chrome-banded front windows and marquee,
concave vertical panels on corner



(300 S. Main)

101

**111

WEST LIBERTY STREET

(south side, part I) Main Street Historic District

1881

1976

1879

Koch & Henne Furniture & Carpets

Downtown Racquet Club

Ludwig Walz, grocer, saloon

Dom Bakeries

Downtown Racquet Club

The Conservatory

Italianate (remodeled)

Modern

Italianate

three

three

three

brick

brick

brick

fixed, single pane

fixed, single pane

double-hung, four-over-four

tapestry brick, corbels

none

lower cornice, stone trim, pilasters, round & segmented arches, orig. storefront



**113 **115 **117-119 (303 S. Ashley)

WEST LIBERTY STREET (south side, part II) Main Street Historic District

1888	1893	1886	1920's
F. Haarer photographer	Walker Brothers	Walker Brothers carriages & wagons	Staebler Filling Station
West Side Bookshop	Rider's Hobby Shop	Ann Arbor Art Assoc.	Monroe Ltd.
Romanesque	Romanesque	Victorian Eclectic	Modern
three	three	three	one
brick	brick	brick	brick
double-hung, one-over-one	double-hung, one-over-one	double-hung, four-over-four	fixed
cornices, tapestry brick, stone trim, round arches	cornices, tapestry brick, stone trim, round arches	upper cornice, segmented arches, stone trim, pilasters	none