

Examined and Approved  
Jan. 18 1921  
J. L. Hume  
Auditor General

# ASSESSORS PLAT NO. 4 IN THE CITY OF ANN ARBOR WASHTENAW COUNTY MICHIGAN

### CERTIFICATE OF APPROVAL.

BY THE COMMON COUNCIL OF THE CITY OF ANN ARBOR,  
MICHIGAN.

This plat was approved by the Common Council of  
the City of Ann Arbor, Michigan, at a meeting  
held December 20<sup>th</sup>, 1920.

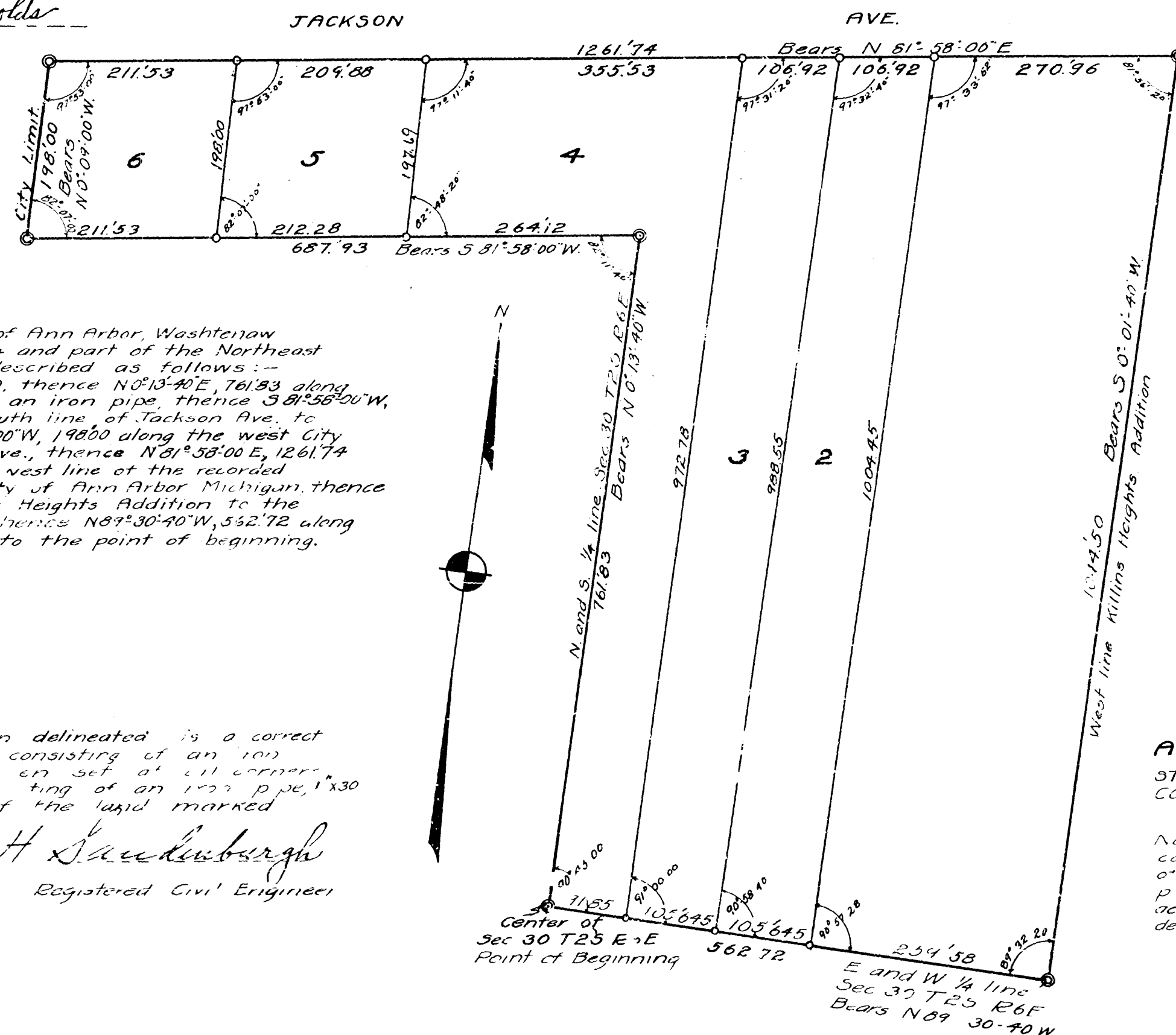
*Isaac S. Reynolds*  
Clerk.

SCALE 1"=120'  
0 120 240

### CERTIFICATE OF APPROVAL BY THE BOARD OF COUNTY AUDITORS.

Approved by the board of County Auditors  
of Washtenaw County, Michigan, this \_\_\_\_\_ day  
of \_\_\_\_\_ 1920

*J. L. Hume*  
Chairman  
*Al. ...*



### DESCRIPTION

The land included in this plat in the City of Ann Arbor, Washtenaw County, Michigan, is a part of the Northwest 1/4 and part of the Northeast 1/4 of Section 30 T25 R6E, bounded and described as follows:— Beginning at the center of said Sec. 30, thence N0°13'40"E, 761.83 along the north and south 1/4 line of Sec. 30 to an iron pipe, thence S81°58'00"W, 687.93 along a line parallel to the south line of Jackson Ave. to the west city limit line, thence N0°09'00"W, 198.00 along the west city limit line to the south line of Jackson Ave., thence N81°58'00"E, 1261.74 along the south line of Jackson Ave. to the west line of the recorded plat of Killins Heights Addition to the City of Ann Arbor Michigan, thence S0°01'40"W, 1044.50 along the west line of Killins Heights Addition to the east and west 1/4 line of said Sec. 30, thence N89°30'40"W, 532.72 along the east and west 1/4 line of said Sec. 30 to the point of beginning.

### SURVEYOR'S CERTIFICATE.

I hereby certify that the plat heron delineated is a correct one and that permanent monument consisting of an iron pipe 1"x30 with brass and copper caps is set at all corners of the plat marked "hu - 0", and consisting of an iron pipe 1"x30 at all angles in the boundaries of the land marked thus 0

*Geo. H. Saeckleburgh*  
Registered Civil Engineer

### CERTIFICATE OF RECORD

REGISTER OF DEEDS OFFICE  
WASHTENAW COUNTY SS  
Received for record the \_\_\_\_\_ day of \_\_\_\_\_ 1921 and  
recorded in Liber \_\_\_\_\_ of Plats on page \_\_\_\_\_  
Register of Deeds

### CERTIFICATE OF STATE APPROVAL

This Assessors Plat No 4 of the City of Ann Arbor has  
been examined and approved the \_\_\_\_\_ day of \_\_\_\_\_ 1921  
Deputy Auditor General

### DEDICATION

Know ALL MEN BY THESE PRESENTS, That I, Herbert W. Crippen, Assessor of the City of Ann Arbor, Washtenaw County, State of Michigan, by virtue of authority vested by Act 31 of Public Acts of 1839, as amended having been duly authorized by the City Council have caused the land described in the annexed plat to be surveyed, laid out and platted, to be known as Assessors Plat No. 4, City of Ann Arbor, Washtenaw County, Michigan.

Witness my hand and seal this \_\_\_\_\_ day of \_\_\_\_\_ 1920.  
*Herbert W. Crippen*  
Assessor of the City of Ann Arbor.

### ACKNOWLEDGEMENT

STATE OF MICHIGAN  
COUNTY OF WASHTENAW  
On this \_\_\_\_\_ day of \_\_\_\_\_ AD 1920 before me a Notary Public in and for said City personally came the above named Herbert W. Crippen Assessor of the City of Ann Arbor known to me to be the person who executed the above dedication and acknowledged the same to be his free act and deed as such Assessor.  
*Frank B. DeLaur*  
Notary Public  
My commission expires Dec 2, 1923.

### CERTIFICATE OF MUNICIPAL APPROVAL

BY THE BOARD OF PUBLIC WORKS OF THE CITY OF ANN ARBOR MICHIGAN  
This plat was examined and approved at a regular meeting of the Board of Public Works of the City of Ann Arbor on the \_\_\_\_\_ day of \_\_\_\_\_ 1920.

*Isaac S. Reynolds*  
Clerk

REGISTER OF DEEDS, ss.  
Washtenaw County }  
RECEIVED for Record on \_\_\_\_\_ day of \_\_\_\_\_ A D 1921  
at \_\_\_\_\_ o'clock \_\_\_\_\_ M. and recorded  
in Lib. \_\_\_\_\_ of Plats on Page \_\_\_\_\_  
*R. H. ...*  
Register of Deeds

1 of 1  
ASSESSOR'S PLAT NO. 4  
JAN 19 1921