

**"ASSESSOR'S PLAT NO. 17"**  
 REPLAT OF A PART OF BLOCK FOUR AND ALL OF BLOCK FIVE OF ASSESSORS  
 PLAT NO. 2 IN THE CITY OF ANN ARBOR AS THE SAME APPEARS IN  
 LIBER 2 OF PLATS ON PAGE 31 IN THE OFFICE OF REGISTER OF DEEDS  
**WASHTENAW CO., MICHIGAN.**  
 SCALE 1 IN. = 60 FT.

*June 1-1931*  
*Geo L. Hume*

**SURVEYOR'S CERTIFICATE**

I hereby certify that the plat hereon delineated is a correct one and that permanent metal monuments of not less than one inch in diameter and fifteen inches in length set in a concrete base at least four inches in diameter and forty-eight inches in depth have been placed at the points marked thus:  $\odot$  as there on shown at all angles in the boundaries of the land platted, at all the intersections of streets, intersections of alleys or of streets and alleys and at the intersections of streets and alleys with the boundaries of the plat as shown on said plat

*George H. Sandenburgh*  
 Registered Civil Engineer.

**CERTIFICATE OF MUNICIPAL APPROVAL**

This plat was approved by the Common Council of the City of Ann Arbor, Washtenaw County, Michigan at a meeting held May 4 1931

*Sup. City*  
 Clerk

This plat was approved by the Board of Public Works of the City of Ann Arbor, Washtenaw County, Michigan at a meeting held April 21 1931

*Sup. City*  
 Clerk

*June 3-1931*  
*Geo L. Hume*

**CERTIFICATE OF APPROVAL BY BOARD OF COUNTY AUDITORS**

Approved by the Board of County Auditors of Washtenaw County, Michigan this 5 day of May 1931

*Chairman*  
*Chairman*  
*Chairman*

*June 1-1931*  
*Geo L. Hume*

**DEDICATION**

KNOW ALL MEN BY THESE PRESENTS: That I Herbert W. Crippen, Assessor of the City of Ann Arbor, Washtenaw County, Michigan by virtue of authority in me vested by Section 51, Act 172, of 1929, having been duly authorized by the Common Council of the City of Ann Arbor, Washtenaw County, Michigan have caused the land described in the annexed plat to be surveyed, laid and platted to be known as "Assessor's Plat No. 17, Replat of a Part of Block Four and all of Block Five of Assessors Plat No. 2" in the City of Ann Arbor, Washtenaw County, Michigan as the same appears in Liber 2 of Plats on Page 31 in the Office of Register of Deeds, T.2.S., R.6.E., Washtenaw County, Michigan and that the streets and alleys as shown on said plat are hereby dedicated to the use of the public.

*Herbert W. Crippen*  
 Assessor of the City of Ann Arbor,  
 Washtenaw County, Michigan.

Witnesses  
*David R. Scovill*  
*Geo L. Hume*

**ACKNOWLEDGEMENT**

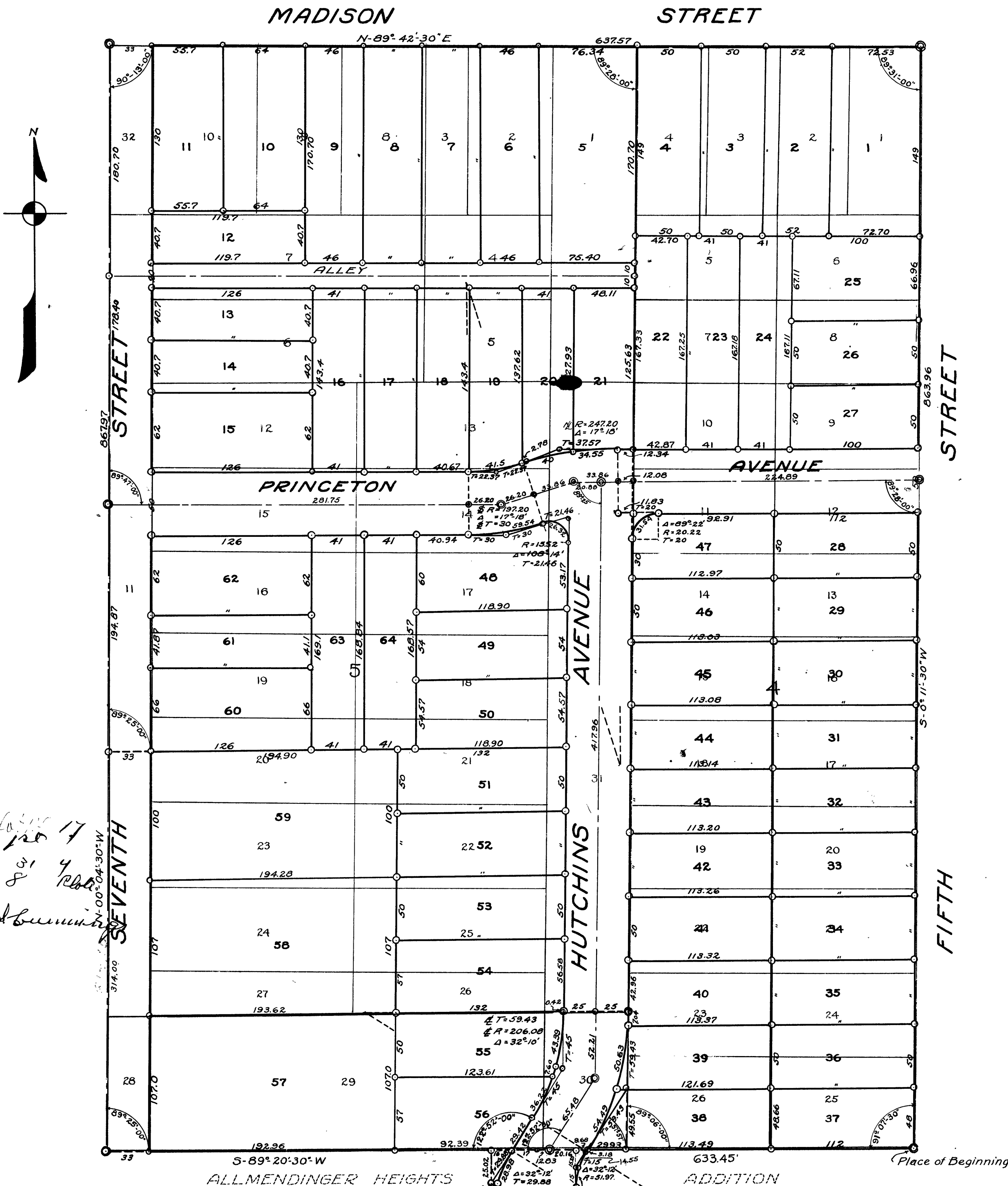
STATE OF MICHIGAN }  
 COUNTY OF WASHTENAW }  
 On this 5th day of May AD 1931, before me a Notary Public, *John M. Cunningham* in and for said County, personally came the above named Herbert W. Crippen, Assessor of the City of Ann Arbor, Washtenaw County, Michigan known to me to be the person who executed the above dedication and acknowledged the same to be his free act and deed as such Assessor.

*Ernest M. Wraister*  
 Notary Public in and for Washtenaw Co., Michigan.

My Commission Expires 5-1-32

**DESCRIPTION**

Commencing at the Quarter Corner between Sections 29 and 32, T.2.S., R.6.E. Washtenaw County, Michigan thence Westerly along the North line of Section 32, 1523.49 ft. to Place of Beginning, thence S-89°20'30"W 633.45 ft. along said Section Line and North Line of Allmendinger Heights Addition, to the  $\odot$  of Seventh Street, thence N-0°04'30"W along the  $\odot$  of Seventh Street 867.97 ft. to the South Line of Madison Street, thence N-89°42'30"E, 637.57 ft. to the West Line of Fifth Street, thence S-0°11'30"W along the West Line of Fifth Street 863.96 ft. to the Place of Beginning



1 OF 1  
 06/01/1931  
 PLAT NO. 17  
 PAGE 56

*Check 12/1/31*  
*Placed 12/1/31*