

ADDENDUM No. 1

RFP No. 22-21

2022 Sidewalk Gap Elimination Project

Due: April 1, 2022 by 2:00 p.m. (local time)

The information contained herein shall take precedence over the original documents and all previous addenda (if any), and is appended thereto. **This Addendum includes 12 attached pages and plan sheets as noted below.**

The Proposer is to acknowledge receipt of this Addendum No. 1, including all attachments in its Proposal by so indicating in the proposal that the addendum has been received. Proposals submitted without acknowledgement of receipt of this addendum may be considered non-conforming.

The following forms provided within the RFP Document should be included in submitted proposal:

- Attachment D - Prevailing Wage Declaration of Compliance
- Attachment E - Living Wage Declaration of Compliance
- Attachment G - Vendor Conflict of Interest Disclosure Form
- Attachment H - Non-Discrimination Declaration of Compliance

Proposals that fail to provide these completed forms listed above upon proposal opening may be rejected as non-responsive and may not be considered for award.

I. CORRECTIONS/ADDITIONS/DELETIONS

Changes to the RFP documents which are outlined below are referenced to a page or Section in which they appear conspicuously. Offerors are to take note in its review of the documents and include these changes as they may affect work or details in other areas not specifically referenced here.

Section/Page(s)	Change
Section III.C.4 / Page 12	Remove the following as provided in RFP No. 22-21 Document: Documentation of how the bidder assesses the skills and qualifications of any employees who do not have master or journeyman certification or status, or are not participants in a Registered Apprenticeship Program.
<i>Comment: The intent with this change is to simply remove the 4th criteria for Section III.C – Workforce Development that was erroneously included in the originally published RFP Document.</i>	
Section III.E. Schedule of Pricing / Pages 13-15	Revised quantities for Items 130, 141, 540

Section/Page(s)	Change
Detailed Specification / Page DS-36	Additional information added to Measurement and Payment.
Drawing Plan / 6 of 24	Revised alignment of sidewalk.
Drawing Plan / 16 of 24	Revised callout on mailbox at Sta. 5+82 (2725 Nixon)
Drawing Plans / 15, 16, 18, 19, 22, 24 of 24	Added Stationing for clarity of plans.

II. ADDITIONAL INFORMATION

Trees removals 6-inch and larger identified as “for information only ... [and] not as a part of this project” at the Traver and Nixon location have been removed as of the issuance of this addendum.

Offerors are responsible for any conclusions that they may draw from the information contained in the Addendum.

E. Schedule of Pricing/Cost - 20 Points

Company _____

Unit Price Bid

<u>Pay Item Code</u>	<u>Pay Item Description</u>	<u>Units</u>	<u>Estimated Quantity</u>	<u>Unit Price</u>	<u>Total Price</u>
101	General Conditions, Max \$50,000	LS	1	\$	\$
102	Digital Audio Visual Coverage	LS	1	\$	\$
103	Project Supervision, Max. \$15,000	LS	1	\$	\$
104	Certified Payroll	LS	1	\$	\$
105	Minor Traffic Devices, Max \$25,000	LS	1	\$	\$
110	No Parking Signs	Ea	10	\$	\$
111	Pedestrian Type II Barricade, Temp.	Ea	2	\$	\$
112	Conc Barrier, Temp, Furnish and Operate	Ft	200	\$	\$
113	Lighted Arrow Board, Furnish and Operate	Each	1	\$	\$
114	Plastic Drum - Lighted, Furnish and Operate	Each	60	\$	\$
115	Temporary Sign, Type B, Furnish and Operate	Sft	71	\$	\$
120	Protect Corners	Ea	9	\$	\$
130	Tree Protection Fence	Ft	390	\$	\$
135	Stump, Rem, 6 to 12 inch	Ea	42	\$	\$
136	Stump, Rem, 13 to 20 inch	Ea	5	\$	\$
137	Stump, Rem, 21 to 26 inch	Ea	5	\$	\$
138	Stump, Rem, 27 inch and greater	Ea	2	\$	\$
140	Tree, Rem, 6 inch to 12 inch	Ea	2	\$	\$
141	Tree, Rem, 13 to 20 inch	Ea	2	\$	\$
142	Tree, Rem, 21 to 26 inch	Ea	1	\$	\$
143	Tree, Rem, 27 inch and greater	Ea	1	\$	\$
150	Fence, Rem	Ft	65	\$	\$
300	Culv, Less than 24-Inch, Rem	Ea	2	\$	\$
301	Culv, 24 inch to 48 inch, Rem	Ea	1	\$	\$
302	Dr Structure, Any Size or Depth, Rem	Ea	1	\$	\$
303	Sewer, Any Size or Depth, Rem	Ft	35	\$	\$
310	Culv End Sect, 12 inch	Ea	4	\$	\$
311	Culv End Sect, 18 inch	Ea	1	\$	\$

TOTAL THIS PAGE (Page 13)

\$ _____

(Also must be entered on Page 15)

<u>Pay Item Code</u>	<u>Pay Item Description</u>	<u>Units</u>	<u>Estimated Quantity</u>	<u>Unit Price</u>	<u>Total Price</u>
312	Culv, CI F, 12 inch	Ft	80	\$	\$
320	Sewer, CI IV, C-76, 12 inch, Tr Det I, Modified	Ft	57	\$	\$
321	Sewer, CI IV, C-76, 18 inch, Tr Det I, Modified	Ft	43	\$	\$
322	Sewer, CI IV, C-76, 18 inch, Tr Det V, Modified	Ft	34	\$	\$
323	Sewer Tap, 12 inch	Ea	1	\$	\$
330	Dr Structure, Manhole, Type 1, 48 inch dia	Ea	3	\$	\$
331	Dr Structure, Single Inlet, 24 inch dia	Ea	1	\$	\$
332	Dr Structure, Tap, 12 inch	Ea	1	\$	\$
333	Dr Structure, Tap, 4 inch	Ea	1	\$	\$
340	Structure Cover, Special	Lb	1500	\$	\$
500	Remove HMA Pavement	Sft	3000	\$	\$
501	Remove Concrete Curb and Gutter - Any Type	Ft	80	\$	\$
502	Remove Concrete Sidewalk or Drive - Any Thickness	Sft	600	\$	\$
510	Sidewalk Grading - Nixon and Traver	Sta	9.5	\$	\$
511	Sidewalk Grading - Hutchins/Prescott, Saunders, Platt	Sta	0.35	\$	\$
512	Sidewalk Grading - S. Main	Sta	0.15	\$	\$
515	Sidewalk Ramp Grading	Ea	5	\$	\$
518	Subgrade Undercutting, Type II	Sft	510	\$	\$
520	Sand Subbase Course, Class II - CIP	Cyd	55	\$	\$
521	21AA Limestone - CIP	Cyd	43	\$	\$
522	Flowable Fill (backfill)	Cyd	9	\$	\$
523	Maintenance Gravel	Ton	5	\$	\$
525	Underdrain, Subbase, 6 inch	Ft	160	\$	\$
526	Underdrain, bank, 4-inch, Special	Ft	165	\$	\$
527	Underdrain, outlet, 4-inch	Ft	35	\$	\$
529	Underdrain, outlet ending, 4-inch	Ea	2	\$	\$
530	Handpatching	Ton	11	\$	\$
531	HMA Approach	Ton	45	\$	\$
540	4 inch Sidewalk or Ramp	Sft	4500	\$	\$
541	6 inch Drive Approach, Ramp, or Sidewalk	Sft	240	\$	\$
542	6 inch Drive Approach, Ramp, or Sidewalk - High Early	Sft	470	\$	\$

TOTAL THIS PAGE (Page 14)

\$

(Also must be entered on Page 15)

<u>Pay Item Code</u>	<u>Pay Item Description</u>	<u>Units</u>	<u>Estimated Quantity</u>	<u>Unit Price</u>	<u>Total Price</u>
543	8 inch Drive Approach, Ramp, or Sidewalk	Sft	142	\$	\$
550	Sidewalk Retaining Wall, 6 inch to 48 inch	Sft	650	\$	\$
551	Sidewalk Curb, 4 inch	Ft	79	\$	\$
560	Curb and Gutter, Conc, AA Det SD-R-1, Modified	Ft	160	\$	\$
561	Driveway Opening, Conc, Detail M, P-NC	Ft	25	\$	\$
570	Detectable Warning, Cast In Place	Sft	50	\$	\$
580	Adjust Structure	Ea	1	\$	\$
581	Adjust Box	Ea	1	\$	\$
590	Pavt Mrkg, Thermopl, 12 inch, White	Ft	84	\$	\$
591	Pavt Mrkg, Thermopl, 24 inch, Stop Bar	Ft	62	\$	\$
701	Erosion Control, Silt Fence	Ft	850	\$	\$
702	Erosion Control, Inlet Protection	Ea	4	\$	\$
703	Riprap, Plain	Syd	6	\$	\$
800	Restoration	Syd	2000	\$	\$
805	Irrigation System, Protect and Maintain	LS	1	\$	\$
810	Ilex x Meserveae Mesog, 3 gal cont	Ea	6	\$	\$
811	Ilex x Meserveae Mesdob, 3 gal cont	Ea	2	\$	\$
812	Amelanchier X Grandiflora, 6 foot	Ea	4	\$	\$
813	Cornus Alternifolia, 6 foot	Ea	1	\$	\$
814	Fothergilla Gardenii, 3 gal cont	Ea	19	\$	\$
815	Viburnum P. Tomentosum, 5 gal cont	Ea	11	\$	\$
816	Juniperus Chinensis, 6 foot	Ea	9	\$	\$
817	Juniperus Virginiana, 6 foot	Ea	9	\$	\$
825	Fence, Chain Link, 48 inch, Vinyl-Coated	Ft	12	\$	\$
826	Fence, Chain Link, 48 inch, Vinyl-Coated, Wall Mounted	Ft	16	\$	\$
850	Clean-Up & Restoration, Special, Max \$8,500	LS	1	\$	\$

TOTAL THIS PAGE (Page 15)

\$

TOTAL FROM PAGE 13

\$

TOTAL FROM PAGE 14

\$

TOTAL BID

\$

**DETAILED SPECIFICATION
FOR
ITEM #135-138 - STUMP, REMOVE, __ INCH
ITEM #140-143 - TREE, REMOVE, __ INCH**

DESCRIPTION

This work shall consist of the removal of trees and stumps where indicated on the Plans, and as directed by the Engineer. This work shall include removing remaining stumps and roots from the ground where trees have previously been removed; and cutting and removing trees, their stumps, and roots from the ground. All removed materials shall be disposed of. Complete this work according to the MDOT 2012 Standard Specifications for Construction Section 202 and this detailed specification.

MEASUREMENT AND PAYMENT

The completed work, as described, will be measured and paid for at the contract unit price using the following pay item:

Pay Item	Pay Unit
Stump, Rem, __ Inch	Each
Tree, Rem, __ Inch.....	Each

Pay Items include all labor, equipment and materials necessary to complete the work as described.

The tree size shall be determined by the average diameter of the tree trunk, measured to the nearest full inch, at a point 4-1/2 feet above the base of the tree at the ground line. Trees having major limbs lower than 4-1/2 feet above the ground shall be measured at the smallest diameter below such limbs. Where more than one tree has grown from a common stump, each tree shall be measured as a separate tree.

The stump size shall be the diameter measured to the nearest full inch at the top of the stump.

Tree removal pay items include respective stump removal.

The cost of removing trees or stumps with a diameter less than 6 inches is included in other pay items.



CITY OF ANN ARBOR ENGINEERING

SIDEWALK GAP ELIMINATION - 2022

RFP 22-21 FILE No. 2022007

NOTES:

FOR PROTECTION OF UNDERGROUND UTILITIES AND IN CONFORMANCE WITH PUBLIC ACT 174 OF 2013, THE CONTRACTOR SHALL CALL 811 OR 1-800-482-7171 A MINIMUM OF THREE FULL WORKING DAYS, EXCLUDING SATURDAYS, SUNDAYS, AND HOLIDAYS, PRIOR TO BEGINNING EACH EXCAVATION IN AREAS WHERE PUBLIC UTILITIES HAVE NOT BEEN PREVIOUSLY LOCATED. MEMBERS WILL THUS BE ROUTINELY NOTIFIED. THIS DOES NOT RELIEVE THE CONTRACTOR OF THE RESPONSIBILITY OF NOTIFYING UTILITY OWNERS WHO MAY NOT BE A PART OF THE "MISS DIG" ALERT SYSTEM.

THE UNDERGROUND LOCATIONS SHOWN FOR NATURAL GAS, TELEPHONE, ELECTRICAL POWER, CABLE TV AND FIBER OPTIC LINES ARE APPROXIMATE. THE CITY OF ANN ARBOR ASSUMES NO RESPONSIBILITY FOR THEIR ACCURATE REPRESENTATION IN THIS DRAWING. MISS DIG MUST BE CONTACTED PRIOR TO CONSTRUCTION TO LOCATE THESE UTILITIES.

THE CONSTRUCTION COVERED BY THESE PLANS SHALL CONFORM TO THE 1994 EDITION OF THE CITY OF ANN ARBOR PUBLIC SERVICES DEPARTMENT STANDARD SPECIFICATIONS, ITS DETAILS, WHICH ARE INCLUDED BY REFERENCE, AND THIS PROJECT'S CONTRACT DOCUMENTS. THE OMISSION OF ANY CURRENT STANDARD DETAIL DOES NOT RELIEVE THE CONTRACTOR FROM THIS REQUIREMENT.



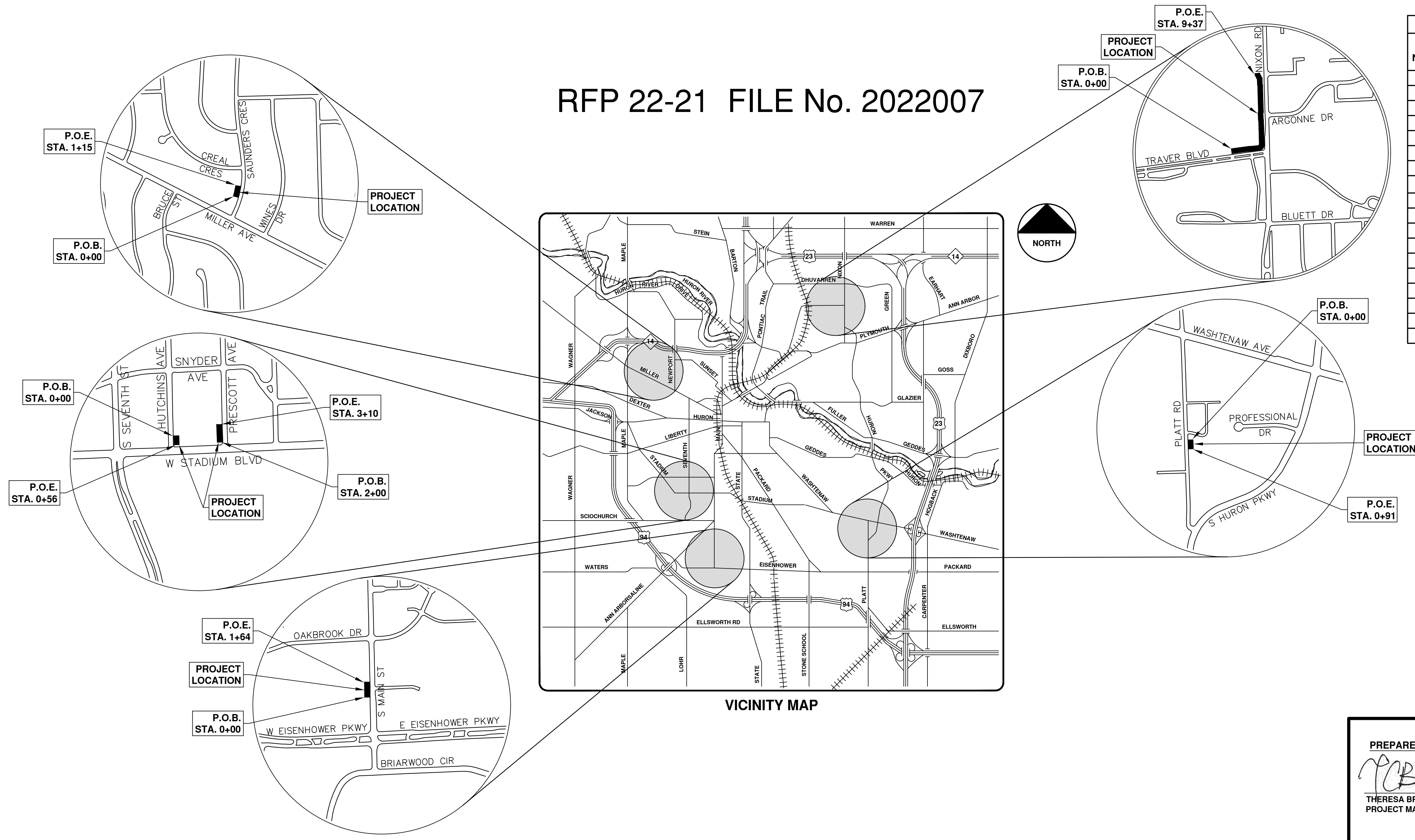
REV.	DATE	DESCRIPTION
01	3-25-22	ADDENDUM #1
00	3-4-22	OUT TO BID

CITY OF ANN ARBOR
PUBLIC SERVICES
301 EAST HURON STREET
ANN ARBOR, MI 48106-8647
www.a2gov.org



CITY OF ANN ARBOR - PUBLIC SERVICES - ENGINEERING
SCALE
DRAWING No. 2022007-1
SHEET No. 1 OF 24

SHEET LIST TABLE	
SHEET NUMBER	SHEET TITLE
1	COVER SHEET
2	STANDARD NOTES
3	LEGEND AND DETAILS
4	HUTCHINS AVE AND PRESCOTT AVE SIDEWALK
5	SAUNDERS CRESCENT SIDEWALK
6	S MAIN ST SIDEWALK
7	PLATT ROAD SIDEWALK
TRAVER BLVD - NIXON RD	
8	STANDARD NOTES
9 - 11	DETAILS
12	TYPICAL SECTIONS
13 - 14	REMOVALS
15 - 16	PROPOSED SIDEWALK
17	DETAILED GRADES - TRAVER BLVD
18 - 19	DETAILED GRADES - NIXON RD
20	ADA RAMPS
21 - 22	SIGNAGE AND PAVEMENT MARKINGS - TRAVER BLVD
23 - 24	MAINTENANCE OF TRAFFIC - SB NIXON

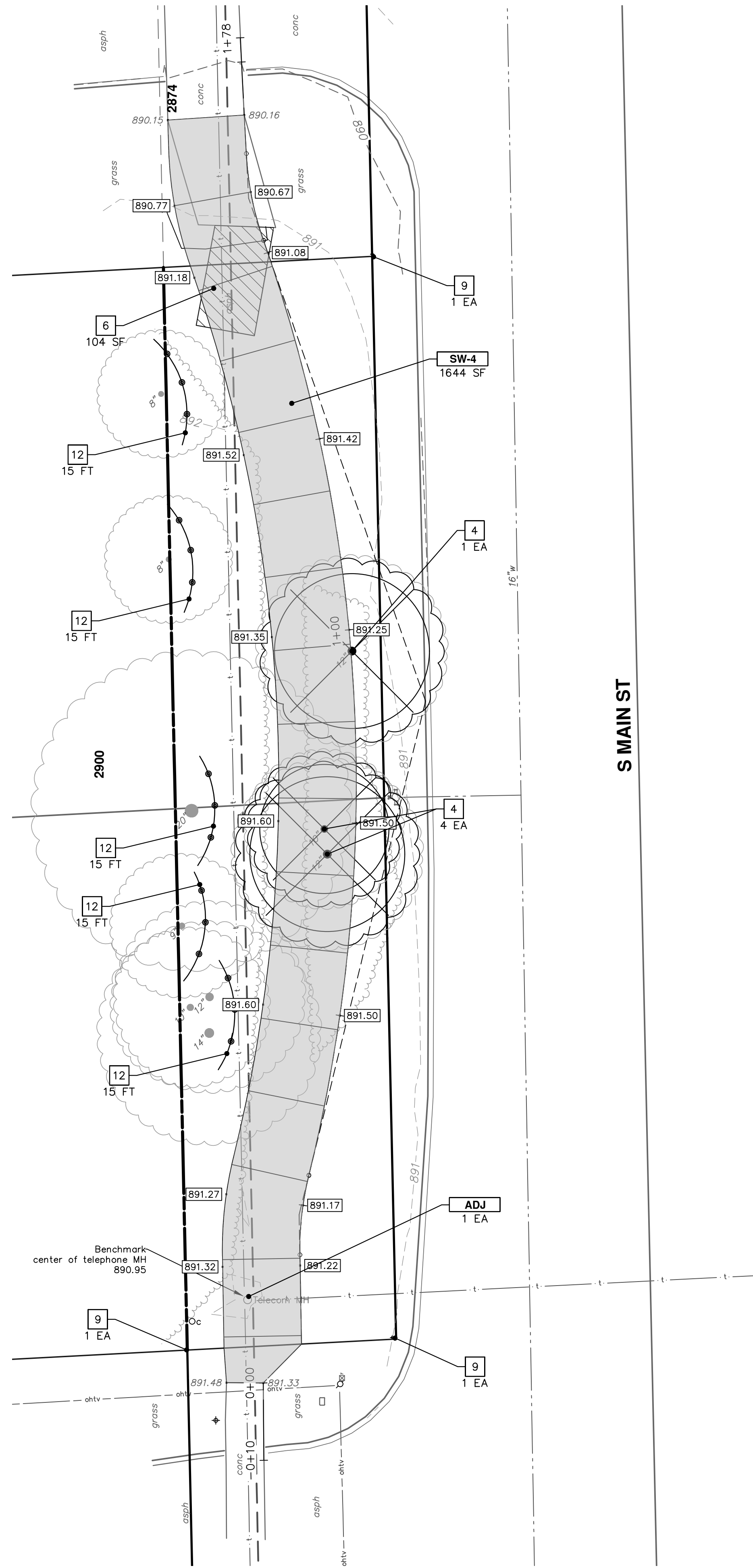


R:\2022007_2022+ SW Gap Projects\Plan Production\2022007Cov.dwg - _a2_standard bw.stb - Plot Date: 3/25/2022 5:25:22 PM

PREPARED UNDER THE SUPERVISION OF

 THERESA BRIDGES, P.E. - MI LICENSE No. 6201052180
 PROJECT MANAGER
 DATE 3 / 4 / 2022

© SIDEWALK GAP ELIMINATION - 2022; RFP 22-21; 2022007



REMOVAL KEY	
KEY	DESCRIPTION
1	REMOVE CONCRETE CURB AND GUTTER - ANY THICKNESS*
2	EROSION CONTROL, INLET PROTECTION
3	EROSION CONTROL, SILT FENCE
4	TREE, REM, 6 INCH TO 18 INCH** TREE, REM, 19 INCH TO 36 INCH**
5	DR STRUCTURE, ANY SIZE OR DEPTH, REM
6	REMOVE HMA PAVEMENT
7	CULV, REM, LESS THAN 24-INCH CULV, REM, 24-INCH TO 48-INCH
8	FENCE, REM
9	PROTECT CORNERS
10	REMOVE CONCRETE SIDEWALK OR DRIVE - ANY THICKNESS
11	SEWER, ANY SIZE OR DEPTH, REM
12	PROTECTIVE FENCING

* SAWCUT FULL DEPTH AT REMOVAL LIMITS

CONSTRUCTION KEY	
KEY	DESCRIPTION
RET	SIDEWALK RETAINING WALL, 6 TO 48 INCH
ISW-CB	INTEGRAL SIDEWALK CURB, 6 INCH
SW-4	4 INCH SIDEWALK OR RAMP
SW-6	6 INCH DRIVE APPROACH, RAMP, OR SIDEWALK
SW-8	8 INCH DRIVE APPROACH, OR SIDEWALK
CG	CURB AND GUTTER, CONC, AA DET SD-R-1, MODIFIED
DWS	DETECTABLE WARNING, CAST IN PLACE
DW-M	DRIVEWAY OPENING, CONC, DETAIL M, P-NC
HMA	HMA APPROACH
DW-C	6 INCH DRIVE APPROACH, RAMP, OR SIDEWALK - HIGH EARLY
HP	HAND PATCHING
CUL12	CULV, CL F, 12 INCH
MH-K	DR STRUCTURE, MANHOLE, TYPE 1, 48 INCH DIA DR STRUCTURE COVER, TYPE K, SPECIAL
IN-G	DR STRUCTURE, SINGLE INLET DR STRUCTURE COVER, TYPE G, SPECIAL
MH-G	DR STRUCTURE, MANHOLE, TYPE 1, 48 INCH DIA DR STRUCTURE COVER, TYPE G, SPECIAL
MH-B	DR STRUCTURE, MANHOLE, TYPE 1, 48 INCH DIA DR STRUCTURE COVER, TYPE B, SPECIAL
ST-12	SEWER, CL IV, C-76, 12 INCH, TR DET I, MODIFIED
ST-18	SEWER, CL IV, C-76, 18 INCH, TR DET I, MODIFIED
TAP	DR STRUCTURE, TAP, 12 INCH
ES	CULV END SECT, 12 INCH CULV END SECT, 18 INCH
S-TAP	SEWER TAP, 12-INCH
TREE-4	AMELANCHIER X GRANDIFLORA 'AUTUMN BRILLIANCE', 6 FOOT
TREE-5	CORNUS ALTERNIFOLIA, 6 FOOT
SHRUB-6	FOTHERGILLA GARDENII, 3 GAL CONT
SHRUB-7	VIBURNUM P. TOMENTOSUM, 5 GAL CONT
FNC	FENCE, CHAIN LINK, 48-INCH, VINYL-COATED
FNC-WM	FENCE, CHAIN LINK, 48-INCH, WALL MOUNTED
REST	RESTORATION
RIP	"RIPRAP, HEAVY, MODIFIED"
ADJ	ADJUST STRUCTURE COVER



REV	DATE	DESCRIPTION
01	3-25-22	KB/DF
00	3-4-22	KB/DF/CC

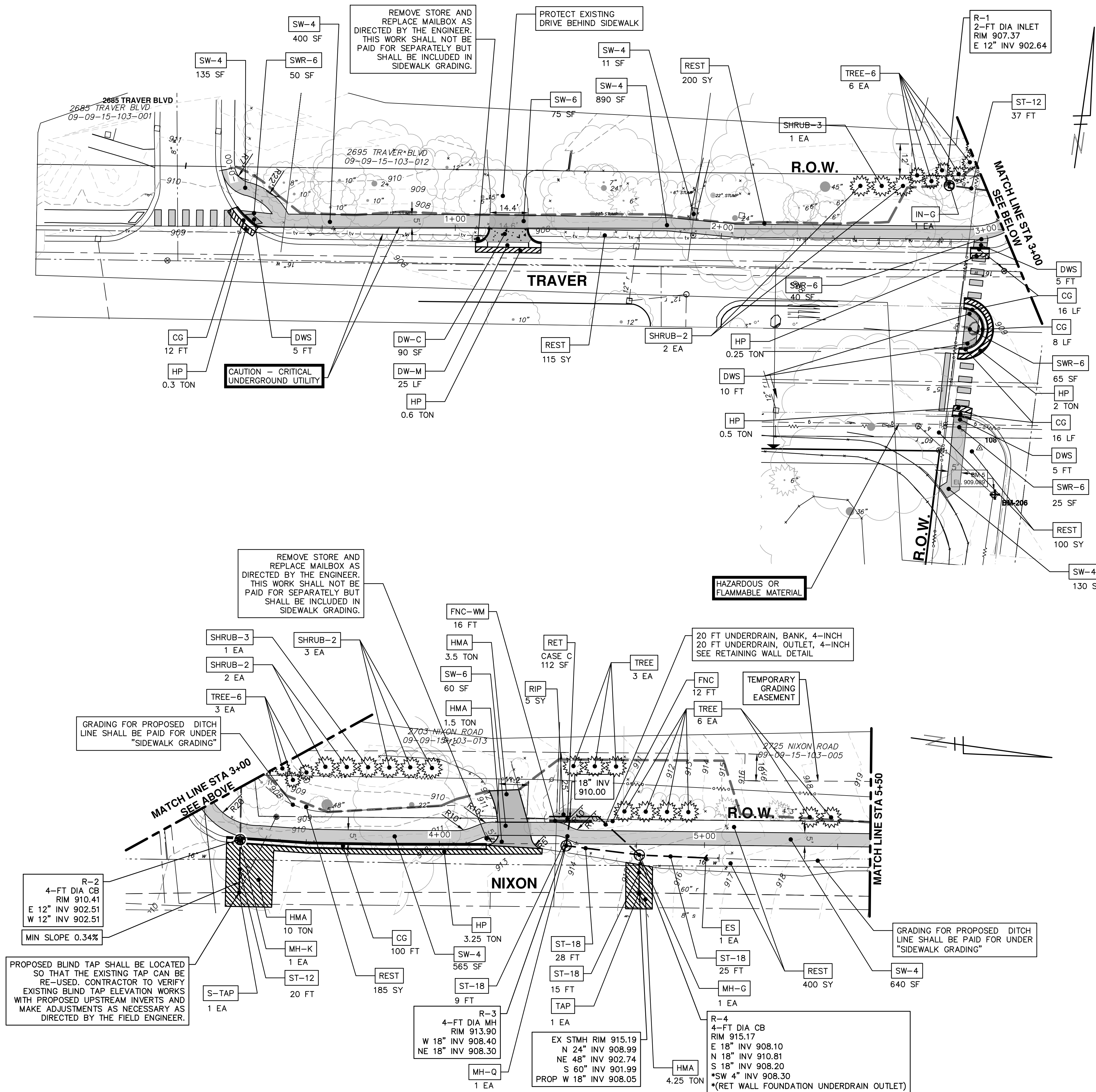
CITY OF ANN ARBOR
PUBLIC SERVICES
301 EAST HURON STREET
P.O. BOX 8647
ANN ARBOR MI 48107-8647
www.a3gov.org



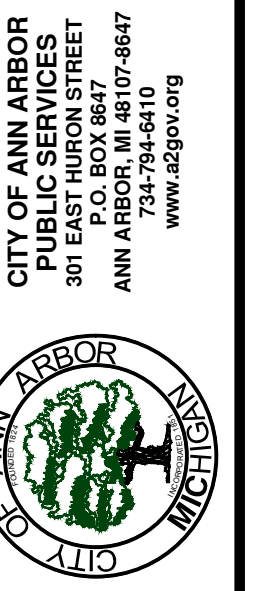
CITY OF ANN ARBOR - PUBLIC SERVICES - ENGINEERING
SIDEWALK GAP ELIMINATION - 2022

SCALE PLAN: 1" = 10'
DRAWING No. 2022007-6

R:\2022007_2022+ SW Gap Projects\20 Traver Blvd & Nixon Road Sidewalk.dwg Dwg Created: 24-Mar-22 - _a2 standard bw.stb - Plot Date: 25-Mar-22

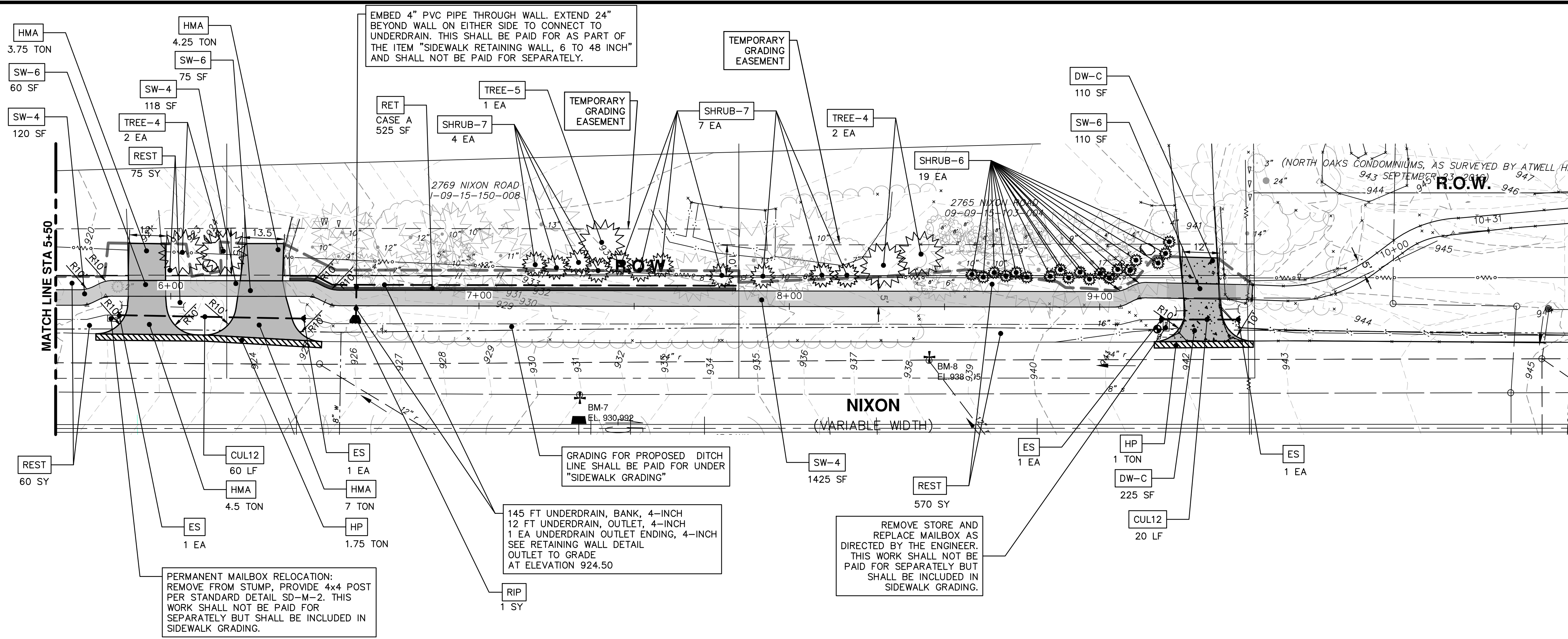


CONSTRUCTION KEY	
KEY	DESCRIPTION
RET	SIDEWALK RETAINING WALL, 6 INCH TO 48 INCH
SW-4	4 INCH SIDEWALK OR RAMP
SW-6	6 INCH DRIVE APPROACH, RAMP, OR SIDEWALK - HIGH EARLY
SWR-6	6 INCH DRIVE APPROACH, RAMP, OR SIDEWALK
CG	CURB AND GUTTER, CONC, AA DET SD-R-1, MODIFIED
DWS	DETECTABLE WARNING, CAST IN PLACE
DW-M	DRIVEWAY OPENING, CONC, DETAIL M, P-NC
HMA	HMA APPROACH
DW-C	6 INCH DRIVE APPROACH, RAMP, OR SIDEWALK - HIGH EARLY
HP	HAND PATCHING
CUL12	CULV, CL F, 12 INCH
MH-K	DR STRUCTURE, MANHOLE, TYPE 1, 48 INCH DIA STRUCTURE COVER TYPE K
IN-G	DR STRUCTURE, SINGLE INLET STRUCTURE COVER TYPE G
MH-G	DR STRUCTURE, MANHOLE, TYPE 1, 48 INCH DIA STRUCTURE COVER TYPE G
MH-Q	DR STRUCTURE, MANHOLE, TYPE 1, 48 INCH DIA DR STRUCTURE COVER TYPE Q
ST-12	SEWER, CL IV, C-76, 12 INCH, TR DET I, MODIFIED SEWER CL IV, C-76, 12 INCH, TR DET V, MODIFIED
ST-18	SEWER, CL IV, C-76, 18 INCH, TR DET I, MODIFIED SEWER CL IV, C-76, 18 INCH, TR DET V, MODIFIED
TAP	DR STRUCTURE, TAP, 12 INCH
ES	CULV END SECT, 12 INCH CULV END SECT, 18 INCH
S-TAP	SEWER TAP, 12-INCH
TREE	JUNIPERUS VIRGINIANA, 6 FOOT
SHURB-2	ILEX X MESERVEAE MESOG, 3 GAL CONT
SHURB-3	ILEX X MESERVEAE MESDOB, 3 GAL CONT
FNC	FENCE, CHAIN LINK, 48-INCH, VINYL-COATED
FNC-WM	FENCE, CHAIN LINK, 48-INCH, WALL MOUNTED
REST	RESTORATION
RIP	RIPRAP, PLAIN
TREE-6	JUNIPERUS CHINENSIS 'HETZ COLUMNAR' 6 FOOT



CITY OF ANN ARBOR - PUBLIC SERVICES - ENGINEERING
SIDEWALK GAP ELIMINATION - 2022
 TRAVER NIXON
 PROPOSED SIDEWALK STA. 0+00 - STA. 5+50
 SCALE PLAN: 1" = 20'
 DRAWING No. 2022007-15
 SHEET No. 15 OF 24

R:\2022007_2022+ SW Gap Projects\20 TRAVER BLVD & NIXON ROAD SIDEWALK.dwg Dwg Created: 24-Mar-22 - Plot Date: 25-Mar-22



CONSTRUCTION KEY	
KEY	DESCRIPTION
RET	SIDEWALK RETAINING WALL, 6 TO 48 INCH
SW-4	4 INCH SIDEWALK OR RAMP
SW-6	6 INCH DRIVE APPROACH, RAMP, OR SIDEWALK - HIGH EARLY
SWR-6	6 INCH DRIVE APPROACH, RAMP, OR SIDEWALK
CG	CURB AND GUTTER, CONC, AA DET SD-R-1, MODIFIED
DWS	DETECTABLE WARNING, CAST IN PLACE
DW-M	DRIVEWAY OPENING, CONC, DETAIL M, P-NC
HMA	HMA APPROACH
DW-C	6 INCH DRIVE APPROACH, RAMP, OR SIDEWALK - HIGH EARLY
HP	HAND PATCHING
CUL12	CULV, CL F, 12 INCH
MH-K	DR STRUCTURE, MANHOLE, TYPE 1, 48 INCH DIA STRUCTURE COVER TYPE K
IN-G	DR STRUCTURE, SINGLE INLET STRUCTURE COVER TYPE G
MH-G	DR STRUCTURE, MANHOLE, TYPE 1, 48 INCH DIA STRUCTURE COVER TYPE G
MH-Q	DR STRUCTURE, MANHOLE, TYPE 1, 48 INCH DIA STRUCTURE COVER TYPE Q
ST-12	SEWER, CL IV, C-76, 12 INCH, TR DET I, MODIFIED SEWER CL IV, C-76, 12 INCH, TR DET V, MODIFIED
ST-18	SEWER, CL IV, C-76, 18 INCH, TR DET I, MODIFIED SEWER CL IV, C-76, 18 INCH, TR DET V, MODIFIED
TAP	DR STRUCTURE, TAP, 12 INCH
ES	CULV END SECT, 12 INCH CULV END SECT, 18 INCH
S-TAP	SEWER TAP, 12-INCH
TREE-4	AMELANCHIER X GRANDIFLORA 'AUTUMN BRILLIANCE,' 6 FOOT
TREE-5	CORNUS ALTERNIFOLIA, 6 FOOT
SHURB-6	FOTHERGILLA GARDENII, 3 GAL CONT
SHURB-7	VIBURNUM P. TOMENTOSUM, 5 GAL CONT
FNC	FENCE, CHAIN LINK, 48-INCH, VINYL-COATED
FNC-WM	FENCE, CHAIN LINK, 48-INCH, WALL MOUNTED
REST	RESTORATION
RIP	"RIPRAP, HEAVY, MODIFIED"

811
Know what's below.
Call before you dig.

01 ADDENDUM #1
3-25-22
3-4-22

00 OUT TO BID
DATE

00 REV.

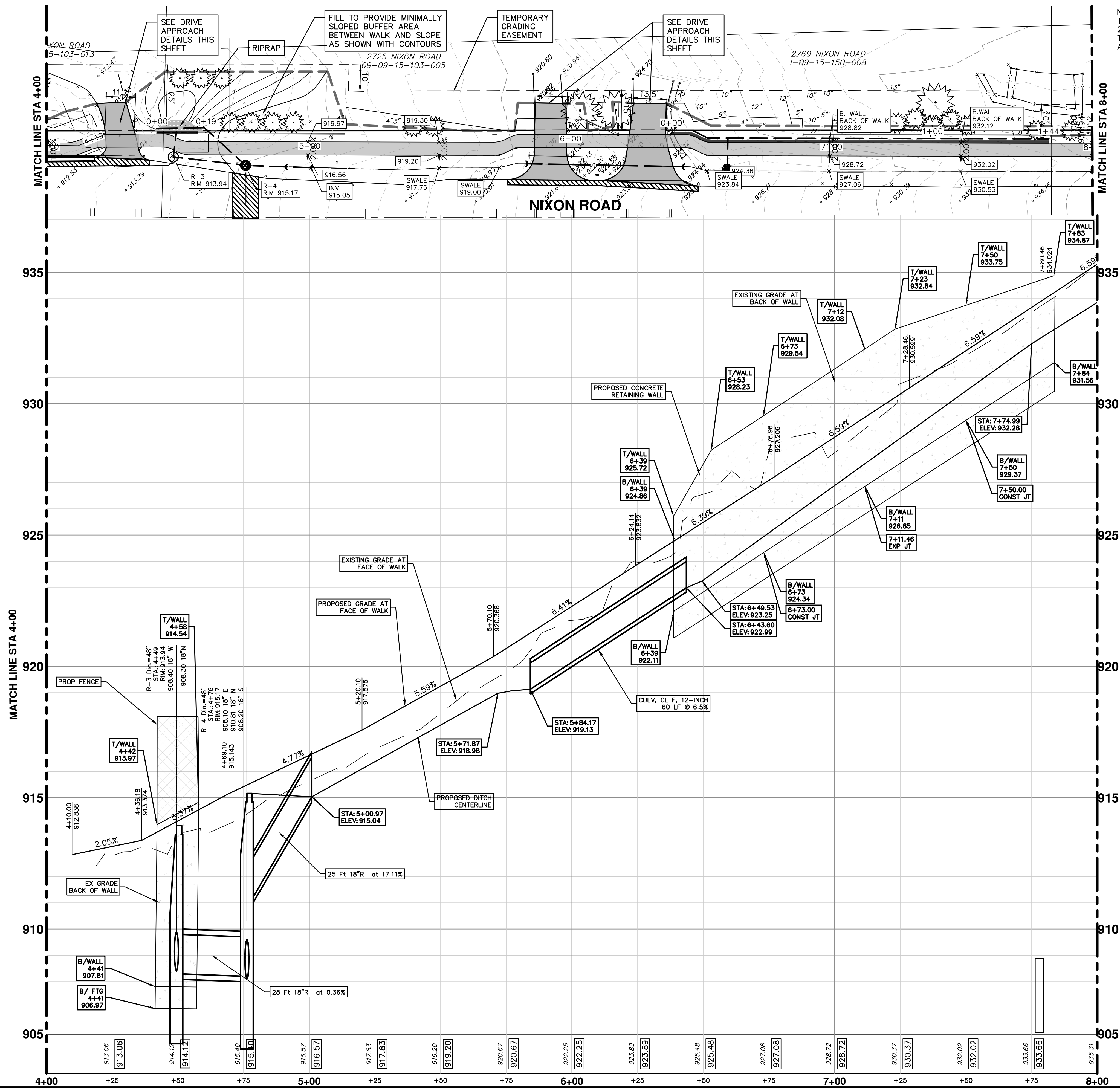
CITY OF ANN ARBOR
PUBLIC SERVICES
301 EAST HURON STREET
ANN ARBOR MI 48106-8647
www.a3gov.org

DESCRIPTION
DRAWN
CHECKED

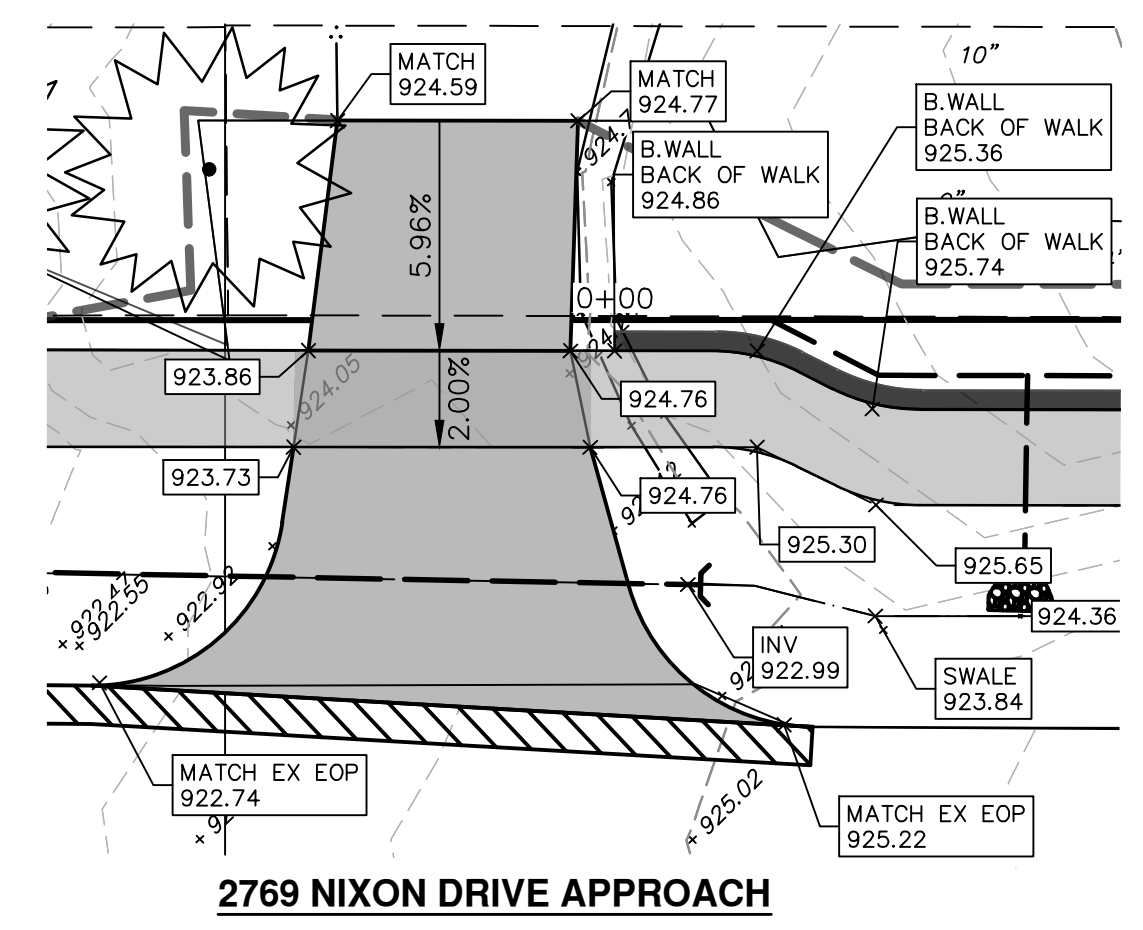
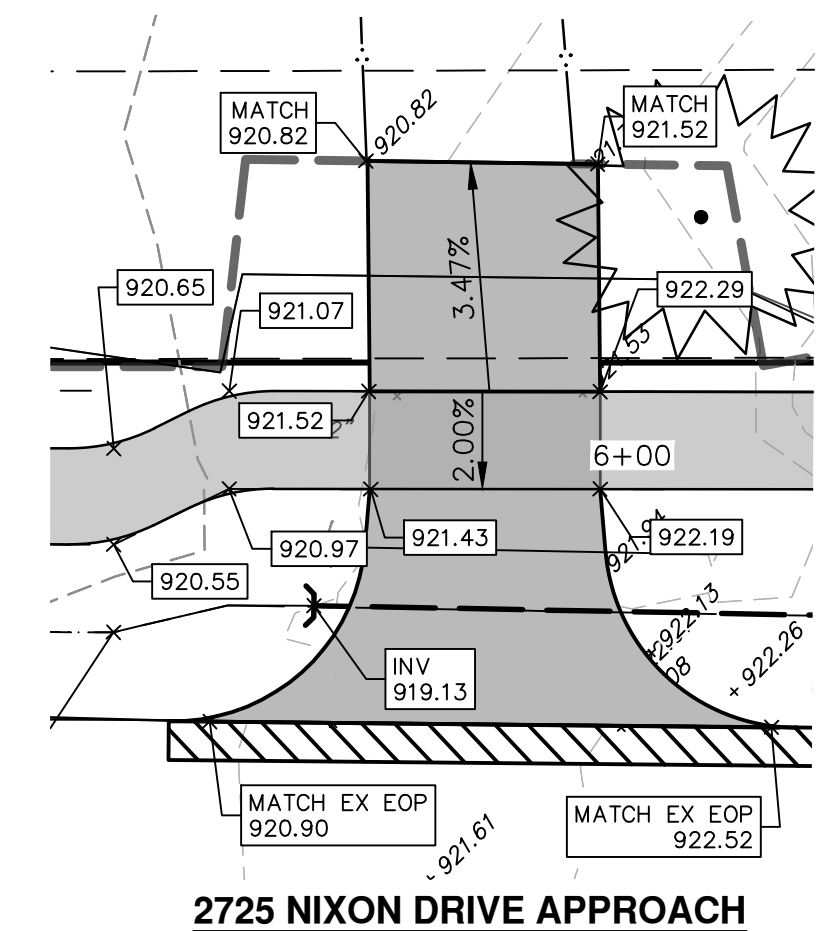
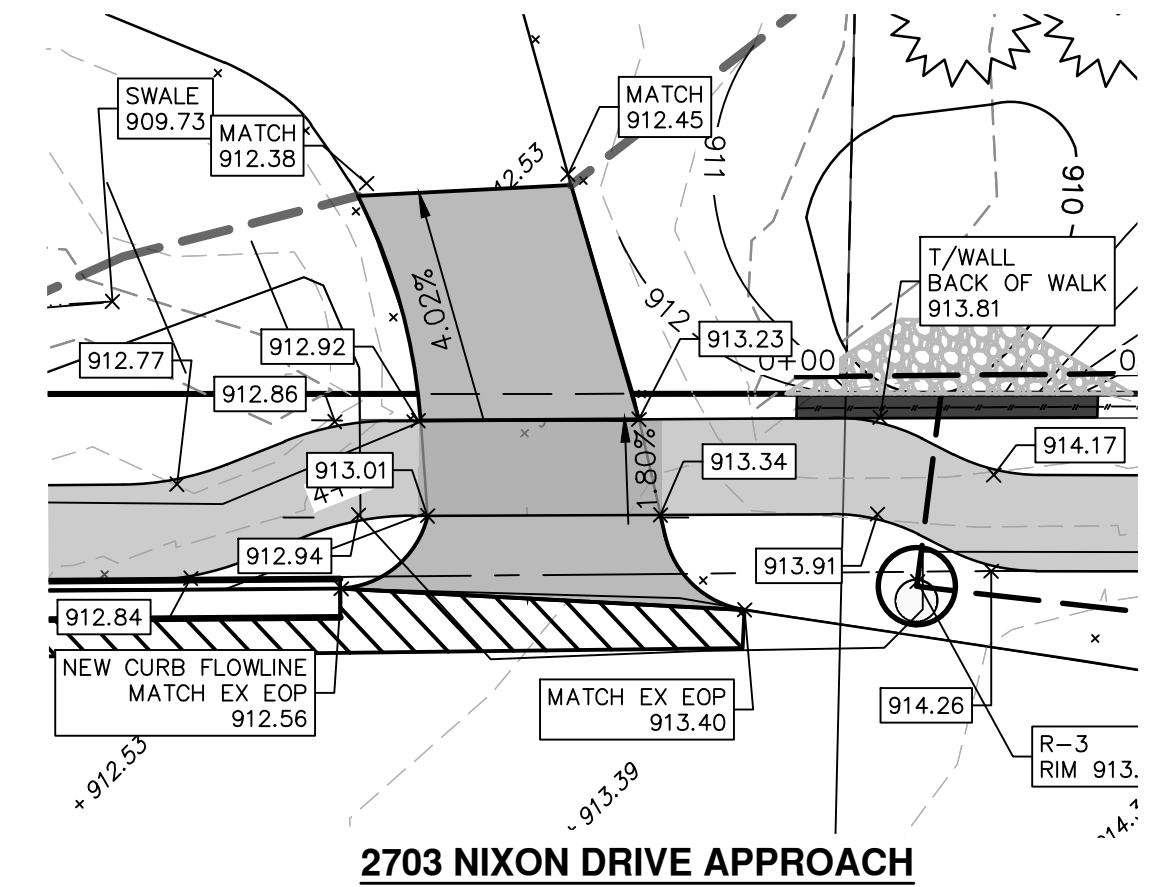
CITY OF ANN ARBOR - ENGINEERING
PUBLIC SERVICES - ENGINEERING
SIDWALK GAP ELIMINATION - 2022
TRAVER NIXON
PROPOSED SIDEWALK STA. 5+50 - STA. 9+37

SCALE PLAN: 1" = 20'
DRAWING No. 2022007-16
SHEET No. 16 OF 24

R:\2022007_2022+ SW Gap Projects\CGP-PLTS-Traver-Nixon Detail Grades.dwg Dwg Created: 24-Mar-22 - Plot Date: 25-Mar-22



NOTE: IF THE CONSTRUCTED SIDEWALK IS FOUND TO EXCEED THE MAXIMUM TRANSVERSE SLOPE OF 2% OR LONGITUDINAL SLOPE AT RAMPS OF 8.3%, THE SIDEWALK SHALL BE REMOVED AND REPLACED AT THE EXPENSE OF THE CONTRACTOR.



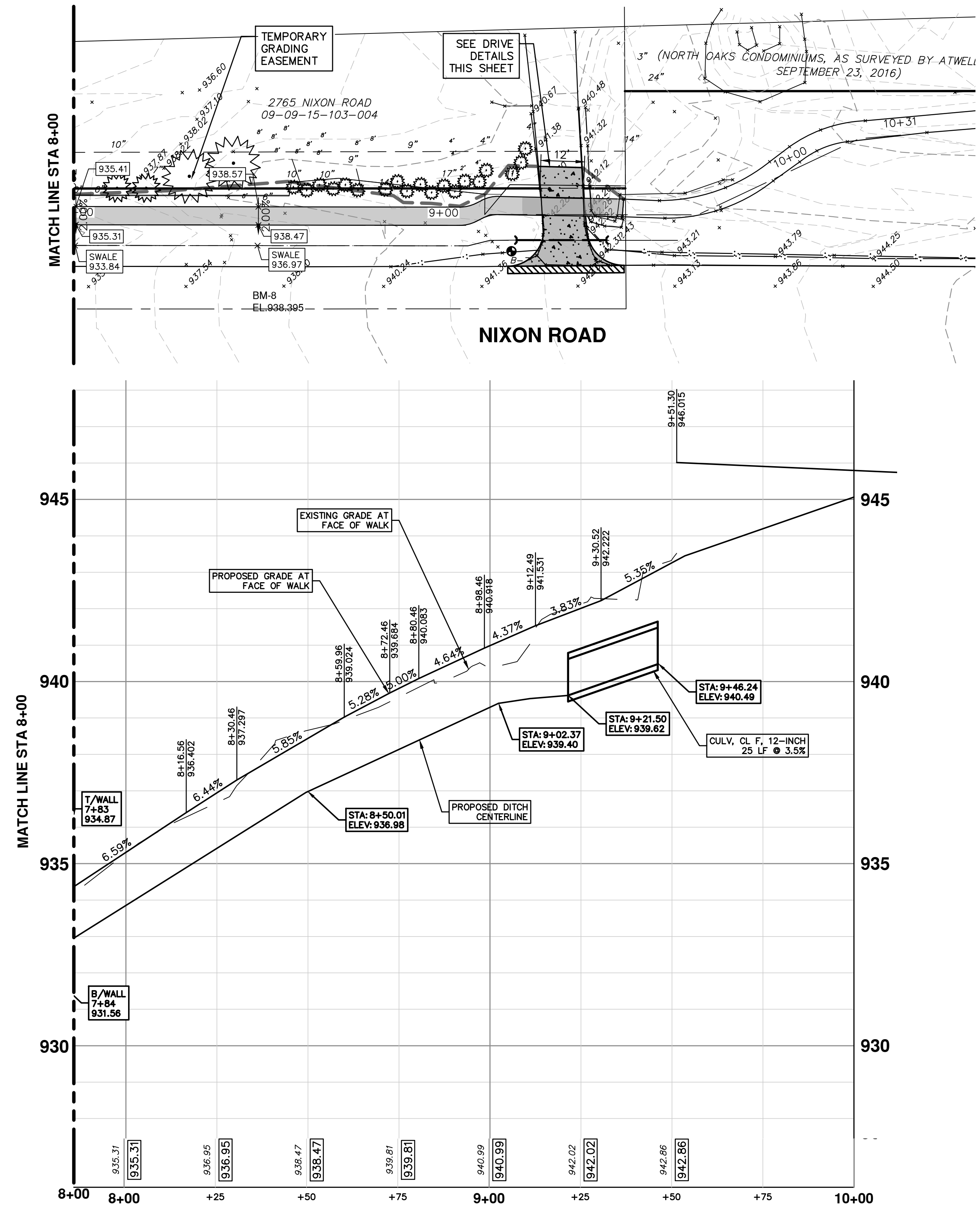
811
Know what's below. Call before you dig.

01 ADDENDUM #1
00 OUT TO BID
DATE
DESCRIPTION
REV.

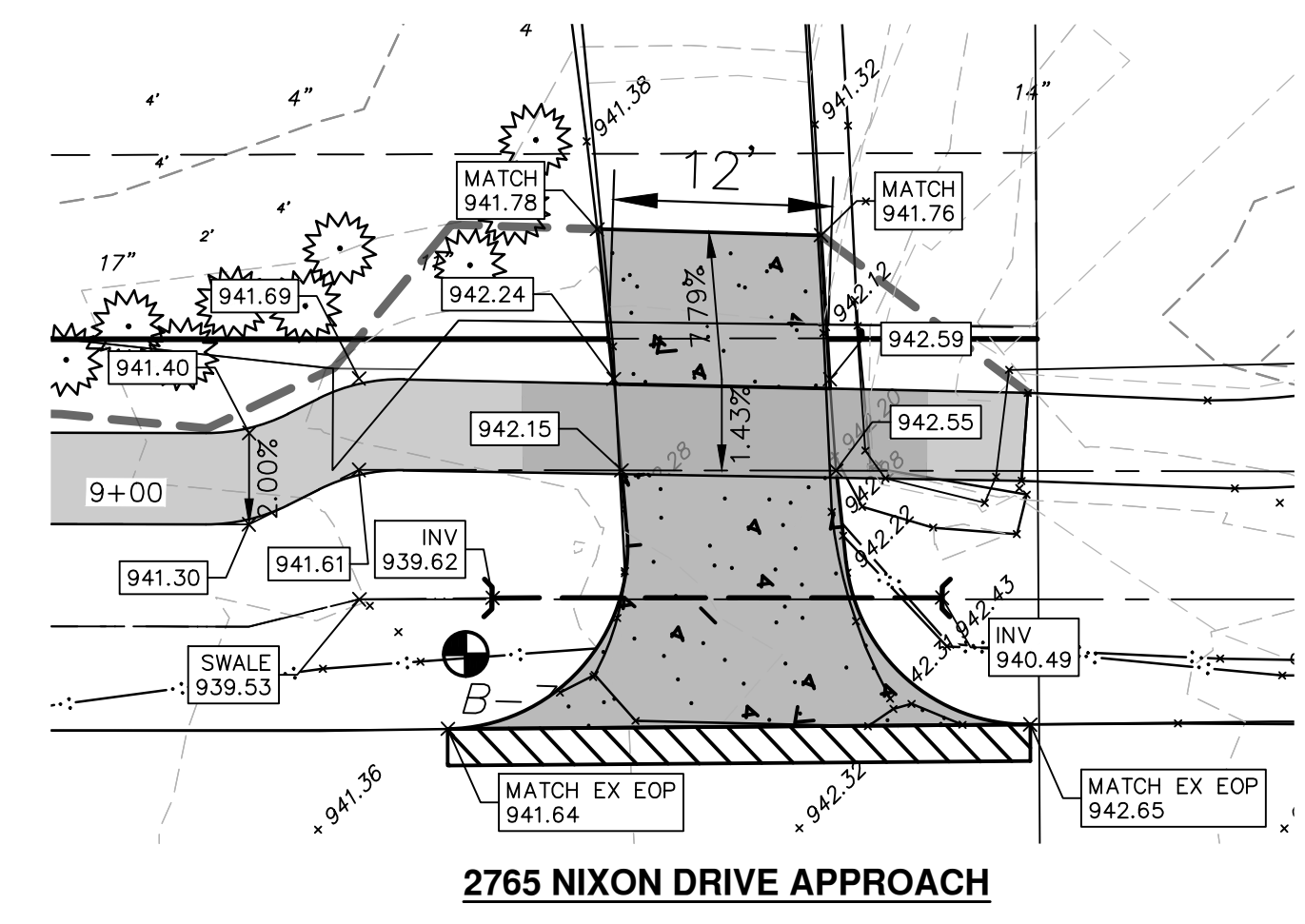
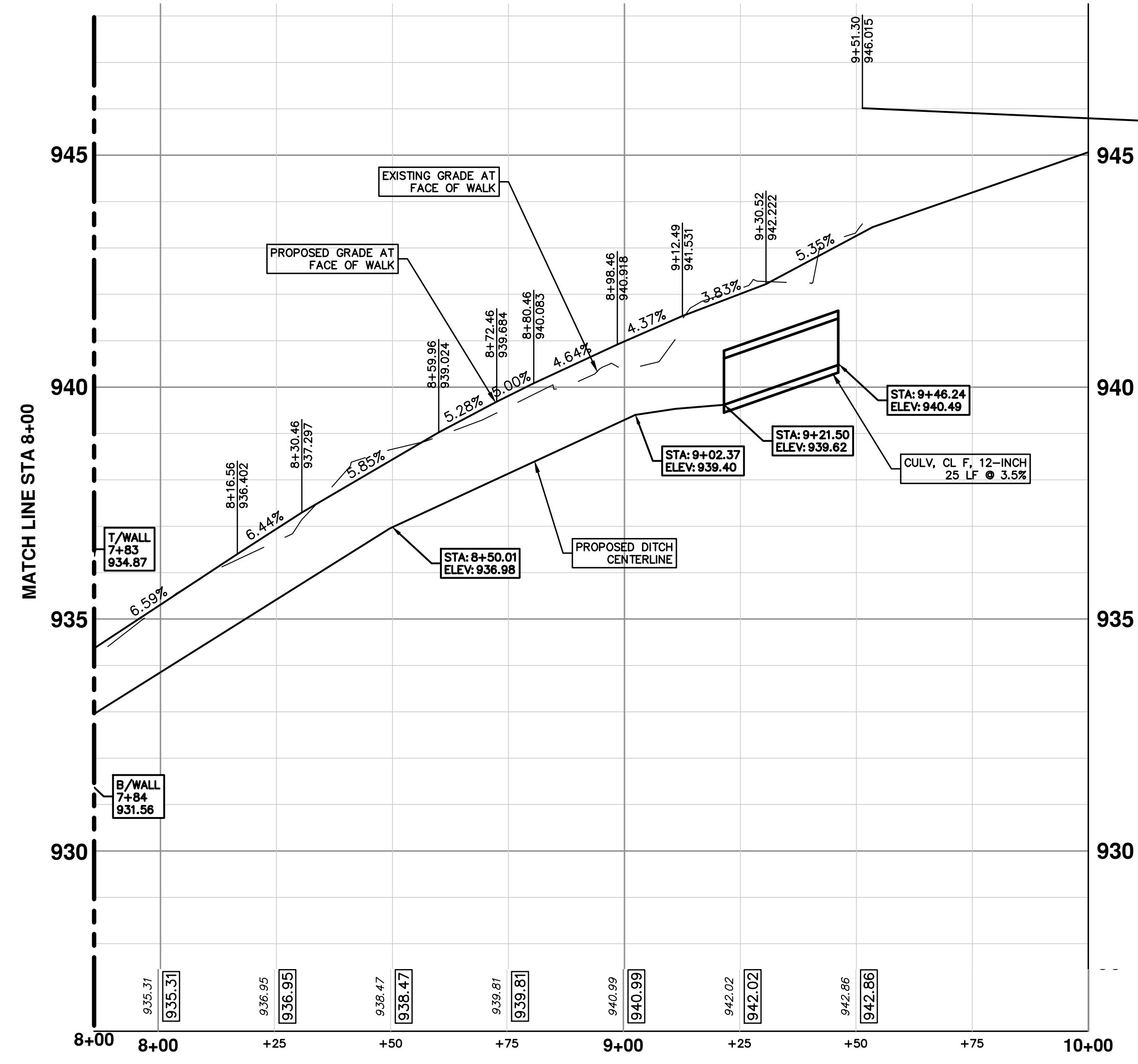
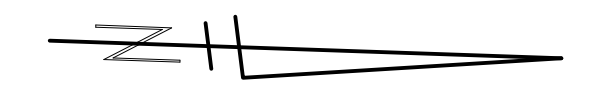
CITY OF ANN ARBOR - PUBLIC SERVICES - ENGINEERING
SIDEWALK GAP ELIMINATION - 2022
 TRAVER NIXON
 DETAILED GRADES NIXON RD STA. 4+00 - STA. 8+00

SCALE PLAN: 1" = 20'
PROFILE: 1" = 2'

DRAWING NO. 2022007-18
SHEET NO. 18 OF 24



NOTE: IF THE CONSTRUCTED SIDEWALK IS FOUND TO EXCEED THE MAXIMUM TRANSVERSE SLOPE OF 2% OR LONGITUDINAL SLOPE AT RAMPS OF 8.3%, THE SIDEWALK SHALL BE REMOVED AND REPLACED AT THE EXPENSE OF THE CONTRACTOR.



811
Know what's below. Call Before you dig.

01	ADDENDUM #1	3-25-22	KB/DF	TB	CHECKED
00	OUT TO BID	3-4-22	KB/DF/CC	TB	DRAWN
	REV.	DATE	DESCRIPTION		

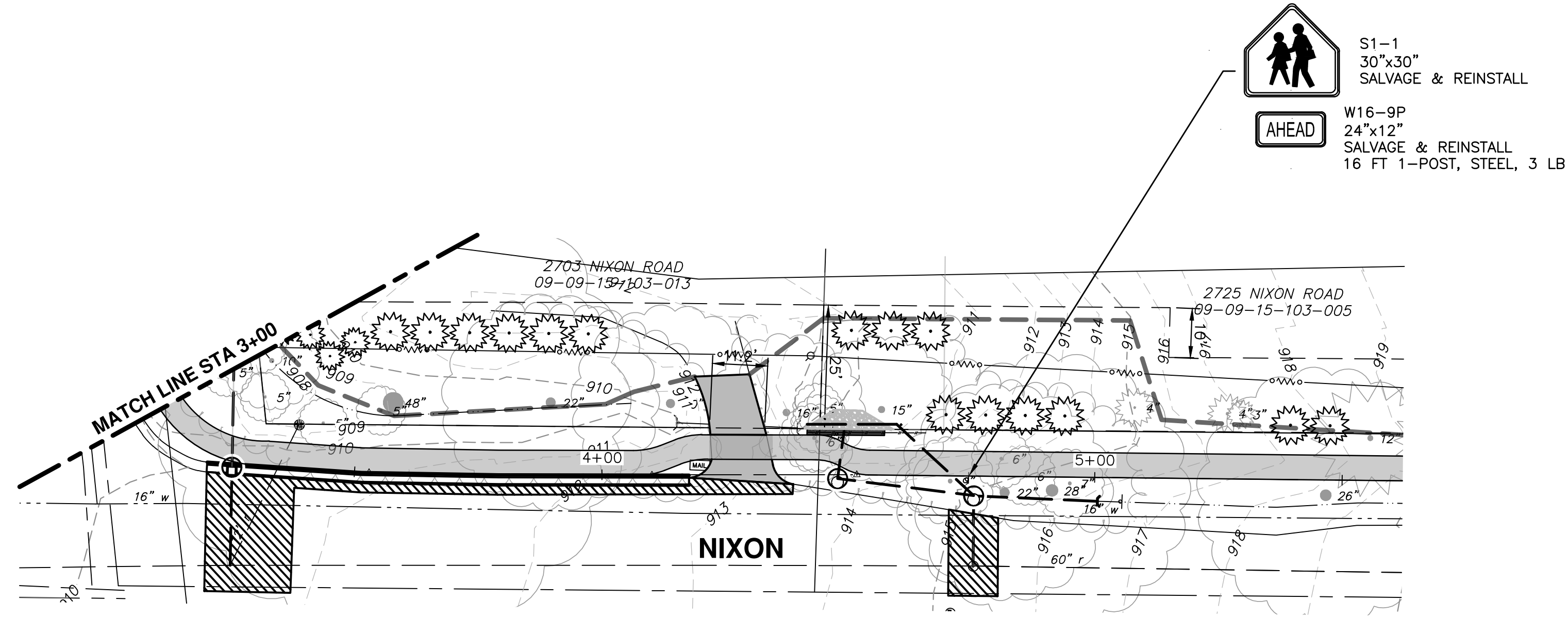
CITY OF ANN ARBOR
PUBLIC SERVICES
301 EAST HURON STREET
ANN ARBOR MI 48106-8647
www.a2gov.org

CITY OF ANN ARBOR - PUBLIC SERVICES - ENGINEERING
SIDEWALK GAP ELIMINATION - 2022
TRAVER NIXON
DETAILED GRADES NIXON RD. STA. 8+00 - P.O.E.

SCALE PLAN: 1" = 20'
PROFILE: 1" = 2'

DRAWING No. 2022007-19

SHEET No. 19 OF 24



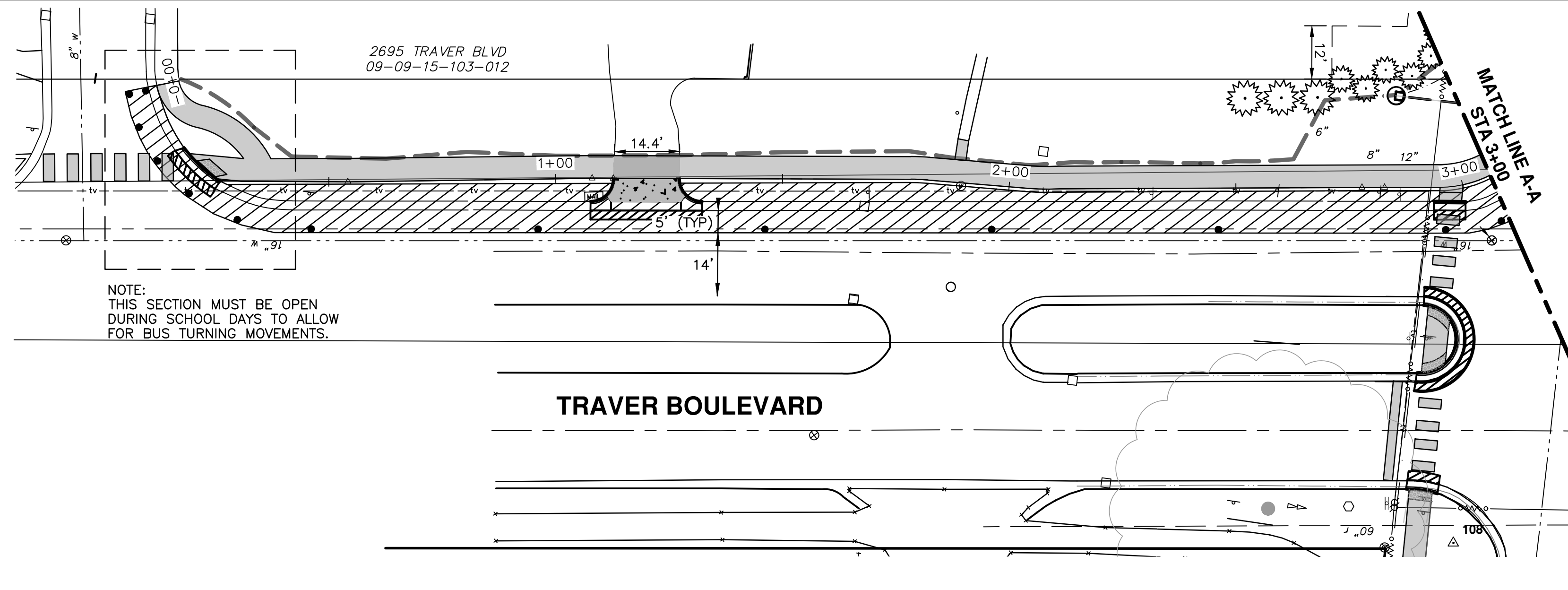
CITY OF ANN ARBOR
 PUBLIC SERVICES
 301 EAST HURON STREET
 ANN ARBOR, MI 48106-8647
 734.794.4410
 www.a2gov.org

REV.	DESCRIPTION
01	ADDENDUM #1
00	OUT TO BID

DATE	DRAWN	CHECKED
3-4-22	KB/DF/CC	TB
3-25-22	KB/DF	TB



R:\2022007_2022+ SW Gap Projects\CRP-PLTS-MoI-02.dwg Dwg Created: 2-Mar-22 - _g2 standard bw.stb - Plot Date: 25-Mar-22

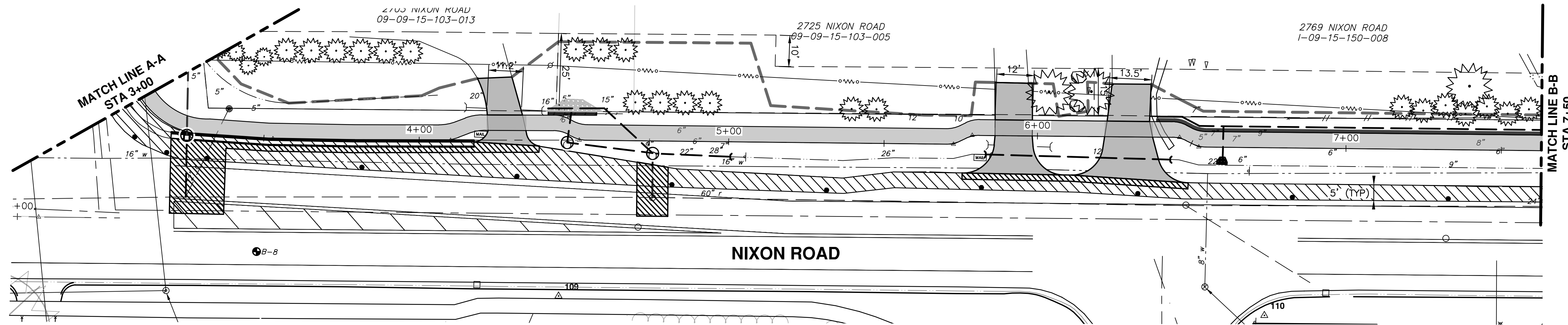


NOTE:
THIS SECTION MUST BE OPEN
DURING SCHOOL DAYS TO ALLOW
FOR BUS TURNING MOVEMENTS.

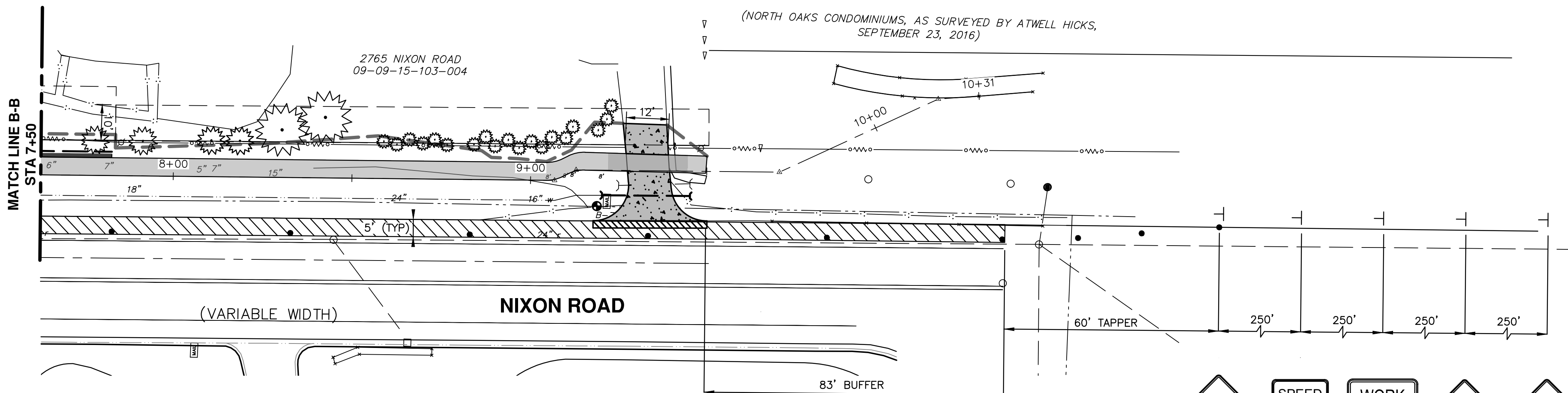
TRAVER BOULEVARD



W20-1



NIXON ROAD

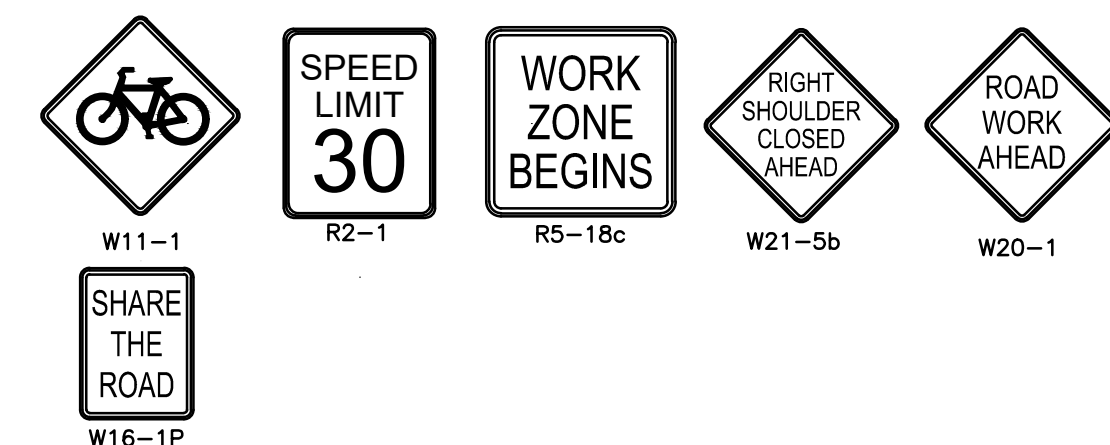


NIXON ROAD

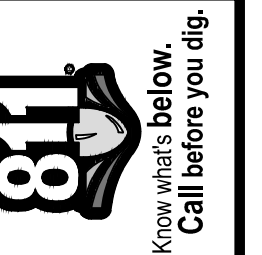
(NORTH OAKS CONDOMINIUMS, AS SURVEYED BY ATWELL HICKS,
SEPTEMBER 23, 2016)

PEDESTRIANS:
NO EXISTING SIDEWALK ON WEST SIDE OF
NIXON RD. EAST SIDE SIDEWALK WILL BE
MAINTAINED. ANY NEW SIDEWALK AND
CROSSWALKS WILL NOT BE OPEN UNTIL
THE END OF ALL CONSTRUCTION.

BICYCLISTS:
SB CYCLISTS WILL SHARE THE VEHICLE
LANE. NB BIKE LANES WILL BE
MAINTAINED.



LEGEND
 T TEMPORARY SIGN
 ● CHANNELIZING DEVICE
 ▨ WORK ZONE



REV.	DATE	DRAWN	CHECKED	DESCRIPTION
01	3-25-22	KB/DF	TB	ADDENDUM #1
00	3-4-22	KB/DF/CC	TB	OUT TO BID

CITY OF ANN ARBOR
PUBLIC SERVICES
301 EAST HURON STREET
ANN ARBOR, MI 48107-8647
ANN ARBOR 734.794.4110
www.aagov.org



CITY OF ANN ARBOR - PUBLIC SERVICES - ENGINEERING
 SIDEWALK GAP ELIMINATION - 2022
 TRAVER NIXON
 MAINTENANCE OF TRAFFIC - SB NIXON

SCALE PLAN: 1" = 20'
 DRAWING No. 2022007-24
 SHEET No. 24 OF 24