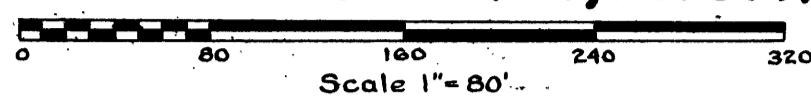


BROOKRIDGE HEIGHTS PART OF THE SOUTH 1/2 SECTION 20, T2S, R6E CITY OF ANN ARBOR, ANN ARBOR TOWNSHIP, WASHTENAW COUNTY, MICHIGAN



Note: All dimensions are given in feet and decimals thereof.

DEDICATION

KNOW ALL MEN BY THESE PRESENTS: That we, Laura P. Brooks a widow, as proprietor, Charles L. Brooks, single, as proprietor, and John Hatto and Ona Hatto husband and wife, as proprietors have caused the land embraced in the annexed plat to be surveyed, laid out and platted, to be known as BROOKRIDGE HEIGHTS, Part of the South 1/2, Section 20, T2S, R6E including a replat of Lot 1, Block 17, Hiscock's Addition and Lots 3, 4, 5, 6 & 7, Block 3, Daniel Hiscock's 2nd Addition, all in the City of Ann Arbor, Ann Arbor Township, Washtenaw County, Michigan and that the streets and alleys as shown on said plat are hereby dedicated to the use of the public. Signed and Sealed in Presence of

John R. Meadows
JOHN R. MEADOWS
B. E. Fryer
B. E. FRYER
W. C. Taylor
W. C. TAYLOR
John Hatto
JOHN HATTO
Ona Hatto
ONA HATTO
Laura P. Brooks
Laura P. Brooks
Charles L. Brooks
Charles L. Brooks (L.S.)
John Hatto
John Hatto (L.S.)
Ona Hatto
Ona Hatto (L.S.)

STATE OF MICHIGAN } ss
County of Washtenaw }

On this 20th day of Feb, 1951 before me a Notary Public in and for said county, personally came the above named Laura P. Brooks, a widow, Charles L. Brooks, single, and John and Ona Hatto, husband and wife, known to me to be the persons who executed the above dedication, and acknowledged the same to be their free act and deed.

John R. Meadows
Notary Public, Washtenaw Co., Michigan
My Commission expires 1-27-54 JOHN R. MEADOWS

DESCRIPTION

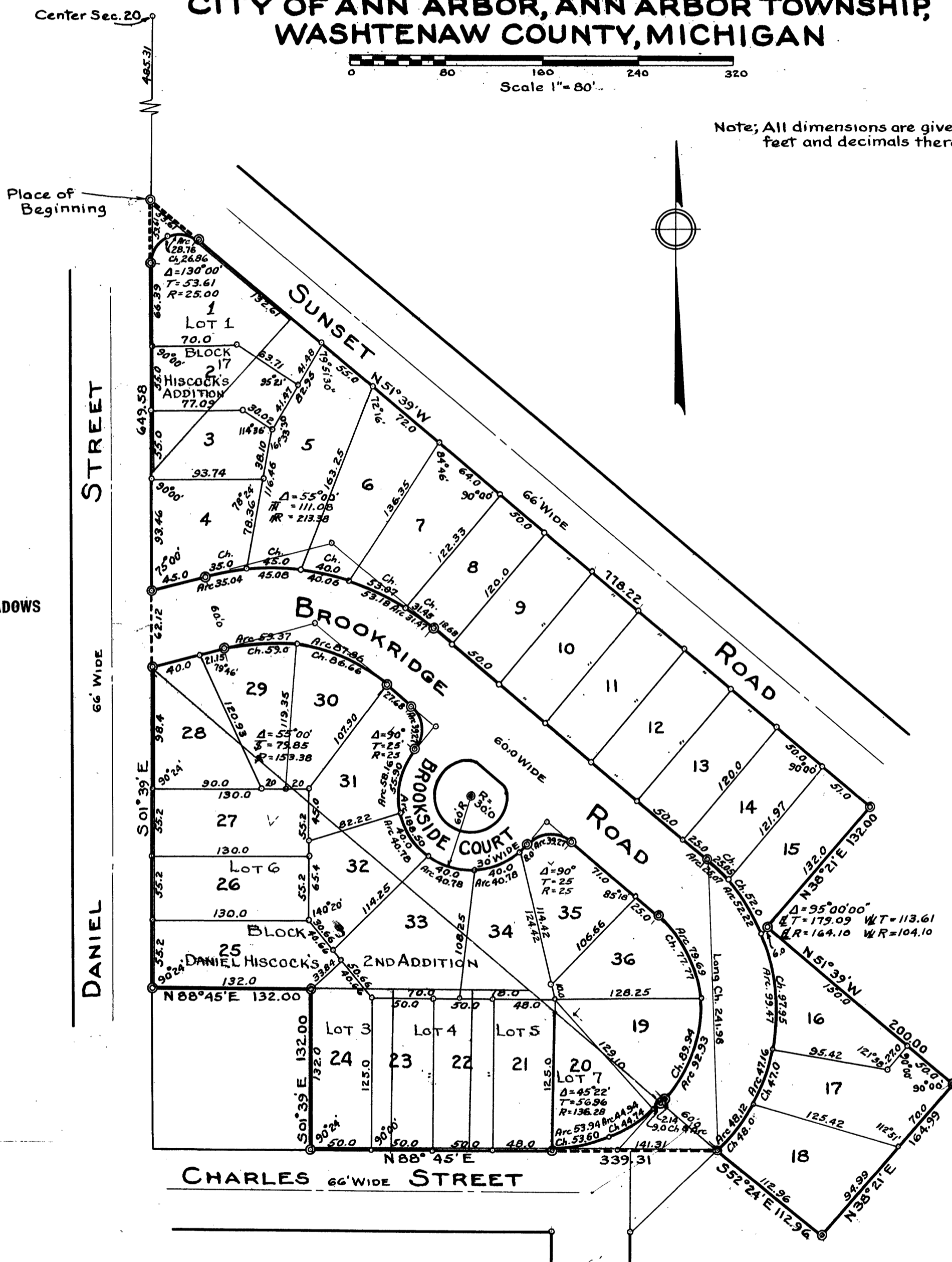
The land embraced in the annexed Plat of BROOKRIDGE HEIGHTS, Part of the South 1/2, Section 20, T2S, R6E including a replat of Lot 1, Block 17, Hiscock's Addition and Lots 3, 4, 5, 6 & 7, Block 3, Daniel Hiscock's 2nd Addition, all in the City of Ann Arbor, Ann Arbor Township, Washtenaw County, Michigan is described as follows; Commencing at an iron pipe marking the center of section 20, T2S, R6E City of Ann Arbor, Ann Arbor Township, Washtenaw County, Michigan; thence, southerly 485.31 feet to a concrete marker marking the intersection of the easterly line of Daniel Street and the southwesterly line of Sunset Road for a Place of Beginning; thence, S 01° 39' E 649.58 feet; thence, N 88° 45' E 132.00 feet; thence, S 01° 39' E 132.00 feet; thence, N 88° 45' E 339.31 feet; thence, S 52° 24' E 112.96 feet; thence, N 38° 21' E 164.99 feet; thence, N 51° 39' W 200.00 feet; thence, N 38° 21' E 132.00 feet; thence, N 51° 39' W 118.22 feet to the Place of Beginning.

CERTIFICATE OF MUNICIPAL APPROVAL

This Plat was approved by the Board of Public Works of the city of Ann Arbor at a meeting held February 7, 1951

Fred J. Looker
FRED J. LOOKER Clerk

COPY
Register's Office } ss
Washtenaw County, }
Plat of Brookridge Heights
City of Ann Arbor
was Recorded this 10th day of
April, A.D., 1951 at 11 o'clock
A.M. in Liber 11 of Plats
on Page 13
Leigh H. Thomas
Leigh H. Thomas
Register of Deeds



I HEREBY CERTIFY THAT THIS COPY IS A TRUE COPY OF THE MAP OR PLAT FORWARDED TO THE REGISTER OF DEEDS FOR RECORDING.

Examined and Approved
April 9, 1951
Mayme Jewell Purdy
Mayme Jewell Purdy
DEPUTY AUDITOR GENERAL

Examined and Approved
April 9, 1951
Mayme Jewell Purdy
Mayme Jewell Purdy
DEPUTY AUDITOR GENERAL

FILED IN AUDITOR GENERAL'S DEPT.
April 11, 1951
Mayme Jewell Purdy
Mayme Jewell Purdy
DEPUTY AUDITOR GENERAL

COUNTY TREASURER'S CERTIFICATE RELATING TO TAXES

OFFICE OF COUNTY TREASURER, WASHTENAW COUNTY.
I hereby certify, that there are no tax liens or titles held by the State on the lands described hereon, and that there are no tax liens or titles held by individuals on said lands, for the five years preceding the 20th day of Feb, 1951 and that the taxes for said period of five years are paid, as shown by the records of this office. This certificate does not apply to taxes, if any, now in process of collection by township, city or village collecting officers.

W. F. Verner
W. F. VERNER County Treasurer

CERTIFICATE OF APPROVAL BY THE BOARD OF COUNTY AUDITORS

Approved by the Board of County Auditors of Washtenaw County, Michigan, this 20th day of March, 1951

J. Martin Rempp
J. Martin Rempp, Chairman
Adolph F. Cross
Adolph F. Cross

John E. Walz
John Walz

CERTIFICATE OF APPROVAL BY THE PLANNING COMMISSION

This Plat was approved by the Planning Commission of the City of Ann Arbor at a meeting held FEB 22, 1951

John R. McMullen
John R. McMullen, Chairman
Frederick N. McComber
Frederick N. McComber, Secretary

SURVEYOR'S CERTIFICATE

I hereby certify, that the plat hereon delineated is a correct one and that permanent metal monuments consisting of bars not less than one half inch in diameter and 48 inches in length encased in a concrete cylinder at least 4 inches in diameter and 48 inches in depth have been placed at points marked thus \odot as thereon shown at all angles in the boundaries of the land platted, at all intersections of streets, intersections of alleys, or of streets and alleys, and at the intersections of streets and alleys with the boundaries of the plat as shown on said plat.

Geo. M. Bleekman
Geo. M. Bleekman, Registered Land Surveyor

CERTIFICATE OF MUNICIPAL APPROVAL

This plat was approved by the Common Council of the city of Ann Arbor at a meeting held February 27, 1951

Fred J. Looker
FRED J. LOOKER Clerk