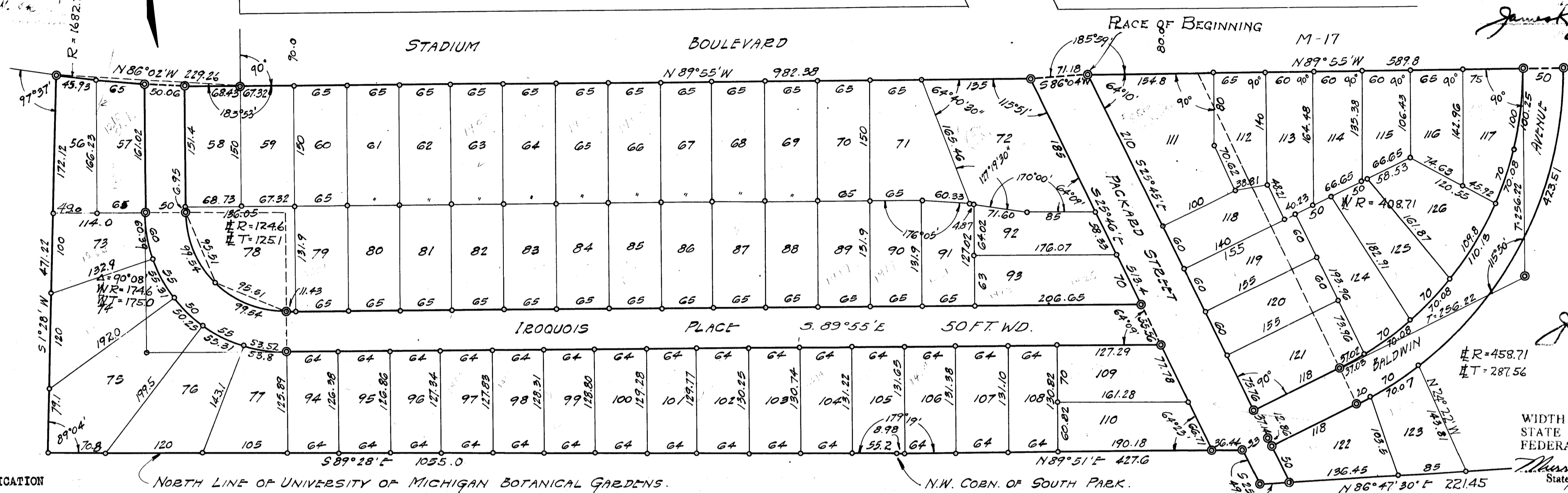
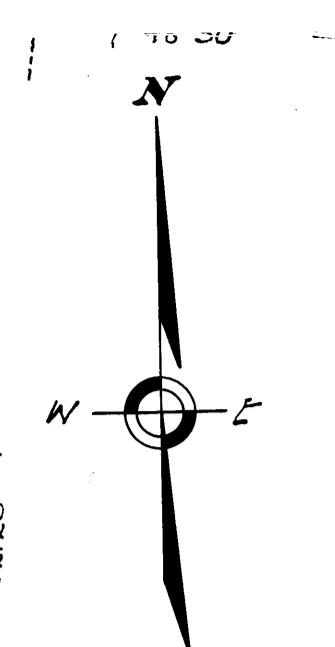


**FRISINGER LAND COMPANY'S SECOND SUBDIVISION**  
 IN THE CITY OF ANN ARBOR, WASHTENAW COUNTY, MICHIGAN  
 PART OF THE SOUTH HALF SECTION 33 T.2 S. R.6 E., WASHTENAW COUNTY, MICHIGAN

*James K. Johnson*

DIMENSIONS ARE GIVEN IN FEET AND DECIMALS THEREOF. CHORD LENGTHS ARE SHOWN INTERIOR OF CURVES. ARC LENGTHS ARE SHOWN EXTERIOR OF CURVES.

W. H. Frisinger Land Company  
 Second Subdivision  
 27  
 31 1/2 1/2  
 1/2 1/2  
 1/2 1/2



*James K. Johnson*

WIDTH AND LOCATION OF STATE TRUNK LINE AND FEDERAL AID ROADS O. K.  
*Thomas M. Wagoner*  
 State Highway Commissioner

KNOW ALL MEN BY THESE PRESENTS, That we....., his wife  
 and....., his wife  
 as proprietors have caused the land embraced in the annexed plat to be surveyed, laid out and platted, to be known as Frisinger Land Company's Second Subdivision, in the City of Ann Arbor, Washtenaw County, Michigan, part of the south half of section 33, T. 2 S., R. 6 E., Washtenaw County, Michigan and that the streets and alleys as shown on said plat are hereby dedicated to the use of the public.

Signed and sealed in the presence of  
*William A. Zahn* L.S.  
*Agatha B. Zahn* L.S.  
*Robert J. Zahn* L.S.

STATE OF MICHIGAN  
 County of Washtenaw  
 On this..... day of..... 1937, before me, a notary public in and for said County, personally came the above named..... and..... his wife, known to me to be the persons who executed the above dedication, and acknowledged the same to be their free act and deed.  
*William H. White*  
 Notary Public, Washtenaw County, Michigan.  
 My commission expires.....

respectively of the Frisinger Land Company, a Michigan Corporation and that the seal to said instrument is the corporate seal of said corporation and that said instrument was signed and sealed in behalf of said corporation by authority of its board of Directors and the said Louis C. Andrews and Edward F. Conlin acknowledged said instrument to be the free act and deed of said corporation.

*Robert A. Exermann*  
 Notary Public, Washtenaw County, Michigan.  
 My commission expires.....

DESCRIPTION  
 Beginning at an iron pipe and concrete monument marking the intersection of the south line of M-17 or Stadium Boulevard with the north easterly line of Packard Street as shown on the plat of Frisinger Land Company's Subdivision, in the City of Ann Arbor, Washtenaw County, Michigan, a part of the south-half of section 33, T. 2 S., R. 6 E., Washtenaw County Michigan; thence south 86 degrees, 4 minutes west 71.18 feet; thence north 89 degrees, 55 minutes west 982.38 feet; thence in the arc of a circular curve to the right of radius of 1682.25 feet thru a central angle of 7 degrees, 48 minutes and 30 seconds a distance of 229.26 feet; thence south 1 degree, 28 minutes west 471.22 feet; thence south 89 degrees, 28 minutes east 1055.00 feet to the north west corner of South Park; thence north 89 degrees, 51 minutes east 427.60 feet to the center line of Packard Street; thence south 25 degrees, 14 minutes east 49.32 feet; thence north 86 degrees, 57 minutes east 35.58 feet; thence north 86 degrees, 47 minutes, 30 seconds east 221.45 feet; thence north 24 degrees, 22 minutes west 143.81 feet to the intersection of a circular curve of radius 458.71 feet; thence north easterly in the arc of said curve which is convex to the south east a distance of 423.51 feet to the south line of Stadium Boulevard, the curve above mentioned beginning at a point in the south line of Stadium Boulevard 589.8 feet South 89 degrees, 55 minutes east from the place of beginning, the tangent being at right angles to Stadium Boulevard and 287.56 feet in length; thence north 89 degrees, 55 minutes west 589.8 feet to the place of beginning and being a part of the south one half of section 33, T. 2 S., R. 6 E., Washtenaw County, Michigan.

SURVEYOR'S CERTIFICATE  
 I hereby certify, that the plat hereon delineated is a correct one and that permanent metal monuments of not less than one inch in diameter and fifteen inches in length set in a concrete base at least of four inches in diameter and forty-eight inches in depth have been placed at points marked thus © as hereon shown at all angles in the boundaries of the land platted, at all intersections of streets, intersection of alleys, or of streets and alleys and at the intersections of streets and alleys with the boundaries of the plat as shown on said plat.  
*H. H. Atwell*  
 Registered Surveyor and Civil Engineer.

CERTIFICATE OF APPROVAL BY THE COMMON COUNCIL  
 This plat was approved by the Common Council of the City of Ann Arbor at a meeting held..... day of..... 1937.  
*Harold Perry*  
 Clerk

CERTIFICATE OF APPROVAL BY THE BOARD OF PUBLIC WORKS  
 This plat was approved by the Board of Public Works of the City of Ann Arbor at a meeting held..... day of..... 1937.  
*Harold Perry*  
 Clerk

CERTIFICATE OF APPROVAL BY THE BOARD OF COUNTY AUDITORS  
 Approved by the Board of County Auditors of Washtenaw County, Michigan this..... day of..... JUNE..... 1937.  
*H. H. Atwell*  
 Chairman.

CERTIFICATE AS TO STATE TRUNK LINE OR FEDERAL AID ROADS  
 We hereby certify that the plat appears to include land located on a State Trunk Line or federal aid road.  
*John Hill*  
*Frank Ferguson*  
*Charles S. Sanders*  
 County Road Commission  
 State Highway Commissioner.

COUNTY TREASURER'S CERTIFICATE RELATING TO TAXES  
 (Sec. 135, Act 206, 1893 as amended Sec. 4134, C.L. 1915)  
 Office of the County Treasurer, Washtenaw County, Michigan.  
 I hereby certify, That there are..... tax liens or titles held by the State on the lands described below, and that there are..... tax liens or titles held by individuals on said lands, for the five years preceeding the..... day of..... 1937 and that the taxes for said period of five years are..... paid, as shown by the records of this office.  
 This certificate does not apply to taxes, if any, now in process of collection by township, city or village collecting officers.

DESCRIPTION  
 Beginning at on iron pipe and concrete monument marking the intersection of the south line of M-17 or Stadium Boulevard with the north easterly line of Packard Street as shown on the plat of Frisinger Land Company's Subdivision, in the City of Ann Arbor, Washtenaw County, Michigan, a part of the south half of section 33, T. 2 S., R. 6 E., Washtenaw County, Michigan; thence south 86 degrees, 4 minutes west 71.18 feet; thence north 89 degrees, 55 minutes west 982.38 feet; thence in the arc of a circular curve to the right of radius 1682.25 feet thru a central angle of 7 degrees, 48 minutes and 30 seconds a distance of 229.26 feet; thence south 1 degree, 28 minutes west 471.22 feet; thence south 89 degrees, 28 minutes east 1055 feet to the north west corner of South Park; thence north 89 degrees, 51 minutes east 427.60 feet to the center line of Packard Street; thence south 25 degrees, 14 minutes east 49.32 feet; thence north 86 degrees, 57 minutes east 35.58 feet; thence north 86 degrees, 47 minutes, 30 seconds east 221.45 feet; thence north 24 degrees, 22 minutes west 143.81 feet to the intersection of a circular curve of radius 458.71 feet; thence north easterly in the arc of said circular curve which is convex to the south east a distance of 423.51 feet to the said south line of Stadium Boulevard, the curve above mentioned beginning at a point in the south line of Stadium Boulevard 589.8 feet South 89 degrees 55 minutes east from the place of beginning, the tangent being at right angles to Stadium Boulevard and 287.56 feet in length; thence north 89 degrees, 55 minutes west 589.8 feet to the place of beginning and being a part of the south one half of section 33, T. 2 S., R. 6 E., Washtenaw County, Michigan.  
*Harold Perry*  
 County Treasurer.

KNOW ALL MEN BY THESE PRESENTS, That we the Frisinger Land Company, a Michigan Corporation by Louis C. Andrews, Vice President, and Edward F. Conlin, Secretary, as proprietors have caused the land embraced in the annexed plat to be surveyed, laid out and platted to be known as Frisinger Land Company's Second Subdivision in the City of Ann Arbor, Washtenaw County, Michigan, part of the south half of Section 33, T. 2 S., R. 6 E., Washtenaw County, Michigan, and that the streets and alleys as shown on said plat are hereby dedicated to the use of the public.  
 Signed and sealed in the presence of  
*Robert A. Exermann* Vice-Pres.  
*Edward F. Conlin* Sec.  
 STATE OF MICHIGAN  
 County of Washtenaw  
 On this..... day of..... A.D. 1937  
 before me, *Robert A. Exermann*, a Notary Public in and for said County appeared Louis C. Andrews and Edward F. Conlin, to me personally known, who being each by me duly sworn did say that they are the resident and secretary