

"GEDDES FARMS SUBDIVISION"

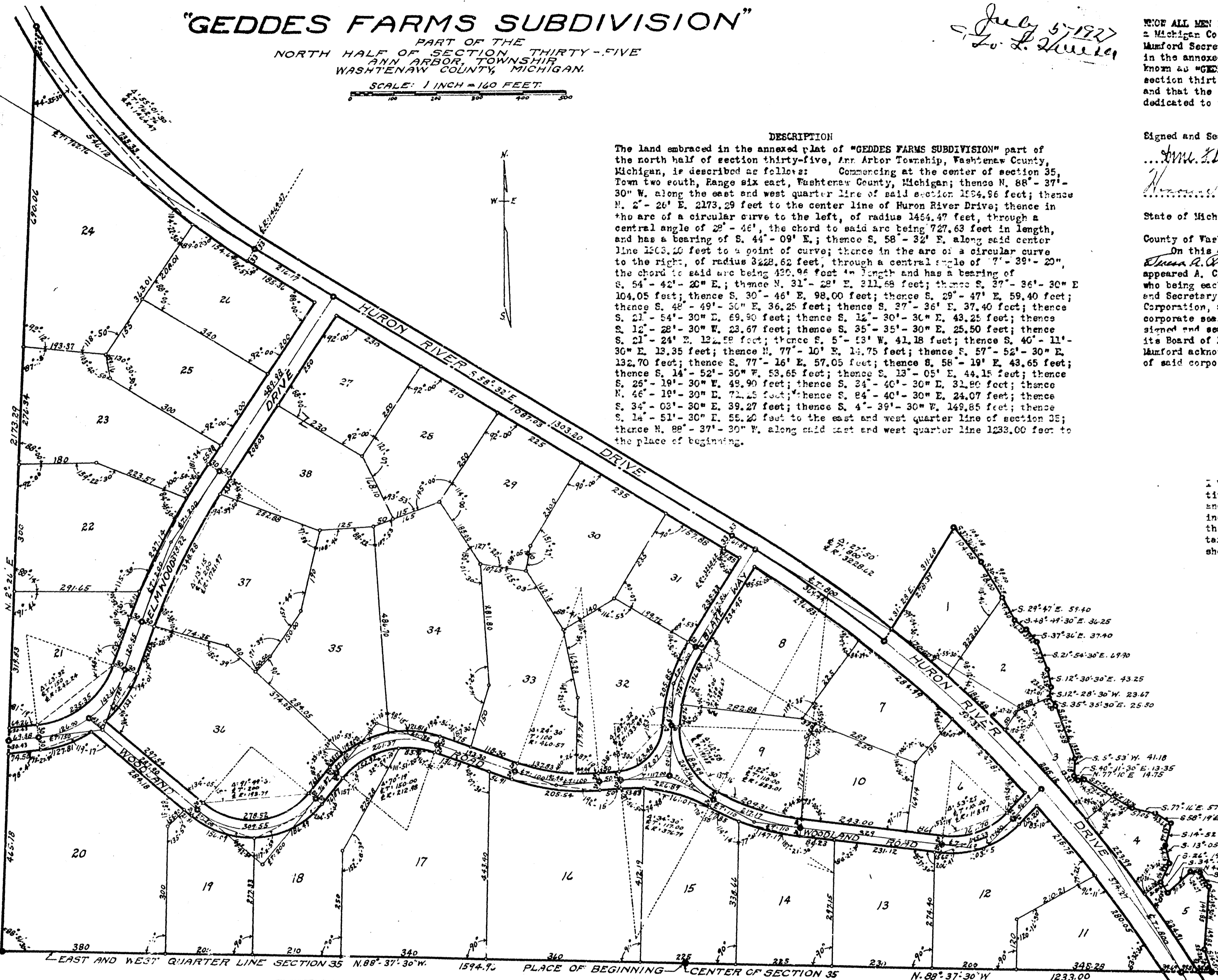
PART OF THE THIRTY-FIVE
NORTH HALF SECTION
ANN ARBOR TOWNSHIP
WASHTENAW COUNTY, MICHIGAN.

SCALE: 1 INCH = 160 FEET

DESCRIPTION

The land embraced in the annexed plat of "GEDDES FARMS SUBDIVISION" part of the north half of section thirty-five, Ann Arbor Township, Washtenaw County, Michigan, is described as follows: Commencing at the center of section 35, Town two south, Range six east, Washtenaw County, Michigan; thence N. 88°-37'-30" W. along the east and west quarter line of said section 1594.76 feet; thence N. 2°-26' E. 2173.29 feet to the center line of Huron River Drive; thence in the arc of a circular curve to the left, of radius 1454.47 feet, through a central angle of 22°-46', the chord to said arc being 727.63 feet in length, and has a bearing of S. 44°-09' E.; thence S. 58°-32' E. along said center line 1503.20 feet to a point of curve; thence in the arc of a circular curve to the right, of radius 3228.62 feet, through a central angle of 7°-39'-23", the chord to said arc being 420.96 feet in length and has a bearing of S. 54°-42'-20" E.; thence N. 31°-28' E. 211.68 feet; thence S. 37°-36'-30" E. 104.05 feet; thence S. 30°-46' E. 98.00 feet; thence S. 29°-47' E. 59.40 feet; thence S. 48°-49'-50" E. 36.25 feet; thence S. 27°-36' E. 37.40 feet; thence S. 21°-54'-30" E. 69.90 feet; thence S. 14°-30'-30" E. 43.25 feet; thence S. 12°-28'-30" W. 23.67 feet; thence S. 35°-35'-30" E. 25.50 feet; thence S. 21°-24' E. 124.58 feet; thence S. 5°-13' W. 41.18 feet; thence S. 40°-11'-30" E. 13.35 feet; thence N. 77°-10' E. 14.75 feet; thence S. 57°-52'-30" E. 132.70 feet; thence S. 77°-16' E. 57.05 feet; thence S. 58°-19' E. 43.65 feet; thence S. 14°-52'-30" W. 53.65 feet; thence S. 13°-05' E. 44.15 feet; thence S. 25°-19'-30" W. 49.90 feet; thence S. 24°-40'-30" E. 31.80 feet; thence N. 46°-19'-30" E. 72.45 feet; thence S. 84°-40'-30" E. 24.07 feet; thence S. 34°-03'-30" E. 39.27 feet; thence S. 4°-39'-30" W. 148.85 feet; thence S. 14°-51'-30" E. 55.20 feet to the east and west quarter line of section 35; thence N. 88°-37'-30" W. along said east and west quarter line 1233.00 feet to the place of beginning.

July 5, 1927
L. H. Mumford



DEDICATION

KNOW ALL MEN BY THESE PRESENTS, That we, the "Huron Farms Company" a Michigan Corporation by A. C. Marshall, President, and S. C. Mumford Secretary, as proprietor, have caused the land embraced in the annexed plat to be surveyed, laid out and platted to be known as "GEDDES FARMS SUBDIVISION" part of the north half of section thirty-five, Ann Arbor Township, Washtenaw County, Michigan and that the streets and alleys as shown on said plat are hereby dedicated to the use of the public.

Signed and Sealed in the Presence of
A. C. Marshall, Vice-President
S. C. Mumford, Secretary
State of Michigan

County of Washtenaw ss
On this 10th day of June, 1927, before me
Dorcas A. Whitcomb, a Notary Public in and for said county
who being each by me duly sworn did say that they are the President
and Secretary respectively of the "Huron Farms Company" a Michigan
Corporation, and that the seal affixed to said instrument is the
corporate seal of said corporation and that said instrument was
signed and sealed in behalf of said corporation by authority of its
Board of Directors and the said A. C. Marshall and S. C.
Mumford acknowledged said instrument to be the free act and deed
of said corporation.

Dorcas A. Whitcomb
Notary Public, Washtenaw County, Michigan.
My Commission Expires Nov. 27, 1927

TAX CERTIFICATE OFFICE OF THE COUNTY TREASURER WASHTENAW COUNTY, MICHIGAN

I hereby certify, That there are no tax liens or titles held by the State on the lands described below, and that there are no tax liens or titles held by individuals on said lands, for the five years preceding the 10th day of June, 1927, and that the taxes for said period of five years are fully paid, as shown by the records of this office.

Frank H. Tinkner
County Treasurer.

SURVEYOR'S CERTIFICATE

I hereby certify that the plat hereon delineated is a correct one and that permanent metal monuments of not less than one inch in diameter and fifteen inches in length set in a concrete base at least four inches in diameter and forty-eight inches in depth have been placed at points marked thus o, as thereon shown at all angles in the boundaries of the land platted, at all the intersections of streets, intersections of alleys, or of streets and alleys, and at the intersections of streets and alleys with the boundaries of the plat as shown on said plat.

H. H. Atwell
Registered Civil Engineer.

CERTIFICATE OF APPROVAL BY THE BOARD OF COUNTY AUDITORS

This plat was approved by the Board of County Auditors of Washtenaw County, Michigan, at a meeting held June 24, 1927.

Walter M. Faulker
Chairman

REGISTER OF DEEDS Washtenaw County

RECEIVED for Record, the 6th
day of July, A. D. 1927

John S. Cummings
Register of Deeds

CERTIFICATE OF APPROVAL BY THE TOWNSHIP BOARD

This plat was approved by the Township Board of the Township 6 Ann Arbor, Washtenaw County, Michigan, at a meeting held June 18, 1927.

Edwin H. Leathers

Note: All dimensions are given in Feet and decimals thereof.