

LAUREL HILLS SUBDIVISION

A SUBDIVISION OF PART OF THE SOUTHEAST 1/4 OF SECTION 31 TOWN 2 SOUTH, RANGE 6 EAST, CITY OF ANN ARBOR, WASHTENAW COUNTY, MICHIGAN.

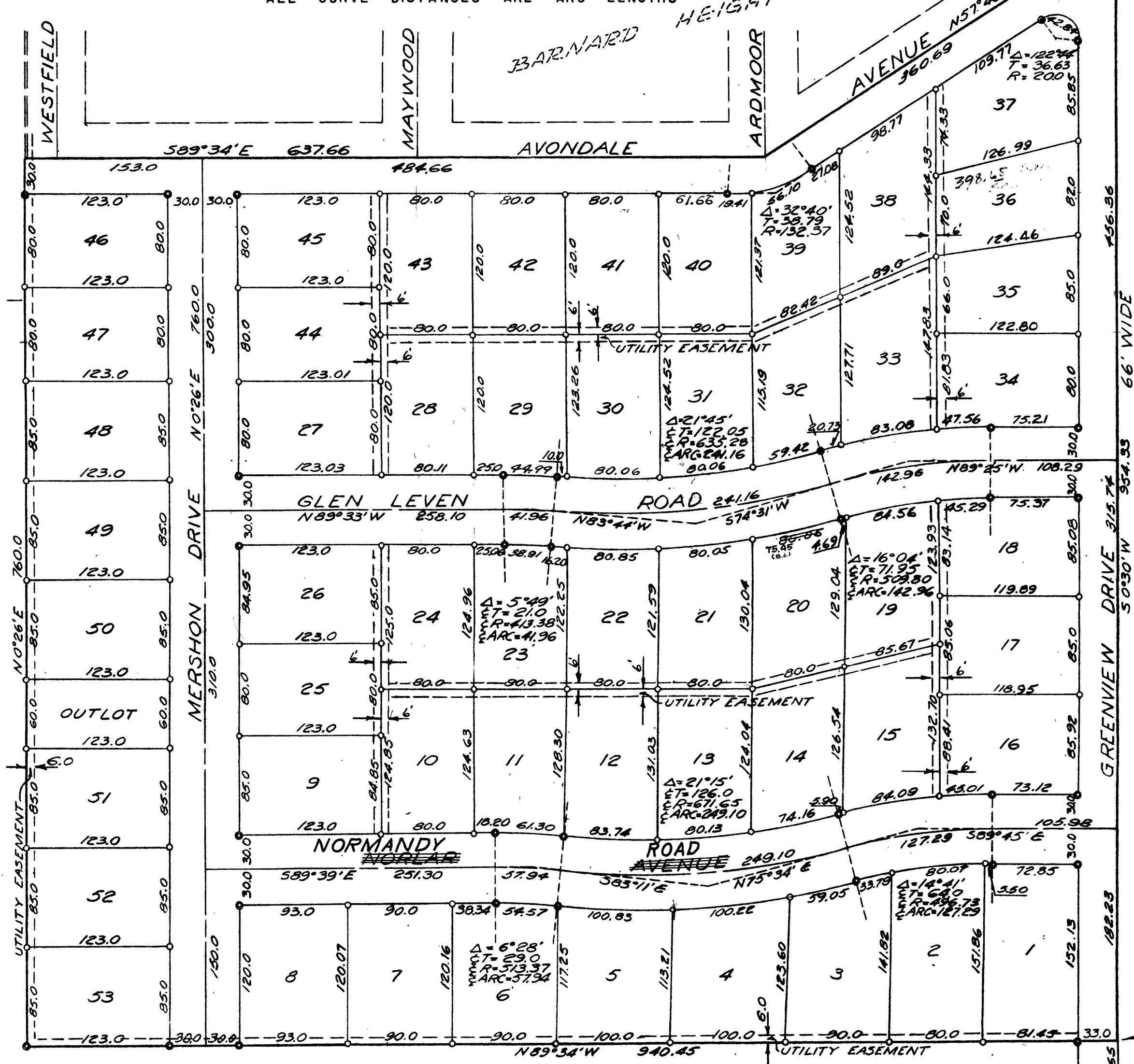


SCALE 1" = 80'

ALL DIMENSIONS IN FEET AND DECIMALS THEREOF
ALL CURVE DISTANCES ARE ARC LENGTHS

SUNNYSIDE
SUBDIVISION

NOT PLATTED



NOT PLATTED

WUERTH
SUBDIVISION

NOT
PLATTED



SURVEY BY ATWELL-HICKS, INC.

NOTE: NORLAR AVENUE CHANGED TO NORMANDY ROAD BY COUNCIL DEC. 3, 1956.

SCIO CHURCH ROAD

1 OF 2
03/27/1953

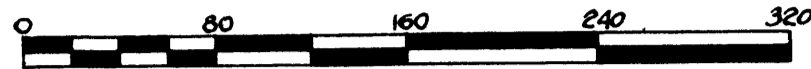
SE Cor. Sec. 3
T 2 S R 6 E
589°5'N 1046.26'

Place of Beginning

2027702
LAUREL HILLS SUBDIVISION
03/27/1953
2 of 2

LAUREL HILLS SUBDIVISION

A SUBDIVISION OF PART OF THE SOUTHEAST 1/4 OF SECTION 31 TOWN 2 SOUTH, RANGE 6 EAST, CITY OF ANN ARBOR, WASHTENAW COUNTY, MICHIGAN.



SCALE 1" = 80'

ALL DIMENSIONS IN FEET AND DECIMALS THEREOF
ALL CURVE DISTANCES ARE ARC LENGTHS

DEDICATION

KNOW ALL MEN BY THESE PRESENTS, that we, Raymond Barnard, and Ethel Barnard his wife, Eugene R. Young and Evelyn L. Young his wife, John C. Johnson and Lucile Agnes Johnson his wife as proprietors, have caused the land embraced in the annexed plat to be surveyed, laid out and platted, to be known as LAUREL HILLS SUBDIVISION a subdivision of part of the Southeast 1/4 of Section 31, Town 2 South, Range 6 East, City of Ann Arbor, Washtenaw County, Michigan and that the avenues, road & drives as shown on said plat are hereby dedicated to the use of the public.

DESCRIPTION OF LAND PLATTED

The land embraced in the annexed plat of LAUREL HILLS SUBDIVISION A subdivision of part of the Southeast 1/4 of Section 31, Town 2 South, Range 6 East, City of Ann Arbor, Washtenaw County, Michigan is described as follows: Commencing at the Southeast corner of Section 31, T2S, R6E, City of Ann Arbor, Michigan, thence S 89° 15' W 1046.26 feet, thence N 0° 30' E 824.65 feet for a place of beginning, thence N 89° 34' W 940.45 feet, thence N 0° 26' E 760.0 feet, thence S 89° 34' E 637.66 feet, thence N 57° 46' E 360.69 feet, thence S 0° 30' W 954.33 feet to the place of beginning.

APPROVAL BY COUNTY PLAT BOARD

This plat was approved on the 20th day of November 1953 by the Washtenaw County Plat Board

Thomas A. FitzGerald (County Register of Deeds)

J. Martin Rempff (Auditor)

Adolph F. Gross (Auditor)

Herbert G. Loeffler (Auditor)

CERTIFICATE OF APPROVAL BY THE CITY PLANNING COMMISSION

This plat was approved by the Planning Commission of the City of Ann Arbor, Michigan, at a meeting held on the 20 day of OCTOBER 1953.

John E. Swisher Jr. (Chairman)

Sybil K. Bennett (Secretary)

COUNTY TREASURER'S CERTIFICATE

Office of County Treasurer, Washtenaw County. I hereby certify, that there are no tax liens or titles held by the State on the lands described hereon, and that there are no tax liens or titles held by individuals on said lands, for the five years preceding the 19th day of November 1953 and that the taxes for said period of five years are all paid, as shown by the records of this office.

This certificate does not apply to taxes, if any, now in process of collection by township, city or village collecting officers.

W. F. Verner (County Treasurer)

SURVEYOR'S CERTIFICATE

I hereby certify that the plat hereon delineated is a correct one and that permanent metal monuments consisting of bars not less than one-half inch in diameter and 48 inches in length, or shorter bars of not less than one-half inch in diameter lapped over each other at least 6 inches with an over-all length of not less than 48 inches, encased in a concrete cylinder at least 4 inches in diameter and 48 inches in depth have been placed at points marked thus (•••••) as thereon shown at all angles in the boundaries of the land platted, at all the intersections of streets, intersections of alleys, or of streets and alleys, and at the intersections of streets and alleys with the boundaries of the plat as shown on said plat.

Herbert Hicks
Registered Land Surveyor or Registered Professional Engineer
Herbert Hicks No. 1715

Signed and Sealed in the Presence of
Beulah J. Fuller (Witness) Raymond Barnard (L.S.)

Charles E. McDowell (Witness) Ethel Barnard (L.S.)

Eugene R. Young (L.S.)

Evelyn L. Young (L.S.)

John C. Johnson (L.S.)

Lucile Agnes Johnson (L.S.)

ACKNOWLEDGMENT

STATE OF MICHIGAN }
County of Washtenaw } ss.
On this 2nd day of November 1953, before me, a Notary Public in and for said County, personally came the above named Raymond Barnard, Ethel Barnard, Eugene R. Young, Evelyn L. Young, John C. Johnson and Lucile Agnes Johnson known to me to be the persons who executed the above dedication, and acknowledged the same to be their free act and deed.
Beulah J. Fuller
Notary Public, Washtenaw County
My Commission expires July 21, 1956

MUNICIPAL APPROVAL
This plat was approved by the Common Council of the City of Ann Arbor at a meeting held November 16, 1953
Fred J. Looker (Clerk)

MUNICIPAL APPROVAL
This plat was approved by the Board of Public Works of the City of Ann Arbor at a meeting held November 4, 1953
Fred J. Looker (Clerk)

COPY
Register's Office
Washtenaw County
Plat of Laurel Hills Subdivision
City of Ann Arbor
was Recorded this 27th day of November, A.D., 1953 at 12 o'clock P.M. in Liber 12 of Plate
on Page 1 and 2
Thomas A. FitzGerald
Register of Deeds
By P. N. Hardy Rep.

I hereby certify that this copy is a true copy of the map or plat forwarded the Register of Deeds for recording.
Date November 24, 1953
Filed in Auditor General's Dept.
Date December 17, 1953
Examined and Approved
Date November 24, 1953
Jay B. Martin
AUDITOR GENERAL
D. J. MacGregor
PLAT ENGINEER