



# CITY OF ANN ARBOR PROJECT MANAGEMENT

THE CONSTRUCTION COVERED BY THESE PLANS SHALL CONFORM TO THE CITY OF ANN ARBOR PUBLIC SERVICES DEPARTMENT STANDARD SPECIFICATIONS WHICH ARE INCLUDED BY REFERENCE.



## HURON PARKWAY SEGMENTAL BLOCK WALL REHABILITATION

CITY OF ANN ARBOR FILE NO. 2015-024  
ITB No. 4431

| REV. | DESCRIPTION               | DATE    | DRAWN | CHECKED |
|------|---------------------------|---------|-------|---------|
| 1    | HURON PARKWAY TITLE SHEET | 3/17/16 | VDC   | CEW     |

CITY OF ANN ARBOR  
PUBLIC SERVICE  
301 EAST HURON STREET  
ANN ARBOR, MI 48106-8647  
www.a2gov.org



PROJECT MANAGEMENT - PUBLIC SERVICES - CITY OF ANN ARBOR  
HURON PARKWAY SEGMENTAL BLOCK WALL REHABILITATION  
TITLE SHEET

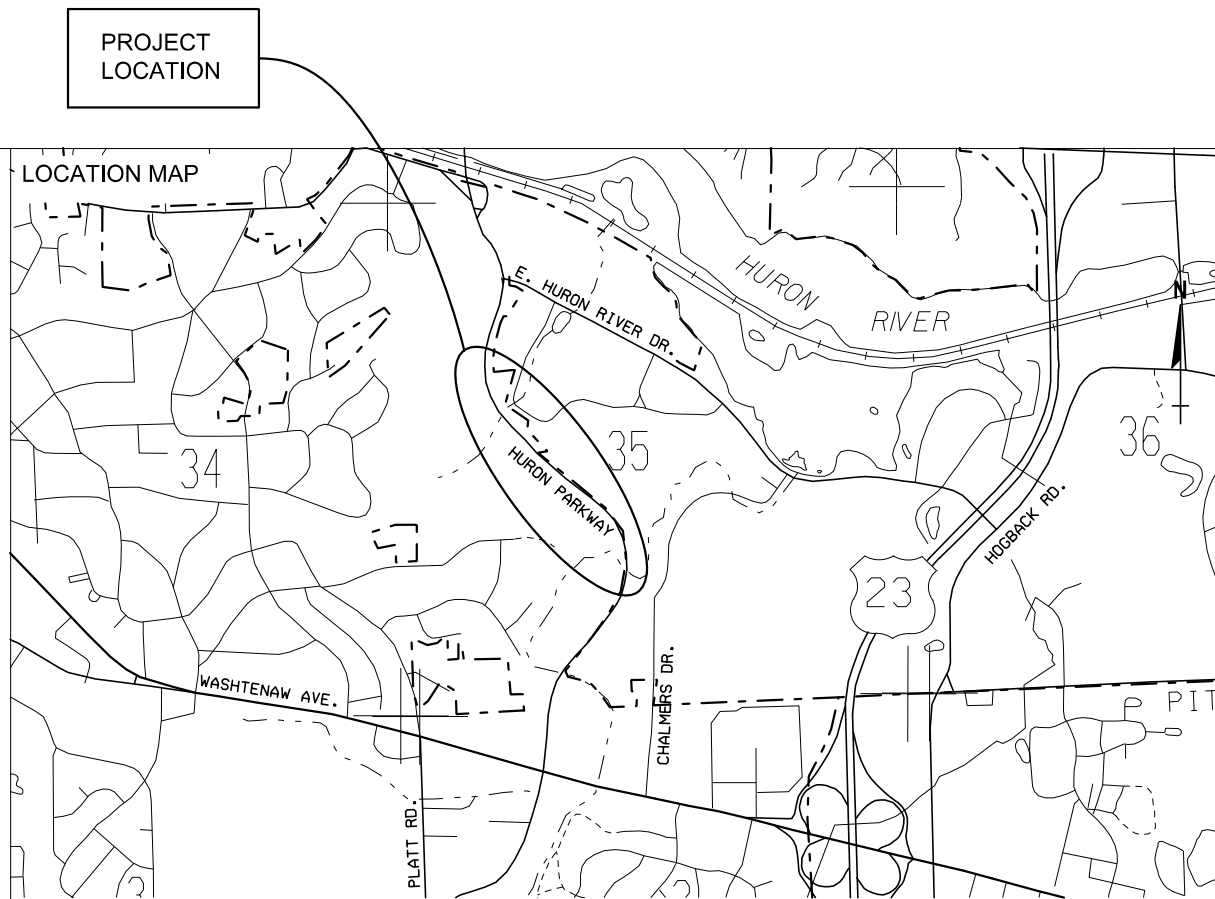
ENGINEER'S SEAL  
MICHAEL NEARING, P.E. - MI LICENSE No. 38748  
PROJECT ENGINEER

ENGINEER'S SEAL  
VINCENT GUADAGNI, P.E. - MI LICENSE No. 40036  
PROJECT MANAGER

SHEET No.  
1 OF 12

### SHEET INDEX

- 1 TITLE SHEET
- 2 NOTES AND LOCATION
- 3-8 MAINTENANCE OF TRAFFIC
- 9 WALL DETAILS
- 10-12 WALL ELEVATIONS



CONTRACT FOR:  
CLEAN, REMOVE EFFLORESCENCE FROM, AND SEAL SEGMENTAL BLOCK WALLS, AND REPLACE SELECTED CAP BLOCKS.



### PROJECT MANAGEMENT SERVICE UNIT

MICHAEL NEARING, P.E. - MI LICENSE No. 38748  
PROJECT ENGINEER

PREPARED UNDER THE SUPERVISION OF

VINCENT GUADAGNI, P.E. - MI LICENSE No. 40036  
PROJECT MANAGER

DATE

DATE

**GENERAL NOTES**

CAP BLOCKS SHOWN ON PLANS TO BE REMOVED AND REPLACED HAVE BEEN SELECTED BASED ON THEIR CURRENT CONDITION. ADDITIONAL BLOCKS MAY BE SELECTED FOR REMOVAL BY THE CONSTRUCTION ENGINEER DURING CONSTRUCTION. ADDITIONAL UNITS SHALL BE PAID FOR PER THE UNIT BID PRICE.

THE CONTRACTOR SHALL SELECT A CLEANING SOLUTION THAT IS EFFECTIVE IN REMOVING EFFLORESCENCE AND STAINING WITHOUT CONTAINING A MURIATIC ACID SOLUTION.

ALL VEGETATION AND NATURAL AREAS WITHIN THE WORK ZONE SHALL BE PROTECTED IN PLACE.

ALL SIDEWALKS, LAWNS AND ROADWAYS ADJACENT TO BLOCK WALLS SHALL BE LEFT FREE OF DEBRIS AFTER EACH DAY'S WORK.

ALL WORK TO CLEAN SURFACES AND REPLACE BLOCKS ON WALLS AB, CD, E AND F SHALL BE PERFORMED UNDER THE PROTECTION OF A SINGLE LANE CLOSURE.

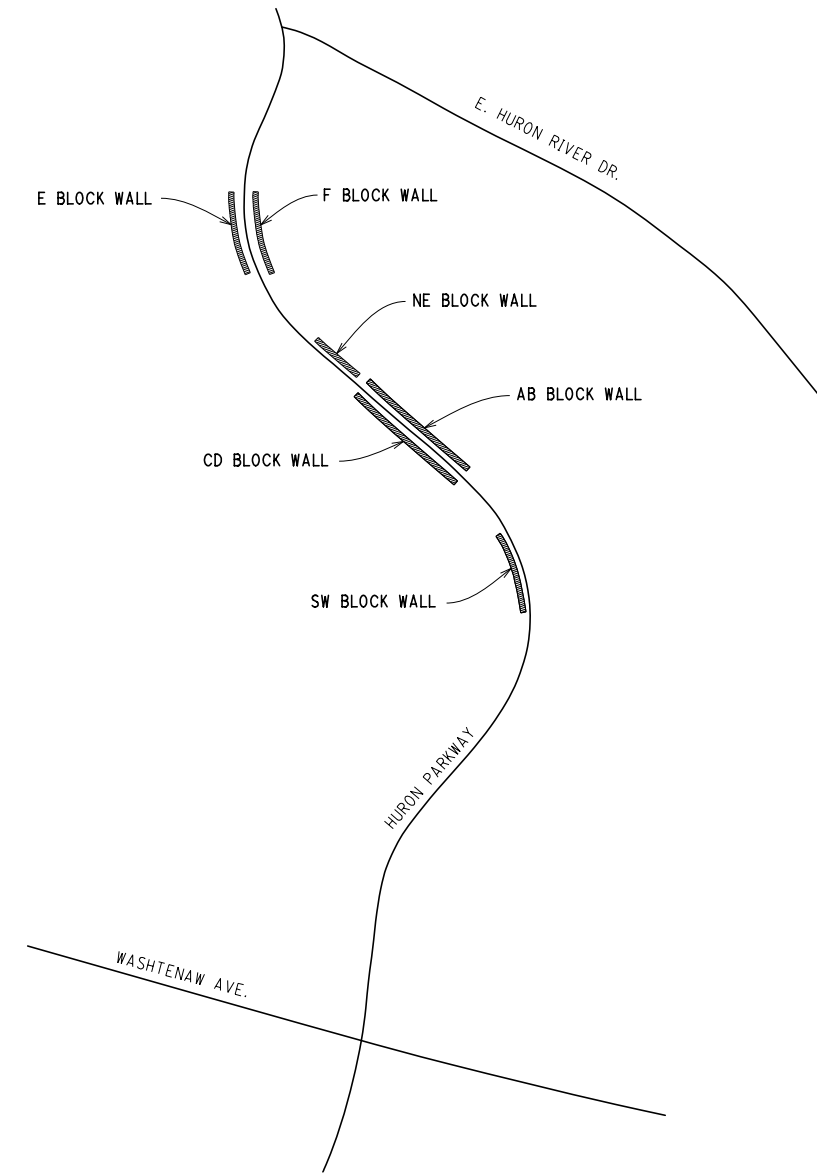
THE CONTRACTOR SHALL ONLY OPERATE THE LANE CLOSURE FROM 9:00 A.M. TO 4:00 P.M. MONDAY THROUGH FRIDAY.

**CONSTRUCTION QUANTITIES**

|      |      |   |
|------|------|---|
| 1    | LSUM | GENERAL CONDITIONS                                  |
| 1490 | FT   | SEGMENTAL BLOCK WALL CAP BLOCKS, REMOVE AND REPLACE |
| 50   | SFT  | SEGMENTAL BLOCK WALL PRE-CLEANING TEST SECTION      |
| 930  | SYD  | SEGMENTAL BLOCK WALL CLEANING                       |
| 1000 | SFT  | SEGMENTAL BLOCK WALL EFFLORESCENCE REMOVAL          |
| 930  | SYD  | SEGMENTAL BLOCK WALL SEALING                        |

**MAINTENANCE OF TRAFFIC QUANTITIES**

|     |      |  |
|-----|------|--|
| 1   | LSUM | MINOR TRAFFIC DEVICES  |
| 20  | EA   | BARRICADE, TYPE III, HIGH INTENSITY, DOUBLE SIDED, LIGHTED, FURN |
| 20  | EA   | BARRICADE, TYPE III, HIGH INTENSITY, DOUBLE SIDED, LIGHTED, OPER |
| 1   | EA   | LIGHTED ARROW, TYPE C, FURN                                      |
| 1   | EA   | LIGHTED ARROW, TYPE C, OPER                                      |
| 450 | FT   | PAVT MRKG, WET REFLECTICE TYPE R, TAPE, WHITE, TEMP              |
| 95  | EA   | CHANNELIZING DEVICE, 42 INCH, FURN                               |
| 95  | EA   | CHANNELIZING DEVICE, 42 INCH, OPER                               |
| 5   | EA   | SIGN COVER   |
| 427 | SFT  | SIGN, TYPE B, TEMP, PRISMATIC, FURN                              |
| 427 | SFT  | SIGN, TYPE B, TEMP, PRISMATIC, OPER                              |



**BLOCK WALL LOCATION MAP**  
ANN ARBOR, MI



|   |  |          |     |             |
|---|--|----------|-----|-------------|
| 1 | HURON PARKWAY NOTES AND LOCATION SHEET | 03/17/16 | NOG | CEN         |
|   |  |          |     | CHECKED     |
|   |  |          |     | DRAWN       |
|   |  |          |     | DATE        |
|   |  |          |     | REV.        |
|   |  |          |     | DESCRIPTION |

CITY OF ANN ARBOR  
PUBLIC SERVICES  
301 W. WASHINGTON STREET  
ANN ARBOR, MI 48101-4847  
www.a2gov.org

**PROJECT MANAGEMENT - PUBLIC SERVICES - CITY OF ANN ARBOR**

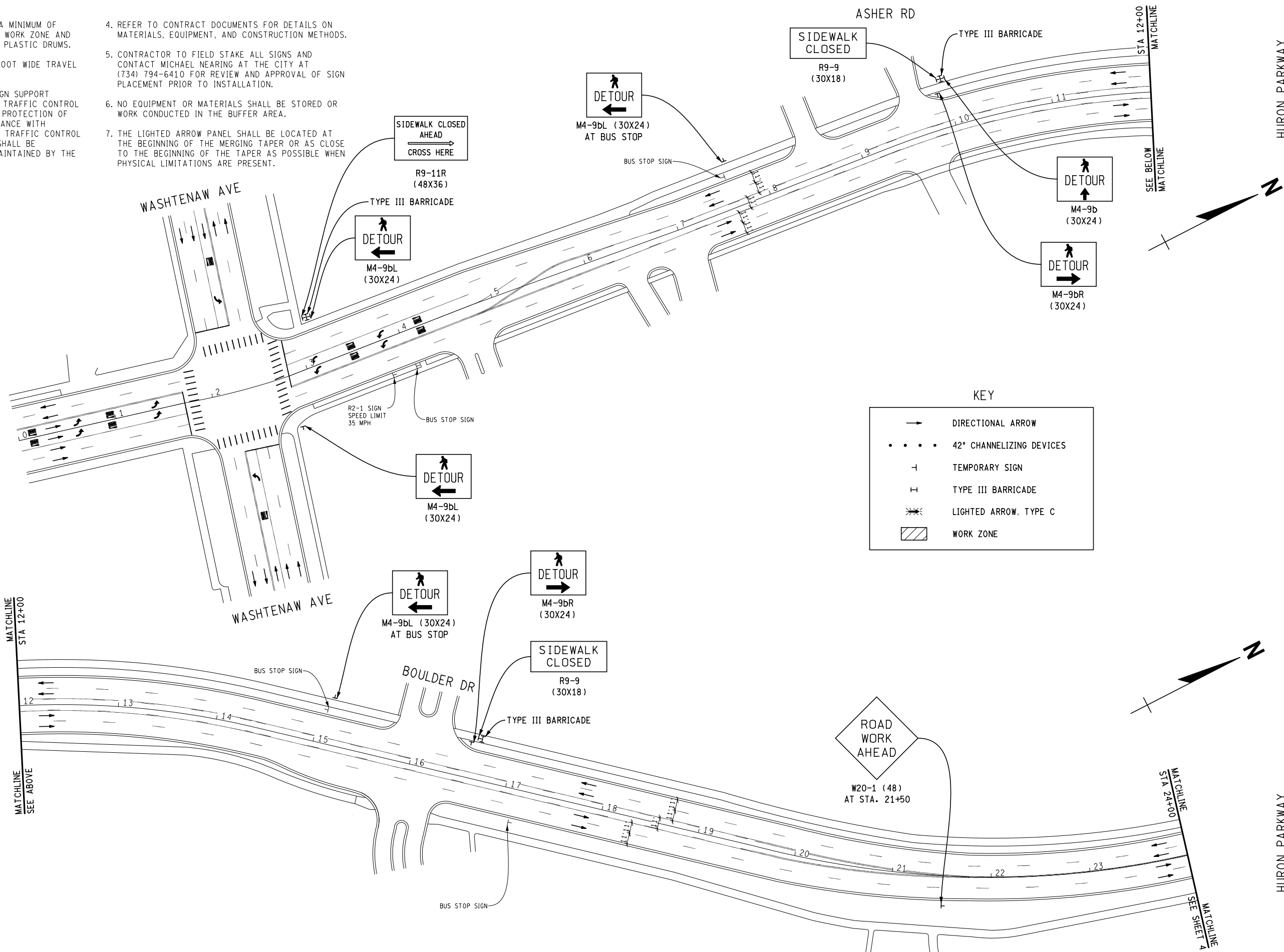
PROJECT DESCRIPTION  
**HURON PARKWAY SEGMENTAL BLOCK WALLS REHABILITATION**

NOTES AND LOCATION

DRAWING No. 2015024-C2

**NOTES:**

- CONTRACTOR SHALL PROVIDE A MINIMUM OF 3-FOOT SEPARATION BETWEEN WORK ZONE AND TRAVEL LANES TO ALLOW FOR PLASTIC DRUMS.
- MAINTAIN A MINIMUM OF 11-FOOT WIDE TRAVEL LANES.
- THE NECESSARY SIGNS AND SIGN SUPPORT STANDARDS, BARRICADES, AND TRAFFIC CONTROL DEVICES NECESSARY FOR THE PROTECTION OF TRAFFIC SHALL BE IN ACCORDANCE WITH MICHIGAN MANUAL ON UNIFORM TRAFFIC CONTROL DEVICES. ALL SUCH DEVICES SHALL BE FURNISHED, INSTALLED, AND MAINTAINED BY THE CONTRACTOR.
- REFER TO CONTRACT DOCUMENTS FOR DETAILS ON MATERIALS, EQUIPMENT, AND CONSTRUCTION METHODS.
- CONTRACTOR TO FIELD STAKE ALL SIGNS AND CONTACT MICHAEL NEARING AT THE CITY AT (734) 794-6410 FOR REVIEW AND APPROVAL OF SIGN PLACEMENT PRIOR TO INSTALLATION.
- NO EQUIPMENT OR MATERIALS SHALL BE STORED OR WORK CONDUCTED IN THE BUFFER AREA.
- THE LIGHTED ARROW PANEL SHALL BE LOCATED AT THE BEGINNING OF THE MERGING TAPER OR AS CLOSE TO THE BEGINNING OF THE TAPER AS POSSIBLE WHEN PHYSICAL LIMITATIONS ARE PRESENT.



|   |             |
|---|-------------|
|   |             |
| CEW   | CHECKED     |
| VCG   | DRAWN       |
| 03/17/16  | DATE        |
| HURON PARKWAY MAINTENANCE OF TRAFFIC  | DESCRIPTION |
| 1   | REV.        |
| CITY OF ANN ARBOR<br>PUBLIC SERVICES DEPARTMENT<br>300 EAST HURON STREET<br>ANN ARBOR, MI 48106-0687<br>www.a2gov.org   |             |
|   |             |
| <b>PROJECT MANAGEMENT - PUBLIC SERVICES - CITY OF ANN ARBOR</b><br><b>HURON PARKWAY SEGMENTAL BLOCK WALLS REHABILITATION</b><br><b>MAINTENANCE OF TRAFFIC</b> |             |
| DRAWING No. 2015024-MT1   |             |
| SHEET No. 3 OF 12   |             |

**MAINTENANCE OF TRAFFIC - STAGE 1**  
SCALE: 1" = 100'

Z:\2015\150773\CAD\CD\150772-3 Dwg Created: 02-10-16

HURON PARKWAY

HURON PARKWAY

HURON PARKWAY

HURON PARKWAY

Z:\2015\150773\CAD\CD\150772-4 Dwg Created: 02-10-16

HURON PARKWAY

HURON PARKWAY

WORK ZONE BEGINS

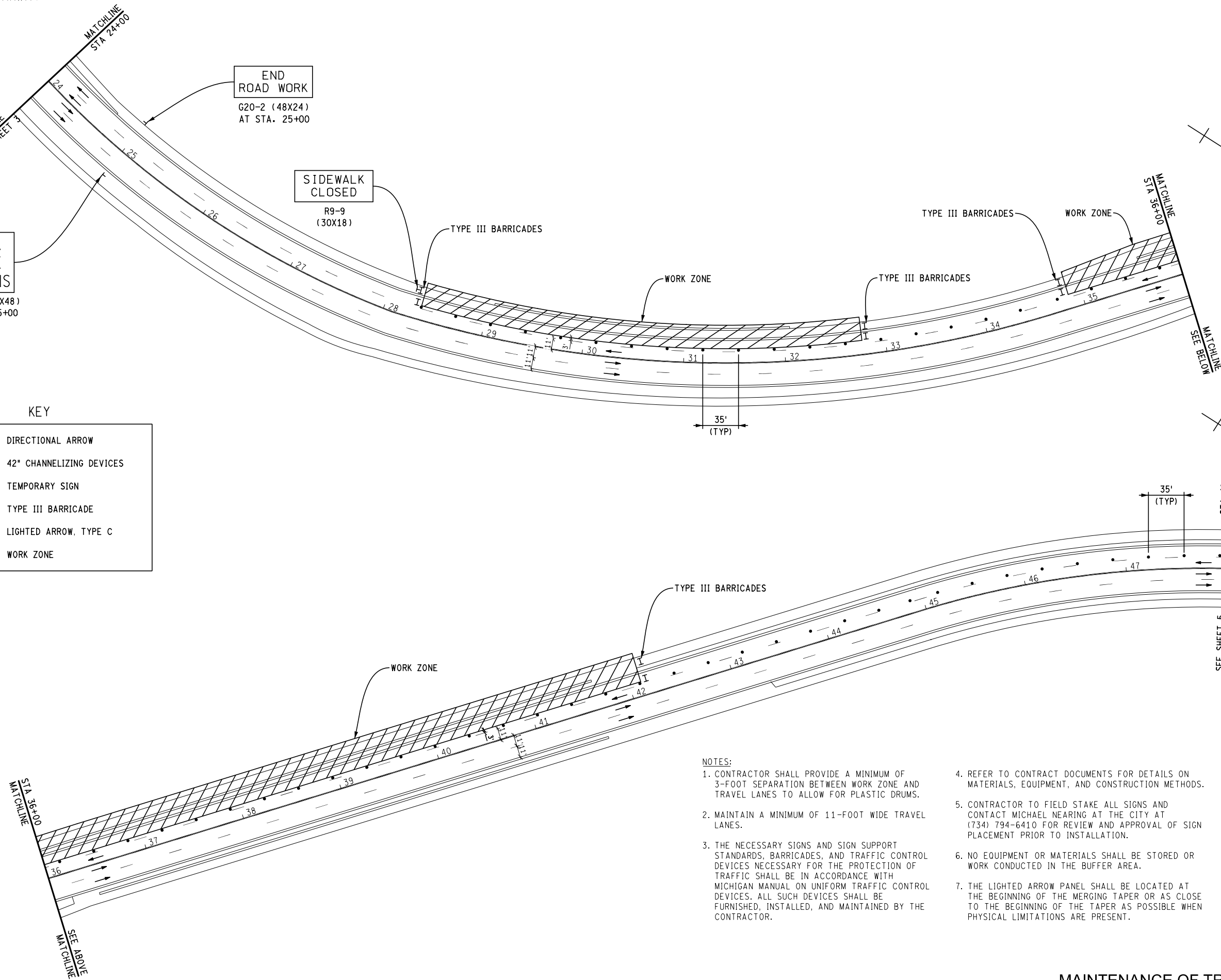
R5-18c (48X48)  
AT STA. 25+00

END ROAD WORK  
G20-2 (48X24)  
AT STA. 25+00

SIDEWALK CLOSED  
R9-9 (30X18)

KEY

|         |                          |
|---------|--------------------------|
| →       | DIRECTIONAL ARROW        |
| • • • • | 42" CHANNELIZING DEVICES |
| ⊥       | TEMPORARY SIGN           |
| ⊥       | TYPE III BARRICADE       |
| ⊥       | LIGHTED ARROW, TYPE C    |
| ▨       | WORK ZONE                |



NOTES:

- CONTRACTOR SHALL PROVIDE A MINIMUM OF 3-FOOT SEPARATION BETWEEN WORK ZONE AND TRAVEL LANES TO ALLOW FOR PLASTIC DRUMS.
- MAINTAIN A MINIMUM OF 11-FOOT WIDE TRAVEL LANES.
- THE NECESSARY SIGNS AND SIGN SUPPORT STANDARDS, BARRICADES, AND TRAFFIC CONTROL DEVICES NECESSARY FOR THE PROTECTION OF TRAFFIC SHALL BE IN ACCORDANCE WITH MICHIGAN MANUAL ON UNIFORM TRAFFIC CONTROL DEVICES. ALL SUCH DEVICES SHALL BE FURNISHED, INSTALLED, AND MAINTAINED BY THE CONTRACTOR.
- REFER TO CONTRACT DOCUMENTS FOR DETAILS ON MATERIALS, EQUIPMENT, AND CONSTRUCTION METHODS.
- CONTRACTOR TO FIELD STAKE ALL SIGNS AND CONTACT MICHAEL NEARING AT THE CITY AT (734) 794-6410 FOR REVIEW AND APPROVAL OF SIGN PLACEMENT PRIOR TO INSTALLATION.
- NO EQUIPMENT OR MATERIALS SHALL BE STORED OR WORK CONDUCTED IN THE BUFFER AREA.
- THE LIGHTED ARROW PANEL SHALL BE LOCATED AT THE BEGINNING OF THE MERGING TAPER OR AS CLOSE TO THE BEGINNING OF THE TAPER AS POSSIBLE WHEN PHYSICAL LIMITATIONS ARE PRESENT.

MAINTENANCE OF TRAFFIC - STAGE 1  
SCALE: 1" = 100'



|             |                                      |
|-------------|--------------------------------------|
| CEW         |                                      |
| VDC         |                                      |
| DATE        | 03/17/16                             |
| DESCRIPTION | HURON PARKWAY MAINTENANCE OF TRAFFIC |
| REV.        |                                      |
| DRAWN       |                                      |
| CHECKED     |                                      |

CITY OF ANN ARBOR  
301 EAST HURON STREET  
ANN ARBOR, MI 48106-0687  
www.a2gov.org

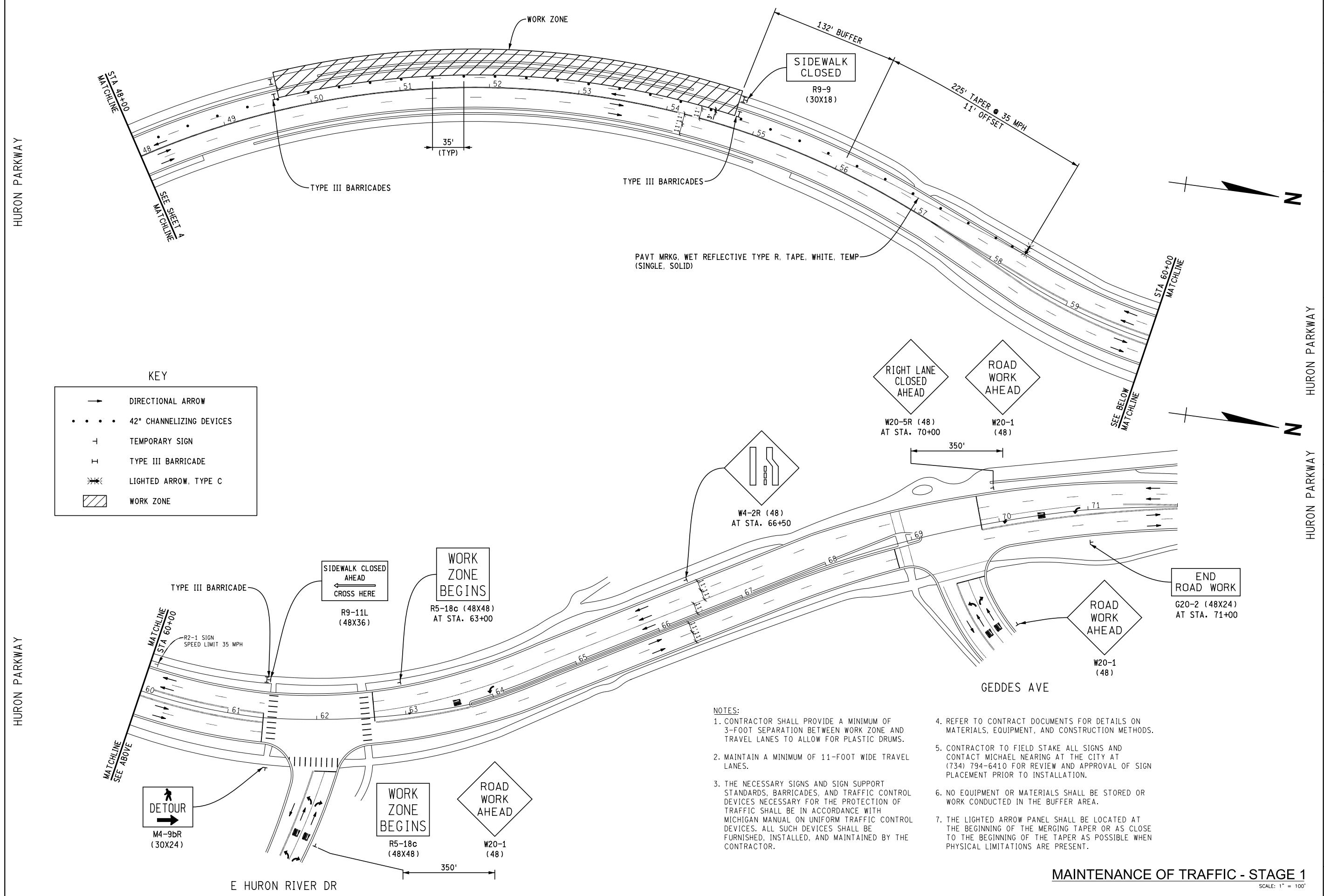
**PROJECT MANAGEMENT - PUBLIC SERVICES - CITY OF ANN ARBOR**

PROJECT DESCRIPTION  
**HURON PARKWAY SEGMENTAL BLOCK WALLS REHABILITATION**

MAINTENANCE OF TRAFFIC

DRAWING No. 2015024-MT2

Z:\2015\150773\CAD\CD\150772-5 Dwg Created: 02-10-16



**KEY**

- DIRECTIONAL ARROW
- • • • 42" CHANNELIZING DEVICES
- ⊥ TEMPORARY SIGN
- ⊥ TYPE III BARRICADE
- ⚡ LIGHTED ARROW, TYPE C
- ▨ WORK ZONE

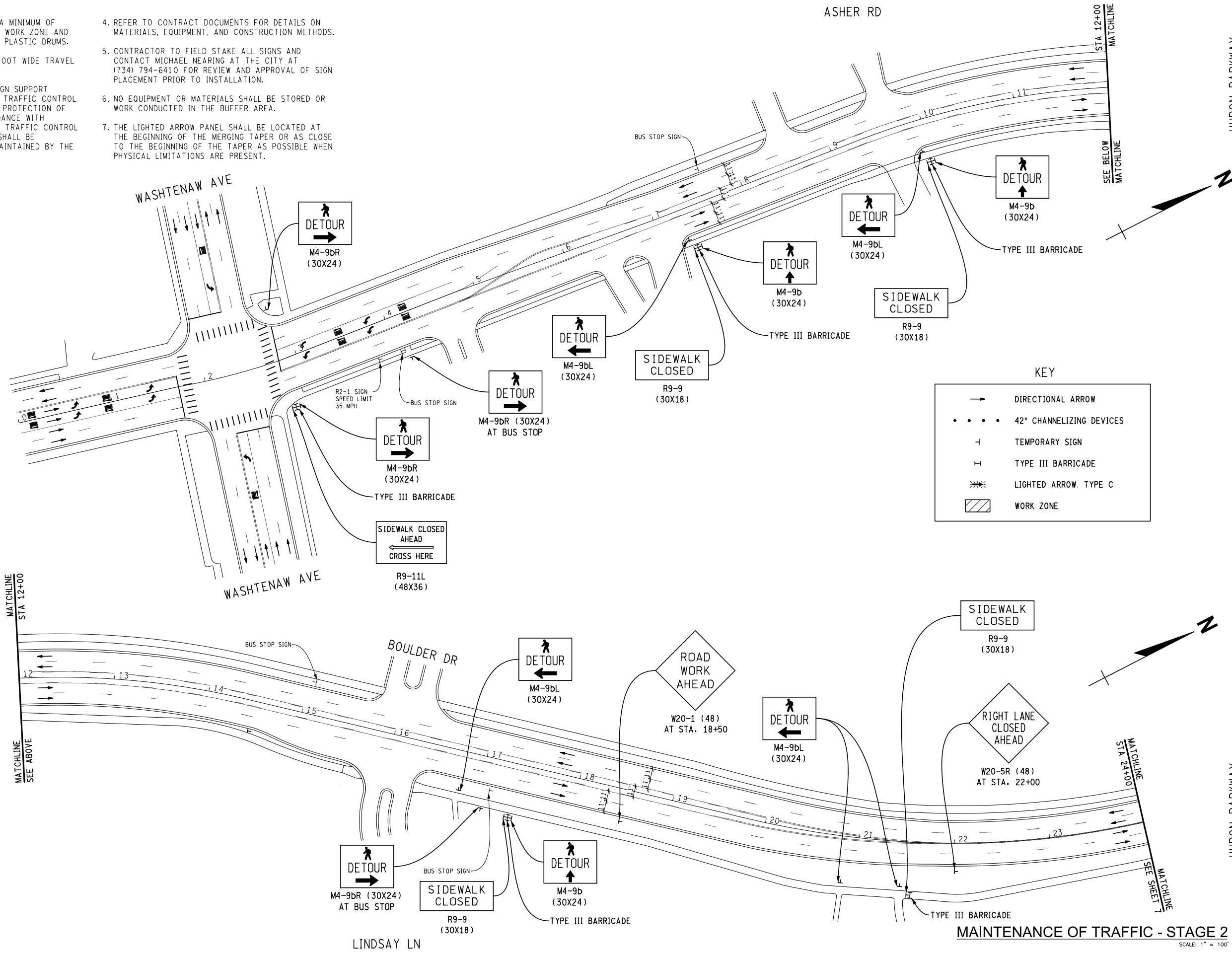
- NOTES:**
- CONTRACTOR SHALL PROVIDE A MINIMUM OF 3-FOOT SEPARATION BETWEEN WORK ZONE AND TRAVEL LANES TO ALLOW FOR PLASTIC DRUMS.
  - MAINTAIN A MINIMUM OF 11-FOOT WIDE TRAVEL LANES.
  - THE NECESSARY SIGNS AND SIGN SUPPORT STANDARDS, BARRICADES, AND TRAFFIC CONTROL DEVICES NECESSARY FOR THE PROTECTION OF TRAFFIC SHALL BE IN ACCORDANCE WITH MICHIGAN MANUAL ON UNIFORM TRAFFIC CONTROL DEVICES. ALL SUCH DEVICES SHALL BE FURNISHED, INSTALLED, AND MAINTAINED BY THE CONTRACTOR.
  - REFER TO CONTRACT DOCUMENTS FOR DETAILS ON MATERIALS, EQUIPMENT, AND CONSTRUCTION METHODS.
  - CONTRACTOR TO FIELD STAKE ALL SIGNS AND CONTACT MICHAEL NEARING AT THE CITY AT (734) 794-6410 FOR REVIEW AND APPROVAL OF SIGN PLACEMENT PRIOR TO INSTALLATION.
  - NO EQUIPMENT OR MATERIALS SHALL BE STORED OR WORK CONDUCTED IN THE BUFFER AREA.
  - THE LIGHTED ARROW PANEL SHALL BE LOCATED AT THE BEGINNING OF THE MERGING TAPER OR AS CLOSE TO THE BEGINNING OF THE TAPER AS POSSIBLE WHEN PHYSICAL LIMITATIONS ARE PRESENT.

**MAINTENANCE OF TRAFFIC - STAGE 1**  
SCALE: 1" = 100'

|  |                            |
|--|----------------------------|
|  |                            |
| PROJECT DESCRIPTION<br><b>HURON PARKWAY SEGMENTAL BLOCK WALLS REHABILITATION</b> | PROJECT NO.<br>2015024-MT3 |
| PROJECT MANAGEMENT - PUBLIC SERVICES - CITY OF ANN ARBOR                         | SHEET No.<br>5 OF 12       |
| HURON PARKWAY MAINTENANCE OF TRAFFIC   | DRAWING No.<br>2015024-MT3 |
| DATE<br>03/17/16   | CHECKED<br>[ ]             |
| DESCRIPTION<br>MAINTENANCE OF TRAFFIC  | DRAWN<br>[ ]               |
| REV.   | DATE                       |

- NOTES:**
- CONTRACTOR SHALL PROVIDE A MINIMUM OF 3-FOOT SEPARATION BETWEEN WORK ZONE AND TRAVEL LANES TO ALLOW FOR PLASTIC DRUMS.
  - MAINTAIN A MINIMUM OF 11-FOOT WIDE TRAVEL LANES.
  - THE NECESSARY SIGNS AND SIGN SUPPORT STANDARDS, BARRICADES, AND TRAFFIC CONTROL DEVICES NECESSARY FOR THE PROTECTION OF TRAFFIC SHALL BE IN ACCORDANCE WITH MICHIGAN MANUAL ON UNIFORM TRAFFIC CONTROL DEVICES. ALL SUCH DEVICES SHALL BE FURNISHED, INSTALLED, AND MAINTAINED BY THE CONTRACTOR.

- REFER TO CONTRACT DOCUMENTS FOR DETAILS ON MATERIALS, EQUIPMENT, AND CONSTRUCTION METHODS.
- CONTRACTOR TO FIELD STAKE ALL SIGNS AND CONTACT MICHAEL NEARING AT THE CITY AT (734) 794-6410 FOR REVIEW AND APPROVAL OF SIGN PLACEMENT PRIOR TO INSTALLATION.
- NO EQUIPMENT OR MATERIALS SHALL BE STORED OR WORK CONDUCTED IN THE BUFFER AREA.
- THE LIGHTED ARROW PANEL SHALL BE LOCATED AT THE BEGINNING OF THE MERGING TAPER OR AS CLOSE TO THE BEGINNING OF THE TAPER AS POSSIBLE WHEN PHYSICAL LIMITATIONS ARE PRESENT.



Z:\2015\150773\CAD\CD\150772-6 Dwg Created: 02-10-16

HURON PARKWAY

HURON PARKWAY

HURON PARKWAY

HURON PARKWAY

|     |     |          |      |             |
|-----|-----|----------|------|-------------|
| 811 | CEW | 03/17/16 | DATE | CHECKED     |
|     | VOC |          | DATE | DRAWN       |
|     |     |          | DATE | REV.        |
|     |     |          |      | DESCRIPTION |

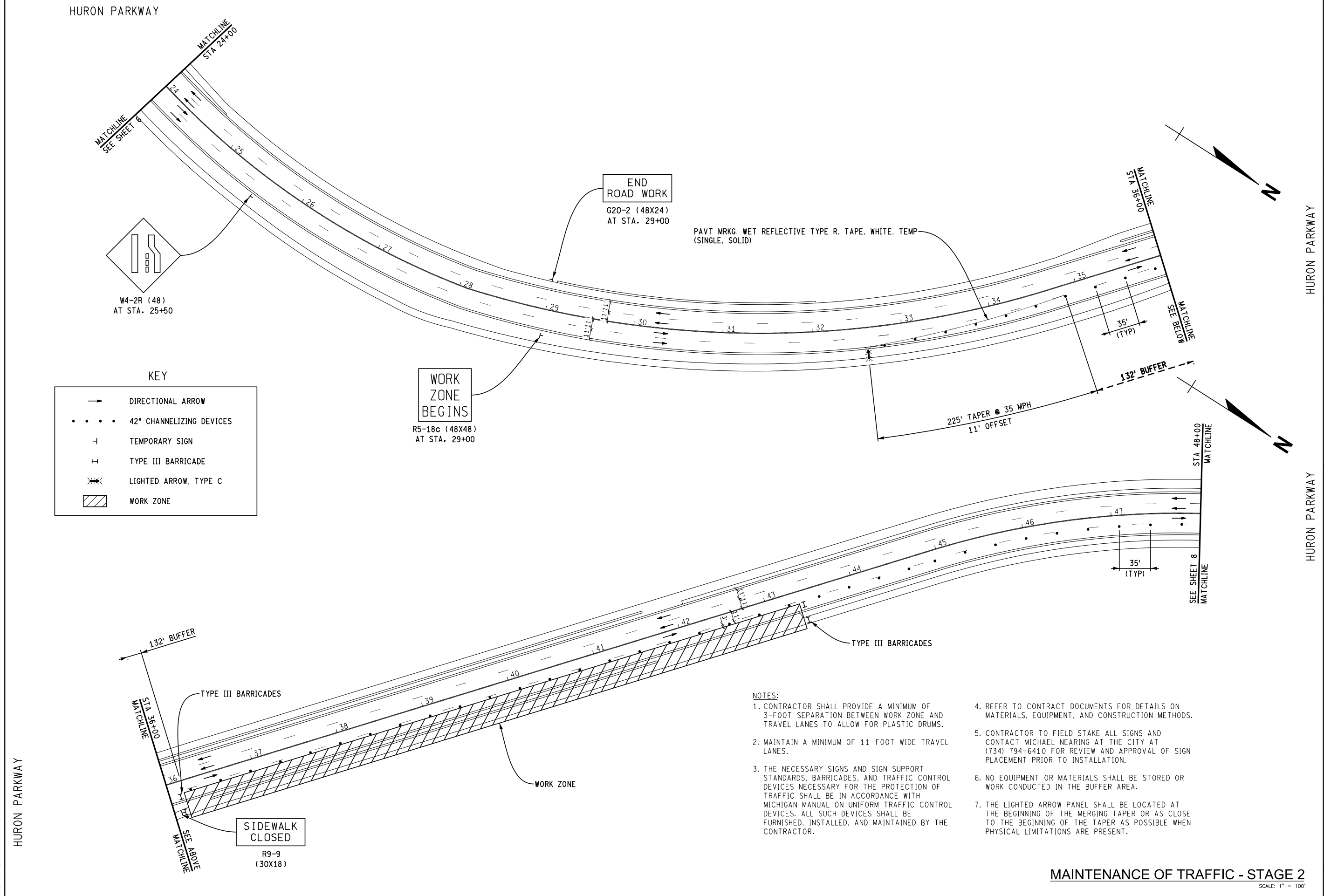
HURON PARKWAY MAINTENANCE OF TRAFFIC

CITY OF ANN ARBOR  
PUBLIC SERVICES  
301 W. WASHINGTON STREET  
ANN ARBOR, MI 48106-0487  
www.annarbor.org

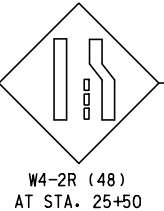
|                        |  |
|------------------------|--|
| PROJECT DESCRIPTION    | HURON PARKWAY SEGMENTAL BLOCK WALLS REHABILITATION |
| MAINTENANCE OF TRAFFIC |  |
| DRAWING No.            | 2015024-MT4  |
| SHEET No.              | 6 OF 12  |

MAINTENANCE OF TRAFFIC - STAGE 2  
SCALE: 1" = 100'

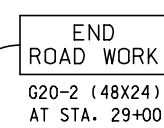
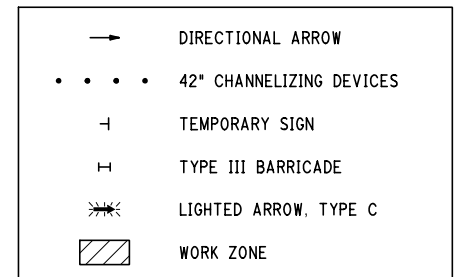
Z:\2015\150773\CAD\CD\150772-7 Dwg Created: 02-10-16



HURON PARKWAY  
MATCHLINE  
SEE SHEET 6  
MATCHLINE  
STA 24+00



KEY



PAVT MRKG. WET REFLECTIVE TYPE R, TAPE, WHITE, TEMP (SINGLE, SOLID)

225' TAPER @ 35 MPH  
11' OFFSET

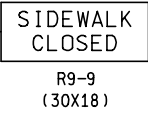
35' (TYP)

35' (TYP)

132' BUFFER

STA 36+00  
MATCHLINE  
SEE ABOVE  
MATCHLINE

TYPE III BARRICADES



WORK ZONE

TYPE III BARRICADES

STA 48+00  
MATCHLINE

SEE SHEET 8  
MATCHLINE

NOTES:

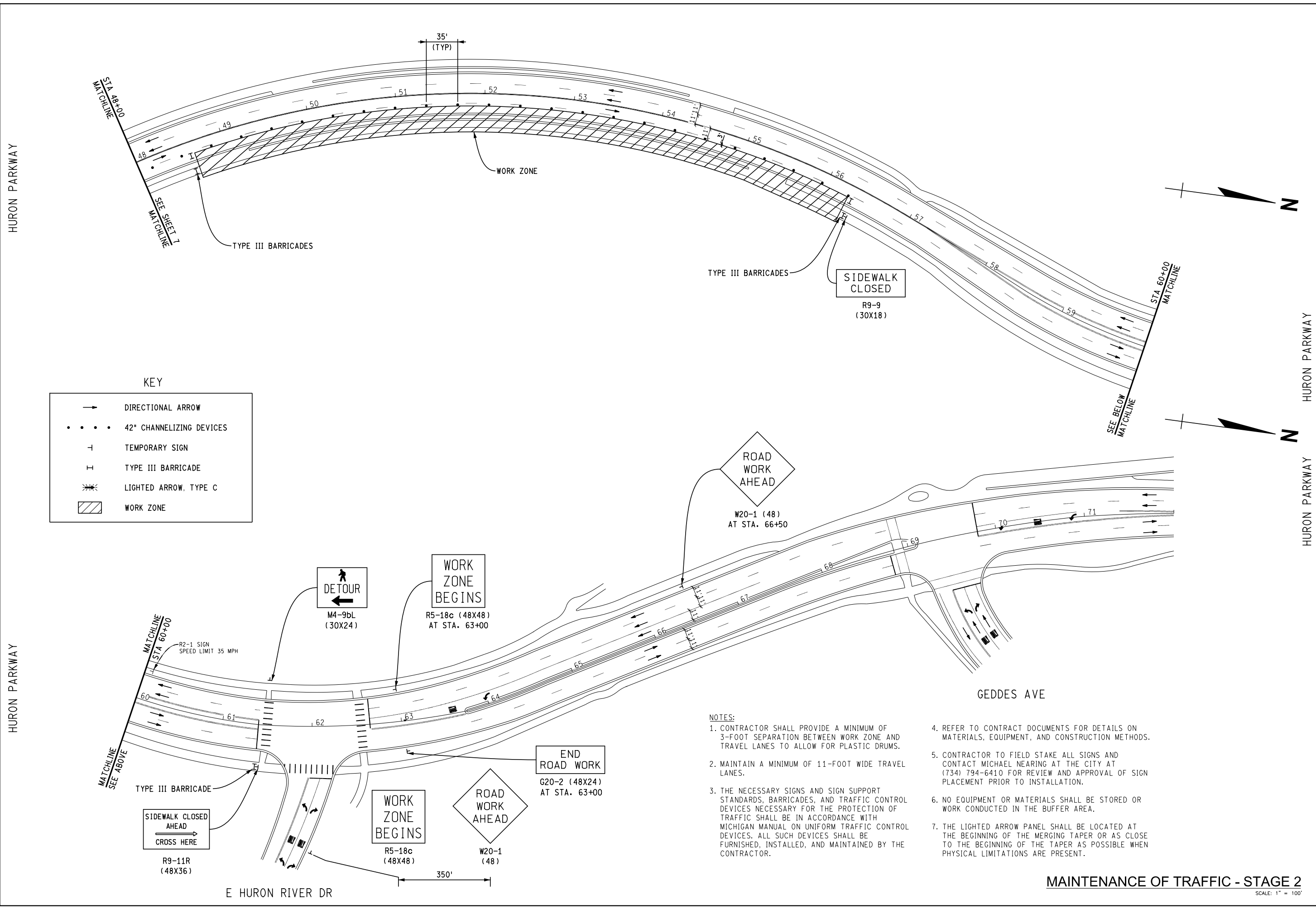
1. CONTRACTOR SHALL PROVIDE A MINIMUM OF 3-FOOT SEPARATION BETWEEN WORK ZONE AND TRAVEL LANES TO ALLOW FOR PLASTIC DRUMS.
2. MAINTAIN A MINIMUM OF 11-FOOT WIDE TRAVEL LANES.
3. THE NECESSARY SIGNS AND SIGN SUPPORT STANDARDS, BARRICADES, AND TRAFFIC CONTROL DEVICES NECESSARY FOR THE PROTECTION OF TRAFFIC SHALL BE IN ACCORDANCE WITH MICHIGAN MANUAL ON UNIFORM TRAFFIC CONTROL DEVICES. ALL SUCH DEVICES SHALL BE FURNISHED, INSTALLED, AND MAINTAINED BY THE CONTRACTOR.
4. REFER TO CONTRACT DOCUMENTS FOR DETAILS ON MATERIALS, EQUIPMENT, AND CONSTRUCTION METHODS.
5. CONTRACTOR TO FIELD STAKE ALL SIGNS AND CONTACT MICHAEL NEARING AT THE CITY AT (734) 794-6410 FOR REVIEW AND APPROVAL OF SIGN PLACEMENT PRIOR TO INSTALLATION.
6. NO EQUIPMENT OR MATERIALS SHALL BE STORED OR WORK CONDUCTED IN THE BUFFER AREA.
7. THE LIGHTED ARROW PANEL SHALL BE LOCATED AT THE BEGINNING OF THE MERGING TAPER OR AS CLOSE TO THE BEGINNING OF THE TAPER AS POSSIBLE WHEN PHYSICAL LIMITATIONS ARE PRESENT.

MAINTENANCE OF TRAFFIC - STAGE 2

SCALE: 1" = 100'

|  |                                    |
|--|------------------------------------|
|  |                                    |
| <p>HURON PARKWAY MAINTENANCE OF TRAFFIC</p>  | <p>03/17/16</p>                    |
| <p>1</p>   | <p>CEW</p>                         |
| <p>REV.</p>  | <p>DATE</p>                        |
| <p>DESCRIPTION</p>   | <p>DRAWN</p>                       |
| <p>CITY OF ANN ARBOR<br/>PUBLIC SERVICES<br/>301 S. MAIN STREET<br/>ANN ARBOR, MI 48106-0487<br/>www.a2gov.org</p> | <p>CHECKED</p>                     |
| <p>PROJECT DESCRIPTION<br/>HURON PARKWAY SEGMENTAL BLOCK WALLS REHABILITATION<br/>MAINTENANCE OF TRAFFIC</p>       | <p>DRAWING No.<br/>2015024-MT5</p> |
| <p>SHEET No.</p>   | <p>7 OF 12</p>                     |

Z:\2015\150773\CAD\CD\150772-8 Dwg Created: 02-10-16



**KEY**

|  |                          |
|--|--------------------------|
|  | DIRECTIONAL ARROW        |
|  | 42" CHANNELIZING DEVICES |
|  | TEMPORARY SIGN           |
|  | TYPE III BARRICADE       |
|  | LIGHTED ARROW, TYPE C    |
|  | WORK ZONE                |

- NOTES:**
- CONTRACTOR SHALL PROVIDE A MINIMUM OF 3-FOOT SEPARATION BETWEEN WORK ZONE AND TRAVEL LANES TO ALLOW FOR PLASTIC DRUMS.
  - MAINTAIN A MINIMUM OF 11-FOOT WIDE TRAVEL LANES.
  - THE NECESSARY SIGNS AND SIGN SUPPORT STANDARDS, BARRICADES, AND TRAFFIC CONTROL DEVICES NECESSARY FOR THE PROTECTION OF TRAFFIC SHALL BE IN ACCORDANCE WITH MICHIGAN MANUAL ON UNIFORM TRAFFIC CONTROL DEVICES. ALL SUCH DEVICES SHALL BE FURNISHED, INSTALLED, AND MAINTAINED BY THE CONTRACTOR.
  - REFER TO CONTRACT DOCUMENTS FOR DETAILS ON MATERIALS, EQUIPMENT, AND CONSTRUCTION METHODS.
  - CONTRACTOR TO FIELD STAKE ALL SIGNS AND CONTACT MICHAEL NEARING AT THE CITY AT (734) 794-6410 FOR REVIEW AND APPROVAL OF SIGN PLACEMENT PRIOR TO INSTALLATION.
  - NO EQUIPMENT OR MATERIALS SHALL BE STORED OR WORK CONDUCTED IN THE BUFFER AREA.
  - THE LIGHTED ARROW PANEL SHALL BE LOCATED AT THE BEGINNING OF THE MERGING TAPER OR AS CLOSE TO THE BEGINNING OF THE TAPER AS POSSIBLE WHEN PHYSICAL LIMITATIONS ARE PRESENT.

**MAINTENANCE OF TRAFFIC - STAGE 2**  
SCALE: 1" = 100'

**PROJECT MANAGEMENT - PUBLIC SERVICES - CITY OF ANN ARBOR**

**PROJECT DESCRIPTION**  
HURON PARKWAY SEGMENTAL BLOCK WALLS REHABILITATION

**MAINTENANCE OF TRAFFIC**

DRAWING No. 2015024-MT6

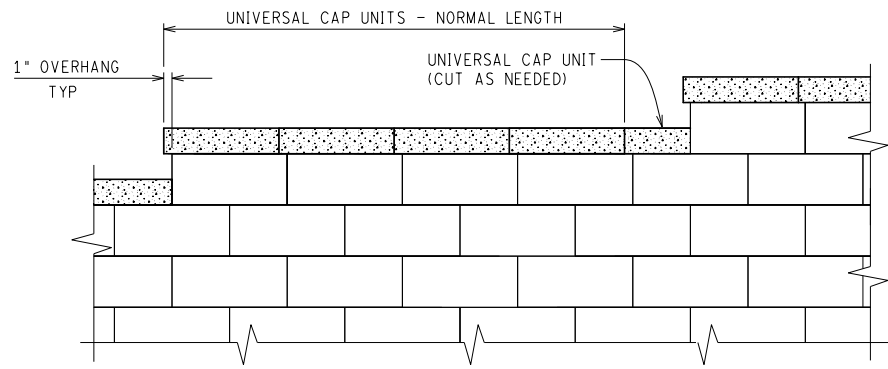
**811**  
Know what's below.  
Call before you dig.

| REV. | DESCRIPTION | DATE     | DRAWN | CHECKED |
|------|-------------|----------|-------|---------|
| 1    |             | 03/17/16 | VOC   | CEW     |

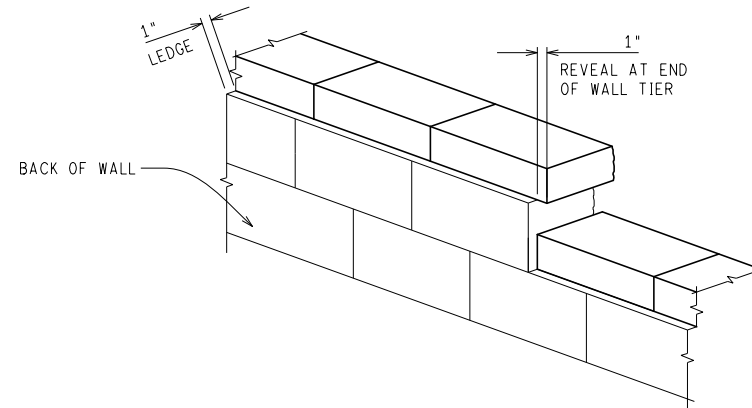
CITY OF ANN ARBOR  
100 EAST HURON STREET  
ANN ARBOR, MI 48106  
www.annarbor.org



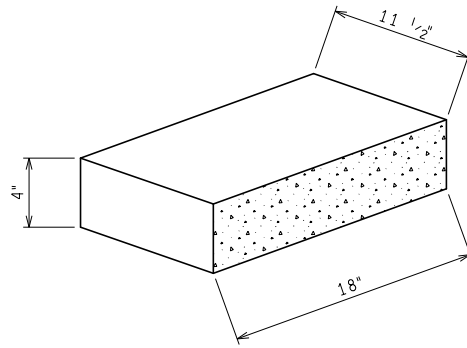
NOTE: THOROUGHLY CLEAN AND REMOVE ALL LOOSE MATERIAL, OLD ADHESIVE, AND ANY OTHER DELETERIOUS MATERIALS FROM TOP OF EXISTING SEGMENTAL BLOCKS PRIOR TO PLACING NEW CAP BLOCKS. ENGINEER TO APPROVE CONDITIONS PRIOR TO PLACING ADHESIVE.



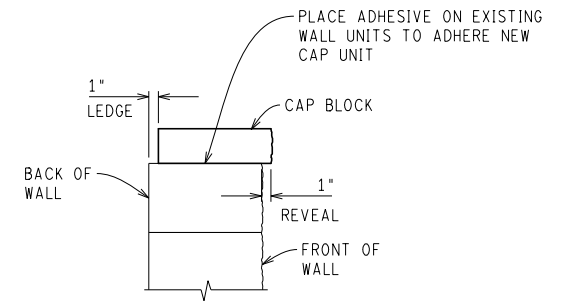
TYPICAL WALL TIER ELEVATION



ISO WALL SECTION

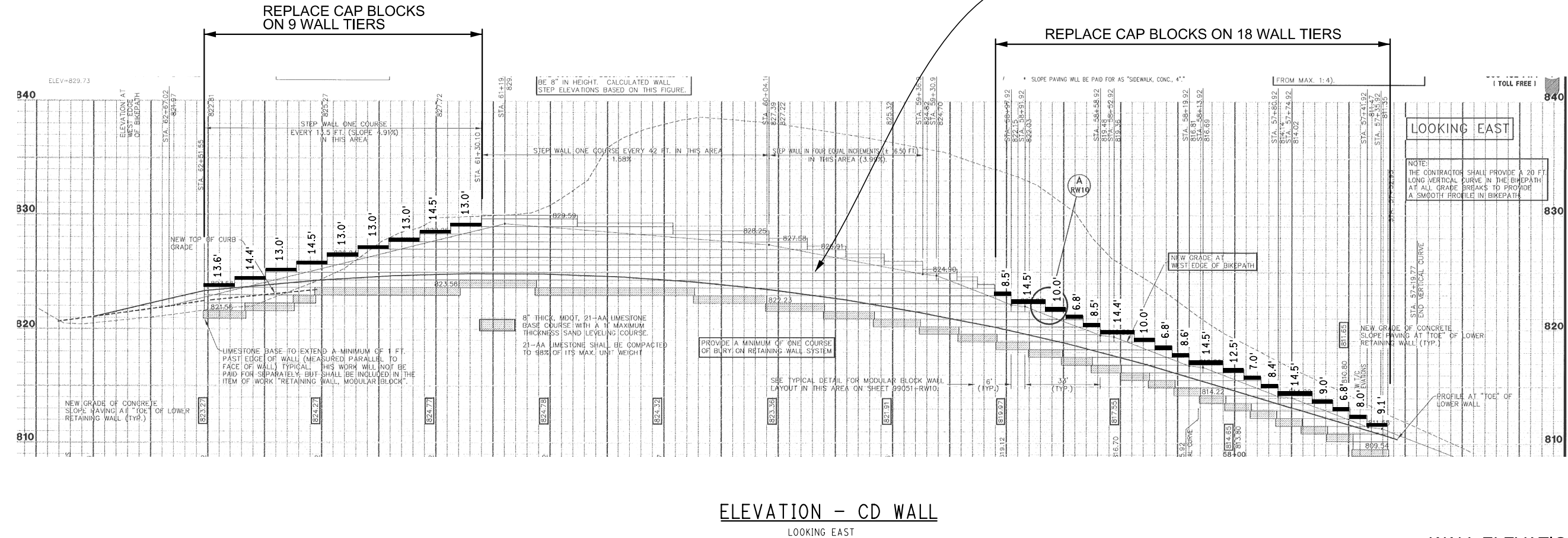
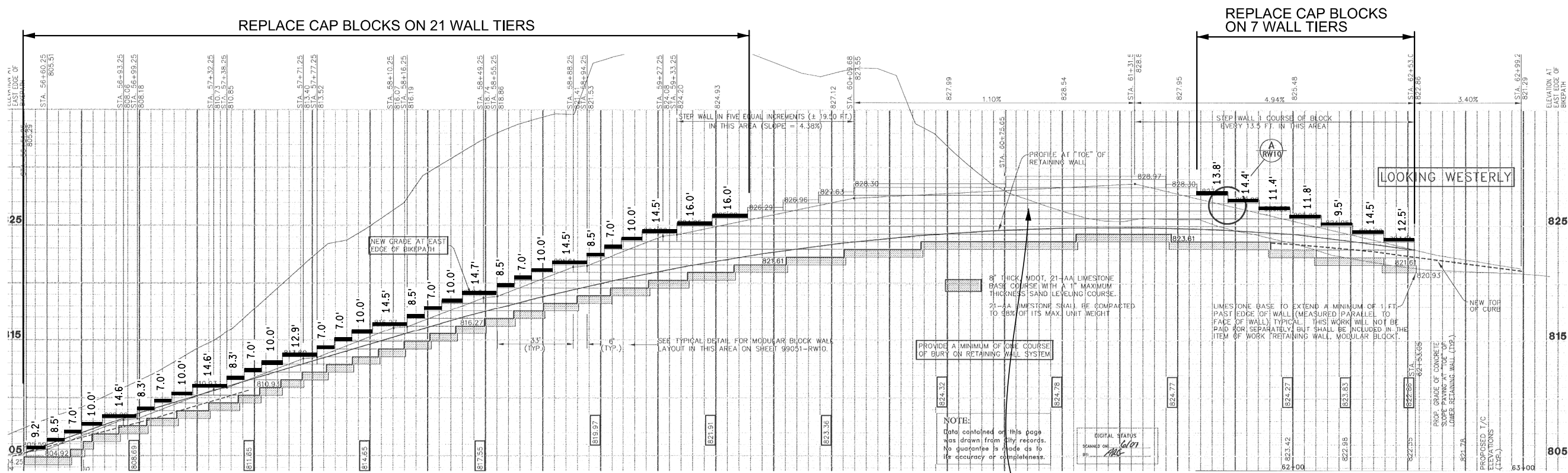


TYPICAL UNIVERSAL CAP UNIT



SECTION THRU WALL

WALL DETAILS  
NO SCALE



THE ENGINEER AND CONTRACTOR SHALL INSPECT AND AGREE UPON AREAS OF EFFLORESCENCE REMOVAL PRIOR TO COMMENCING WORK.

**811** Know what's below. Call before you dig.

| REV. | DATE     | DESCRIPTION                   | DRAWN | CHECKED |
|------|----------|-------------------------------|-------|---------|
| 1    | 03/17/16 | HURON PARKWAY WALL ELEVATIONS |       |         |

PROJECT DESCRIPTION: HURON PARKWAY SEGMENTAL BLOCK WALLS REHABILITATION WALL ELEVATIONS

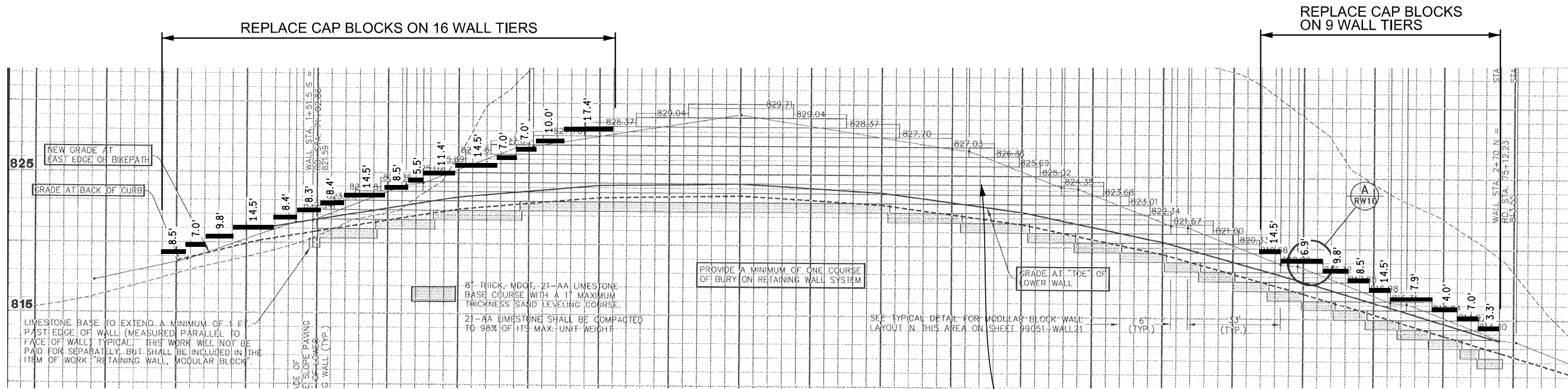
DRAWING No. 2015024-W2

SHEET No. 10 OF 12

PROJECT MANAGEMENT - PUBLIC SERVICES - CITY OF ANN ARBOR

CITY OF ANN ARBOR PUBLIC SERVICES 301 W. MAIN STREET ANN ARBOR, MI 48106-0487 www.annarbor.org

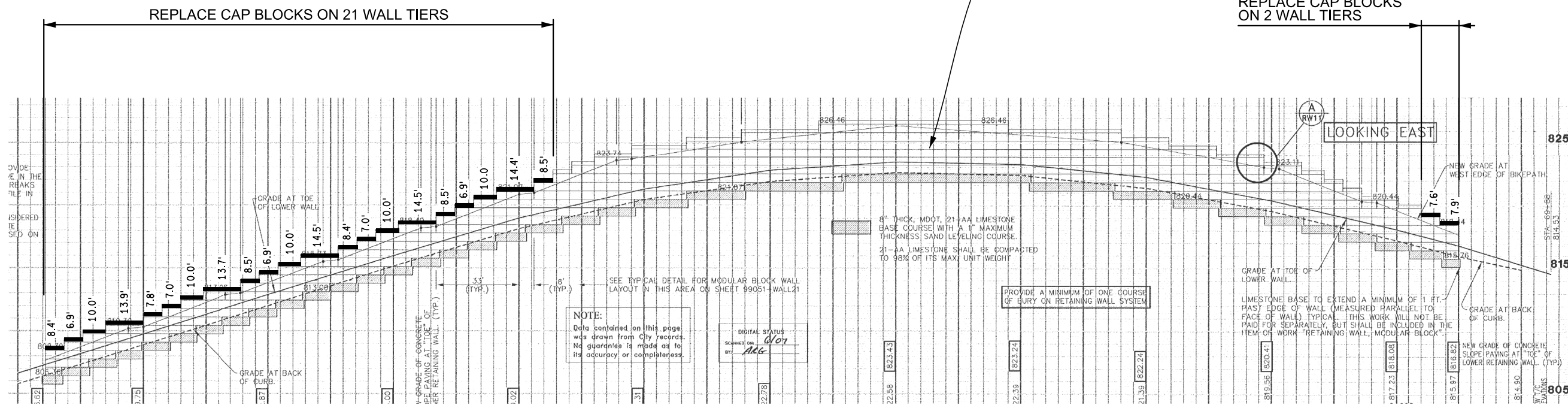
Z:\2015\150773\CA0\00\150772-11 Dwg Created: 02-10-16



**ELEVATION - E WALL**

LOOKING WEST


THE ENGINEER AND CONTRACTOR SHALL INSPECT AND AGREE UPON AREAS OF EFFLORESCENCE REMOVAL PRIOR TO COMMENCING WORK.



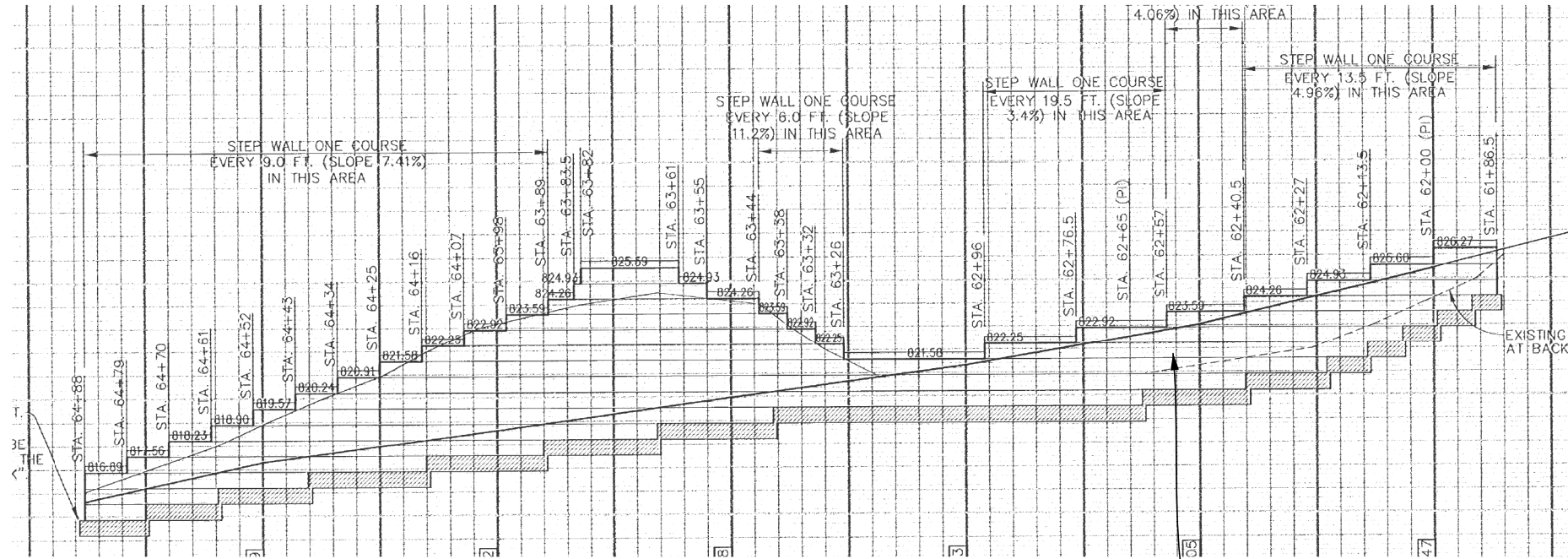
**ELEVATION - F WALL**

LOOKING EAST

**WALL ELEVATIONS**  
NO SCALE

|  |                                     |
|--|-------------------------------------|
| <br>CITY OF ANN ARBOR<br>PUBLIC SERVICES<br>301 W. WOOD STREET<br>ANN ARBOR, MI 48106-0487<br>www.a2gov.org |                                     |
| PROJECT DESCRIPTION<br><b>HURON PARKWAY SEGMENTAL BLOCK WALLS REHABILITATION</b>   | SHEET No.<br><b>2015024-W3</b>      |
| PROJECT DESCRIPTION<br><b>HURON PARKWAY WALL ELEVATIONS</b>  | SHEET No.<br><b>11 OF 12</b>        |
| 1 HURON PARKWAY WALL ELEVATIONS 03/17/16 VDC CEW   | REV. DESCRIPTION DATE DRAWN CHECKED |

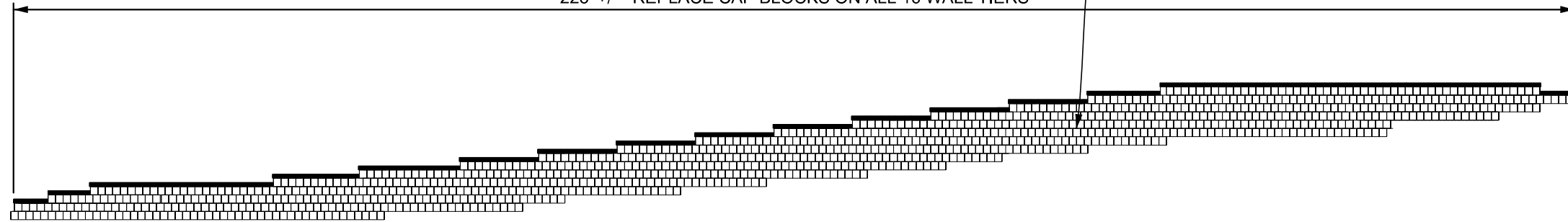
NO CAP BLOCK REPLACEMENTS - THIS WALL ONLY



**ELEVATION - NE WALL**  
LOOKING EASTERLY

THE ENGINEER AND CONTRACTOR SHALL INSPECT AND AGREE UPON AREAS OF EFFLORESCENCE REMOVAL PRIOR TO COMMENCING WORK.

225' +/- REPLACE CAP BLOCKS ON ALL 16 WALL TIERS



**ELEVATION - SW WALL**  
LOOKING WESTERLY

**WALL ELEVATIONS**  
NO SCALE

**PROJECT MANAGEMENT - PUBLIC SERVICES - CITY OF ANN ARBOR**  
PROJECT DESCRIPTION  
**HURON PARKWAY SEGMENTAL BLOCK WALLS REHABILITATION WALL ELEVATIONS**

DRAWING No.  
2015024-W4

SHEET No.

12 OF 12



CITY OF ANN ARBOR  
PUBLIC SERVICE  
301 W. WOOD STREET  
ANN ARBOR, MI 48101-4647  
www.a2gov.org

| REV. | DESCRIPTION                   | DATE     | DRAWN | CHECKED |
|------|-------------------------------|----------|-------|---------|
| 1    | HURON PARKWAY WALL ELEVATIONS | 03/17/16 | VOC   | CEW     |

