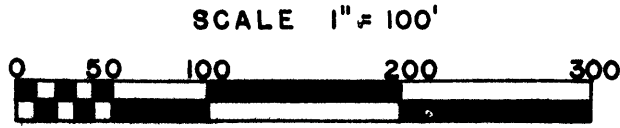


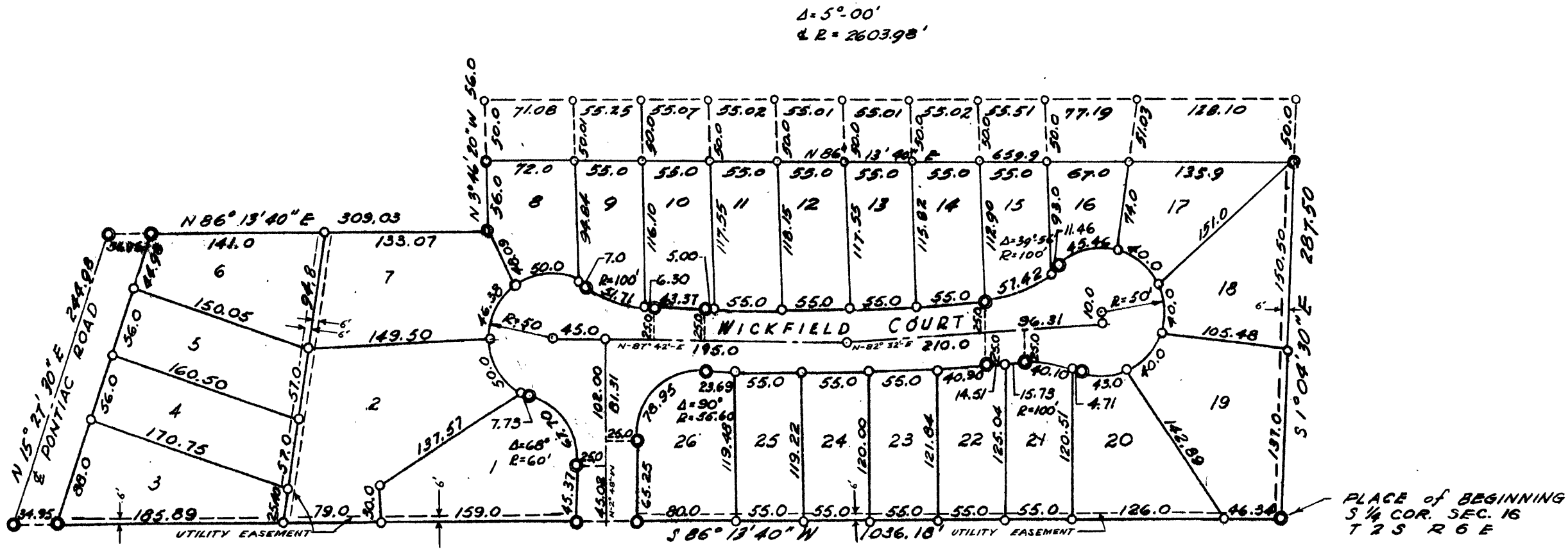
FM
12-26-52

ORIGINAL
STARWICK HEIGHTS NUMBER TWO

A SUBDIVISION OF
PART OF THE SOUTHWEST 1/4 OF
SECTION 16, TOWN 2 SOUTH,
RANGE 6 EAST, CITY OF ANN ARBOR
WASHTENAW COUNTY, MICHIGAN.
ALL DIMENSIONS IN FEET AND DECIMALS
THEREOF.
ALL CURVE DISTANCES ARE CHORDS.



SURVEY BY
ATWELL - HICKS, INC.



DEDICATION

KNOW ALL MEN BY THESE PRESENTS, that we, I, Neil O. Staebler
doing business under the assumed name of
Staebler and Son
as proprietors, have caused the land embraced in the annexed plat to be surveyed,
laid out and platted, to be known as, STARWICK HEIGHTS NUMBER
TWO, a subdivision of part of the Southwest 1/4 of
Section 16, Town 2 South, Range 6 East, City of Ann
Arbor, Washtenaw County, Michigan
and that the court and road as shown on said plat are
hereby dedicated to the use of the public.

Signed and Sealed in
the Presence of:
Eleanor Kilpatrick (Witness) Neil O. Staebler (L.S.)
Kenneth Heining (Witness) (L.S.)

ACKNOWLEDGMENT

STATE OF MICHIGAN }
County of ..Washtenaw... } ss.
On this twenty-sixth day of November, 1952, before me,
a Notary Public in and for said County, personally came the above named
Neil O. Staebler
known to me to be the persons who executed the above dedication, and acknowledged
the same to be their free act and deed.
Eleanor Kilpatrick
Notary Public, Washtenaw County
My Commission expires March 28, 1956

DESCRIPTION OF LAND PLATTED

The land embraced in the annexed plat of STARWICK HEIGHTS
NUMBER TWO; a Subdivision of part of the Southwest
1/4 of Section 16, Town 2 South, Range 6 East, City of
Ann Arbor, Washtenaw County, Michigan
is described as follows:

Beginning at the S 1/4 corner of Section 16, T 2 S.,
R 6 E., City of Ann Arbor, Washtenaw County, Michigan,
thence South 86° 13' 40" West 1036.18 feet along the
South line of the Section, thence North 15° 27' 30" East
244.98 feet along the center line of Pontiac Road, thence
North 86° 13' 40" East 309.03 feet, thence North 3° 46'
20" West 56.0 feet, thence North 86° 13' 40" East, 659.90
feet, thence South 1° 04' 30" East 287.50 feet along the
N.S. 1/4 line to the point of Beginning.

MUNICIPAL APPROVAL

This plat was approved by the Common Council
of the City of Ann Arbor
at a meeting held December 15, 1952
Fred J. Looker (Clerk)

COUNTY TREASURER'S CERTIFICATE

Office of County Treasurer, Washtenaw County.
I hereby certify, that there are no tax liens or titles held by the State on the lands de-
scribed hereon, and that there are no tax liens or titles held by individuals on said lands,
for the five years preceding the 20th day of
December, 1952 and that the taxes for said period of
five years are all paid, as shown by the records of this office
This certificate does not apply to taxes, if any, now in process of collection by township,
city or village collecting officers.

W. F. Verner (County Treasurer)

COPY

register's Office
Washtenaw County, ss.
Plat of Starwick Heights Number
Two, City of Ann Arbor
was Recorded this 31st day of
December A.D., 1952 at 10:30 o'clock
A.M. in Liber 11 of Plats
Page 50
Thomas A. FitzGerald
Register of Deeds
ORIGINAL ON FILE

Examined and Approved

December 26, 1952
Mayme Jewell Purdy
Deputy Auditor General
Mayme Jewell Purdy

FILED IN AUDITOR GENERAL'S DEPT.

January 5, 1953
Mayme Jewell Purdy
Deputy Auditor General
Mayme Jewell Purdy

APPROVAL BY COUNTY PLAT BOARD

This plat was approved on the 22nd day of
December, 1952, by the
Washtenaw County Plat Board

Thomas A. FitzGerald (County Register of Deeds)
J. Martin Rempop
Adolph F. Gross
Herbert G. Loeffler

APPROVAL BY THE CITY PLANNING COMMISSION

This plat was approved by the Planning Commission of the
City of Ann Arbor at a meeting held on the 25th day of
NOV. 1952.

Fredrick M. McOmber (Chairman)
William C. Waltz (Secretary)

MUNICIPAL APPROVAL

This plat was approved by the Board of Public Works of the
City of Ann Arbor at a meeting held the 7th day of
December 1952.

Fred J. Looker (Clerk)

SURVEYOR'S CERTIFICATE

I hereby certify that the plat hereon delineated is a correct one, and that permanent
monuments consisting of iron rods at least one half inch in diameter and 48 inches in
length, encased in concrete cylinders four inches in diameter and 48 inches in length,
have been set at points marked thus (C) as thereon shown at all angles in the bound-
aries of the land platted, at all intersections of the lines of streets and at intersections
of the lines of streets with the boundaries of the plat.

Herbert S. Hicks
No. 1715
Registered Land Surveyor

I HEREBY CERTIFY THAT THIS COPY IS
A TRUE COPY OF THE MAP OR PLAT
FORWARDED TO THE REGISTER OF DEEDS
FOR RECORDING.

December 26, 1952
Mayme Jewell Purdy
Deputy Auditor General
Mayme Jewell Purdy