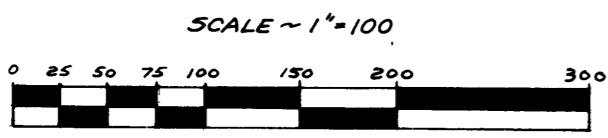
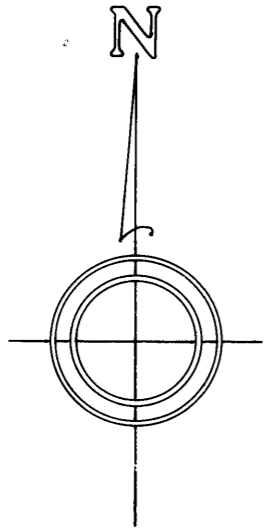


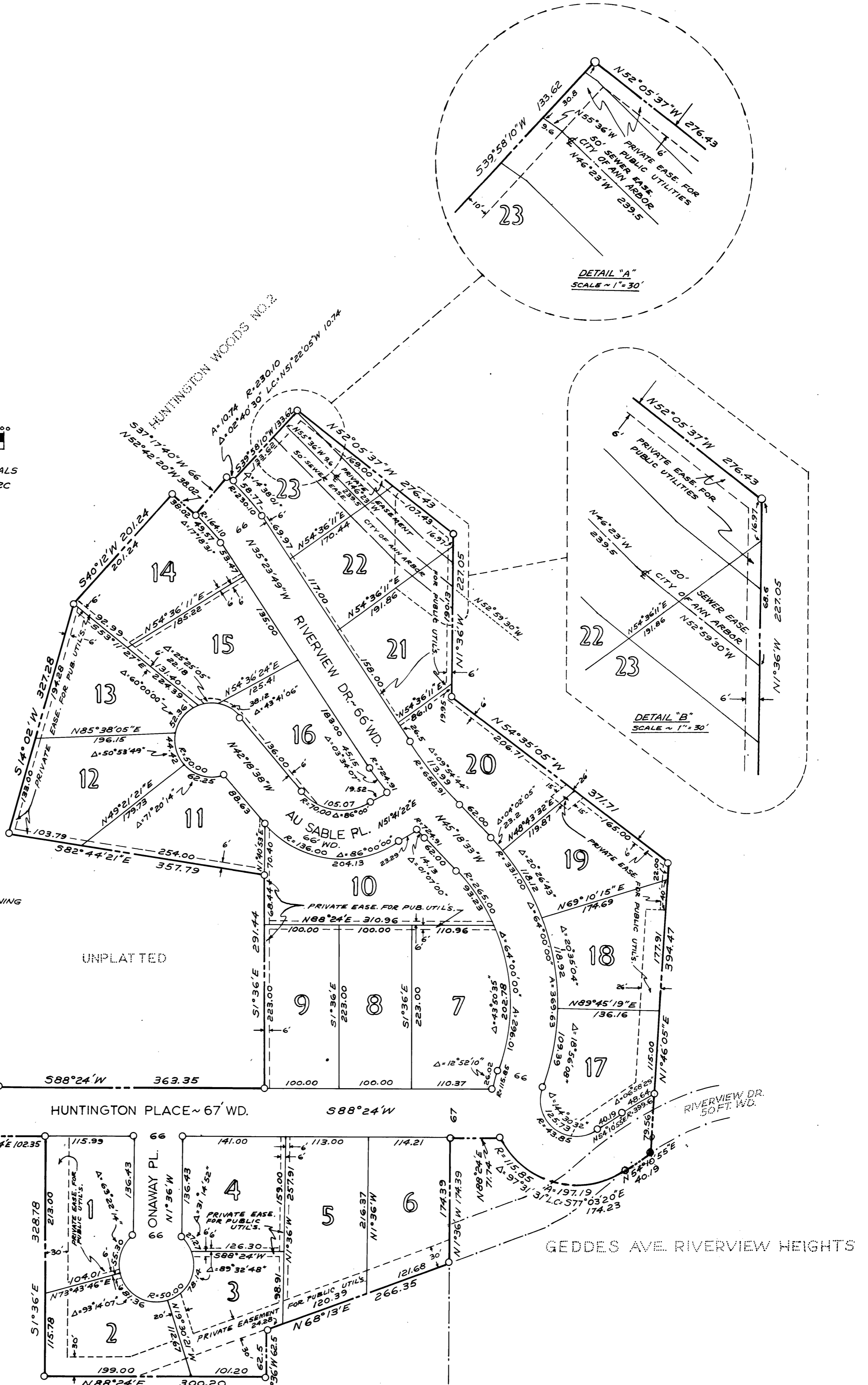
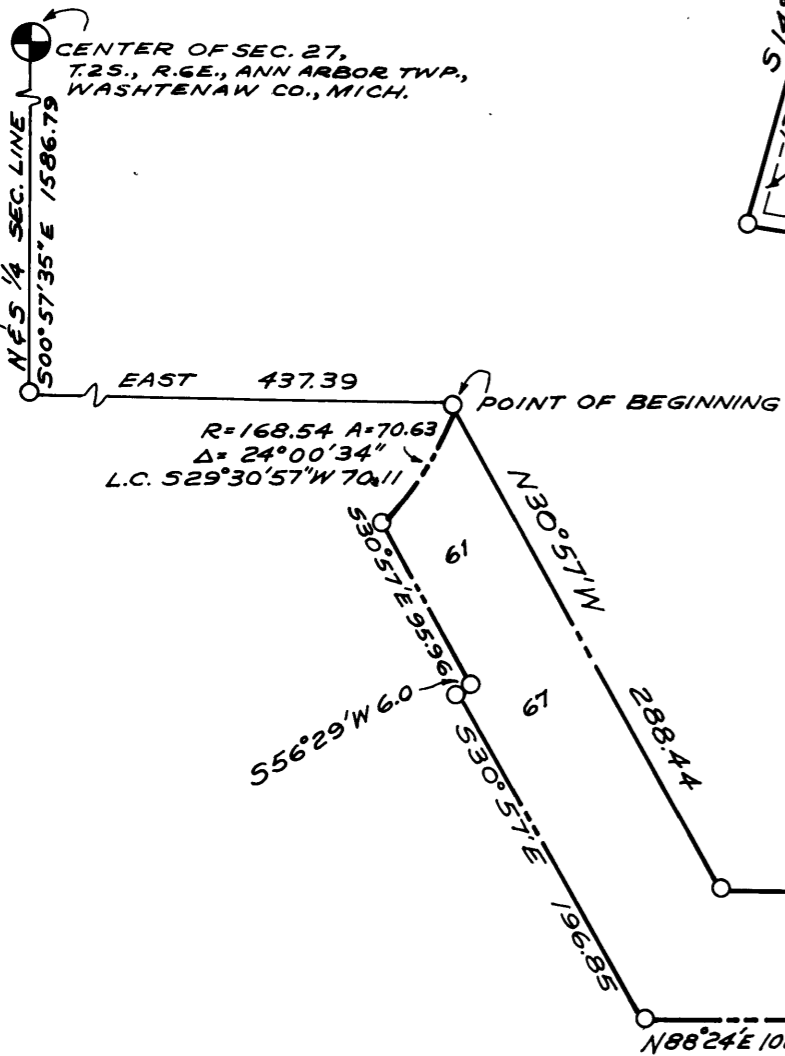
HUNTINGTON WOODS NO. 1

A SUBDIVISION OF PART OF THE S.E. 1/4
OF SECTION 27, T. 2S., R. 6E., ANN ARBOR
TOWNSHIP, WASHTENAW COUNTY, MICHIGAN

PREPARED BY ~
AMERICAN ENGINEERING CO.
CIVIL ENGR'S & SURVEYORS
ANN ARBOR, MICHIGAN



ALL DIMENSIONS ARE IN FEET & DECIMALS
CURVE DIMENSIONS ARE ALONG THE ARC



UNPLATTED

HUNTINGTON PLACE ~ 67' WD.

588°24'W

GEDDES AVE. RIVERVIEW HEIGHTS

54

ORIGINAL

SHEET 2 of 2

HUNTINGTON WOODS NO. 1

A SUBDIVISION OF PART OF THE S.E. 1/4
OF SECTION 27, T.2 S., R.6 E., ANN ARBOR
TOWNSHIP, WASHTENAW COUNTY,
MICHIGAN

DEDICATION

KNOW ALL MEN BY THESE PRESENTS, that we, AMERICAN TITLE COMPANY OF WASHTENAW, a Michigan Corporation, by Mark W. Griffin President, and John S. Dobson Secretary, and NEWTON REALTY CO., a Michigan Corporation, by Maynard A. Newton President, and James K. Newton Treasurer as Proprietors, have caused the land embraced in the annexed plat to be surveyed, laid out and platted to be known as HUNTINGTON WOODS NO. 1, A Subdivision of Part of the S.E. 1/4 of Section 27, T.2 S., R.6 E., Ann Arbor Township, Washtenaw County, Michigan, and that the streets and roads as shown on said plat are hereby dedicated to the use of the public and the easements as indicated on said plat are not dedicated to the public but reserved for public utilities and any other use designated hereon and no permanent structures are to be located within said easement.

Signed in the presence of:

Witness JUDY MORTON
Witness FRANCES E. MITCHELL
CHRISTINE WEBER
JOYCE V. WEBER

AMERICAN TITLE COMPANY OF WASHTENAW

Mark W. Griffin
President MARK W. GRIFFIN
John S. Dobson
Secretary JOHN S. DOBSON

NEWTON REALTY CO.

Maynard A. Newton
President MAYNARD A. NEWTON
James K. Newton
Treasurer JAMES K. NEWTON

COUNTY TREASURER'S CERTIFICATE

Office of County Treasurer, Washtenaw County.

I hereby certify that there are no tax liens or titles held by the State on the lands described hereon, and that there are no tax liens or titles held by individuals on said lands for the five years preceding the 10 day of July 1963 and that the taxes for said period of five years are all paid, as shown by the records of this office.

Sylvester A. Leonard
Sylvester A. Leonard
County Treasurer.

This certificate does not apply to taxes, if any, now in process of collection by township, city or village collecting officers.

CERTIFICATE OF APPROVAL BY BOARD OF COUNTY ROAD COMMISSIONERS.

This plat has been examined and was approved on the 14 day of Aug, 1963 by the Washtenaw County Board of Road Commissioners.

Raymond L. Koch
Chairman Raymond L. Koch
Member Don A. Weir

Member

APPROVAL BY COUNTY PLANNING COMMISSION

This plat was approved by the Washtenaw County Metropolitan Planning Commission at a Meeting held on the 14 day of August, 1963.

William G. Hayes
William G. Hayes, Chairman
Robert D. Carpenter
Robert D. Carpenter, Director

EXAMINED AND APPROVED

Date October 1, 1963

Billie S. Farnum
BILLIE S. FARNUM
AUDITOR GENERAL
By Richard E. Lomax
Richard E. Lomax - Plat Examiner

RECEIVED FOR RECORD
OCT 2 11 01 AM '63
PATRICIA NEWKIRK HARDY
REGISTER OF DEEDS
WASHTENAW COUNTY, MICH.
FILED 16 p 212

ACKNOWLEDGMENT

STATE OF MICHIGAN }
County of Washtenaw } ss

On this 3rd day of July A.D., 1963, before me, FRANCES E. MITCHELL a Notary Public in and for said County, appeared MARK W. GRIFFIN and JOHN S. DOBSON to me personally known, who being each by me duly sworn did say they are the President and Secretary respectively of American Title Company of Washtenaw, a Michigan Corporation, and that the seal affixed to said instrument is the corporate seal of said corporation by authority of its Board of Directors and the said MARK W. GRIFFIN JOHN S. DOBSON acknowledged said instrument to be the free act and deed of said corporation.

Frances E. Mitchell
Notary Public FRANCES E. MITCHELL
Washtenaw County, Mich.

My Commission expires OCTOBER 23, 1965

ACKNOWLEDGMENT

STATE OF MICHIGAN }
County of Washtenaw } ss

On this 5th day of July A.D., 1963, before me, a Notary Public in and for said County, appeared Maynard A. Newton and James K. Newton, to me personally known, who being each by me duly sworn did say they are the President and Treasurer respectively of Newton Realty Co., a Michigan Corporation, and that the seal affixed to said instrument is the corporate seal of said corporation by authority of its Board of Directors and the said Maynard A. Newton and James K. Newton acknowledged said instrument to be the free act and deed of said corporation.

Joyce V. Weber
Notary Public JOYCE V. WEBER
Washtenaw Co., Mich.

My Commission expires 1-10-64

CERTIFICATE OF MUNICIPAL APPROVAL

This plat was approved by the Township Board of Ann Arbor Township at a Meeting held Aug. 27, 1962, and is in compliance with Section 19-A, and the width of lots is in compliance with requirements of Section 30, Act 172 of 1929, as amended.

Lawrence J. Frederick
Clerk Lawrence J. Frederick

APPROVAL BY COUNTY PLAT BOARD

This plat was approved on the 13 day of Sept, 1963 by the Washtenaw County Plat Board.

Patricia Newkirk Hardy
Patricia Newkirk Hardy
(County Register of Deeds)

John H. Flook
John H. Flook
(County Drain Commissioner)

J. Martin Remppe
J. Martin Remppe
(Auditor)

John P. Cook
John P. Cook
(Auditor)

Harbert G. Loeffler
Harbert G. Loeffler
(Auditor)

SURVEYOR'S CERTIFICATE

I hereby certify that the plat hereon delineated is a correct one and that permanent metal monuments consisting of bars not less than one-half inch in diameter and 36 inches in length, or shorter bars of not less than one-half inch in diameter lapped over each other at least 6 inches with an over-all length of not less than 36 inches, encased in a concrete cylinder at least 4 inches in diameter and 36 inches in depth have been placed at points marked (o) as thereon shown at all angles in the boundaries of the land platted, at all intersections of streets, intersections of alleys or of streets and alleys, and at the intersections of streets and alleys with the boundaries of the plat as shown on said plat.

Murray J. ...
Murray J. ...
Reg. Civil Engineer & Surveyor

DESCRIPTION OF LAND PLATTED

The land embraced in the annexed plat of HUNTINGTON WOODS NO. 1 a subdivision of part of the S.E. 1/4 of Section 27, T.2 S., R.6 E., Ann Arbor Township, Washtenaw County, Michigan, is described as follows: Commencing at a point on the N & S 1/4 section line of Section 27, T.2 S., R.6 E., Ann Arbor Township, Washtenaw Co., Mich., said point being located 800' 57' 35" E 1586.79 ft. from the center of said section and running thence East 437.39 ft. to a Point of Beginning, thence 70.63 ft. along the arc of a 168.54 ft. radius circular curve concave Northwesterly through a central angle of 24° 00' 34", the long chord of which bears S29° 30' 57" W 70.11 ft.; thence S30° 57' E 95.96 ft.; thence S56° 29' W 6.0 ft.; thence S30° 57' E 196.85 ft.; thence N88° 24' E 102.35 ft.; thence S1° 36' E 328.78 ft.; thence N88° 24' E 300.20 ft.; thence N1° 36' W 62.5 ft.; thence N68° 13' E 266.35 ft.; thence N1° 36' W 174.39 ft.; thence N88° 24' E 71.74 ft.; thence 197.19 ft. along the arc of a 115.85 ft. radius circular curve concave Northerly through a central angle of 97° 31' 31", the long chord of which bears S77° 03' 20" E 174.23 ft.; thence N54° 10' 55" E 40.19 ft.; thence N1° 46' 05" E 394.47 ft.; thence N54° 35' 05" W 371.71 ft.; thence N1° 36' W 227.05 ft.; thence N52° 05' 37" W 276.43 ft.; thence S39° 58' 10" W 133.62 ft.; thence 10.74 ft. along the arc of a 230.10 ft. radius circular curve concave Southwesterly through a central angle of 2° 40' 30", the long chord of which bears N51° 22' 05" W 10.74 ft.; thence S37° 17' 40" W 66 ft.; thence N52° 42' 20" W 38.02 ft.; thence S40° 12' W 201.24 ft.; thence S14° 02' W 327.28 ft.; thence S82° 44' 21" E 357.79 ft.; thence S1° 36' E 291.44 ft.; thence S88° 24' W 363.35 ft.; thence N30° 57' W 288.44 ft. to the Point of Beginning. Containing 23 lots numbered 1 through 23 consecutively.

FILED 16 p 212