

STARWICK HEIGHTS NO.3

A SUBDIVISION OF PART OF THE N 1/2 OF SECTION 21, T2S, R6E, CITY OF ANN ARBOR, WASHTENAW COUNTY, STATE OF MICHIGAN.



ALL DIMENSIONS ARE IN FEET
 ALL DIMENSIONS ON CURVES ARE ARC LENGTHS
 ALL BEARINGS ARE RELATED TO STARWICK HEIGHTS SUBDIVISION L.II,P.4.
 CONCRETE MONUMENTS SET AT POINTS MARKED ○
 1/2" X 18" IRON PIPES SET AT LOT CORNERS MARKED ●
 NO ACCESS FROM LOT 44 TO TRAVER ROAD

SURVEYOR'S CERTIFICATE

I, Robert J. Jagow, Surveyor, certify:
 That I have surveyed, divided and mapped the land shown on this plat, described as follows:
 STARWICK HEIGHTS NO. 3 a subdivision of part of the N 1/2 of Section 21, T2S, R6E, City of Ann Arbor, Washtenaw County, State of Michigan. Commencing at the North 1/4 corner of Section 21, T2S, R6E, City of Ann Arbor, Washtenaw County, Michigan; thence S 1°-05' E 161.92 feet along the N & S 1/4 line of said section for a PLACE OF BEGINNING; thence continuing along said N & S 1/4 line, S 1°-05' E 160.0 feet; thence S 20°-46' E 85.95 feet; thence S 13°-49' E 183.67 feet; thence S 18°-18' E 398.52 feet; thence S 44°-12'-30" W 263.59 feet along the center line of Traver Road; thence N 1°-05' W 376.04 feet along the N & S 1/4 line of said Section 21; thence S 87°-08'-30" W 141.42 feet; thence N 13°-54' W 311.13 feet; thence N 21°-15' W 160.69 feet; thence N 2°-01' W 147.74 feet; thence N 86°-13'-40" E 268.42 feet to the Place of Beginning, containing 18 lots, numbered 27 through 44 inclusive and one Outlot lettered "A".

That I have made such survey, land-division and plat by the direction of the owners of such plat.

That such plat is a correct representation of all the exterior boundaries of the land surveyed and the subdivision of it.

That the required monuments and lot markers have been located in the ground or that surety has been deposited with the municipality, as required by Section 125 of the Act.

That the accuracy of the survey is within the limits required by Section 126 of the Act.

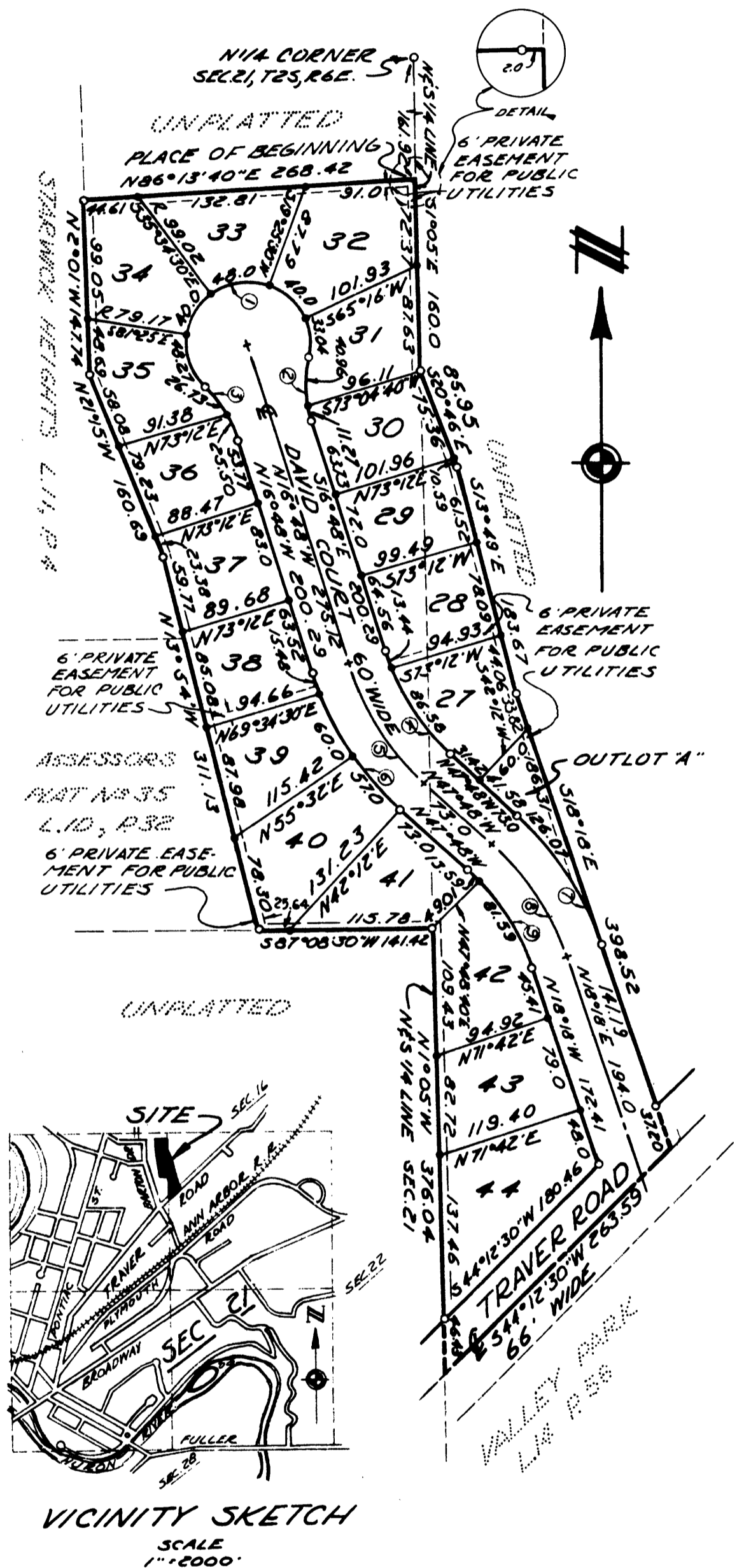
That the bearings shown on the plat are expressed as required by Section 126(3) of the Act and as explained in the legend.

DEC. 10, 1969
 Date

Atwell-Hicks, Inc.
 110 North First Street
 Ann Arbor, Michigan 48108



Robert J. Jagow
 Robert J. Jagow, President
 Registered Surveyor No. 6998



CURVE NO.	RADIUS	ARC LENGTH	DELTA	CHORD LENGTH	CHORD BEARING
1	50.0	209.31	239°51'10"	86.67	N73°0'12"E
2	100.0	52.23	29°55'35"	51.64	S1°50'10"E
3	100.0	52.23	29°55'35"	51.64	N31°45'30"W
4	184.86	100.02	31°00'	98.80	N32°18'W
5	244.86	116.25	31°00'	114.84	N32°18'W
6	244.86	132.48	31°00'	130.87	N32°18'W
7	244.86	126.07	29°30'	124.68	S33°03'E
8	244.86	110.63	29°30'	109.41	S33°03'E
9	184.86	95.18	29°30'	94.13	S33°03'E

6926
3-F-557

