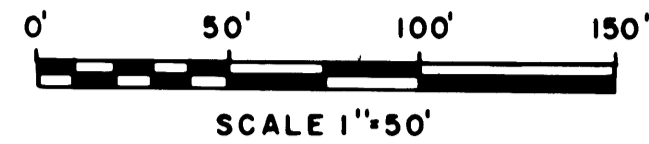


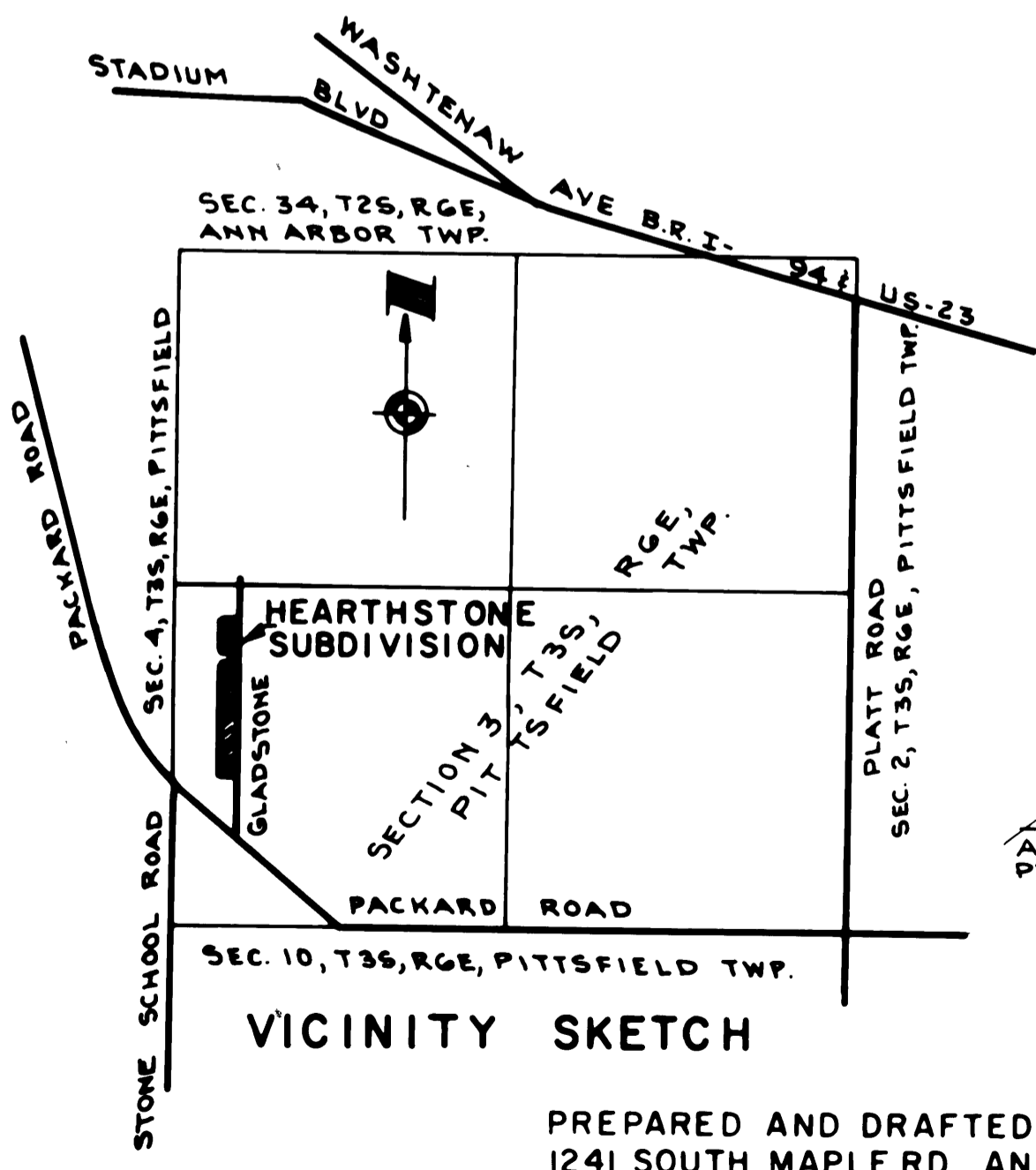
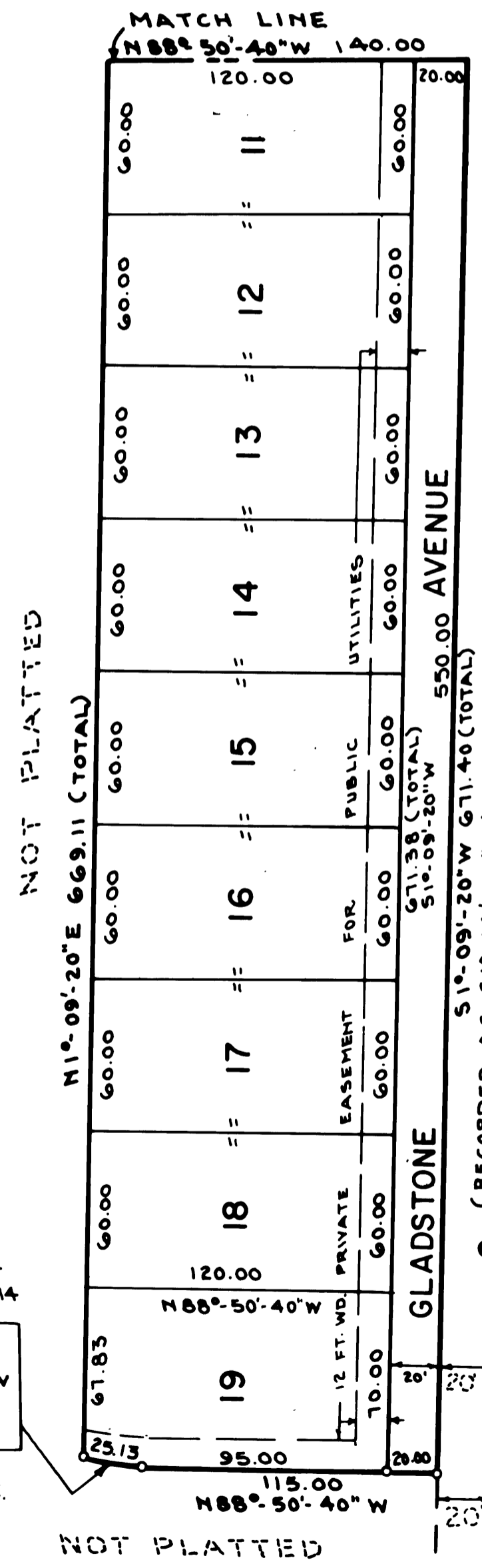
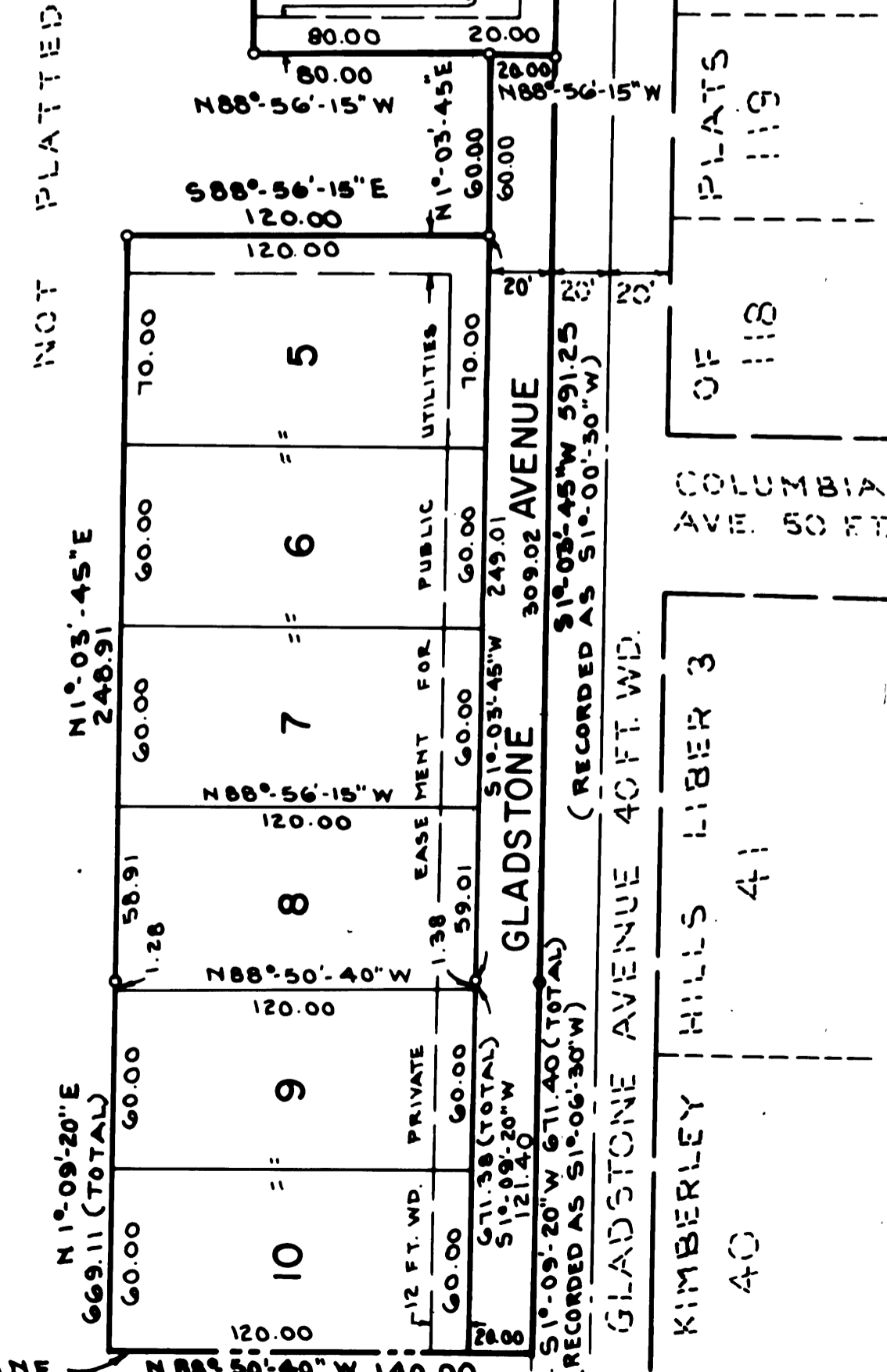
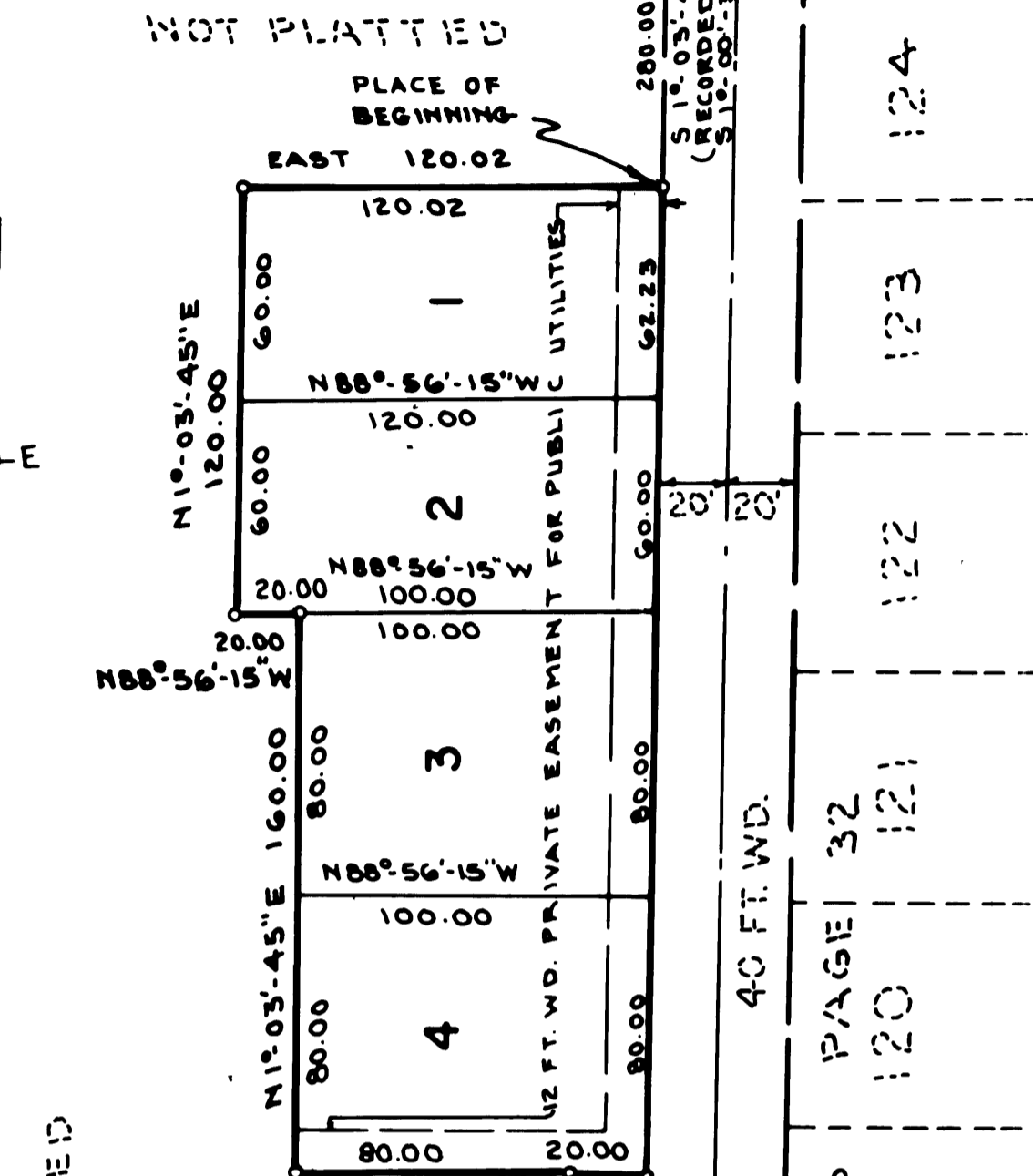
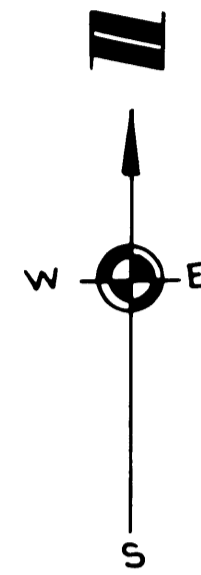
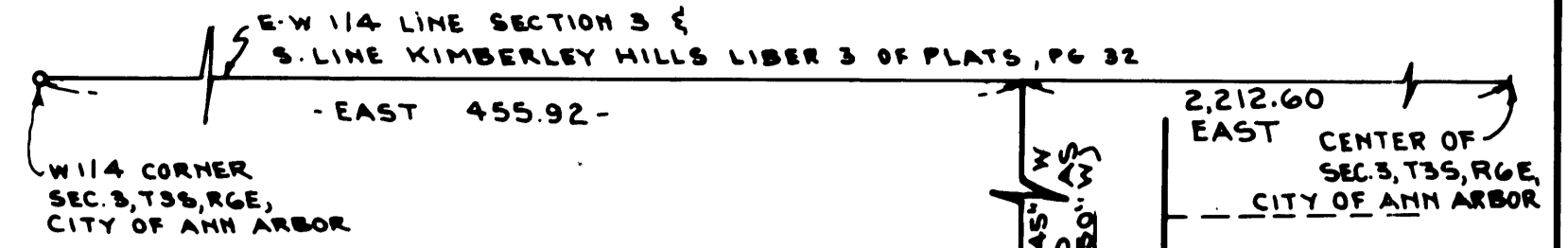
# HEARTHSTONE SUBDIVISION

A SUBDIVISION OF PART OF THE SW 1/4 OF SECTION 3, T3S, R6E, CITY OF ANN ARBOR, WASHTENAW COUNTY, MICHIGAN



ALL DIMENSIONS ARE IN FEET  
ALL BEARING ARE RELATED TO THE SOUTH LINE OF "KIMBERLEY HILLS" AS RECORDED IN LIBER 3 OF PLATS, PAGE 32, WASHTENAW COUNTY RECORDS.

3/4" X 18" IRON PIPE SET AT ALL LOT CORNERS  
ALL DIMENSIONS ON CURVES ARE ARC LENGTHS  
1/2" X 36" IRON BAR ENCASED IN 4" DIAMETER CONCRETE MONUMENT SET AT POINTS MARKED "O"



VICINITY SKETCH



ALLEN R. SUGGITT  
REGISTERED PROFESSIONAL ENGINEER NO. 12414

L: 25.13  
R: 145.00  
CH: N83°52'-50"W  
25.09  
Δ: 9°55'-40"

PREPARED AND DRAFTED BY ATWELL-HICKS, INC.  
1241 SOUTH MAPLE RD., ANN ARBOR, MI. 48103

# HEARTHSTONE SUBDIVISION

A SUBDIVISION OF PART OF THE SW 1/4 OF SECTION 3, T3S, R6E,  
CITY OF ANN ARBOR, WASHTENAW COUNTY, MICHIGAN

### SURVEYOR'S CERTIFICATE

I, Allen R. Suggitt, surveyor, certify:

That I have surveyed, divided and mapped the land shown on this plat described as follows: HEARTHSTONE SUBDIVISION, a Subdivision of part of the SW 1/4 of Section 3, T3S, R6E, City of Ann Arbor, Washtenaw County, Michigan. Commencing at the West 1/4 corner of Section 3, T3S, R6E, City of Ann Arbor, Washtenaw County, Michigan; thence EAST 455.92 feet along the East-West 1/4 line of Said Section 3 and the South line of Kimberley Hills Subdivision as recorded in Liber 3 of Plats, Page 32, Washtenaw County Records; thence S 1°-03'-45" W 280.00 feet along the West line of Said Kimberley Hills Subdivision (recorded as S 1°-00'-30" W) for a PLACE OF BEGINNING; thence continuing along the West line of said Kimberley Hills Subdivision S 1°-03'-45" W 591.25 feet (recorded as S 1°-00'-30" W); thence continuing along the West line of said Kimberley Hills Subdivision S 1°-09'-20" W 671.40 feet (recorded as S 1°-06'-30" W); thence N 88°-50'-40" W 115.00 feet; thence 25.13 feet along the arc of a 145.00 foot radius circular curve to the right, central angle of 9°-55'-40" and chord N 83°-52'-50" W 25.09 feet; thence N 1°-09'-20" E 669.11 feet; thence N 1°-03'-45" E 248.91 feet; thence S 88°-56'-15" E 120.00 feet; thence N 1°-03'-45" E 60.00 feet; thence N 88°-56'-15" W 80.00 feet; thence N 1°-03'-45" E 160.00 feet; thence N 88°-56'-15" W 20.00 feet; thence N 1°-03'-45" E 120.00 feet; thence EAST 120.02 feet to the Place of Beginning, containing 19 lots numbered 1 through 19 inclusive and containing 3.69 acres of land more or less.

That I have made such survey, land-division and plat by the direction of the owners of such land.

That such plat is a correct representation of all the exterior boundaries of the land surveyed and the subdivision of it.

That the required monuments and lot markers have been located in the ground or that surety has been deposited with the municipality, as required by Section 125 of the Act.

That the accuracy of survey is within the limits required by Section 126 of the Act.

That the bearings shown on the plat are expressed as required by Section 126 (3) of the Act and as explained in the legend.

FEB. 17, 1984  
Date

ATWELL-HICKS, INC.



Allen R. Suggitt  
Allen R. Suggitt, President  
Professional Engineer No. 12414  
1241 S. Maple Road  
Ann Arbor, Michigan 48103

Richard G. Timmons  
Richard G. Timmons, Secretary  
Licensed Land Surveyor No. 23319  
1241 S. Maple Road  
Ann Arbor, Michigan, 48103



### RECORDING CERTIFICATE

STATE OF MICHIGAN )  
 ) SS.  
County of Washtenaw )

This plat was received for record on the 29th day of January 1986 A.D. at 9:57 A.M., and recorded in Liber 24 of Plats on Page(s) 74 + 75.

Robert M. Harrison  
Robert M. Harrison  
Register of Deeds / County Clerk

### PROPRIETOR'S CERTIFICATE

We as proprietors certify that we have caused the land embraced in this plat to be surveyed, divided, mapped and dedicated as represented on this plat and that the streets are for the use of the public; that the public utility easements are private easements and that all other easements are for the uses shown on the plat.

Witnesses:

Allen R. Suggitt  
Allen R. Suggitt

Richard G. Timmons  
Richard G. Timmons

Harry A. Dion  
Harry A. Dion  
2114 Winchell Drive  
Ann Arbor, Michigan 48104

Patricia Lynch Dion  
Patricia Lynch Dion  
2114 Winchell Drive  
Ann Arbor, Michigan 48104

### ACKNOWLEDGEMENT

STATE OF MICHIGAN )  
 ) SS.  
County of Washtenaw )

Personally came before me this 17th day of February, 1984, the above named Harry A. Dion and Patricia Lynch Dion, husband and wife, to me known to be the persons who executed the foregoing instrument and acknowledged that they executed the same as their free act and deed.

Gloria J. Maurer  
Gloria J. Maurer  
Notary Public, Washtenaw  
County, Michigan  
My Commission expires:  
December 8, 1987

### COUNTY TREASURER'S CERTIFICATE

The records in my office show no unpaid taxes or special assessments for the five years preceding May 29, 1985 involving the lands included in this plat.

Michael A. Stimpson  
Michael A. Stimpson, Treasurer  
Washtenaw County, Michigan

CERTIFIED TRUE COPY OF  
RECORDED PLAT  
BY DEPARTMENT OF COMMERCE

By Richard E. Lomax  
Richard E. Lomax, L.S.  
Manager, Plat Section

Date March 17, 1986

### CERTIFICATE OF MUNICIPAL APPROVAL

I certify that this plat was approved by City Council of the City of Ann Arbor, at a meeting held July 15, 1985 and was reviewed and found to be in compliance with Act 288, P.A. of 1967, that public sewers and public water mains are installed and are ready for connection, and the City of Ann Arbor

does have the proper adopted zoning and subdivision control ordinance with reference to Section 148 (4) and 186 of Act 288, P.A. of 1967 and the City of Ann Arbor waives minimum lot size requirements. Proper surety has been posted with the City of Ann Arbor to insure the placement of monuments and lot corners prior to AUGUST 14, 1986

Winifred W. Northcross  
Winifred W. Northcross, City Clerk

### COUNTY PLAT BOARD CERTIFICATE

This plat has been reviewed and is approved by the Washtenaw County Plat Board on November 18, 1985 as being in compliance with all of the provisions of Act 288, P.A. of 1967, and the Plat Board's applicable rules and regulations.

Meri Lou Murray  
Meri Lou Murray  
Chair, Washtenaw County Plat Board

Robert M. Harrison  
County Clerk / Register of Deeds

Michael A. Stimpson  
Michael A. Stimpson  
County Treasurer

### COUNTY DRAIN COMMISSIONER'S CERTIFICATE

Approved on May 30, 1985 as complying with Section 192 of Act 288, P.A. of 1967, and the applicable rules and regulations published by my office in the County of Washtenaw.

James Murray  
James Murray, Drain Commissioner

RECORDED  
WASHTENAW COUNTY CLERK  
EX-101-1-75  
01/29/1986  
2 OF 2