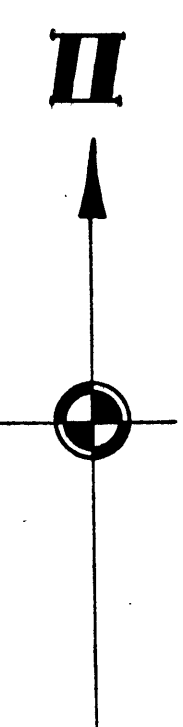
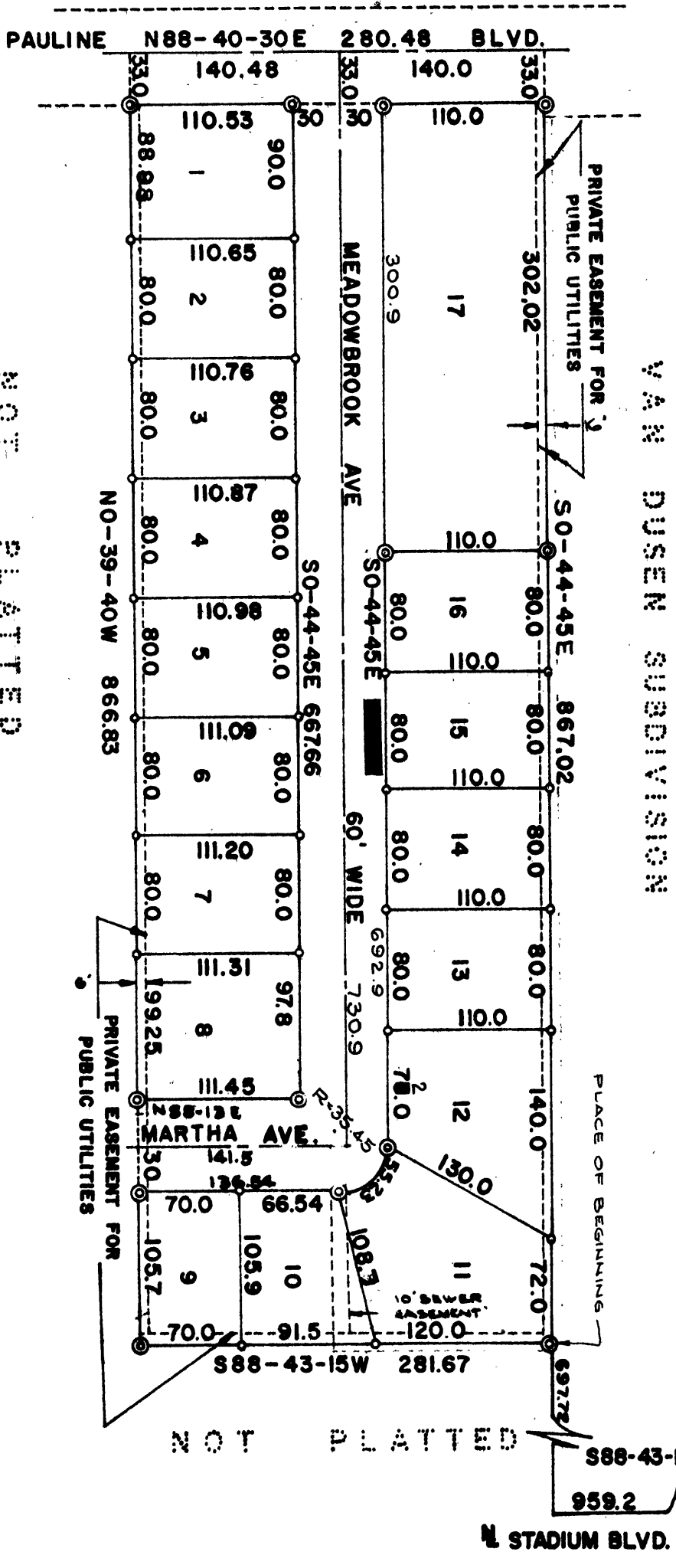


SCHUMACHER SUBDIVISION

PART OF THE NE 1/4 OF SECTION 31, T25, R6E
 CITY OF ANN ARBOR, WASHINGTON COUNTY, MICHIGAN
 ALL DIMENSIONS IN FEET AND DECIMALS THEREOF
 SURVEY BY ATWELL-HICKS, INC. ANN ARBOR



NOT PLATTED



NOT PLATTED

DEDICATION
 KNOW ALL MEN BY THESE PRESENTS, that we, Ernest A. Krause, Anna K. Krause His wife, Gottlob Schumacher, Karoline Schumacher his wife, George Krause Katherine M. Krause his wife as proprietors, have caused the land embraced in the annexed plat to be surveyed, laid out and platted to be known as SCHUMACHER SUBDIVISION part of the NE 1/4 of Section 31, T25, R6E City of Ann Arbor, Washtenaw County, Michigan and that the Boulevard and Avenues as shown on said plat are hereby dedicated to the use of the public.

Signed in the Presence of:
 Ernest A. Krause
 Anna K. Krause
 Gottlob Schumacher
 Karoline Schumacher
 Witnesses:
 Helen Adcock
 George Krause
 Katherine M. Krause

ACKNOWLEDGMENT

STATE OF MICHIGAN)
 County of Washtenaw) ss.
 On this 11th day of August, A. D., 1960 before me, a Notary Public in and for said County, personally came Ernest A. Krause, Anna K. Krause, Gottlob Schumacher and Karoline Schumacher, known to me to be the persons who executed the above dedication, and acknowledged the same to be their free act and deed.

Helen Adcock
 Notary Public, Michigan
 My Commission expires July 6, 1962

CERTIFICATE OF APPROVAL BY THE CITY PLANNING COMMISSION

This plat was approved by the Planning Commission of the City of Ann Arbor, Michigan at a meeting held on the 23rd day of August, 1960.

Richard A. Ware
 Richard A. Ware, Chairman
William J. Bate
 William J. Bate, Secretary

DESCRIPTION OF LAND PLATTED

The land embraced in the annexed plat of SCHUMACHER SUBDIVISION part of the NE 1/4 of Section 31, T25, R6E, City of Ann Arbor, Washtenaw County, Michigan is described as follows:

Commencing at the E 1/4 corner of Section 31, T25, R6E, City of Ann Arbor, Washtenaw County, Michigan; thence N 1°-13'-30" W 1.75 feet; thence S 88°-43'-15" W 959.20 feet; thence N 0°-44'-45" W 697.72 feet for a PLACE OF BEGINNING; thence S 88°-43'-15" W 281.67 feet; thence N 0°-39'-40" W 866.83 feet; thence N 88°-40'-30" E 280.48 feet; thence S 0°-44'-45" E 867.02 feet to the Place of Beginning, containing 17 lots numbered 1 through 17 inclusive.

SURVEYOR'S CERTIFICATE

I hereby certify that the plat hereon delineated is a correct one and that permanent metal monuments consisting of bars not less than one-half inch in diameter and 36 inches in length, or shorter bars of not less than one-half inch in diameter lapped over each other at least 6 inches with an over-all length of not less than 36 inches, encased in a concrete cylinder at least 4 inches in diameter and 36 inches in depth have been placed at points marked thus (⊙) as thereon shown at all angles in the boundaries of the land platted, at all the intersections of streets, intersections of alleys, or of streets and alleys, and at the intersections of streets and alleys with the boundaries of the plat as shown on said plat.

Gordon T. Hodgson
 Registered Land Surveyor # 10061

CERTIFICATE OF MUNICIPAL APPROVAL

This plat was approved by the Common Council of the City of Ann Arbor at a meeting held September 17, 1960, and that the width of lots is in compliance with requirements of Section 30, Act 172, of 1929, as amended.

Fred J. Hooker
 Fred J. Hooker, Clerk

COUNTY TREASURER'S CERTIFICATE

I hereby certify, that there are no tax liens or titles held by the State on the lands described hereon, and that there are no tax liens or titles held by individuals on said lands for the five years preceding the 20th day of August, 1960, and that the taxes for said period of five years are all paid, as shown by the records of this office.

W. F. Verner
 W. F. Verner, County Treasurer

APPROVAL BY COUNTY PLAT BOARD

This plat was approved on the 22nd day of September, 1960, by the Washtenaw County Plat Board.
John H. Flook
 John H. Flook
 (County Drain Commissioners)
Herbert G. Isdell
 Herbert G. Isdell
 (Auditor)

John P. Cook
 John P. Cook
 (Auditor)

CORNER
 Registering Office
 Washtenaw County, MI

Otis M. Smith
 Otis M. Smith
 AUDITOR GENERAL
 State of Michigan

Patricia Newkirk Hardy
 Patricia Newkirk Hardy
 (County Drain Commissioners)
Herbert G. Isdell
 Herbert G. Isdell
 (Auditor)