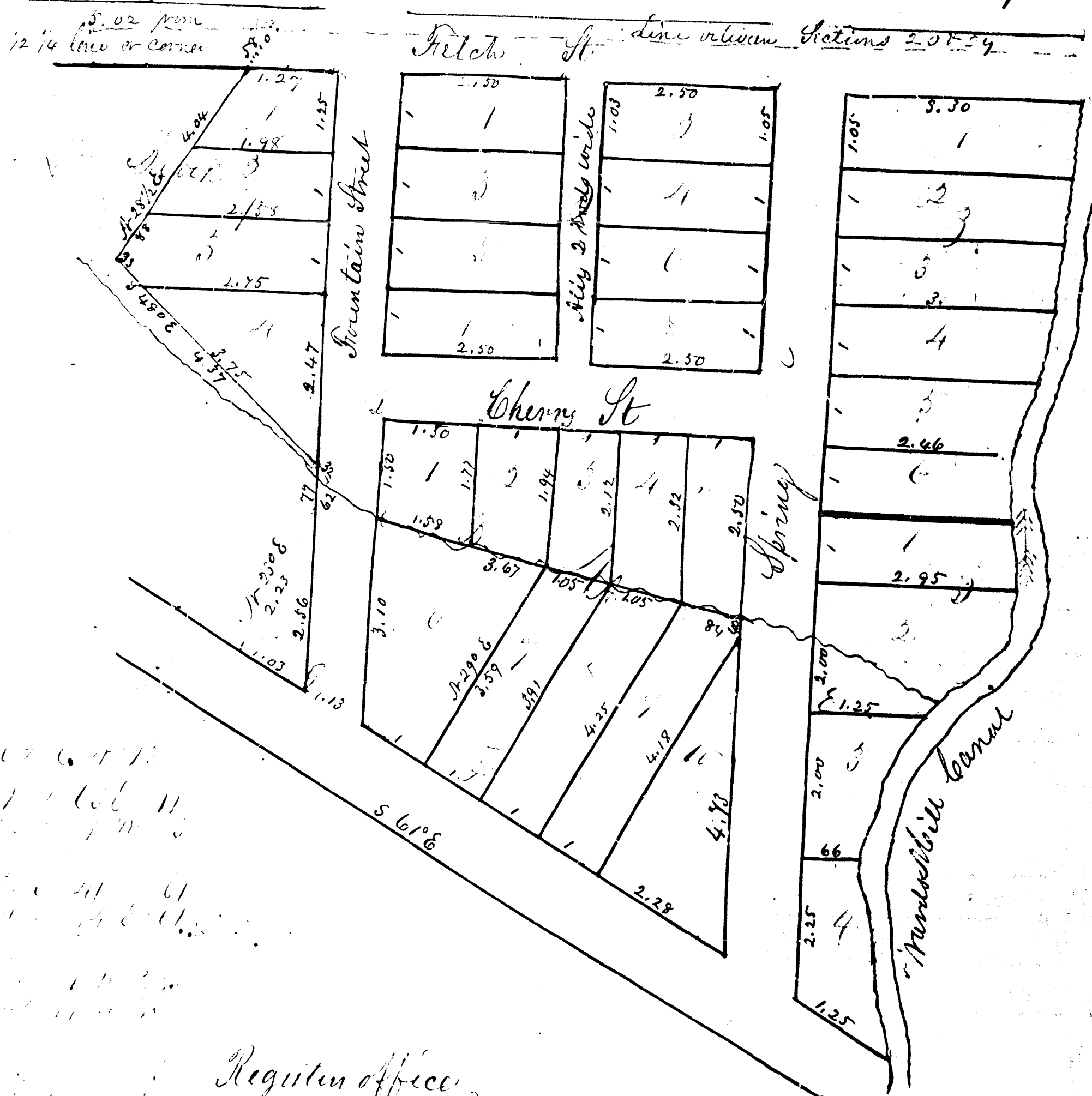


Feiches Addition to Ann Arbor
 Situated on the North part of East half of North West quarter of Section 29 Town
 Two South of Range Six East. The Streets are all rods wide. The lengths of lines are
 given in chains and links marked on the lines. Blocks and Lots are numbered on
 the Centre with red ink.

The Street on North line is on the section line. The North and South Streets are
 called North and parallel to the West line of the East half South West quarter of
 Section 20. All notes are given with the Streets called North and South.

Registers Office Washburn County
 Rec'd & recorded this 7th day of May A.D. 1859 at 9 o'clock A.M. in Liber 45 of Deeds on page 140
 For H. G. Sheldon Register & Clerk Depts.



[Faint handwritten notes, possibly a list of lot numbers or measurements.]

Registers Office
 Washburn County, Acknowledgment of Samuel Pittibone Rec'd & Recorded this
 13th day of May A.D. 1860 at 2 1/2 o'clock P.M. in Liber 45 of Deeds page 140
 State of Michigan
 County of Washburn
 County of Washburn, on this 11th day of October in the year one thousand
 Eight Hundred and fifty nine at Ann Arbor in said County personally appeared and before me a Notary Public
 in and for said County Samuel Pittibone known to me to be the person who signed the within certificate and
 acknowledged and declared that he is a civil engineer and surveyor by profession and that he made
 and executed the within certificate that at the request of Alpheus Felch the proprietor within named he
 the survey of the lands represented on the within plat or map and run the several lines as indicated
 angles and distances and laid out the lots, blocks, streets and alleys represented & shown by actual
 survey on the ground and that said plat or map was made by him as an actual representation
 of the same as ascertained surveyed and located on the ground
 Samuel Simpson Notary Public in and for Washburn County