

# WAGNER'S SUBDIVISION

of a part of  
A. TEN BROOKS ADDITION  
to the City of Ann Arbor, Mich.

Jan 4<sup>th</sup> 1905

Scale 50'-1"

dedication.

**Know All Men by these Presents, That** re

Charles M. Wagner proprietor and Carrie S. Wagner his wife have caused the land embraced in the annexed plat to be surveyed, laid out and platted to be known as Wagner's Subdivision of a part of A. Ten Brooks addition to the City of Ann Arbor, Mich. and all <sup>interest</sup> in the streets as shown on said plat are hereby dedicated to the public.

Signed and Sealed in presence of

Emmett Coon  
Mattie B Schairer

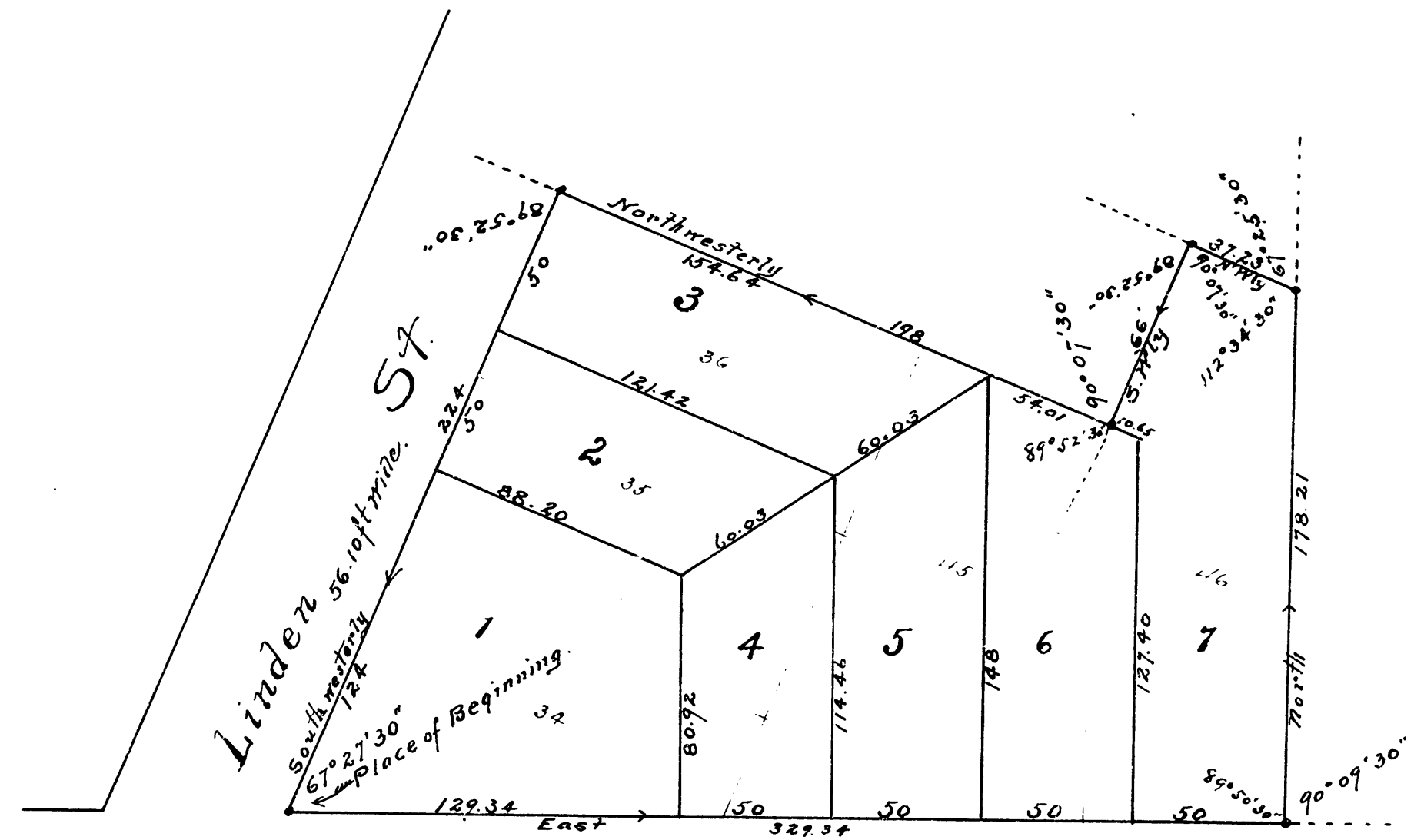
Charles M. Wagner.  
Carrie S. Wagner.

State of Michigan } s.s.  
County of Washtenaw }

On this 13<sup>th</sup> day of March 1905 before me a notary public in and for said County, personally came the above named Charles M. Wagner and Carrie S. Wagner his wife, known to me to be the persons who executed the above dedication and acknowledged the same to be their free act and deed.

Emmett Coon,

Notary Public, Washtenaw Co., Mich.  
My Commission expires June 9, 1907



South University Ave.  
66 ft wide.

### Description of Land Platted.

The land embraced in the annexed plat of Wagner's Subdivision of a part of A. Ten Brooks Addition to the City of Ann Arbor, Mich. is described as follows - Beginning at the North East corner of South University Ave and Linden Street; thence East along the north line of S. University Ave 329.34 feet; thence deflecting to the left 90° 09' 30" 178.21 feet; thence deflecting to the left 67° 25' 30" 37.28 feet; thence deflecting to the left 89° 52' 30" 66 feet; thence deflecting to the right 89° 52' 30" 198 feet to the Easterly line of Linden St; thence deflecting to the left 89° 52' 30" 224 feet to the place of beginning.

### Surveyors Certificate

I hereby certify that the plat hereon delineated is a correct one and that permanent monuments consisting of gas pipe surrounded by brick and stone have been planted at points marked • as thereon shown, at all angles in the land platted.

E. M. Groves, Surveyor.

Note: Lines and figures in red refer to Ten Brooks Addition.

Examined and Approved  
March 25 - 1905.  
John F. Wilkinson,  
Deputy Auditor General.

State of Michigan } s.s.  
County of Washtenaw }

We John Lawson Register of Deeds, and E. M. Groves Surveyor, hereby certify that we have each carefully compared this copy with the original plat of Wagner's Subdivision of a part of A. Ten Brooks Addition, and that it is an exact copy thereof and of the whole of such original map or plat.

John Lawson  
E. M. Groves

Register of Deeds -  
Surveyor -

Filed for Record in the  
Washtenaw County,  
Michigan, this 2<sup>nd</sup> day of  
May A. D. 1905  
at 3 o'clock P. M., and Recorded  
in Lib. 2 of Plats on Page 16  
John Lawson  
Register of Deeds.

