

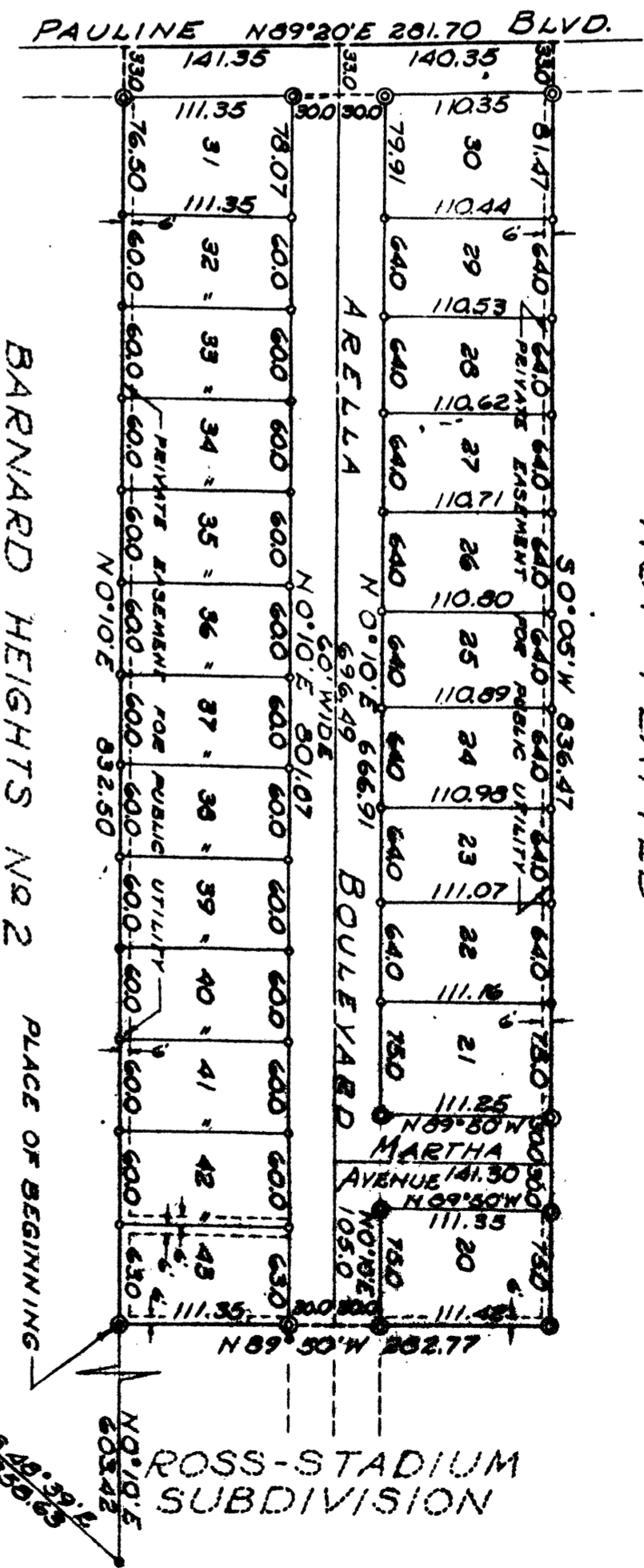
ROSS-STADIUM SUBDIVISION NO. 2

PART OF THE NE 1/4 OF SECTION 31, T2S, R6E,
CITY OF ANN ARBOR, WASHTEWAW COUNTY, MICHIGAN
ALL DIMENSIONS IN FEET AND DECIMALS THEREOF
SURVEY BY ATWELL-HICKS, INC. ANN ARBOR

SCALE: 1" = 100'

0 100 200 300

ARBORDALE SUBDIVISION



NOT PLATTED

DEDICATION

KNOW ALL MEN BY THESE PRESENTS, that I, Mark Ross as proprietor, have caused the land embraced in the annexed plat to be surveyed, laid out and platted, to be known as ROSS-STADIUM SUBDIVISION NO. 2 part of the NE 1/4 of Section 31, T 2 S, R 6 E, City of Ann Arbor, Washtenaw County, Michigan and that the boulevard and avenue as shown on said plat is hereby dedicated to the use of the public.

Signed and Sealed in
the Presence of:

Mark Ross
Mark Ross
(Witness)
George W. Smeets
George W. Smeets (Witness)

ACKNOWLEDGMENT

STATE OF MICHIGAN)
County of Washtenaw) ss.
On this 19th day of December, 1955, before me a Notary Public in and for said County, personally came the above named Mark Ross known to me to be the person who executed the above dedication, and acknowledged the same to be his free act and deed.

George W. Smeets
George W. Smeets
Notary Public, Washtenaw County
My Commission expires Dec 16, 1958

COPY

Recorder's Office
Washtenaw County, Mich.
Plat of Ross-Stadium Subdivision
No. 2
Recorded this 15th day of
December, A.D. 1955 at 12 o'clock
P. M. in Liber 13 of Books

I hereby certify this copy is a true copy of map or plat forwarded to the Register of Deeds for recording.
Filed in Auditor General's Dept.
Date: Dec 21, 1956
By: *W. F. Vermer*
W. F. Vermer
Auditor General

W. F. Vermer
W. F. Vermer
County Treasurer

DESCRIPTION OF LAND PLATTED

The land embraced in the annexed plat of ROSS-STADIUM SUBDIVISION NO. 2 part of the NE 1/4 of Section 31, T 2 S, R 6 E, City of Ann Arbor, Washtenaw County, Michigan is described as follows:

COMMENCING at the W 1/4 corner of Section 31, T2S, R6E, Ann Arbor Township, Washtenaw County, Michigan; thence N 89°-53' E 2942.08 feet; thence N 0°-10' E 616.88 feet; thence N 0°-26' E 130.70 feet; thence S 37°-21' E 498.55 feet; thence S 48°-39' E 358.63 feet; thence N 0°-10' E 603.42 feet to a PLACE OF BEGINNING; thence continuing N 0°-10' E 832.52 feet; thence N 89°-20' E 261.70 feet; thence S 0°-05' W 836.47 feet; thence N 89°-50' W 282.77 feet to the place of beginning, containing 24 Lots numbered 20 through 43 inclusive

SURVEYOR'S CERTIFICATE

I hereby certify that the plat hereon delineated is a correct one and that permanent metal monuments consisting of bars not less than one-half inch in diameter and 36 inches in length, or shorter bars of not less than one-half inch in diameter lapped over each other at least 6 inches with an over-all length of not less than 36 inches, encased in a concrete cylinder at least 4 inches in diameter and 36 inches in depth have been placed at points marked thus @ [X] as thereon shown at all angles in the boundaries of the land platted, at all the intersections of lines of streets, and at the intersections of lines of streets with the boundaries of the plat as shown on said plat.

Robert J. Jagow
Robert J. Jagow
Registered Land Surveyor # 6998

ATTORNEY'S OPINION

I hereby certify from an examination of ARBORDALE... of title to the lands described in this plat that I find no outstanding interest, including mineral rights, other than in the parties joining in the dedication.
Date: December 13, 1955
John R. Ford
John R. Ford
(Attorney)

COUNTY TREASURER'S CERTIFICATE

Office of County Treasurer, Washtenaw County
I hereby certify that there are no tax liens or titles held by the State on the lands described hereon, and that there are not tax liens or titles held by individuals on said lands for the five years preceding the 8th day of March, 1956, and that the taxes for said period of five years are all paid, as shown by the records of this office.
This certificate does not apply to taxes, if any, now in process of collection by township, city or village collecting officers.

W. F. Vermer
W. F. Vermer
(County Treasurer)

MUNICIPAL APPROVAL

This plat was approved by the BOARD OF PUBLIC WORKS of the City of Ann Arbor at a meeting held February 9, 1956.
Fred J. Looker
Fred J. Looker
(Clerk)

MUNICIPAL APPROVAL

This plat was approved by the COMMON COUNCIL of the City of Ann Arbor at a meeting held February 9, 1956.
Fred J. Looker
Fred J. Looker
(Clerk)

MUNICIPAL APPROVAL

This plat was approved by the BOARD OF PUBLIC WORKS of the City of Ann Arbor at a meeting held February 9, 1956.
Fred J. Looker
Fred J. Looker
(Clerk)

CITY CLERK'S CERTIFICATE

Office of City Clerk, City of Ann Arbor
I hereby certify, that the width and depth of lots shown on this plat are in compliance with rules and regulation of the City of Ann Arbor and the requirements as to width and depth of Sec. 30 of Act 172, Public Acts of 1929 as amended by Act 186 Public Acts of 1954.
Fred J. Looker
Fred J. Looker
(Clerk)

CERTIFICATE OF APPROVAL BY THE CITY PLANNING COMMISSION

This plat was approved by the PLANNING COMMISSION of the City of Ann Arbor, Michigan, at a meeting held on the 31st day of JANUARY, 1956.
John E. Swisher, Jr.
John E. Swisher, Jr.
(Chairman)

Spill K. Bennett
Spill K. Bennett
(Secretary)

APPROVAL BY THE COUNTY PLAT BOARD

This plat was approved on the 8th day of March, 1956, by the Washtenaw County Plat Board.
Patricia Newmark Hardy
Patricia Newmark Hardy
(County Register of Deeds)

J. Martin Remp
J. Martin Remp
(Auditor)
Adolph F. Gross
Adolph F. Gross
(Auditor)
Herbert G. Loeffler
Herbert G. Loeffler
(Auditor)