

August 16, 1963
August 26, 1963
August 16, 1963

COPY
Recorder's Office
August 16, 1963
17th
16 plates

COPY
ASSESSOR'S PLAT NO. 47

OF PART OF THE EAST 1/2 OF SECTION 33, T2S, R6E, CITY OF ANN ARBOR, WASHTENAW COUNTY, MICHIGAN, A REPLAT OF ALL OF LOTS 33 THROUGH 45 INCLUSIVE, AND PART OF LOT 46 OF ASSESSOR'S PLAT No. 1 OF FERDON ADDITION, AND A REPLAT OF PART OF LOT 32 OF SCOTTWOOD FIRST ADDITION.

SCALE: 1"=100'

ALL DIMENSIONS IN FEET AND DECIMALS THEREOF
ALL DIMENSIONS ON CURVES ARE ARC LENGTHS
L INDICATES ARC LENGTH CH. INDICATES CHORD
SURVEY BY ATWELL-HICKS, INC.

CERTIFICATE OF APPROVAL BY THE CITY PLANNING COMMISSION

This plat was approved by the Planning Commission of the City of Ann Arbor, Michigan at a meeting held on the 25th day of June, 1963.

Richard A. Ware, Chairman
David S. Pollock, Vice-Chairman
Joseph W. Edwards, Secretary

APPROVAL BY COUNTY PLAT BOARD

This plat was approved on the 2nd day of August, 1963, by the Washtenaw County Plat Board.

Patricia Newkirk Hardy, County Register of Deeds
John H. Flook, County Drain Commissioner
J. Martin Rempp, Auditor
Herbert G. Loeffler, Auditor
John P. Cook, Auditor

MUNICIPAL APPROVAL

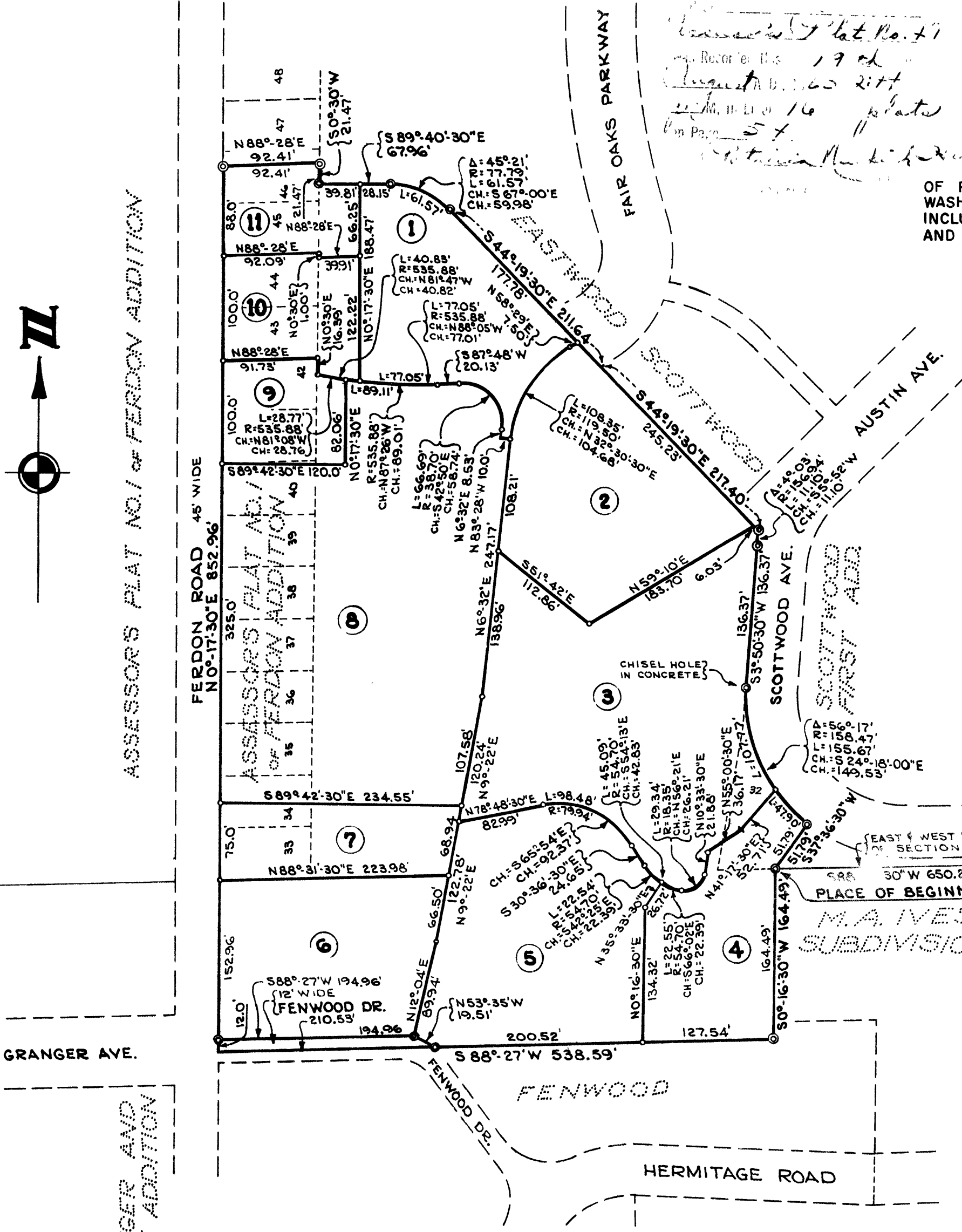
This plat was approved by the common council of the City of Ann Arbor at a meeting held July 1, 1963, and is in compliance with Section 19a, Act 172, Public Acts of 1929, as amended.

Fred J. Looker, Clerk

SURVEYOR'S CERTIFICATE

I hereby certify that the plat hereon delineated is a correct one and that permanent metal monuments consisting of bars not less than one-half inch in diameter and 36 inches in length, or shorter bars of not less than one-half inch in diameter lapped over each other at least 6 inches with an over-all length of not less than 36 inches, encased in a concrete cylinder at least 4 inches in diameter and 36 inches in depth have been placed at points marked thus (O) as thereon shown at all angles in the boundaries of the land platted, at all the intersections of streets, intersections of alleys, or of streets and alleys, and at the intersection of streets and alleys with the boundaries of the plat as shown on said plat.

Carl H. Soll, Registered Land Surveyor No. 13043



DEDICATION

KNOW ALL MEN BY THESE PRESENTS, that I, Howard L. Ledbetter, Assessor of the City of Ann Arbor of Washtenaw County, State of Michigan, by virtue of authority in me vested by Section 51, Act 172, of 1929, having been duly authorized by the City Council have caused the land described in the annexed plat to be surveyed, laid out and platted, to be known as ASSESSOR'S PLAT NO. 47 of part of the East 1/2 of Section 33, T2S, R6E, City of Ann Arbor, Washtenaw County, Michigan, a replat of all of Lots 33 through 45 inclusive, and part of Lot 46 of Assessor's Plat No. 1 of Ferdon Addition, and a replat of part of Lot 32 of Scottwood First Addition, and that the Drive as shown on said plat is now being used for such purposes, and that the plat conforms with the requirements of Section 51, Act 172 of Public Acts of 1929, as amended.

Witnesses: Robert R. Lupi, Wayne G. Johnson, Howard L. Ledbetter, Assessor of the City of Ann Arbor

ACKNOWLEDGMENT

STATE OF MICHIGAN)
County of Washtenaw)
On this 2nd day of May, A.D. 1963, before me, a Notary Public in and for said County, personally came the above named Howard L. Ledbetter, Assessor of the City of Ann Arbor, known to me to be the person who executed the above dedication, and acknowledged the same to be his free act and deed as such.
Esther I. Michelfelder, Notary Public, Washtenaw County, Michigan
My Commission expires June 29, 1967.

DESCRIPTION OF LAND PLATTED

The land embraced in the annexed plat of ASSESSOR'S PLAT NO. 47, of part of the East 1/2 of Section 33, T2S, R6E, City of Ann Arbor, Washtenaw County, Michigan, a replat of all of Lots 33 through 45 inclusive, and part of Lot 46 of Assessor's Plat No. 1 of Ferdon Addition, and a replat of part of Lot 32 of Scottwood First Addition is described as follows:
Commencing at the East 1/4 corner of Section 33, T2S, R6E, City of Ann Arbor, Washtenaw County, Michigan; thence along the East and West 1/4 line of said Section, S 88°-31'-30" W 650.22 feet for a PLACE OF BEGINNING; thence S 0°-16'-30" W 164.49 feet; thence S 88°-27' W 538.59 feet; thence N 0°-17'-30" E 852.96 feet; thence N 88°-28' E 92.41 feet; thence S 0°-30' W 21.47 feet; thence along the southerly line of Eastwood Subdivision in the following described courses: S 89°-40'-30" E 67.96 feet and Southeasterly 61.57 feet along the arc of a tangential circular curve concave to the South, radius 77.79 feet, subtended by a chord which bears S 67°-00' E 59.98 feet, and along a line tangential to said curve, S 44°-19'-30" E 211.64 feet; thence along the Southwesterly line of Scottwood Addition, S 44°-19'-30" E 217.40 feet; thence along the west line of Scottwood Avenue in the following described courses: Southerly 11.10 feet along the arc of a nontangential circular curve concave to the East, radius 156.94 feet, subtended by a chord which bears S 5°-52' W 11.10 feet, and along a line tangential to said curve, S 3°-50'-30" W 136.37 feet, and Southeasterly 155.67 feet along the arc of a tangential circular curve concave to the NE, radius 158.47 feet, subtended by a chord which bears S 24°-18'-00" E 149.53 feet; thence along the Northwest line of Lot 14 of M.A. Ives Subdivision, S 37°-36'-30" W 51.79 feet to the Place of Beginning, containing 11 lots numbered 1 through 11 inclusive.