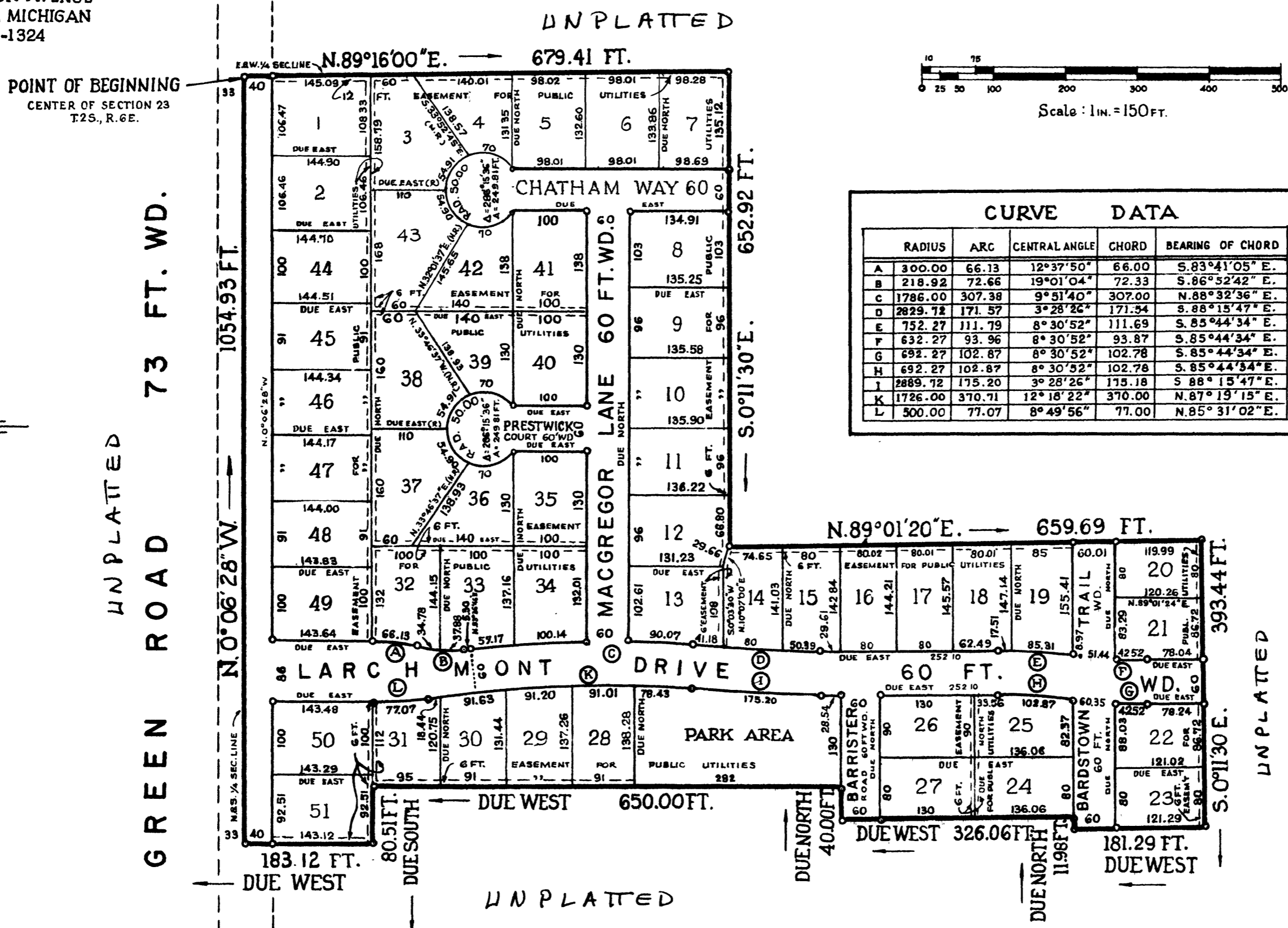
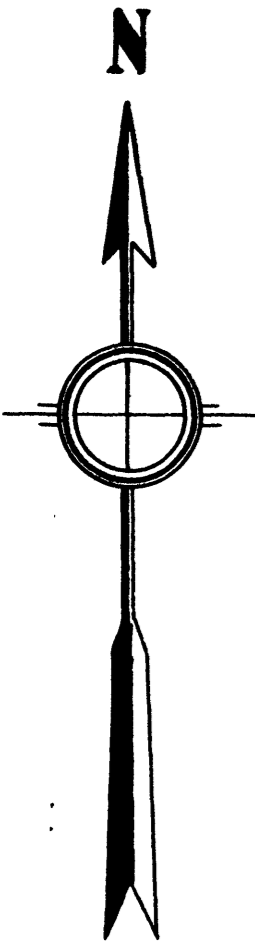


COPY

# GLACIER HIGHLANDS SUBDIVISION

OF PART OF W.1/2 OF S.E.1/4 OF SECTION 23, T.2S., R.6E.,  
 CITY OF ANN ARBOR, WASHTENAW CO., MICHIGAN.

**MASON L. BROWN & SON**  
 INCORPORATED  
 CIVIL ENGINEERS AND LAND SURVEYORS  
 120 MADISON AVENUE  
 DETROIT 26, MICHIGAN  
 WO. 1-1324



CURVE DATA				
	RADIUS	ARC	CENTRAL ANGLE	BEARING OF CHORD
A	300.00	66.13	12°37'50"	S.83°41'05" E.
B	218.92	72.66	19°01'04"	S.86°32'42" E.
C	1786.00	307.38	9°51'40"	N.88°32'36" E.
D	2829.72	171.57	3°28'26"	S.88°45'47" E.
E	752.27	111.79	8°30'52"	S.85°44'34" E.
F	632.27	93.96	8°30'52"	S.85°44'34" E.
G	692.27	102.87	8°30'52"	S.85°44'34" E.
H	692.27	102.87	8°30'52"	S.85°44'34" E.
I	2889.72	175.20	3°28'26"	S.88°45'47" E.
J	1726.00	370.71	12°18'22"	N.87°19'15" E.
K	500.00	77.07	8°49'56"	N.85°31'02" E.

NOTE:  
 DIMENSIONS HEREON ARE IN FEET AND DECIMALS THEREOF. ALL CURVILINEAR DIMENSIONS ARE SHOWN ALONG THE ARC.

CERTIFICATE OF APPROVAL BY THE CITY PLANNING COMMISSION

This plat was approved by the Planning Commission of the City of Ann Arbor, Michigan, at a meeting held on the 13 day of NOVEMBER, 1962.

*Richard A. Ware*  
 Richard A. Ware (Chairman)

*Joseph Edwards*  
 Joseph Edwards (Secretary)

**DESCRIPTION**

The land embraced in the annexed plat of "GLACIER HIGHLANDS SUBDIVISION" OF PART OF W. 1/2 OF S. E. 1/4 OF SECTION 23, T. 2 S., R. 6 E., CITY OF ANN ARBOR, WASHTENAW CO., MICHIGAN, and comprises Lots 1 to 51 inclusive and "Park Area" is described as follows: Beginning at the center of said Section 23, thence along the E. & W. 1/4 line of said section N. 89°16'00" E. 679.41 ft.; thence S. 0°11'30" E. 652.92 ft.; thence N. 89°01'20" E. 659.69 ft.; thence S. 0°11'30" E. 393.44 ft.; thence due West 181.29 ft.; thence due North 11.98 ft.; thence due West 326.06 ft.; thence due North 40.00 ft., thence due West 650.00 ft.; thence due South 80.51 ft.; thence due West 183.12 ft.; thence along the N. & S. 1/4 line of said Section 23, N. 0°06'28" W. 1054.93 ft. to the point of beginning.

**DEDICATION**

KNOW ALL MEN BY THESE PRESENTS, that we the Green Road Land Co., a Michigan Corporation by John C. Stegeman, President and Eugene E. Kurtz, Secretary as proprietors, have caused the land embraced in the annexed plat to be surveyed, laid-out and platted, to be known as "GLACIER HIGHLANDS SUBDIVISION OF PART OF W. 1/2 OF S.E. 1/4 OF SECTION 23, T. 2 S., R. 6 E., CITY OF ANN ARBOR, WASHTENAW CO., MICHIGAN," and that the streets and Park Area are hereby dedicated to the use of the public and that the easements shown on said plat are hereby reserved for the use of public utilities, subject to the regulation and control of the use there of by the local governmental authorities, and that no permanent structures are to be erected within the boundaries of said easements.

**CERTIFICATE OF MUNICIPAL APPROVAL**

I hereby certify that this plat has been approved by the City Council of the City of Ann Arbor at a regular meeting, held May 20, 1963, 1962, and is in compliance with Sec. 19a and that the width of lots is in compliance with requirements of Sec. 30, Act 172 of 1929, as amended.

*Fred J. Looker*  
 FRED J. LOOKER, City Clerk

**SURVEYORS CERTIFICATE**

I hereby certify that the Plat hereon delineated is a correct one, and that permanent monuments consisting of iron rods one-half inch in diameter and 36-inches in length, encased in concrete cylinders 4-inches in diameter and 36-inches in length, have been placed at all points marked thus (o) as thereon shown at all angles in the boundaries of the land platted, at all intersections of the lines of streets, and at intersections of the lines of streets with the boundaries of the Plat.

*Mason L. Brown*  
 Mason L. Brown  
 Registered Land Surveyor

**TAX CERTIFICATE**

OFFICE OF THE COUNTY TREASURER, WASHTENAW COUNTY, MICHIGAN

I hereby certify, That there are no tax liens or titles held by the State on the lands described above and that there are no tax liens or titles held by individuals on said lands, for the five years preceding the 31 day of May, 1962 and that the taxes for said period of five years are paid, as shown by the records of this office. This certificate does not apply to taxes, if any, now in process of collecting for Township, City or Village collecting officers.

*Sylvester A. Leonard*  
 Sylvester A. Leonard  
 County Treasurer

**COPY**

Register of Deeds  
 Washtenaw County, Mich.  
 Glacier Highlands Subdivision  
 June 7th, 1963 at 2:00 clock  
 P. M. in Room 16 of plat  
 49  
*Patricia Newkirk Hardy*  
 Register of Deeds

**WITNESSES:**

*Patricia Rhinehart* by *John C. Stegeman*  
 PATRICIA RHINEHART John C. Stegeman, President  
*Frances E. Mitchell* by *Eugene E. Kurtz*  
 FRANCES E. MITCHELL Eugene E. Kurtz, Secretary

**ACKNOWLEDGMENT**

State of Michigan) ss.  
 County of Washtenaw

On this 12th day of November, 1962, before me, a Notary Public in and for said County, appeared John C. Stegeman, President and Eugene E. Kurtz, Secretary, to me personally known who being each by me duly sworn, did say that they are the President and Secretary, respectively of Green Land Co., a Michigan Corporation, and that said dedication was signed in behalf of said Corporation by authority of its Board of Directors, and the said John C. Stegeman and Eugene E. Kurtz, acknowledged said instrument to be the free act and deed of said Corporation.

My commission expires Oct. 23, 1965  
*Frances E. Mitchell*  
 FRANCES E. MITCHELL  
 Notary Public, Washtenaw County

**APPROVAL BY COUNTY PLAT BOARD**

This plat was approved on the 6th day of June, 1963 by the Washtenaw County Plat Board.

*Patricia Newkirk Hardy* (County Register of Deeds)  
*John F. Flook* (County Drain Commissioner)  
*J. Martin Remp* (Auditor)  
*John P. Cook* (Auditor)  
*Herbert G. Loeffler* (Auditor)