

"ROBIN HILLS SUBDIVISION OF VESPER HEIGHTS"

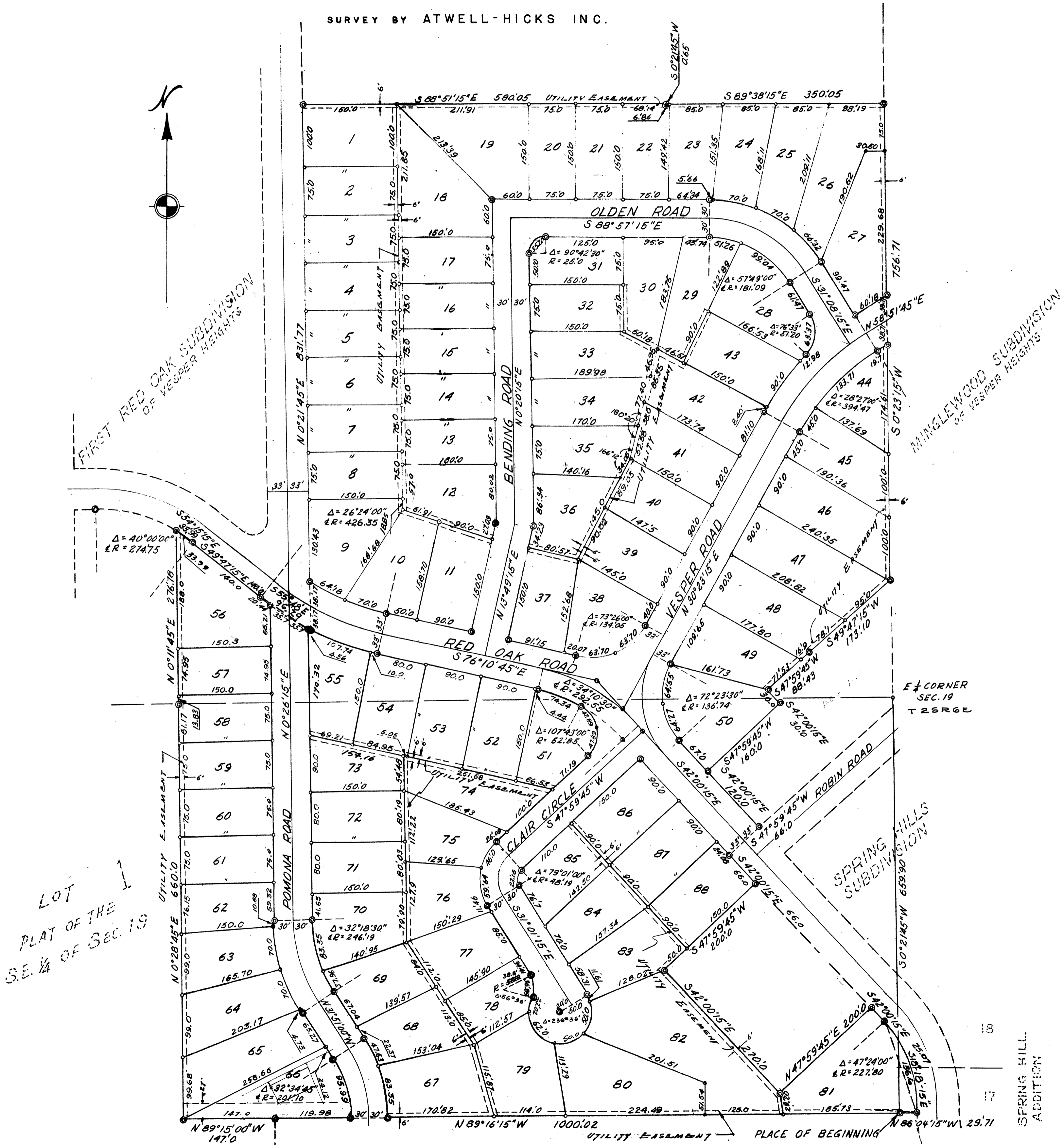
A SUBDIVISION OF
PARTS OF LOTS 17 & 18 OF "SPRING HILL ADDITION" TO THE CITY OF ANN ARBOR
AND
PART OF LOT 1 OF THE "PLAT OF THE S.E. 1/4 OF SECTION 19"
AND
PART OF THE S.E. 1/4 OF THE N.E. 1/4 OF SECTION 19

TOWN 2 SOUTH RANGE 6 EAST
CITY OF ANN ARBOR WASHTENAW COUNTY MICHIGAN
SCALE: 1" = 100'



ALL DIMENSIONS IN FEET AND DECIMALS THEREOF
ALL CURVE DISTANCES MEASURED ON THE CHORD
EXCEPT AS OTHERWISE NOTED

SURVEY BY ATWELL-HICKS INC.



LOT 1
PLAT OF THE
S.E. 1/4 OF SEC. 19

SURVEYED BY
ATWELL-HICKS INC.
ANN ARBOR, MICHIGAN

NORTHWOOD

