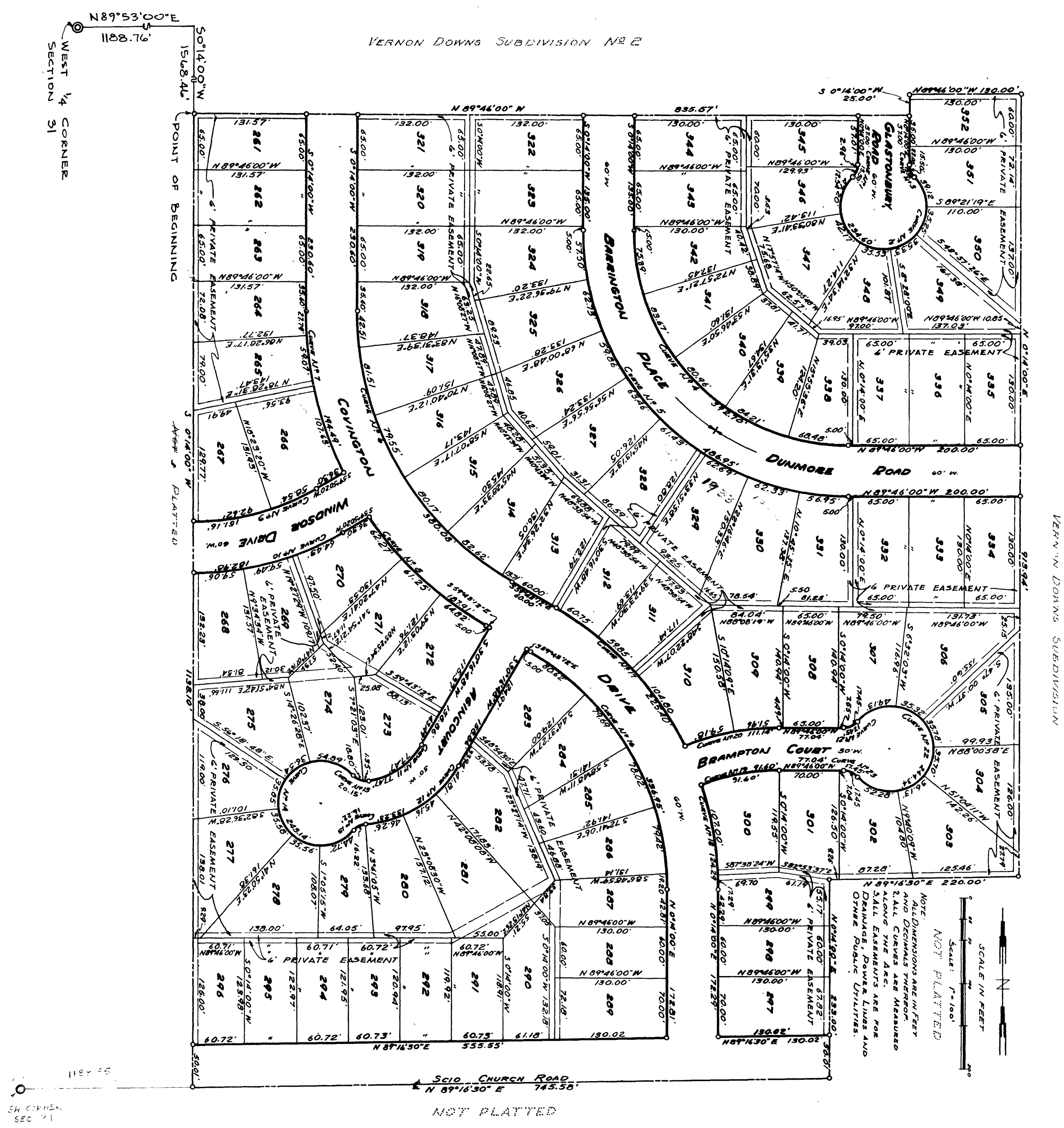


"VERNON DOWNS SUBDIVISION NO. 3"

A SUBDIVISION IN THE SOUTHWEST QUARTER OF SECTION 31, T2S, R6E,
CITY OF ANN ARBOR, WASHTENAW COUNTY, MICHIGAN.



CURVE NO.	RADIUS	TANGENT DISTANCE	DEGREE OF CURVE	DELTA ANGLE	LONG CHORD BEARING	LONG CHORD LENGTH	CURVE NO.	RADIUS	TANGENT DISTANCE	DEGREE OF CURVE	DELTA ANGLE	LONG CHORD BEARING	LONG CHORD LENGTH
1	20.00'	8.17'	44°24'55"	44°24'55"	N22°24'28"E	15.18'	13	20.00'	11.02'	57°42'46"	57°42'46"	N63°25'13"W	19.30'
2	20.00'	8.17'	44°24'55"	44°24'55"	S89°44'20"E	15.18'	14	20.00'	8.98'	40°20'22"	40°20'22"	S0°50'41"E	15.76'
3	20.00'	8.17'	44°24'55"	44°24'55"	N21°58'28"W	15.18'	15	20.00'	8.98'	40°20'22"	40°20'22"	S45°08'44"W	15.76'
4	250.00'	250.00'	90°00'00"	90°00'00"	S44°46'00"E	358.55'	16	322.01'	185.74'	17°47'35"	17°47'35"	S29°44'36"E	321.78'
5	310.00'	310.00'	90°00'00"	90°00'00"	S44°46'00"E	438.41'	17	382.01'	116.01'	14°59'55"	14°59'55"	S24°48'27"E	228.14'
6	363.23'	209.31'	13°46'26"	59°57'12"	S29°44'36"E	362.97'	18	382.01'	62.70'	14°59'55"	14°59'55"	S3°05'15"E	123.74'
7	423.23'	99.00'	13°32'16"	26°19'47"	S12°55'54"E	192.79'	19	234.36'	46.39'	24°28'32"	24°28'32"	S2°23'37"E	91.02'
8	423.23'	99.00'	13°32'16"	26°19'47"	S44°58'22"E	186.77'	20	284.36'	36.29'	20°08'37"	20°08'37"	N79°02'11"E	110.46'
9	284.36'	77.40'	20°08'37"	30°28'40"	S75°02'10"W	149.39'	21	20.00'	8.98'	40°20'22"	40°20'22"	N65°14'05"E	16.90'
10	344.36'	93.70'	16°38'37"	30°28'40"	S75°02'10"W	180.85'	22	20.00'	8.98'	40°20'22"	40°20'22"	N0°14'00"E	16.90'
11	86.23'	41.57'	66°30'37"	51°28'30"	S56°01'03"W	74.89'	23	20.00'	8.98'	40°20'22"	40°20'22"	N64°46'03"W	16.90'
12	136.23'	72.49'	42°01'29"	56°02'07"	S58°17'32"W	127.99'							

"VERNON DOWNS SUBDIVISION NO. 3"

A SUBDIVISION IN THE SOUTHWEST QUARTER OF SECTION 31, T2S, R6E,
CITY OF ANN ARBOR, WASHTENAW COUNTY, MICHIGAN.

CERTIFICATE OF APPROVAL BY THE CITY PLANNING COMMISSION

This plat was approved by the Planning Commission of the City of Ann Arbor, Michigan, at a meeting held on the 26 day of August, 1958.

Paul G. Kauper
Paul G. Kauper, Chairman
John E. Swisher, Jr.
John E. Swisher, Jr., Secretary

CITY CLERK'S CERTIFICATE

I hereby certify that the width and depth of lots shown on this plat conform with the rules and regulations of the City of Ann Arbor and the requirements of Section 30, Act 172, P.A. 1929, as amended by Act 186, P.A. 1954.

Fred J. Lofker
Fred J. Lofker, Clerk

ATTORNEY'S OPINION

I hereby certify from an examination of the abstract to the above described land that there are no rights, including mineral rights, other than in the parties joining in the Dedication.

Paul L. Proud, Jr.
Paul L. Proud, Jr., Attorney
Dated this 12th day of August, 1958.

APPROVAL BY COUNTY PLAT BOARD

This plat was approved on the 13th day of November, 1958, by the Washtenaw County Plat Board.

Patricia N. Hardy
Patricia N. Hardy, County Register of Deeds
J. Martin Rempp
J. Martin Rempp, Auditor
Carl C. Chandler
Carl C. Chandler, Auditor
Herbert G. Loeffler
Herbert G. Loeffler, Auditor

COUNTY TREASURER'S CERTIFICATE

Office of County Treasurer
Washtenaw County

I hereby certify that there are no tax liens or titles held by the State on the lands described hereon and that there are no tax liens or titles held by individuals on said lands for five years preceding the 25th day of August, 1958, and that the taxes for said period of five years are paid, as shown by the records of this office. This Certificate does not apply to taxes, if any, now in process of collection by Township, City or Village collecting officers.

W. F. Verner
W. F. Verner, County Treasurer

MUNICIPAL APPROVAL

This plat was approved by the Common Council of the City of Ann Arbor at a meeting held on Oct 6 1958.

Fred J. Lofker
Fred J. Lofker, Clerk

DEDICATION

KNOW ALL MEN BY THESE PRESENTS that we

Ernest A. G. Schenk and Rigmor M. Schenk, his wife;

Elgin Schenk and Esther Schenk, his wife
Lee F. Schenk and Alma Schenk, his wife
Milda Parker

By: Ernest A. G. Schenk, their Attorney-in-fact
The Vernon Development Company, a Michigan Corporation
By: George V. Airey, President

The Ann Arbor Trust Company
By: Earl H. Cress, President, and
Pearl I. Manning, Secretary

as proprietors, have caused the land embraced in the annexed plat to be surveyed, laid out and platted to be known as VERNON DOWNS SUBDIVISION NO. 3, a subdivision in the southwest quarter of Section 31, T2S, R6E, City of Ann Arbor, Washtenaw County, Michigan, and that the roads, boulevards, and places as shown on said plat are hereby dedicated to the use of the public.

Richard F. Heusel Ernest A. G. Schenk (L.S.)
Richard F. Heusel Ernest A. G. Schenk

E. Maude Weeks Rigmor M. Schenk (L.S.)
E. Maude Weeks Rigmor M. Schenk

George V. Airey Ernest A. G. Schenk
George V. Airey Ernest A. G. Schenk, as attorney-in-fact
for: Elgin Schenk
Esther Schenk
Lee F. Schenk
Alma Schenk
Milda Parker

VERNON DEVELOPMENT CORPORATION

George V. Airey
By: George V. Airey, President
ANN ARBOR TRUST COMPANY

Earl H. Cress
By: Earl H. Cress, President
PEARL I. MANNING, SECRETARY

ACKNOWLEDGMENT

STATE OF MICHIGAN) ss.
COUNTY OF WASHTENAW)

On this 21st day of August, 1958, before me E. Maude Weeks a Notary Public in and for said County, personally came the above named

Ernest A. G. Schenk, and
Rigmor M. Schenk, his wife

known to me to be the persons who executed the above Dedication and acknowledged the same to be their free act and deed; and

Ernest A. G. Schenk

to me known to be the person who executed the foregoing instrument in behalf of

Elgin Schenk, and
Esther Schenk, his wife;
Lee F. Schenk, and
Alma Schenk, his wife;
Milda Parker

and
George V. Airey
Earl H. Cress
Pearl I. Manning

to me personally known, who being by me duly sworn say that they are, respectively, the President of the Vernon Development Company, a Michigan Corporation, and President and Secretary of the Ann Arbor Trust Company, a Michigan Corporation, and that the seals affixed to said instrument are the corporate seals of said corporations and that said instrument was signed and sealed in behalf of said corporations by authority of their Boards of Directors and the said George V. Airey, Earl H. Cress & Pearl I. Manning acknowledged said instrument to be the free act and deed of the said corporations.

DESCRIPTION OF LAND PLATTED

The land embraced in the annexed plat "VERNON DOWNS SUBDIVISION NO. 3", a subdivision in the Southwest quarter of Section 31, T2S, R6E, City of Ann Arbor, Washtenaw County, Michigan, containing lots numbered 261 through 352, inclusive, as described as follows:

Beginning at a point which is North 89° 53' 00" East, 1186.76 feet, and South 0° 14' 00" West, 1568.46 feet from the West 1/4 corner of said Section 31, and traversing:

THENCE South 0° 14' 00" West, 1138.10 feet to the southerly line of said Section 31 (said southerly line of Section 31 also being the centerline of Scio Church Road);

THENCE North 89° 16' 30" East, 745.58 feet along said centerline of Scio Church Road;

THENCE North 0° 14' 00" East, 233.00 feet;

THENCE North 89° 16' 30" East, 220.00 feet;

THENCE North 0° 14' 00" East, 913.94 feet;

THENCE North 89° 46' 00" West, 130.00 feet;

THENCE South 0° 14' 00" West, 25.00 feet;

THENCE North 89° 46' 00" West, 835.57 feet

to the point of beginning, containing 92 lots.

SURVEYOR'S CERTIFICATE

I hereby certify that the plat hereon delineated is a correct one and that permanent metal monuments consisting of bars not less than one-half inch in diameter and 36 inches in length, encased in a concrete cylinder at least four inches in diameter and 36 inches in depth have been placed at points marked thus (O) as thereon shown at all angles in the boundaries of the land platted, at all the intersections of streets, and at the intersections of streets and alleys with the boundaries of the plat as shown on said plat. All dimensions are given in feet and decimals thereof.

W. G. Lanterman
W. G. Lanterman, R.L.S.
Michigan Registration #5182

Washenaw
Vernon Downs
Subdivision No. 3
who executed this 21st day of August, 1958
Patricia N. Hardy
Patricia N. Hardy, Register of Deeds

I hereby certify this copy to be a true copy of the plat forwarded the Register of Deeds for recording.

Date December 10, 1958

FILED IN AUDITOR GENERAL'S DEPT.

Date December 17, 1958

EXAMINED AND APPROVED

Date December 18, 1958

D. L. Mearns
D. L. Mearns, Auditor General