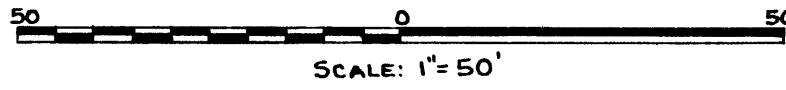


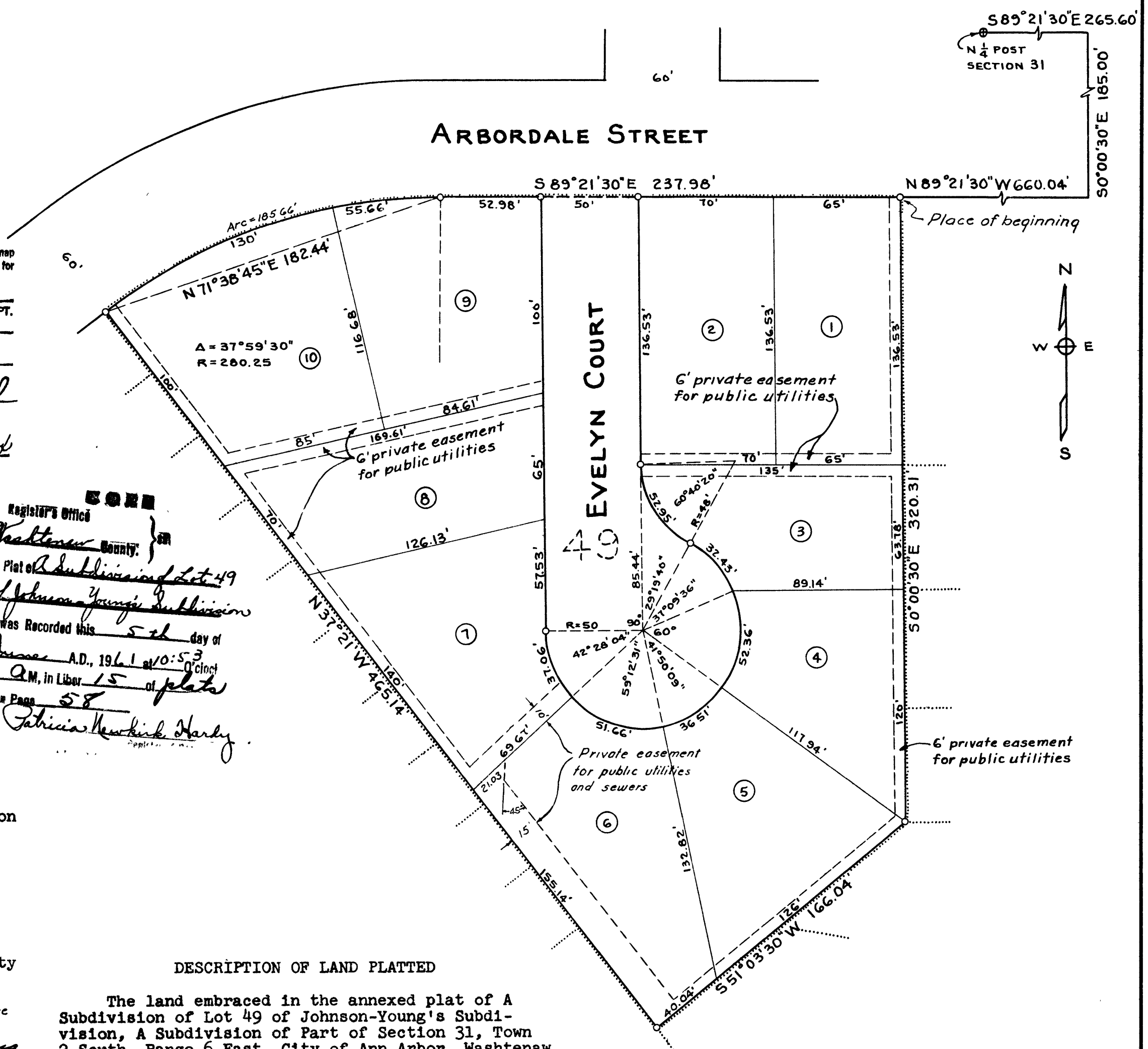
# A SUBDIVISION OF LOT 49 OF JOHNSON-YOUNG'S SUBDIVISION

A SUBDIVISION OF PART OF SECTION 31, TOWN 2 SOUTH, RANGE 6 EAST,  
CITY OF ANN ARBOR, WASHTENAW COUNTY, MICHIGAN



NOTE: ALL DIMENSIONS ARE IN FEET AND DECIMALS THEREOF.  
ALL CURVED LOT DIMENSIONS ARE ARC LENGTHS.

SURVEY BY  
McNAMEE PORTER AND SEELEY  
ANN ARBOR, MICHIGAN



I hereby certify this copy is a true copy of map or plat forwarded the Register of deeds for recording.  
Date June 2, 1961  
FILED IN AUDITOR GENERAL'S DEPT.  
Date June 6, 1961  
EXAMINED AND APPROVED  
Date June 2, 1961  
*Otis M. Smith*  
OTIS M. SMITH  
AUDITOR GENERAL  
By *Richard E. Lomas*  
Richard E. Lomas - Plat Examiner

Register's Office  
Washtenaw County  
Plat of A Subdivision of Lot 49  
of Johnson-Young's Subdivision  
was Recorded this 5th day of  
June A.D., 1961 at 10:53 O'Clock  
A.M., in Liber 15 of Plats  
Page 58  
*Patricia Newkirk Hardy*

### DEDICATION

KNOW ALL MEN BY THESE PRESENTS That we Eugene R. Young and Evelyn L. Young, his wife, John Johnson Cons., Inc., a Michigan Corporation by John C. Johnson, President and Richard P. Whitker, Secretary, as proprietors; Clara P. Whitker, a married woman, Bert R. Foster and Esther M. Foster, his wife, as mortgagees, have caused the land embraced in the annexed plat to be surveyed, laid out and platted, to be known as "A Subdivision of Lot 49 of Johnson-Young's Subdivision, A Subdivision of Part of Section 31, Town 2 South, Range 6 East, City of Ann Arbor, Washtenaw County, Michigan, and that the streets as shown on said plat are hereby dedicated to the use of the public. No permanent structure shall be erected within the easements shown

### DESCRIPTION OF LAND PLATTED

The land embraced in the annexed plat of A Subdivision of Lot 49 of Johnson-Young's Subdivision, A Subdivision of Part of Section 31, Town 2 South, Range 6 East, City of Ann Arbor, Washtenaw County, Michigan, being a replat of lot 49 of Johnson-Young's Subdivision is described as follows:

Commencing at the north quarter post of Section 31, Town 2 South, Range 6 East; thence S 89°-21'-30" E 265.60 feet; thence S 0°-00'-30" E 185.00 feet; thence N 89°-21'-30" W 660.04 feet for a place of beginning; thence S 0°-00'-30" E 320.31 feet; thence S 51°-03'-30" W 166.04 feet; thence N 37°-21' W 465.14 feet; thence 185.66 feet in the arc of a circular curve, concave to the south with a central angle of 37°-59'-30" and a radius of 280.25 feet to a point to which the long chord bears N 71°-38'-45" E 182.44 feet; thence S 89°-21'-30" E 237.98 feet to the place of beginning: This subdivision contains 10 lots numbered 1 through 10.

### COUNTY TREASURER'S CERTIFICATE

Office of County Treasurer  
Washtenaw County, Michigan

I hereby certify that there are no tax liens or titles held by the State on the lands described hereon and that there are no tax liens or titles held by individuals on said lands for five years preceding the 22nd day of May, 1961, and that the taxes for said period of five years are paid, as shown by the records of this office. This Certificate does not apply to taxes, if any, now in process of collection by Township or City collecting officers.

*W. F. Verner*  
W. F. Verner (County Treasurer)

### APPROVAL BY COUNTY PLAT BOARD

This plat was approved on the 25th day of May, 1961, by the Washtenaw County Plat Board.

*Patricia Newkirk Hardy*  
Patricia Newkirk Hardy  
(County Register of Deeds)  
*J. Martin Rempp*  
J. Martin Rempp (Auditor)  
*John P. Cook*  
John P. Cook (Auditor)  
*Herbert G. Koefler*  
Herbert G. Koefler (Auditor)  
*John H. Flook*  
John H. Flook (Drain Commissioner)

I hereby certify that the width and depth of the lots conforms to Section 30, Act No. 186, P. A. 1954.

*Fred J. Looker*  
Fred J. Looker (Clerk)

### CERTIFICATE OF APPROVAL BY THE CITY PLANNING COMMISSION

This plat was approved by the Planning Commission of the City of Ann Arbor, Michigan, at a meeting held on the 25th day of April, 1961.

*Richard A. Ware*  
Richard A. Ware (Chairman)

*William J. Bott*  
William J. Bott (Secretary)

### MUNICIPAL APPROVAL

This plat was approved by the Council of the City of Ann Arbor at a meeting held on May 1, 1961.

*Fred J. Looker*  
Fred J. Looker (Clerk)

### SURVEYOR'S CERTIFICATE

I hereby certify that the plat hereon delineated is a correct one and that permanent metal monuments consisting of bars not less than one-half inch in diameter and 36 inches in length, encased in a concrete cylinder at least four inches in diameter and 36 inches in depth have been placed at points marked thus (o) as thereon shown at all angles in the boundaries of the land platted, at all the intersections of streets and alleys with the boundaries of the plat as shown on said plat. All dimensions are given in feet and decimals thereof.

*M. R. Van Eyck*  
M. R. Van Eyck, Registered

### ACKNOWLEDGMENT

STATE OF MICHIGAN )  
COUNTY OF WASHTENAW ) ss.

On this 5th day of April, 1961, before me a Notary Public in and for said County, personally came the above named Eugene R. Young, Evelyn L. Young, his wife, Bert R. Foster and Esther M. Foster, his wife, and Clara P. Whitker, a married woman, known to me to be the persons who executed the above dedication and acknowledged the same to be their free act and deed.

John C. Johnson and Richard R. Whitker to me personally known, who being each by me duly sworn did say that they are the President and Secretary respectively of John Johnson Cons., Inc., a Michigan Corporation, and that the seal affixed to said instrument is the corporate seal of said corporation and that said instrument was signed and sealed in behalf of said corporation by authority of its Board of Directors and the said John C. Johnson and Richard P. Whitker acknowledged said instrument to be the free act and deed of said corporation.

*Ethel B. Arehart*  
Ethel B. Arehart  
Notary Public  
Washtenaw County,  
Michigan

My Commission expires May 18, 1963.