

**CERTIFICATE OF APPROVAL BY BOARD OF COUNTY ROAD COMMISSIONERS**

This plat has been examined and was approved on the 10 day of Sept 1954 by the Washtenaw County Board of Road Commissioners

*James C. Hendley* Chairman  
*Raymond P. Koch* Member  
*H.L. Frisinger* Member

**CERTIFICATE OF APPROVAL BY COUNTY BOARD**

This plat was approved on the 14th day of September 1954 by the Washtenaw Co. Plat Board.

*Thomas A. Fitzgerald* Register of Deeds  
*J. Martin Bernpp* County Auditor  
*Adolph F. Gross* County Auditor  
*Herbert G. Loeffler* County Auditor

**APPROVAL BY COUNTY PLANNING COMMISSION**

This plat was approved by the Planning Commission of Washtenaw County, Michigan at a meeting held on the 11th day of September 1954.

*Leigh Beach* Chairman  
*John W. Hyde* Member

**COUNTY TREASURER'S CERTIFICATE RELATING TO TAXES**

(Sec. 135, Act 206, 1893, as amended - Sec. 4134, C.L. 1915)  
 Office of County Treasurer, Washtenaw County.  
 I hereby certify that there are no tax liens or titles held by the State on the lands described hereon, and that there are no tax liens or titles held by individuals on said lands for the five years preceding the 9th day of September 1954 and that the taxes for said period of five years are paid, as shown by the records of this office.  
 This certificate does not apply to taxes, if any now in process of collection by township, city or village collecting officers

*W. F. Verner* County Treasurer

RECEIVED FOR RECORD  
 SEP 24 9 41 AM '54  
 THOMAS A. FITZGERALD  
 REGISTER OF DEEDS  
 WASHTENAW COUNTY, MICH.

See Liber 678 Page 563  
**CERTIFICATE OF MUNICIPAL APPROVAL**  
 This plat was approved by the Township Board of Ann Arbor Township of Washtenaw County at a meeting held on the 12th day of Sept 1954

*Ray F. Hurster* Clerk

EXAMINED AND APPROVED  
 Date SEP 23 1954

*John B. Martin* Public Engineer

**"HILLWOOD SUBDIVISION NO. 3"**  
 A part of the S.W. 1/4 and S.E. 1/4 of Sec. 27, T.25, R.6E., Ann Arbor Township, Washtenaw County, Michigan

**DEDICATION**

KNOW ALL MEN BY THESE PRESENTS That I, Jessie E. Bourquin, a widow, as proprietor, have caused the land embraced in the annexed plat to be surveyed, laid out and platted, to be known as "HILLWOOD SUBDIVISION NO. 3", a part of the S.W. 1/4 and S.E. 1/4 of Sec. 27, T.25, R.6E., Ann Arbor Township, Washtenaw County, Michigan and that the streets and alleys as shown on said plat are hereby dedicated to the use of the public, except where shown for use of the lot owners only, and that the utility easements as indicated on said plat are hereby reserved for the use of public utilities and that no permanent structures are to be erected within the lines of said easements.

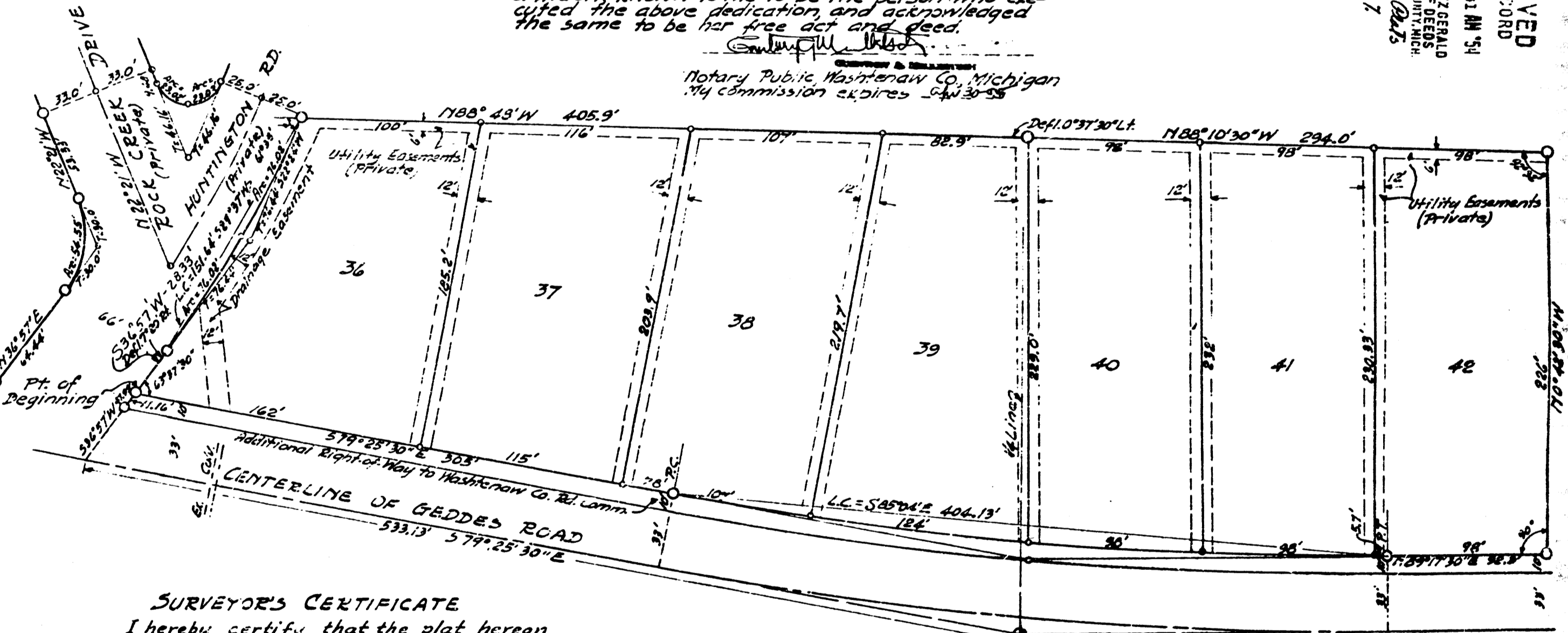
Signed and Sealed in Presence of  
*John R. Meadows* Notary Public  
*Jessie E. Bourquin*  
*Jessie E. Bourquin*

**DESCRIPTION**

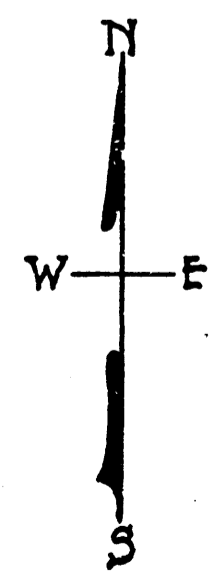
The land embraced in the annexed plat of "Hillwood Subdivision No. 3", a part of the S.W. 1/4 and S.E. 1/4 of Sec. 27, T.25, R.6E., Ann Arbor Township, Washtenaw County, Michigan, is described as follows:  
 Beginning at a point on the north side of Geddes Rd. said point being on a bearing of N 79° 25' 30" W 533.13' and on a bearing of N 36° 57' E 47.99' from the S.W. Post of said Sec. 27, thence on a bearing of N 79° 25' 30" E 308.5, thence on a bearing of 579° 25' 30" E 308.5, thence along the long chord of a curve, whose radius is 2055.50' on a bearing of S 85° 04' E 404.13', thence on a bearing of N 89° 17' 30" E 92.3, thence on a bearing of N 89° 17' 30" W 224, thence on a bearing of N 88° 48' W 405.9, thence along the long chord on a bearing of S 29° 37' W 151.64, thence on a bearing of S 36° 57' W 28.33, to the point of beginning.

STATE OF MICHIGAN } 55.  
 COUNTY OF WASHTENAW }  
 On this 14th day of Sept 1954, before me a Notary Public in and for said county, personally came the above named Jessie E. Bourquin, a widow known to me to be the person who executed the above dedication and acknowledged the same to be her free act and deed.  
 Notary Public, Washtenaw Co., Michigan  
 My Commission expires Jan 30-55

RECEIVED FOR RECORD  
 SEP 24 9 41 AM '54  
 THOMAS A. FITZGERALD  
 REGISTER OF DEEDS  
 WASHTENAW COUNTY, MICH.  
 Date 12/1/54



**SURVEYOR'S CERTIFICATE**  
 I hereby certify that the plat hereon delineated is a correct one and that permanent metal monuments consisting of bars not less than one-half inch in diameter and 36 inches in length, or shorter bars of not less than one-half inch in diameter lapped over each other at least 6 inches with an over-all length of not less than 36 inches, encased in a concrete cylinder at least 4 inches in diameter and 36 inches in depth have been placed at points marked thus (O) as thereon shown at all angles in the boundaries of the land platted, at all the intersections of streets, intersections of alleys, or of streets and alleys, and at the intersections of streets and alleys with the boundaries of the plat as shown on said plat.  
*G. A. Steadman*  
 Registered Land Surveyor G. A. Steadman



- A = 11° 17' LT
- D = 2° 47' 15"
- R = 2055.50'
- T = 203.05'
- E = 10.00'
- L = 404.79'

Note: All dimensions are given in feet and decimals thereof.

