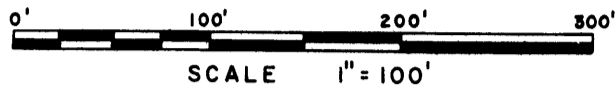


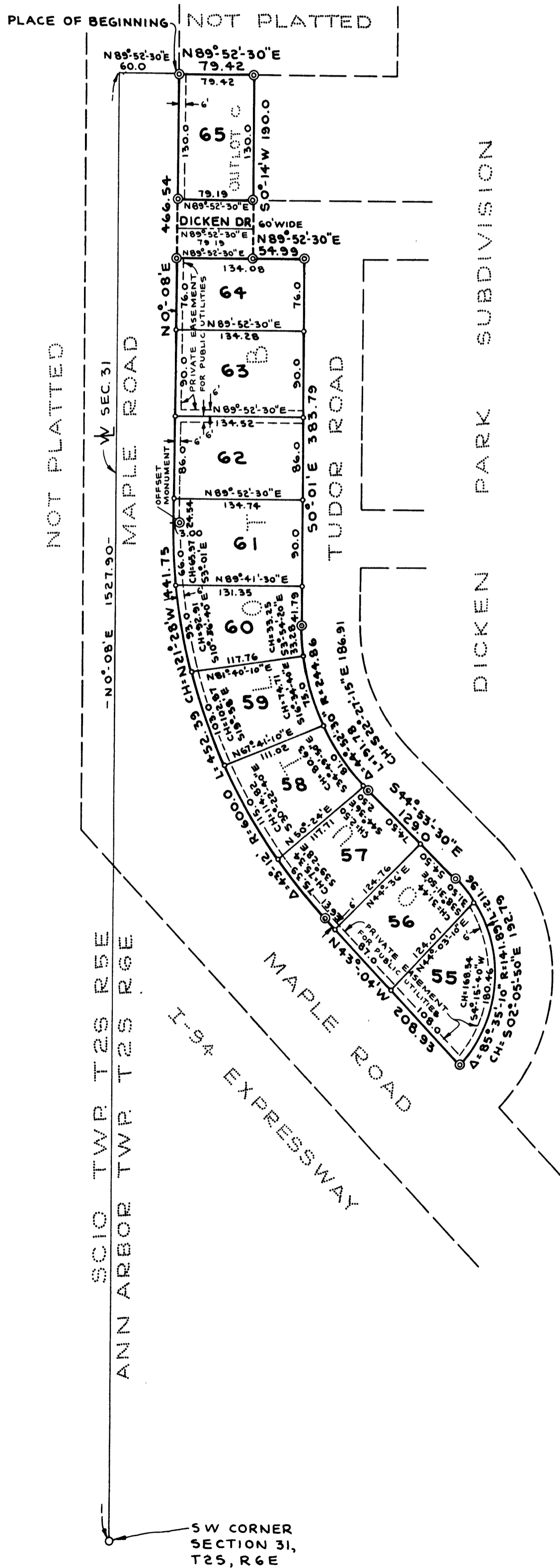
COPY

DICKEN PARK SUBDIVISION NO. 2

A SUBDIVISION OF PART OF THE SW 1/4 OF SECTION 31, T2S, R6E,
 CITY OF ANN ARBOR, WASHTENAW COUNTY, MICHIGAN;
 BEING A REPLAT OF OUTLOTS "B" AND "C" AND PART OF
 DICKEN DRIVE OF DICKEN PARK SUBDIVISION



ALL DIMENSIONS IN FEET AND DECIMALS THEREOF
 ALL DIMENSIONS ON CURVES ARE ARC LENGTHS
 PREPARED AND DRAFTED BY ATWELL-HICKS, INC.
 114 NORTH FIRST ST. ANN ARBOR, MICHIGAN
 ZIP CODE 48106



COPY

DICKEN PARK SUBDIVISION NO. 2

A SUBDIVISION OF PART OF THE SW 1/4 OF SECTION 31, T2S, R6E,
CITY OF ANN ARBOR, WASHTENAW COUNTY, MICHIGAN;
BEING A REPLAT OF OUTLOTS "B" AND "C" AND PART OF
DICKEN DRIVE OF DICKEN PARK SUBDIVISION

PREPARED AND DRAFTED BY ATWELL-HICKS, INC.
114 NORTH FIRST ST. ANN ARBOR, MICHIGAN
ZIP CODE 48108

DEDICATION

KNOW ALL MEN BY THESE PRESENTS, that we, Storm-Ziga-Spaly Development Company, Inc., a Michigan Corporation by Arthur A. Storm President, and John Ziga Sr. Secretary, and the City of Ann Arbor a Michigan Municipal Corporation by Wendell E. Hulcher Mayor, and John P. Bentley Clerk as proprietors have caused the land embraced in the annexed plat to be surveyed, laid out and platted to be known as DICKEN PARK SUBDIVISION NO. 2 a subdivision of part of the SW 1/4 of Section 31, T2S, E6E, City of Ann Arbor, Washtenaw County, Michigan; being a replat of Outlots "B" and "C" and part of Dicken Drive of Dicken Park Subdivision and that the Drive as shown on said plat is hereby dedicated to the use of the public and the easements indicated on said plat are not dedicated to the public but reserved for public utilities and any other use designated hereon and no permanent structures are to be located within said easement, and that access to all lots will be from Dicken Drive and Tudor Drive only.

Signed in the Presence of: STORM-ZIGA-SPALY DEVELOPMENT COMPANY, INC.

Sheila F. Steel Witness
Barbara J. Gordon Witness

Arthur A. Storm, President
321 South Main Street
Ann Arbor, Michigan
John Ziga Sr. Secretary
321 South Main Street
Ann Arbor, Michigan

Signed and Sealed in the Presence of:

Jerome D. Farmer II Witness
Geraldine M. Koeller Witness

Wendell E. Hulcher, Mayor
City Hall
Ann Arbor, Michigan
John P. Bentley, Clerk
City Hall
Ann Arbor, Michigan

ACKNOWLEDGMENT

STATE OF MICHIGAN)
County of Washtenaw) ss.

On this 22 day of April A.D., 1968 before me, a Notary Public in and for said county appeared Arthur A. Storm and John Ziga Sr. to me personally known, who being each by me duly sworn did say that they are the President and Secretary respectively of the Storm-Ziga-Spaly Development Company, Inc., a Michigan Corporation, and that said instrument was signed in behalf of said Corporation by authority of its Board of Directors and the said Arthur A. Storm and John Ziga Sr. acknowledged said instrument to be the free act and deed of said Corporation.

Sheila Fawn LaDux (Steel)
Notary Public, Washtenaw County, Michigan

My Commission expires August 16, 1969

ACKNOWLEDGMENT

STATE OF MICHIGAN)
County of Washtenaw) ss.

On this 1st day of July A.D., 1968 before me, a Notary Public in and for said county appeared Wendell E. Hulcher and John P. Bentley to me personally known, who being each by me duly sworn did say that they are the Mayor and Clerk respectively of the City of Ann Arbor a Michigan Municipal Corporation, and that the seal affixed to said instrument is the corporate seal of said corporation and that said instrument was signed and sealed in behalf of said corporation by authority of its Council and the said Wendell E. Hulcher and John P. Bentley acknowledged said instrument to be the free act and deed of said corporation.

Jerome D. Farmer II
Notary Public, Washtenaw County, Michigan

My Commission expires Oct. 24, 1969

CERTIFICATE OF MUNICIPAL APPROVAL

This plat was approved by the Common Council of the City of Ann Arbor at a meeting held... 1968... and is in compliance with Section 19a and that the width of lots conforms with requirements of Section 30, Act 172, of 1929, as amended.

John P. Bentley, Clerk

COUNTY TREASURER'S CERTIFICATE
Office of County Treasurer, Washtenaw County

I hereby certify that there are no tax liens or titles held by the State on the lands described hereon, and that there are no tax liens or titles held by individuals on said lands, for the five years preceding the 1st day of April 1968, and that the taxes for said period of five years are all paid as shown by the records of this office. This certificate does not apply to taxes, if any, now in process of collection by township, city or village collecting officers.

Sylvester A. Leonard, County Treasurer

CERTIFICATE OF APPROVAL BY THE CITY PLANNING COMMISSION

This plat was approved by the Planning Commission of the City of Ann Arbor, Michigan at a meeting held on the 11th day of June 1968

Keith F. Weiland, Chairman
Claude L. Johnson, Vice-Chairman
Robert B. Kerschbaum, Secretary

APPROVAL BY COUNTY PLAT BOARD

This plat was approved on the 31st day of July 1968 by the Washtenaw County Plat Board.

Patricia Newkirk Hardy, County Register of Deeds

J. Martin Rempp, Auditor

John H. Flook, County Drain Commissioner

Herbert G. Loeffler, Auditor

John P. Cook, Auditor

DESCRIPTION OF LAND PLATTED

The land embraced in the annexed plat of DICKEN PARK SUBDIVISION NO. 2 a subdivision of part of the SW 1/4 of Section 31, T2S, R6E, City of Ann Arbor, Washtenaw County, Michigan; being a replat of Outlots "B" and "C" and part of Dicken Drive of Dicken Park Subdivision is described as follows: Commencing at the southwest corner of Section 31, T2S, R6E, Ann Arbor Township, Washtenaw County, Michigan; thence N 0°-08' E 1527.90 feet along the west line of said section; thence N 89°-52'-30" E 60.0 feet for a PLACE OF BEGINNING; thence N 89°-52'-30" E 79.42 feet; thence S 0°-14' W 190.0 feet; thence N 89°-52'-30" E 54.99 feet; thence S 0°-01' E 383.79 feet; thence 191.78 feet along the arc of a circular curve concave to the Northeast, radius 244.86 feet, chord S 22°-27'-15" E 186.91 feet; thence S 44°-53'-30" E 129.0 feet; thence 211.96 feet in the arc of a circular curve concave to the West, radius 141.89 feet, chord S 2°-05'-50" E 192.79 feet; thence N 43°-04' W 208.93 feet; thence 452.39 feet along the arc of a circular curve concave to the Northeast, radius 600.0 feet, chord N 21°-28' W 441.75 feet; thence N 0°-08' E 466.54 feet to the Place of Beginning, containing 11 lots numbered 55 through 65 inclusive.

SURVEYOR'S CERTIFICATE

I hereby certify that the plat hereon delineated is a correct one and that permanent metal monuments consisting of bars not less than one-half inch in diameter and 36 inches in length, or shorter bars of not less than one-half inch in diameter lapped over each other at least 6 inches with an over-all length of not less than 36 inches, encased in a concrete cylinder at least 4 inches in diameter and 36 inches in depth have been placed at points marked thus (C) as thereon shown at all angles in the boundaries of the land platted, at all the intersections of streets, intersections of alleys, or of streets and alleys, and at the intersection of streets and alleys with the boundaries of the plat as shown on said plat.

Allen R. Suggitt, Registered Engineer No. 12414
114 North First Street, Ann Arbor, Michigan
ZIP CODE 48108

Certified true copy of the plat recorded Sept 30, 1968, at 10:19 A.M. in Liber 19 of plats on page 37 and 38 by Patricia Newkirk Hardy, Register of Deeds, Sandra A. Neal, Deputy

Allison Green, State Treasurer
Richard E. Loman, Plat Examiner
Date October 14, 1968