

2nd Copy

"ASSESSOR'S PLAT NO 25

REPLAT OF THE PRIVATE PARK OF
HAMILTON, ROSE AND SHEEHAN ADDITION"

CITY OF ANN ARBOR, WASHTENAW CO, MICHIGAN.

SCALE 1"=50'

Mar 17-1932
J. B. Hume

1 OF 1
03/18/1932
ASSESSOR'S PLAT NO. 25
SHEET 9

CERTIFICATE OF APPROVAL BY BOARD OF COUNTY AUDITORS

Approved by the Board of County Auditors of Wash-
tenaw County, Michigan this 26 day of
Feb 1932
H. O. Cushing
Chairman
William M. Fowler
Oliver L. Brown

CERTIFICATE OF MUNICIPAL APPROVAL

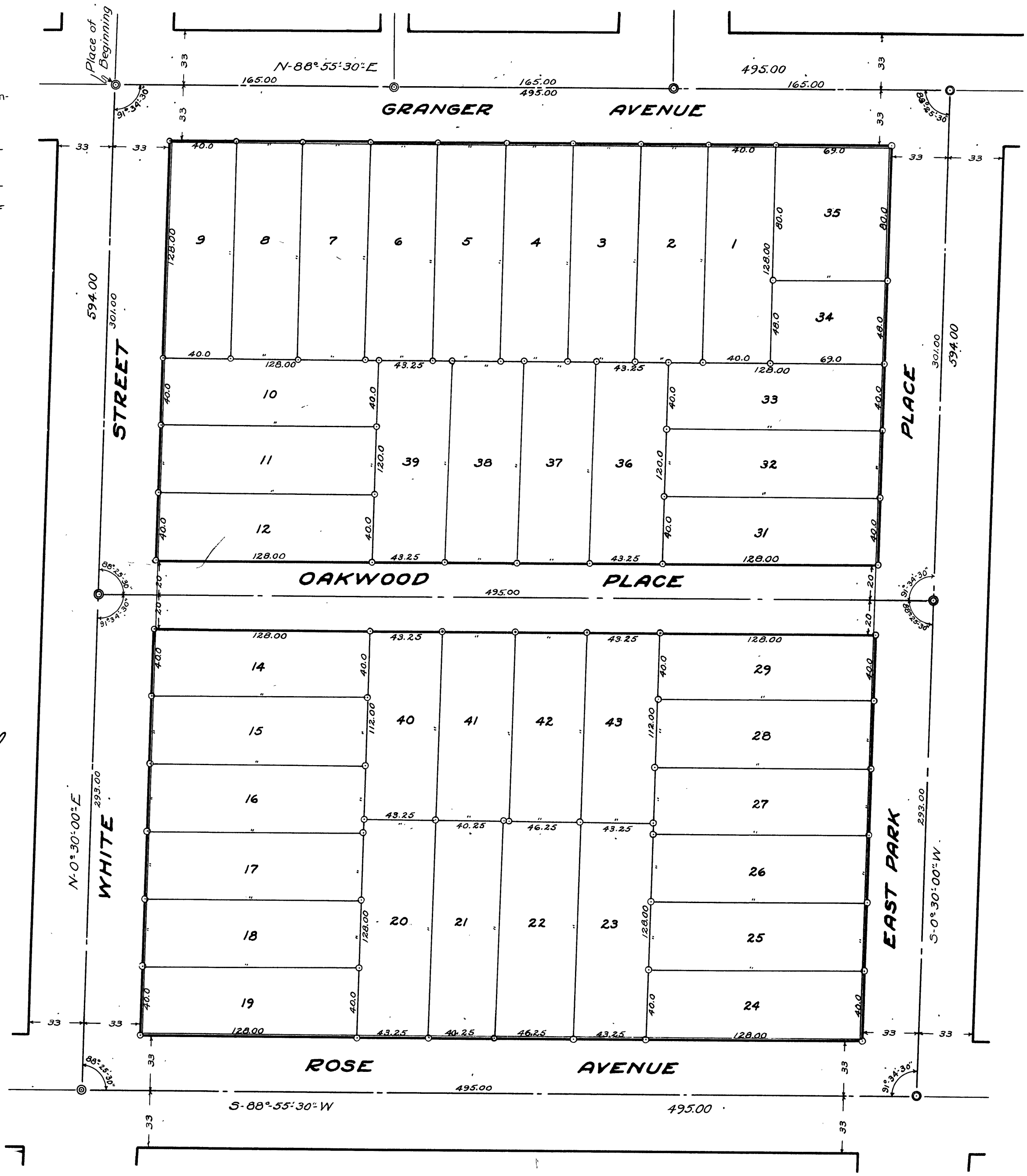
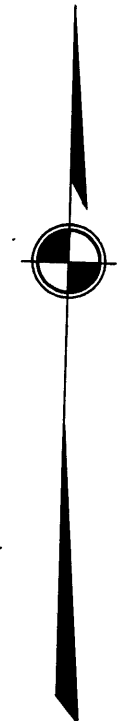
This plat was approved by the Common Council of
the City of Ann Arbor, Washtenaw Co, Michigan at a
meeting held Feb 1 1932
J. W. Coffey
Clerk

This plat was approved by the Board of Public Works
of the City of Ann Arbor, Washtenaw Co, Michigan at a
meeting held Jan 20 1932
J. W. Coffey
Clerk

SURVEYOR'S CERTIFICATE

I hereby certify that the plat hereon delineated is
a correct one and that permanent metal monuments
of not less than one inch in diameter and fifteen inches
in length set in a concrete base at least four inches
in diameter and forty-eight inches in depth have been
placed at all points marked thus: © as thereon shown at
all angles in the boundaries of the land platted, at all the
intersections of streets, intersections of alleys, or of
streets and alleys and at the intersections of streets and
alleys with the boundaries of the plat as shown on said
plat.
George H. Sandburgh
Registered Civil Engineer

Washtenaw
Assessor's Plat no 25
18"
Mar 22 945
9 Plati
John S. Cummings



DEDICATION

KNOW ALL MEN BY THESE PRESENTS: That I Herbert W.
Crippen, Assessor of the City of Ann Arbor, Washtenaw Co.,
Michigan, by virtue of authority in me vested by Section 51,
Act 172 of P.A. 1929, having been duly authorized by the
Common Council of the City of Ann Arbor, Washtenaw
Co., Michigan have caused the land described in the an-
nexed plat to be surveyed, laid out and platted to be
known as "Assessor's Plat No. 25 Replat of the Private
Park of Hamilton, Rose and Sheehan Addition" in the
City of Ann Arbor, Washtenaw County, Michigan, being a
part of Section 33, T. 2. S., R. 6. E., Washtenaw County, Michigan
and that the streets and alleys as shown on said plat are
herby dedicated to the use of the public.

Herbert W. Crippen
Assessor of the City of Ann Arbor,
Washtenaw Co., Michigan.

Witnesses
Geo. M. Blackman
Harold R. Sewall

ACKNOWLEDGEMENT

STATE OF MICHIGAN } ss
COUNTY OF WASHTENAW }
On this nineteenth day of February
A.D. 1932, before me, a Notary Public in and for said County,
personally came the above named Herbert W. Crippen,
Assessor of the City of Ann Arbor, Washtenaw County,
Michigan, known to me to be the person who executed the
above dedication, and acknowledged the same to be
his free act and deed as such Assessor.

Ernest M. Warster
Notary Public in and for Washtenaw
County, Michigan.

My Commission expires _____

DESCRIPTION

Commencing at the West Quarter Corner of Section 33,
T. 2. S., R. 6. E., Washtenaw County, Michigan; thence S-0°30'-
00"-W along the Center Line of State Street 165.00 feet to its
intersection with the Center Line of Granger Avenue; thence
N-88°55'-30" E along the Center Line of Granger Avenue
330.00 feet to its intersection with the Center Line of
White Street, the Place of Beginning; thence N-88°55'-30" E
continuing along the Center Line of Granger Avenue 495.00
feet to its intersection with the Center Line of E. Park Place;
thence S-0°30'-00"-W along the Center Line of E. Park Place
594.00 feet to its intersection with the Center Line of Rose
Avenue; thence S-88°55'-30"-W along the Center Line of Rose
Avenue 495.00 feet to its intersection with the Center Line of
White Street; thence N-0°30'-00" E along the Center Line of
White Street 594.00 feet to the Place of Beginning.

[Note: What would have been Lots #13 & #30 was
deeded to city for street purposes.]

Mar 24-1932
J. B. Hume

Trace of 1/2/32
Checked do