

DEDICATION

KNOW ALL MEN BY THESE PRESENTS, That I, Walter Lahe, Assessor of the City of Ann Arbor, Washtenaw County, Michigan, by virtue of authority in me vested by Section 51, Act 172, of 1929, having been duly authorized by the Common Council of the City of Ann Arbor, Washtenaw County, Michigan, have caused the land described in the annexed plat to be surveyed, laid out and platted, to be known as "ASSESSOR'S PLAT NO. 38" a subdivision of a part of the north-west quarter of Section 21, Town 2 South, Range 6 East, in the City of Ann Arbor, Washtenaw County, Michigan, and that the streets and alleys as shown on said plat are now being used for such purposes.

Witnesses:
Wilson Naylor
Wilson Naylor
Walter Lahe
Walter Lahe,
Assessor of the City
of Ann Arbor

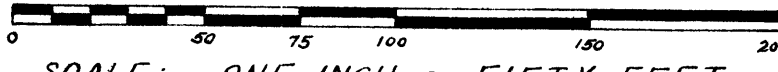
STATE OF MICHIGAN,
County of Washtenaw
On this ... 7 day of ... March ... A.D. 1948...
before me, a Notary Public in and for said County,
personally came the above named Walter Lahe, Assessor
of the City of Ann Arbor, known to me to be the person
who executed the above dedication, and acknowledged
the same to be his free act and deed as such assessor.
Fred J. Looker
Fred J. Looker
Notary Public in and for Washtenaw Co., Mich
My commission expires ... May 7, 1948...

DESCRIPTION
The land embraced in the annexed plat of "ASSESSOR'S PLAT NO. 38" a subdivision of a part of the north-west quarter of Section 21, Town 2 South, Range 6 East, in the City of Ann Arbor, Washtenaw County, Michigan is described as follows:
Commencing at the north quarter post of Section 21, Town 2 South, Range 6 East in the Township of Ann Arbor, Washtenaw County, Michigan; thence south 87°-16'-10" west in the north line of the section 1035.7 feet to the center line of Pontiac Road; thence south 16°-30' west along the center line of Pontiac Road 881.28 feet to the intersection of the prolongation of the south line of lots 24 and 25 in RIVERVIEW ACRES, a subdivision of part of the northwest quarter of Section 21, Town 2 South, Range 6 East, Washtenaw County, Michigan, with the center line of Pontiac Street for a place of beginning; thence continuing south 16°-30' west 749.96 feet to the northeast line of Long Shore Heights; thence north 73°-56' west 329.0 feet to the easterly line of Chandler Road as the same appears on the plat of RIVERVIEW ACRES; thence north 16°-30'-30" east, along the easterly line of Chandler Road 749.89 feet to the southwest corner of lot 24 RIVERVIEW ACRES; thence south 73°-56'-30" east 329.0 feet to the place of beginning, being a subdivision of a part of the northwest quarter of Section 21, Town 2 South, Range 6 East, in the City of Ann Arbor, Washtenaw County, Michigan.

COPY
Register's Office
Washtenaw County, ss.
Plat of "Assessor's Plat
No. 38" City of Ann Arbor
was Recorded this ... day of
March, A.D., 1948, at ... o'clock
P.M. in Liber 10 of Plate
on Page 49
Allan A. Seymour
Register of Deeds
ORIGINAL ON FILE

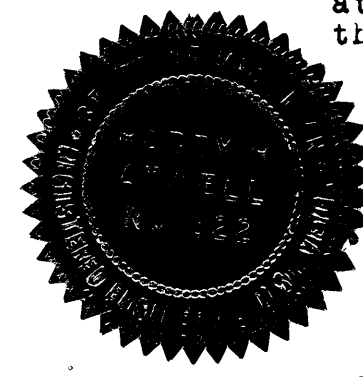
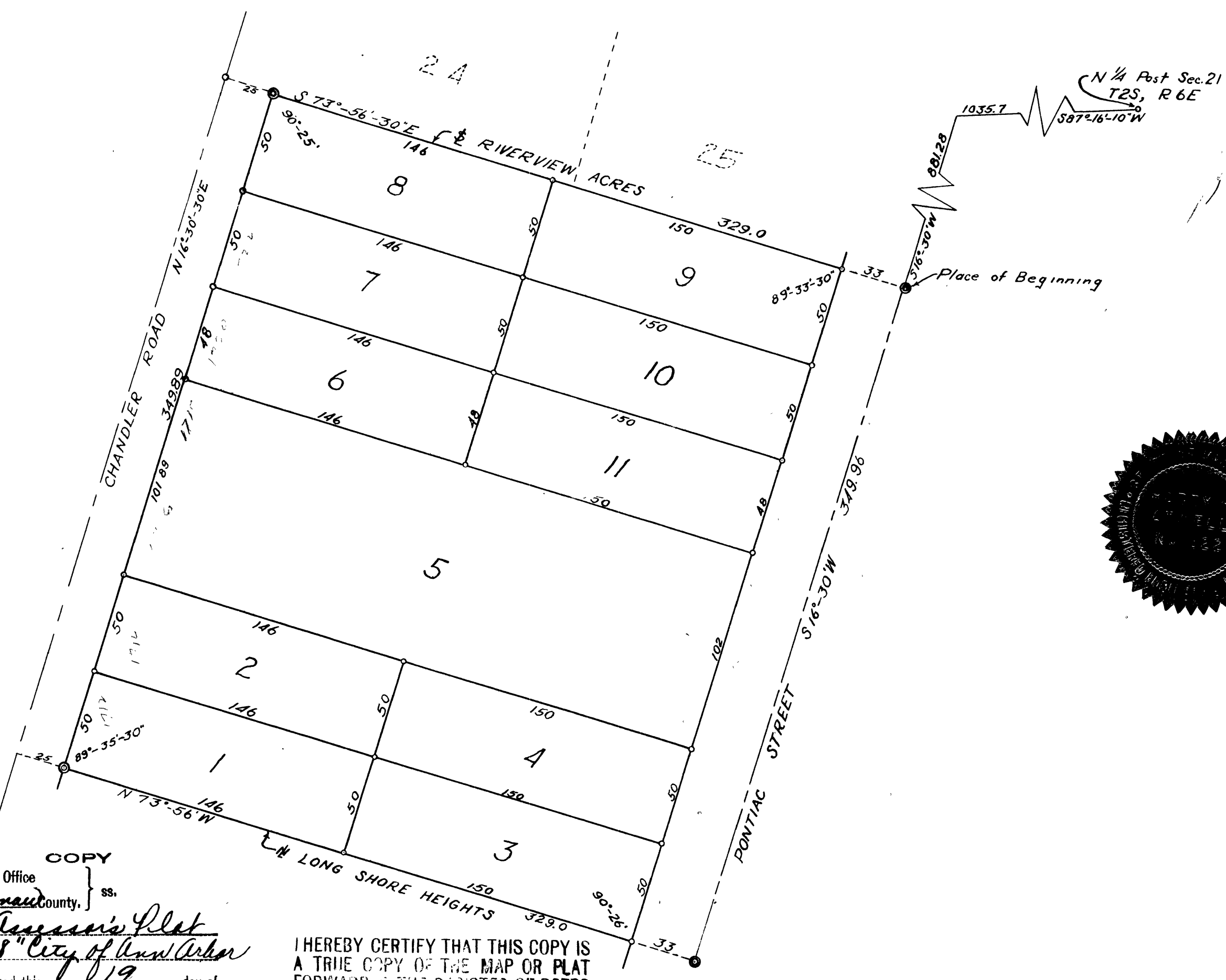
ASSESSOR'S PLAT NO. 38

A SUBDIVISION OF A PART OF THE N.W. 1/4
OF SECTION 21, TOWN 2 SOUTH, RANGE 6 EAST,
IN THE CITY OF ANN ARBOR
WASHTENAW COUNTY, MICHIGAN



SCALE: ONE INCH = FIFTY FEET

NOTE: All dimensions are given
in feet and decimals thereof.



CERTIFICATE OF APPROVAL BY THE PLANNING COMMISSION

This plat was approved by the Planning Commission of the City of Ann Arbor at a meeting held FEBRUARY 24, 1948.

Sybil K. Bennett
Sybil K. Bennett, Chairman
Samuel D. Porter
Samuel D. Porter, Secretary

CERTIFICATE OF MUNICIPAL APPROVAL

This plat was approved by the Common Council of the City of Ann Arbor at a meeting held ...

Fred C. Perry
Fred C. Perry, City Clerk

SURVEYOR'S CERTIFICATE

I hereby certify that the plat hereon delineated is a correct one and that permanent metal monuments consisting of bars not less than one-half inch in diameter and 48 inches in length, or shorter bars of not less than one-half inch in diameter lapped over each other at least 6 inches with an over-all length of not less than 48 inches, enclosed in a concrete cylinder at least 4 inches in diameter and 48 inches in depth have been placed at points marked thus ©, as thereon shown at all angles in the boundaries of the land platted, at all intersections of streets, intersections of alleys, or of streets and alleys, and at the intersections of streets and alleys with the boundaries of the plat as shown on said plat.

Harry H. Atwell
Harry H. Atwell
Registered Civil Engineer and Surveyor.

CERTIFICATE OF APPROVAL BY THE BOARD OF COUNTY AUDITORS

Approved by the Board of County Auditors of Washtenaw County, Michigan, this ... day of ... 1948.

J. Martin Rempp
J. Martin Rempp, Chairman
L. O. Cushing
L. O. Cushing
John E. Walz
John E. Walz

CERTIFICATE OF MUNICIPAL APPROVAL

This plat was approved by the Board of Public Works of the City of Ann Arbor at a meeting held ...

Fred C. Perry
Fred C. Perry, City Clerk

I HEREBY CERTIFY THAT THIS COPY IS
A TRUE COPY OF THE MAP OR PLAT
FORWARDED TO THE REGISTER OF DEEDS
FOR RECORDING

COMPARED
Mayme Jewell Purdy
Mayme Jewell Purdy, DEPUTY AUDITOR GENERAL

FILED IN AUDITOR GENERAL'S DEPT.

Examined and Approved
Mayme Jewell Purdy
Mayme Jewell Purdy, DEPUTY AUDITOR GENERAL