

ANN ARBOR OAKS

PART OF THE S.W. 1/4 OF SECTION 10, T.3S., R.6E.,
CITY OF ANN ARBOR, WASHTENAW COUNTY,
MICHIGAN

COUNTY DRAIN COMMISSIONERS CERTIFICATE

Approved on April 8, 1988 as complying with Section 192 of Act 288, P.A. 1967 and the applicable rule... and regulations published by my office in the county of Washtenaw.

C. Dolores Sigal
C. Dolores Sigal
Drain Commissioner,
Washtenaw County

CERTIFICATE OF MUNICIPAL APPROVAL

I certify that this plat was approved by the City Council of Ann Arbor, at a meeting held May 16, 1988 and was reviewed and found to be in compliance with Act 288, P.A. of 1967, and public water services and public sewer are in and ready for connection. City of Ann Arbor does have the proper adopted zoning and subdivision control ordinance with reference to Section 148 (4) and 186 of Act 288, P.A. of 1967, and proper surety has been posted with the City of Ann Arbor to insure the placement of monuments and lot corners prior to May 16, 1989.

AND WAIVES THE MINIMUM LOT SIZE SPECIFIED

W. Northcross
W. Northcross
City Clerk, Ann Arbor

COUNTY PLAT BOARD CERTIFICATE

This plat has been reviewed and is approved by the Washtenaw County Plat Board on September 19, 1988 as being in compliance with all of the provisions of Act 288, P.A. 1967, and the Plat Board's applicable rules and regulations.

Dillard Roy Craiger
Chairman, Plat Board
Washtenaw County Board of Commissioners
Robert M. Harrison
Robert M. Harrison
County Clerk, Register of Deeds
Michael A. Stimpson
Michael A. Stimpson
County Treasurer

CERTIFIED TRUE COPY OF
RECORDED PLAT
DEPARTMENT OF COMMERCE
Richard E. Lomax
Richard E. Lomax, L.S.
Manager Plat Section
Date April 26, 1989

RECORDING CERTIFICATE

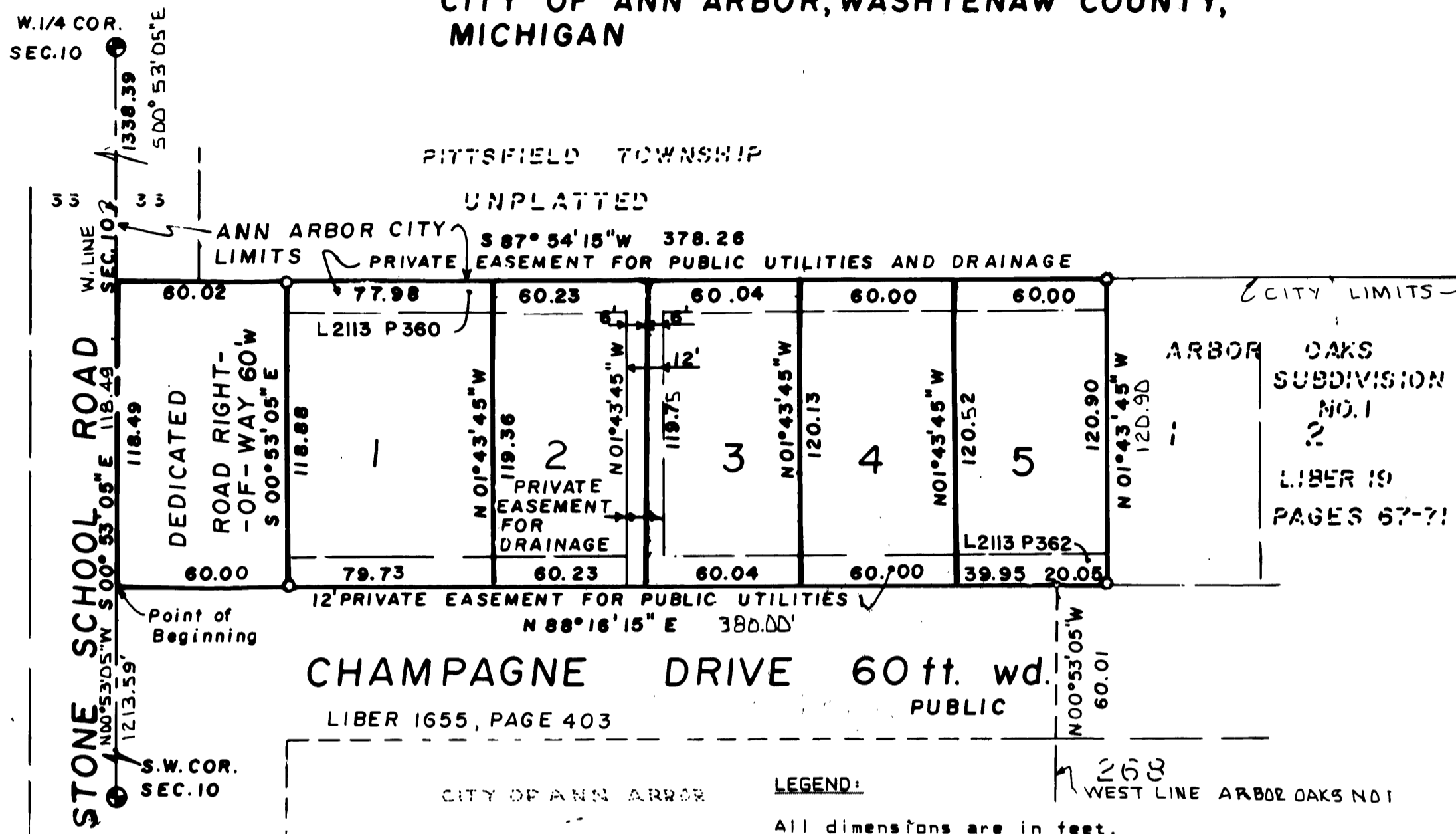
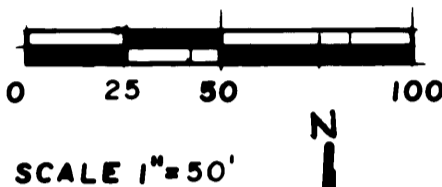
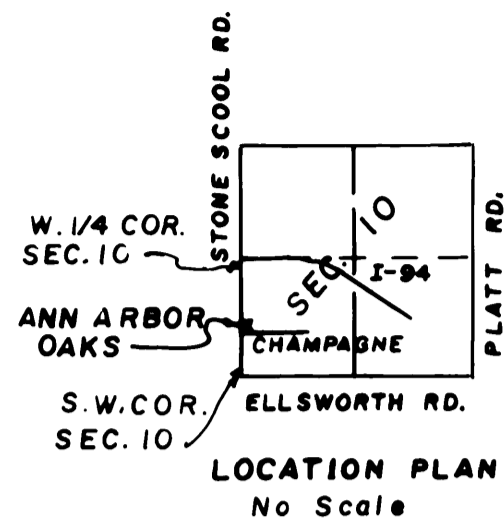
STATE OF MICHIGAN)
County of Washtenaw)

This Plat was received for record on the 14th day of February, 1988, at 8:53 a.m. and recorded in Liber 24 of Plats, on Page 45.

Robert M. Harrison
Robert M. Harrison
Register of Deeds/County Clerk,
Washtenaw County

3-F-652

SHEET 1 OF 1



SURVEYOR'S CERTIFICATE

I, John S. Blanchard, Surveyor Certify:

That I have surveyed, divided and mapped the land shown on this plat, described as follows: Ann Arbor Oaks, a part of the S. W. 1/4 of Section 10, T.3S., R.6E., City of Ann Arbor, Washtenaw County, Michigan; described as:
Commencing at the Southwest corner of said Section 10; thence N 0 degrees 53' 05" W, along the West line of said Section 10; 1213.59 ft., to the Place of Beginning; thence N 88 degrees 16' 15" E, 380.00 ft., along the North line of Champagne Dr. to the Southwest corner of Lot 1; "Arbor Oaks Subdivision #1" as recorded in Liber 19 of Plats, Pages 67 thru 71; thence N 01 degrees 43' 45" W, 120.90 ft., along the West line of said Lot #1, to the Northwest corner of said Lot #1; thence S 87 degrees 54' 15" W, to the West line of said Section 10, 378.26 ft.; thence S 00 degrees 53' 05" E, along said West line 118.49 ft., to the Place of Beginning. Contains 5 Lots numbered 1-5, inclusive. Containing 1.04 acres.

That I have made such survey, land division and plat by the direction of the owners of such land.

That such plat is a correct representation of all the exterior boundaries of the land surveyed and the subdivision of it.

That the required monuments and lot markers have been located in the ground or that surety has been deposited with the municipality, as required by Section 125 of the Act.

That the accuracy of survey within the limits required by Section 126 of the Act.

That the bearings shown on the plat are expressed as required by Section 126(3) of the Act and explained in the legend.

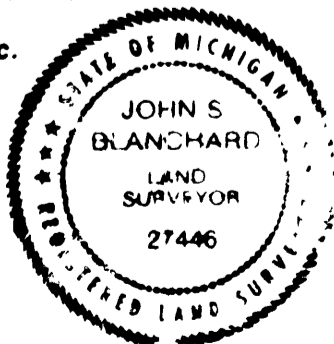
DATE March 30, 1988

John S. Blanchard
John S. Blanchard RLS No 27446 40 1st Ct.
Ypsilanti, Michigan 48198
E.P. Kubiske & Associates, Inc.
Vice Pres.

COUNTY TREASURER'S CERTIFICATE

The records in my office show no unpaid taxes or special assessments for the five years preceding April 6, 1988, involving the lands included in this plat.

Michael A. Stimpson
Michael A. Stimpson
County Treasurer, Washtenaw Co.



UNPLATTED

PROPRIETOR'S CERTIFICATE

JOHN F. SCHERER INC., A Corporation duly organized and existing under the Laws of Michigan, by John F. Scherer, President and Barbara J. Scherer, Secretary, as Proprietor has caused the land to be surveyed, mapped, divided and dedicated, as represented on the plat, that the public utility easements are private easements and that all other easements are for the use shown on the plat. Streets are for the use of the public.

John F. Scherer, Inc.
3253 Lehr Rd.
Ann Arbor, Michigan 48108

C.F. Ross II
Witness: C.F. Ross II

John F. Scherer
John F. Scherer
President

Suzanne Girbach
Witness: Suzanne Girbach

Barbara J. Scherer
Barbara J. Scherer
Secretary

ACKNOWLEDGEMENT

STATE OF MICHIGAN)
County of Washtenaw) ss.

Personally came before me this 5th day of April, 1988, John F. Scherer, President of John F. Scherer Inc., and Barbara J. Scherer, Secretary of John F. Scherer Inc., TO ME KNOWN TO BE THE PERSONS WHO EXECUTED THE FOREGOING INSTRUMENT AND TO ME KNOWN TO BE SUCH PRESIDENT AND SECRETARY OF SAID CORPORATION AND ACKNOWLEDGE THAT THEY EXECUTED THE FOREGOING INSTRUMENT AS SUCH OFFICERS AS THE FREE ACT AND DEED OF SAID CORPORATION, BY ITS AUTHORITY.

C.F. Ross II
C.F. ROSS II
Notary Public State of Michigan, Washtenaw County
My Commission expires: 10-21-91