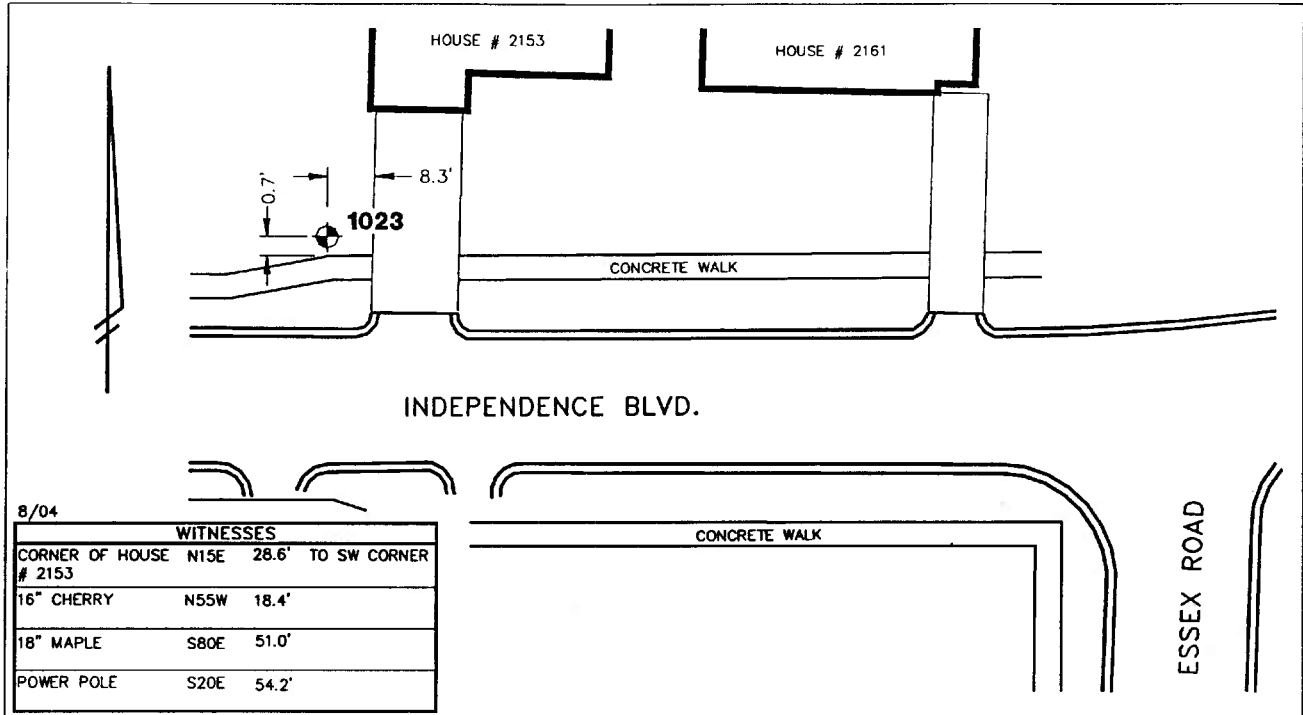


City of Ann Arbor
Public Services Area • Project Management Unit
CONTROL STATION DATA SHEET

Approximate Location: Independence Blvd. At Essex Rd.



STATION 1023 IS LOCATED ON THE NORTH SIDE OF INDEPENDENCE BOULEVARD, AND WEST OF ESSEX ROAD, SAID STATION BEING IN THE NORTHWEST 1/4 OF SECTION 3, PITTSFIELD TOWNSHIP IN THE CITY OF ANN ARBOR, MICHIGAN. THE STATION IS LOCATED 0.7' NORTH OF THE NORTH EDGE OF THE 5.0' CONCRETE WALK ALONG THE NORTH SIDE OF INDEPENDENCE BOULEVARD AND 8.3' WEST OF THE WEST EDGE OF THE CONCRETE DRIVE LEADING TO 2153 INDEPENDENCE BOULEVARD. SAID STATION IS A VERTICAL CONTROL STATION AND IS DESCRIBED AS THE 1972 EDITION OF THE CITY OF ANN ARBOR BRASS DISC, SET IN CONCRETE PER DETAIL III AND IS FLUSH WITH THE GROUND. THIS STATION WAS SET BY THE CITY OF ANN ARBOR IN 1972.

Benchmark

	Vertical	
Accuracy		2nd Order Class II
Datum		NAVD 88
Elevation in meters		271.463
Elevation in International feet		890.62

No. 1023
Sector: EC