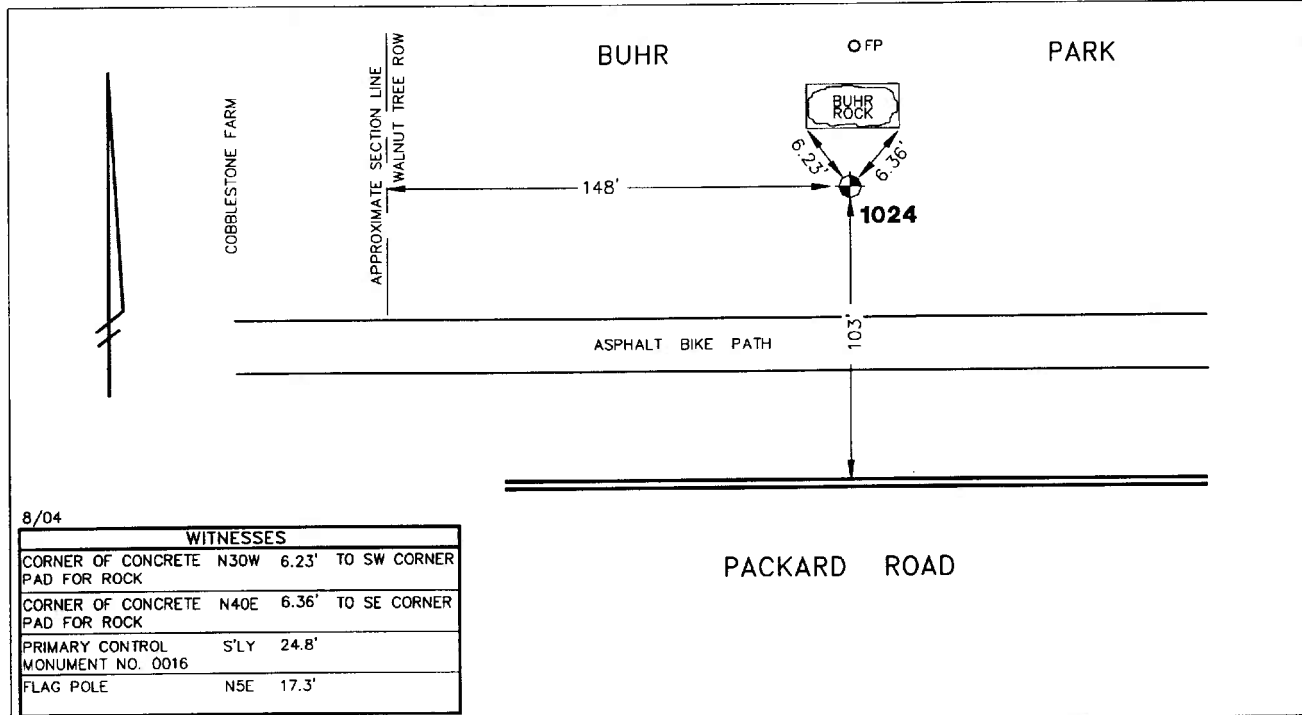


Public Services Area • Project Management Unit
CONTROL STATION DATA SHEET

Approximate Location: Buhr Park



8/04

WITNESSES		
CORNER OF CONCRETE PAD FOR ROCK	N30W 6.23'	TO SW CORNER
CORNER OF CONCRETE PAD FOR ROCK	N40E 6.36'	TO SE CORNER
PRIMARY CONTROL MONUMENT NO. 0016	S'LY 24.8'	
FLAG POLE	N5E 17.3'	

STATION 1024 IS LOCATED IN BUHR PARK ON THE NORTH SIDE OF PACKARD ROAD AND EASTERLY OF THE COBBLESTONE FARM HOUSE, SAID STATION BEING IN THE SOUTHEAST 1/4 OF SECTION 3, PITTSFIELD TOWNSHIP IN THE CITY OF ANN ARBOR, MICHIGAN. THE STATION IS LOCATED 6.23' SOUTHEAST OF THE SOUTHWEST CORNER OF THE BUHR ROCK PEDESTAL AND 6.36' SOUTHWEST OF THE SOUTHEAST CORNER OF THE AFOREMENTIONED ROCK PEDESTAL. SAID STATION IS VERTICAL CONTROL STATION AND IS DESCRIBED AS THE 1972 EDITION OF THE CITY OF ANN ARBOR BRASS DISC, SET IN CONCRETE PER DETAIL III AND IS FLUSH WITH THE GROUND. THIS STATION WAS SET BY THE CITY OF ANN ARBOR IN 1972.

Benchmark

Vertical

Accuracy	2nd Order Class II
Datum	NAVD 88
Elevation in meters	249.266
Elevation in International feet	817.80

No. 1024
 Sector: SE