

PINE VALLEY ESTATES SUBDIVISION

OF PART OF THE N.E. 1/4 AND S.E. 1/4 OF SECTION 4, T.3 S., R.6 E.,
CITY OF ANN ARBOR, WASHTENAW COUNTY, MICHIGAN.

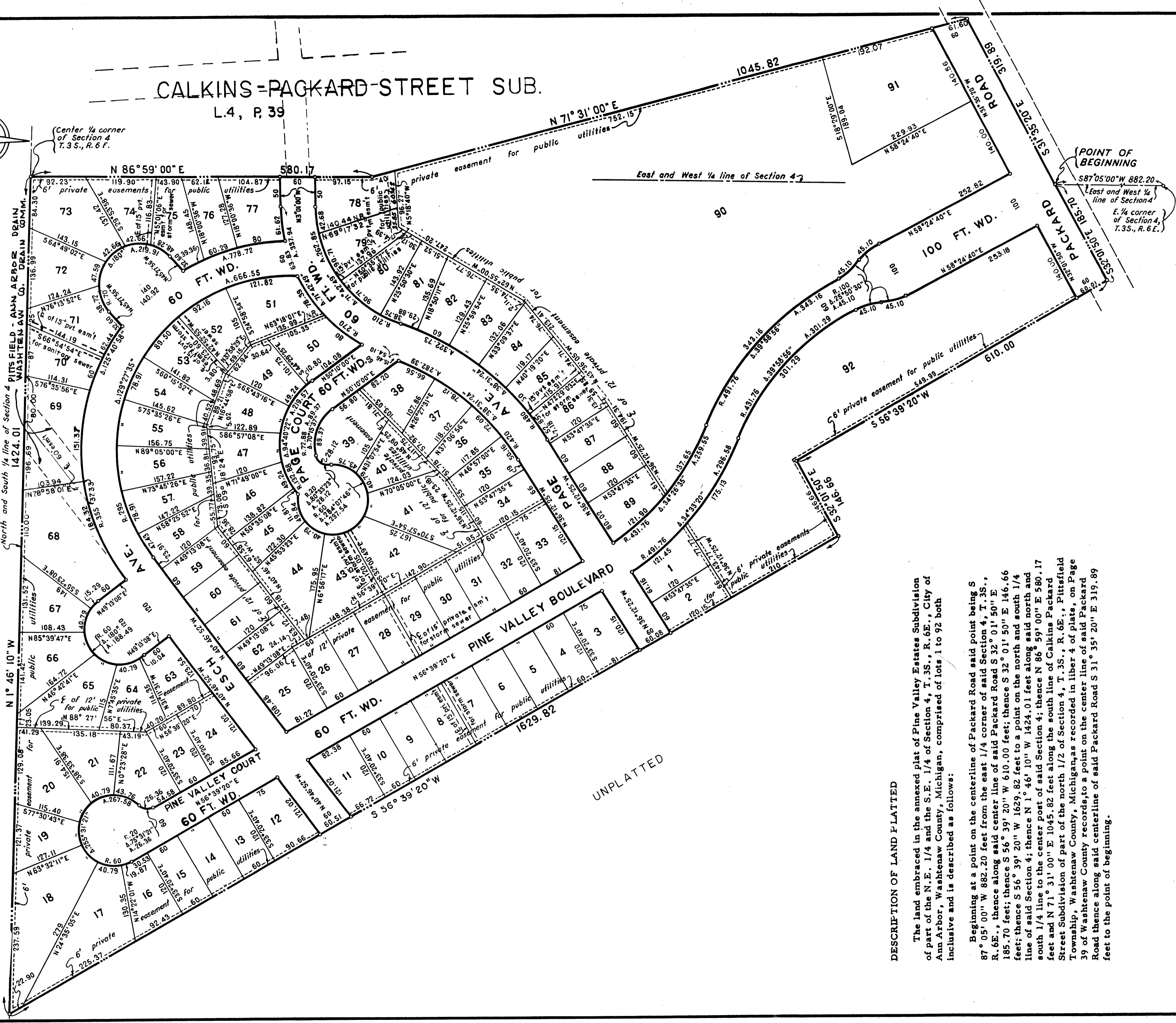
SHEET 1
OF
2 SHEETS

JOHN E. HILTZ AND ASSOCIATES, INC.
Registered Civil Engineers
and Land Surveyors,
17201 W. McNichols Road,
Detroit 35, Mich.

UNPLATTED

SCALE: ONE INCH = 100 FEET.

NOTE: All dimensions are shown in feet and decimals thereof.
All curvilinear dimensions are shown along the arc.
Side lines of lots fronting on curvilinear street
lines are radial thereto unless otherwise noted
as (N.R.).



CALKINS-PACKARD STREET SUB.
L.4, P.39

(POINT OF BEGINNING)
S87°05'00"W 882.20'
East and West 1/4
line of Section 4
E. 1/4 corner of
Section 4,
T.3S., R.6E.

DESCRIPTION OF LAND PLATTED

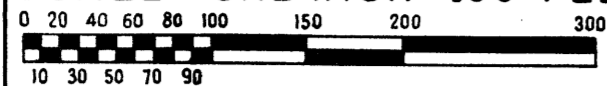
The land embraced in the annexed plat of Pine Valley Estates Subdivision of part of the N.E. 1/4 and the S.E. 1/4 of Section 4, T.3S., R.6E., City of Ann Arbor, Washtenaw County, Michigan, comprised of lots 1 to 92 both inclusive and is described as follows:

Beginning at a point on the centerline of Packard Road said point being S 87° 05' 00" W 882.20 feet from the east 1/4 corner of said Section 4, T. 3S., R. 6E., thence along said center line of said Packard Road S 32° 01' 50" E 185.70 feet; thence S 56° 39' 20" W 610.00 feet; thence S 32° 01' 50" E 146.66 feet; thence S 56° 39' 20" W 1629.82 feet to a point on the north and south 1/4 line of said Section 4; thence N 1° 46' 10" W 1424.01 feet along said north and south 1/4 line to the center post of said Section 4; thence N 86° 59' 00" E 580.17 feet and N 71° 31' 00" E 1045.82 feet along the south line of Calkins Packard Street Subdivision of part of the north 1/2 of Section 4, T. 3S., R. 6E., Pittsfield Township, Washtenaw County, Michigan, as recorded in liber 4 of plats, on Page 39 of Washtenaw County records, to a point on the center line of said Packard Road thence along said centerline of said Packard Road S 31° 35' 20" E 319.89 feet to the point of beginning.

PINE VALLEY ESTATES SUBDIVISION

OF PART OF THE N.E. 1/4 AND S.E. 1/4 OF SECTION 4, T.3 S., R.6 E.,
CITY OF ANN ARBOR, WASHTENAW COUNTY, MICHIGAN.

SCALE: ONE INCH = 100 FEET.



NOTE: All dimensions are shown in feet and decimals thereof.
All curvilinear dimensions are shown along the arc.
Side lines of lots fronting on curvilinear street
lines are radial thereto unless otherwise noted
as (N.R.).

JOHN E. HILTZ AND ASSOCIATES, INC.
Registered Civil Engineers
and Land Surveyors,
17201 W. McNichols Road,
Detroit 35, Mich.

SHEET 2
OF
2 SHEETS

DEDICATION

KNOW ALL MEN BY THESE PRESENTS, that we Barton Inc., a Michigan Corporation, by Stephan F. Slavik, President, and Joseph F. Slavik, Secretary and Treasurer, and Eberhard Esch and Edna Esch, his wife, as proprietors, have caused the land embraced in the annexed plat to be surveyed, laid out and platted to be known as Pine Valley Estates Subdivision, of part of the N.E. 1/4 and S.E. 1/4 of Section 4, T. 3S., R. 6E., City of Ann Arbor, Washtenaw County, Michigan, and that the streets as shown on said plat are hereby dedicated to the use of the public, and that the private easements indicated on said plat are not dedicated to the public but the right to use said easements is hereby reserved for public utilities and for any other uses as designated hereon, and no permanent structures are to be erected within the lines of said easements, subject to the regulation and control of the use thereof by the local governmental authority.

WITNESSES:

BARTON INC., a Michigan Corporation

Violet La Marsh
VIOLET LA MARSH
Stephan F. Slavik
Stephan F. Slavik, President
David F. Meinzynger
DAVID F. MEINZYNGER
Joseph F. Slavik
Joseph F. Slavik, Secretary & Treas.
Eberhard Esch
Eberhard Esch
Edna Esch
Edna Esch, his wife
Carl I. Robinson
ACKNOWLEDGMENT

STATE OF MICHIGAN) ss.
County of OAKLAND)

On this 9TH day of OCTOBER 1963, before me, NANCY ANNE MYERS a Notary Public in and for said County appeared Stephan F. Slavik, and Joseph F. Slavik to me personally known, who being each by me duly sworn did say that they are the President and Secretary-Treasurer, respectively, of Barton Inc., a Michigan Corporation and that the seal affixed to said instrument is the corporate seal of said corporation and that said instrument was signed and sealed in behalf of said corporation by authority of its Board of Directors and the said Stephan F. Slavik and Joseph F. Slavik acknowledged said instrument to be the free act and deed of said corporation.

My Commission Expires:

JANUARY 29, 1966

Nancy Anne Myers
Nancy Anne Myers
Notary Public in and for WAYNE County
ACTING IN OAKLAND COUNTY, MICHIGAN

ACKNOWLEDGMENT

STATE OF MICHIGAN) ss.
County of Washtenaw)

On this 11 day of October AD. 1963, before me, a Notary Public in and for said county, personally came the above named Eberhard Esch, and Edna Esch, his wife, known to me to be the persons who executed the above dedication, and acknowledged the same to be their free act and deed.

My Commission Expires:

MARCH 15, 1964

Verniece J. Weinberg
VERNIECE J. WEINBERG
Notary Public in and for Washtenaw County

I hereby certify this copy is a true copy of the original plat forwarded the Register of Deeds for recording.
Date Jan 16, 1964
FILED IN REGISTER GENERAL'S OFFICE
Date Feb 3, 1964
By Richard E. Lomas
Date Jan 16, 1964
Richard E. Lomas
RICHARD E. LOMAS
AUDITOR GENERAL
By Richard E. Lomas - Plat Examiner

COPY
Register's Office } s. s.
Washtenaw County }
Plat of Pine Valley Estates Subdivision, City of Ann Arbor was Recorded on 16th day of January 16, 1964 3:45 P.M. in Liber 172 - 173 - 174 on Pages 8-9
Patricia Newkirk Hardy
Register of Deeds
ORIGINAL ON FILE
By: Annette R. Koft, Dep.

CERTIFICATE OF APPROVAL BY THE CITY PLANNING COMMISSION

This plat was approved by the Planning Commission of the City of Ann Arbor, Michigan at a meeting held on the 22ND day of OCTOBER, 1963.

Joseph W. Edwards
Joseph W. Edwards, Vice-Chairman
Robert V. Galbreath
Robert V. Galbreath, Secretary

CERTIFICATE OF MUNICIPAL APPROVAL

This plat was approved by the Common Council of the City of Ann Arbor at a meeting held November 4, 1963 and is in compliance with Section 19a and that the width of lots conforms with requirements of Section 30, Act 172 of 1924, as amended.

Fred J. Hooker
Fred J. Hooker, Clerk

APPROVAL BY BOARD OF COUNTY ROAD COMMISSIONERS

This plat has been examined and was approved on the _____ day of _____ 1963, by the Washtenaw County Board of Road Commissioners.

Raymond L. Koch (Chairman)
Don A. Weir (Vice-Chairman)
H. L. Frisinger (Member)

APPROVAL BY COUNTY PLAT BOARD

This plat was approved on the 9TH day of January, 1963, 1964, by the Washtenaw County Plat Board.

Patricia Newkirk Hardy
Patricia Newkirk Hardy (County Register of Deeds)
J. Martin Rempp
J. Martin Rempp (Auditor)
John P. Cook
John P. Cook (Auditor)
Herbert G. Loeffler
Herbert G. Loeffler (Auditor)
John H. Flook
John H. Flook (County Drain Commissioner)

COUNTY TREASURER'S CERTIFICATE

Office of County Treasurer, Washtenaw County, I hereby certify, that there are no tax liens or titles held by the State on the lands described hereon, and that there are no tax liens or title held by individuals on said lands, for the five years preceding the 29 day of November, 1963, and that the taxes for said period of five years are all paid, as shown by the records of this office.

This certificate does not apply to taxes, if any, now in process of collection by township, city or village collecting officers.

Sylvester A. Leonard
S. A. Leonard (County Treasurer)

SURVEYOR'S CERTIFICATE

I hereby certify that the plat hereon delineated is a correct one, and that permanent monuments consisting of metal rods not less than one half inch in diameter and 36 inches in length, encased in concrete cylinders 4 inches in diameter and 36 inches in length, have been set at points marked thus (o) as thereon shown at all angles in the boundaries of the land platted, at all intersections of the lines of streets, and at the intersections of the lines of streets with the boundaries of the plat.

Francis A. Papke
Francis A. Papke
Registered Land Surveyor