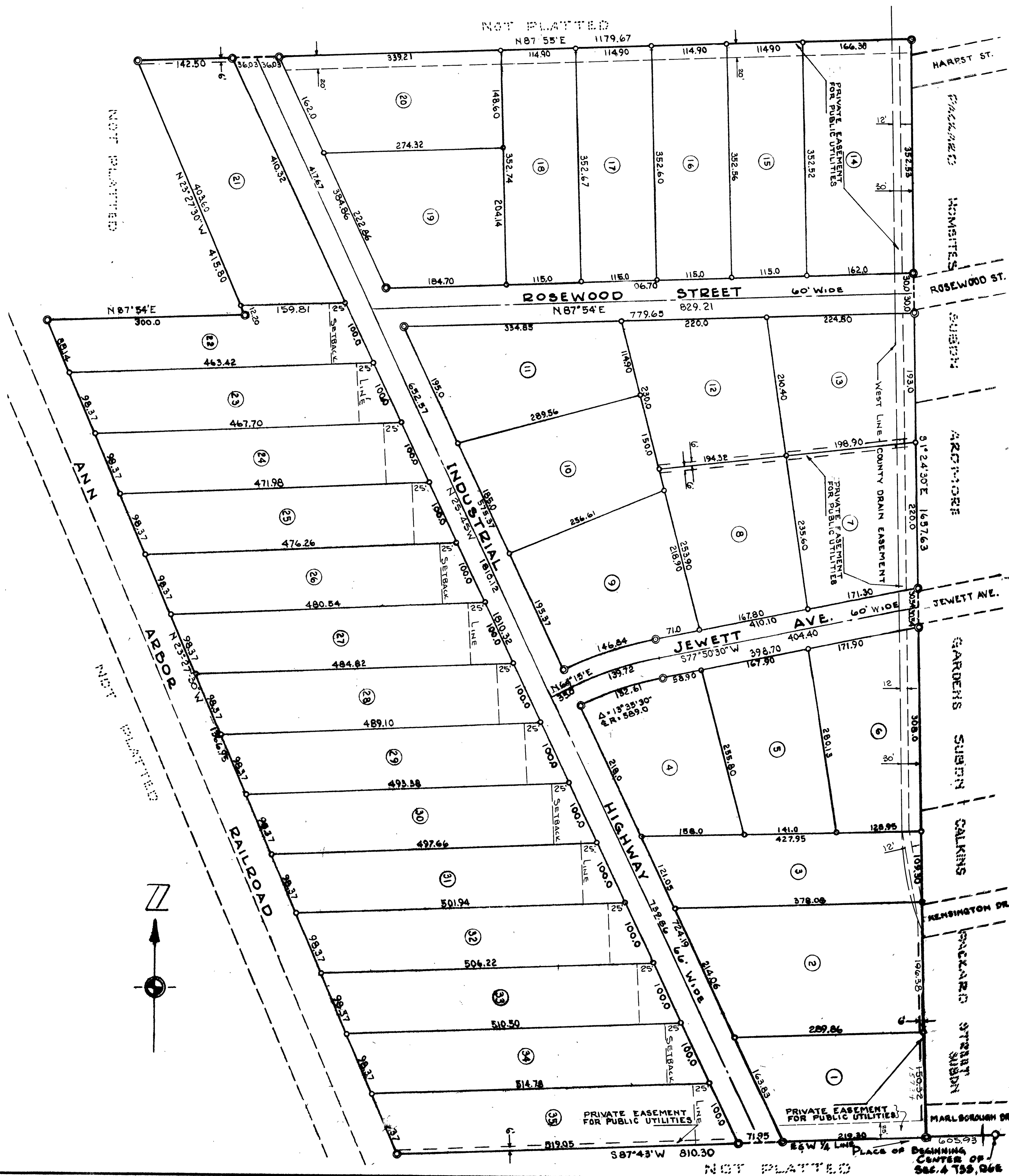


FRISINGER INDUSTRIAL SUBDIVISION

A PART OF THE NW 1/4 OF SECTION 4, T3S,R6E, CITY OF ANN ARBOR, WASHTENAW COUNTY, MICHIGAN



ALL DIMENSIONS IN FEET AND DECIMALS THEREOF
ALL DIMENSIONS ON CURVES ARE ARC LENGTHS
SURVEY BY ATWELL-HICKS, INC.



50173002 2 OF 2
FRISINGER INDUSTRIAL SUBDIVISION
LEADER:15 PAGE:25-26 07/13/1960

FRISINGER INDUSTRIAL SUBDIVISION

A PART OF THE NW 1/4 OF SECTION 4, T3S, R6E, CITY OF ANN ARBOR, WASHTENAW COUNTY, MICHIGAN



ALL DIMENSIONS IN FEET AND DECIMALS THEREOF
ALL DIMENSIONS ON CURVES ARE ARC LENGTHS
SURVEY BY ATWELL-HICKS, INC.

DEDICATION

KNOW ALL MEN BY THESE PRESENTS, that we C. Edward Frisinger and Mary Agnes Frisinger his wife, Jacob Ross and Anna Maria Ross his wife, H. Max Koch and Lucille I. Koch his wife, and Norman F. Miller, Jr. and Rosanna F. Miller his wife, as proprietors, and the Lewis and Frisinger Company, a Michigan Corporation by C. E. Frisinger, President and G. P. Frisinger, Secretary, have caused the land embraced in the annexed plat to be surveyed, laid out and platted, to be known as FRISINGER INDUSTRIAL SUBDIVISION a part of the NW 1/4 of Section 4, T3S, R6E, City of Ann Arbor, Washtenaw County, Michigan and that the street, avenue, and highway as shown on said plat are hereby dedicated to the use of the public.

DESCRIPTION OF LAND PLATTED

The land embraced in the annexed plat of FRISINGER INDUSTRIAL SUBDIVISION a part of the NW 1/4 of Section 4, T3S, R6E, City of Ann Arbor, Washtenaw County, Michigan is described as follows:

Commencing at the center of Section 4, T3S, R6E, Pittsfield Township, Washtenaw County, Michigan; thence along the E & W 1/2-line of said section S 87°-43' W 605.93 feet for a PLACE OF BEGINNING; thence continuing along said E & W 1/2-line S 87°-43' W 810.30 feet; thence N 23°-27'-30" W 1366.95 feet; thence N 87°-54' E 300.0 feet; thence N 23°-27'-30" W 415.80 feet; thence N 87°-55' E 1179.67 feet; thence S 1°-24'-30" E 1657.63 feet to the place of beginning, containing 35 lots numbered 1 through 35 inclusive.

CERTIFICATE OF APPROVAL BY THE CITY PLANNING COMMISSION

This plat was approved by the Planning Commission of the City of Ann Arbor, Michigan at a meeting held on the 10th day of JUNE, 1958.

Paul G. Kauper
Paul G. Kauper (Chairman)
Leo P. Meyers
Leo P. Meyers (Secretary)

Signed and Sealed
in the Presence of:

Helen Adcock
Helen Adcock (Witness)
Elsa E. Reuter
Elsa E. Reuter (Witness)

C. Edward Frisinger
C. Edward Frisinger
Mary Agnes Frisinger
Mary Agnes Frisinger
Jacob Ross
Jacob Ross
Anna Maria Ross
Anna Maria Ross
H. Max Koch
H. Max Koch
Lucille I. Koch
Lucille I. Koch
Norman F. Miller, Jr.
Norman F. Miller, Jr.
Rosanna F. Miller
Rosanna F. Miller

MUNICIPAL APPROVAL

This plat was approved by the COMMON COUNCIL of the City of Ann Arbor at a meeting held July 11, 1958.

Fred J. Looker
Fred J. Looker (Clerk)

CITY CLERK'S CERTIFICATE

Office of City Clerk, City of Ann Arbor
I hereby certify, that the width and depth of lots shown on this plat are in compliance with rules and regulation of the City of Ann Arbor and the requirements as to width and depth of Sec. 30 of Act 172, Public Acts of 1929 as amended by Act 186 Public Acts of 1954.

Fred J. Looker
Fred J. Looker (Clerk)

COUNTY TREASURER'S CERTIFICATE

Office of County Treasurer, Washtenaw County
I hereby certify, that there are no tax liens or titles held by the State on the lands described hereon, and that there are no tax liens or titles held by individuals on said lands, for the five years preceding the 7th day of July, 1958, and that the taxes for said period of five years are all paid, as shown by the records of this office.

W. F. Verner
W. F. Verner (County Treasurer)

Signed and Sealed
in the Presence of:

Helen Adcock
Helen Adcock (Witness)
Elsa E. Reuter
Elsa E. Reuter (Witness)

LEWIS AND FRISINGER
COMPANY BY:
C. E. Frisinger
C. E. Frisinger (President)
G. P. Frisinger
G. P. Frisinger (Secretary)

ACKNOWLEDGMENT

STATE OF MICHIGAN)
COUNTY OF WASHTENAW) ss.

On this 20th day of May, A.D. 1958, before me, a Notary Public in and for said county, personally came the above named C. Edward Frisinger and Mary Agnes Frisinger, Jacob Ross and Anna Maria Ross, H. Max Koch and Lucille I. Koch, Norman F. Miller Jr. and Rosanna F. Miller, known to me to be the persons who executed the above dedication, and acknowledged the same to be their free act and deed.

Elsa E. Ryan (Reuter)
Elsa E. Ryan (Reuter)
Notary Public Washtenaw County
My Commission expires Sept. 18, 1959

ACKNOWLEDGMENT

STATE OF MICHIGAN)
COUNTY OF WASHTENAW) ss.

On this 20th day of May, A.D. 1958, before me a Notary Public in and for said County appeared C. E. Frisinger and G. P. Frisinger to me personally known, who being each by me duly sworn did say that they are the President and Secretary respectively of the Lewis and Frisinger Company, a Michigan Corporation, and that the seal affixed to said instrument is the corporate seal of said Corporation and that said instrument was signed and sealed in behalf of said Corporation by authority of its Board of Directors and the said C. E. Frisinger and G. P. Frisinger acknowledged said instrument to be the free act and deed of said corporation.

Elsa E. Ryan (Reuter)
Elsa E. Ryan (Reuter)
Notary Public Washtenaw County
My Commission expires Sept 18, 1959

SURVEYOR'S CERTIFICATE

I hereby certify that the plat hereon delineated is a correct one and that permanent metal monuments consisting of bars not less than one-half inch in diameter and 36 inches in length, or shorter bars of not less than one-half inch in diameter lapped over each other at least 6 inches with an overall length of not less than 36 inches, encased in a concrete cylinder at least 4 inches in diameter and 36 inches in depth have been placed at points marked thus (©) as shown at all angles in the boundaries of the land platted, at all the intersections of lines of streets, and at the intersections of lines of streets with the boundaries of the plat as shown on said plat.

Robert J. Jagow
Robert J. Jagow
Registered Land Surveyor #6998

APPROVAL BY COUNTY PLAT BOARD

This plat was approved on the 7th day of July, 1958 by the Washtenaw County Plat Board.

Patricia Newkirk Hardy
Patricia Newkirk Hardy (County Register of Deeds)
J. Martin Rempp
J. Martin Rempp (Auditor)
John P. Cook
John P. Cook (Auditor)
Herbert G. Loeffler
Herbert G. Loeffler (Auditor)
John H. Flook
John H. Flook (County Drain Commissioner)

COPY
Walter
Frisinger Industrial Subdivision
July 12, 1960
July 14, 1960
July 12, 1960
Patricia Newkirk Hardy

July 12, 1960
July 14, 1960
July 12, 1960