

"SOUTH MAIN WOODS"
THE SOUTH TEN ACRES OF EAST HALF, EAST HALF, SOUTHWEST QUARTER
SECTION 5, T. 35, R. 6 E., PITTSFIELD TOWNSHIP
WASHTENAW COUNTY, MICHIGAN.
 Scale 1 inch = 100 Feet.

1 OF 1
 08/27/1940
 10098001
 ROYAL MAIL ROOMS BUREAU
 T. 1885
 08/27/1940

SURVEYOR'S CERTIFICATE: I hereby certify that the plat herein delineated is a correct and true representation of the land shown on the plat, and that the same has been surveyed and measured in accordance with the laws of this State, and that the same has been placed at points marked four (4) as a station shown of all angles in the boundaries of the land, and that at all the intersections of streets, alleys, or of streams and alleys, and at the intersections of streets and alleys with the boundaries of the plat as shown on said plat.

Harry G. Raebach
 Surveyor

DESCRIPTION OF LAND PLATTED: The land embraced in the inclosed plat of SOUTH MAIN WOODS the south ten acres of east half, east half, southwest quarter Section 5, T. 35, R. 6 E., Pittsfield Township, Washtenaw County, Michigan, is described as follows: Beginning at the south quarter corner Section 5, T. 35, R. 6 E., Washtenaw County, Michigan, and running thence S. 88° 14' W. along the north line of said section for line of said section for 640.00 feet to a point 5.88° 14' N. for 590.00 feet, thence S. 88° 14' W. for 640.00 feet to the south line of said section for 640.00 feet to the point of beginning.

DEDICATION: KNOW ALL MEN BY THESE PRESENTS, That we, Interstate Credit Company, a partnership association organized under the laws of the State of Michigan, do hereby dedicate to the public use of the State of Michigan, as a public street, the strip of land shown on the inclosed plat, and the same shall be known as SOUTH MAIN WOODS. The south ten acres of east half, east half, southwest quarter Section 5, T. 35, R. 6 E., Washtenaw County, Michigan, and the same shall be known as SOUTH MAIN WOODS. The strip of land shown on the inclosed plat shall be known as SOUTH MAIN WOODS. The strip of land shown on the inclosed plat shall be known as SOUTH MAIN WOODS.

CERTIFICATE OF APPROVAL BY BOARD OF COUNTY ROAD COMMISSIONERS: This plat has been examined and was approved on the 26th day of July, 1940, by the Washtenaw County Board of Road Commissioners.

Clark Ferguson Chairman
W. J. Frisinger Member

COUNTY TREASURER'S CERTIFICATE RELATING TO TAXES: I, County Treasurer, Washtenaw County, hereby certify that there are No tax liens or titles sold by the State on the lands inclosed herein, and that there are No tax liens or titles sold by individuals on said lands for the five years preceding August 1, 1940 and that the taxes for said period of five years are paid and as shown in the records of this office.

Charles E. Crittenden
 Charles E. Crittenden, County Treasurer.

CERTIFICATE OF MUNICIPAL APPROVAL: This plat was approved by the Township Board of the Township of Pittsfield, Michigan, on the 26th day of July, 1940.

W. J. Frisinger Chairman

CERTIFICATE OF APPROVAL BY THE BOARD OF COUNTY AUDITORS: Approved by the Board of County Auditors, Washtenaw County, Michigan, this FIFTEENTH day of MARCH, 1940.

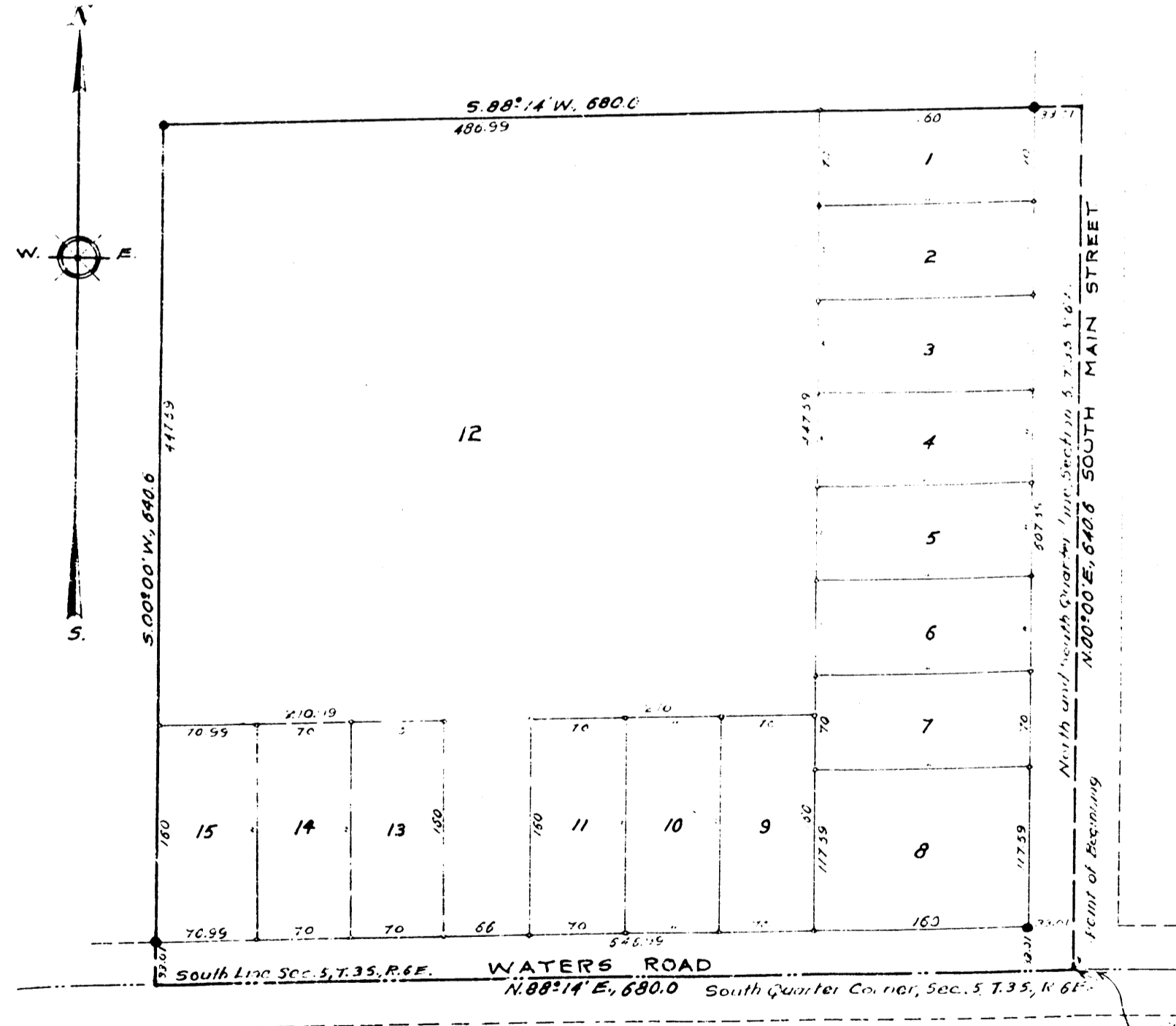
W. J. Frisinger Chairman
W. J. Frisinger Member

CERTIFICATE AS TO COUNTY ROADS: We being duly sworn, this plat appears to include any existing county road.

W. J. Frisinger Chairman
W. J. Frisinger Member

REGISTERED DEEDS:
 This plat was recorded on the 27th day of August, A. D. 1940.
10:15 clock P. M. and recorded in Book 10 of Plats in my office.
Katherine W. Skau
 Registrar of Deeds

NOTE: All Dimensions are Given in Feet and Decimals Thereof

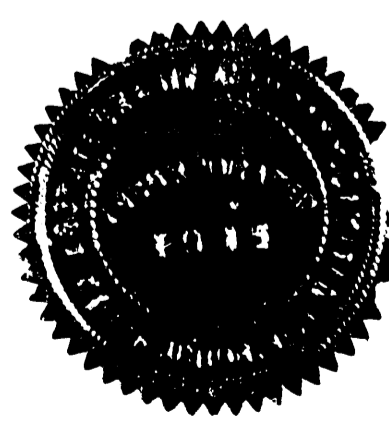


Frank A. Stevens
Helen E. Wagner
William E. Watrous

John W. Rae
Milton Cooper

STATE OF MICHIGAN
 County of Washtenaw
 I, Clerk of the Court, do hereby certify that the within and foregoing instrument, bearing date the 26th day of July, 1940, and signed by Frank A. Stevens, Helen E. Wagner and William E. Watrous, being personally seen and being read by me duly sworn, and that the said Frank A. Stevens, Helen E. Wagner and William E. Watrous, respectively, are the Interstate Credit Company, a partnership, and that the seal affixed to said instrument is the corporate seal of said corporation and that said instrument was signed and sealed in behalf of said corporation by authority of its Board of Directors and the said Frank A. Stevens, Helen E. Wagner and William E. Watrous acknowledged said instrument to be the free act and deed of said corporation.
Mildred Ball
 My Commission expires the 26th day of July, 1940.

Witnesses:
 John E. M. 5' N 31° E, 40.5
 Arthur 14' S 21° E, 40.5
 M. H. 14' N 17° W, 25.5



Examined and Approved
W. J. Frisinger
 Wayne Joseph, Clerk of Board of County Commissioners

ORIGINAL