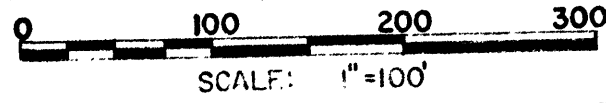
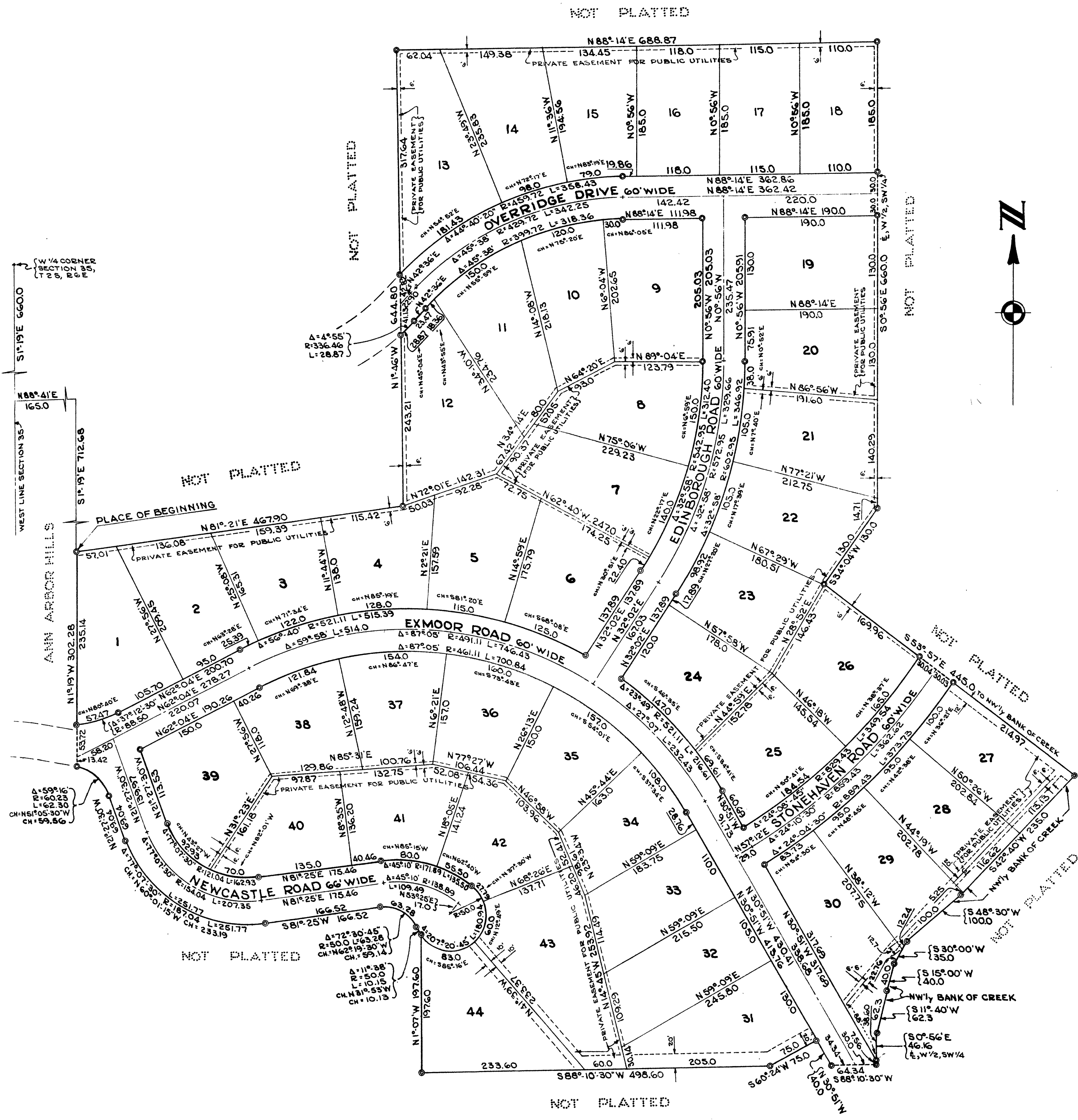


WOODHAVEN HILLS

A SUBDIVISION OF PART OF THE SW 1/4 OF SECTION 35, T2S, R6E, CITY OF ANN ARBOR, WASHTENAW COUNTY MICHIGAN

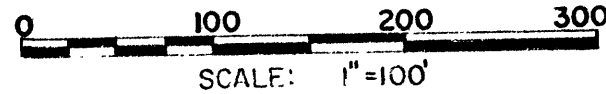


ALL DIMENSIONS IN FEET AND DECIMALS THEREOF
ALL DIMENSIONS ON CURVES ARE ARC LENGTHS
SURVEY BY ATWELL-HICKS, INC.



WOODHAVEN HILLS

A SUBDIVISION OF PART OF THE SW 1/4 OF SECTION 35, T2S, R6E, CITY OF ANN ARBOR, WASHTENAW COUNTY MICHIGAN



ALL DIMENSIONS IN FEET AND DECIMALS THEREOF
ALL DIMENSIONS ON CURVES ARE ARC LENGTHS
SURVEY BY ATWELL-HICKS, INC.

DEDICATION

KNOW ALL MEN BY THESE PRESENTS, that I Joseph Lawry doing business as the Lawry Construction Company, and Margaret E. Lawry, his wife, Marcel Meersseman and Marion Meersseman, his wife, Donald S. Lowe and Emily B. Lowe, his wife as proprietors, have caused the land embraced in the annexed plat to be surveyed, laid out and platted to be known as WOODHAVEN HILLS, a subdivision of part of the SW 1/4 of Section 35, T2S, R6E, City of Ann Arbor, Washtenaw County, Michigan and that the roads and drive as shown on said plat are hereby dedicated to the use of the public.

Signed and Sealed
in the Presence of:

Wendell W. Hobbs Witness *Joseph Lawry*
Wendell W. Hobbs Witness Joseph Lawry
Ruth J. Hobbs Witness *Margaret E. Lawry*
Ruth J. Hobbs Witness Margaret E. Lawry
Marcel Meersseman
Marcel Meersseman
Marion Meersseman
Marion Meersseman
Donald S. Lowe
Donald S. Lowe
Emily B. Lowe
Emily B. Lowe

Filed for Record
October 4, 1960
October 10, 1960
October 4, 1960
By *D. F. MacEwen*
Notary Public

Recorded this 5th day of
October 1960 at 11:04 AM
in Book 15 of Plate
Patricia Newkirk Hardy
County Register of Deeds

SURVEYOR'S CERTIFICATE

I hereby certify that the plat hereon delineated is a correct one and that permanent metal monuments consisting of bars not less than one-half inch in diameter and 36 inches in length, or shorter bars of not less than one-half inch in diameter lapped over each other at least 6 inches with an over-all length of not less than 36 inches, encased in a concrete cylinder at least 4 inches in diameter and 36 inches in depth have been placed at points marked thus (@) as thereon shown at all angles in the boundaries of the land platted, at all the intersections of streets, intersections of alleys, or of streets and alleys, and at the intersections of streets and alleys with the boundaries of the plat as shown on said plat.

Robert J. Jagow
Robert J. Jagow
Registered Land Surveyor # 6798

CERTIFICATE OF APPROVAL BY THE CITY PLANNING COMMISSION

This plat was approved by the Planning Commission of the City of Ann Arbor, Michigan at a meeting held on the 13th day of September, 1960.

Richard A. Ware
Richard A. Ware, Chairman
William J. Bott
William J. Bott, Secretary

CERTIFICATE OF MUNICIPAL APPROVAL

This plat was approved by the Common Council of the City of Ann Arbor at a meeting held on the 13th day of September, 1960, and that the width of lots is in compliance with requirements of Section 30, Act 172, of 1929, as amended.

Fred J. Looker
Fred J. Looker, Clerk

COUNTY TREASURER'S CERTIFICATE

I hereby certify, that there are no tax liens or titles held by the State on the lands described hereon, and that there are no tax liens or titles held by individuals on said lands for the five years preceding the 30th day of September 1960, and that the taxes for said period of five years are all paid, as shown by the records of this office. This certificate does not apply to taxes, if any, now in process of collection by township, city or village collecting officer.

W. F. Verner
W. F. Verner, County Treasurer

APPROVAL BY COUNTY PLAT BOARD

This plat was approved on the 30th day of September, 1960, by the Washtenaw County Plat Board.

Patricia Newkirk Hardy John H. Flook
Patricia Newkirk Hardy (County Register of Deeds) (County Drain Commissioner)
J. Martin Rempp Herbert G. Loeffler
J. Martin Rempp (Auditor) Herbert G. Loeffler (Auditor)
John P. Cook
John P. Cook (Auditor)

ACKNOWLEDGMENT

STATE OF MICHIGAN)
) ss.
County of Washtenaw)

On this 12th day of September, A.D., 1960, before me, a Notary Public in and for said County, personally came Joseph Lawry, Margaret E. Lawry, Marcel Meersseman, Marion Meersseman, Donald S. Lowe and Emily B. Lowe known to me to be the persons who executed the above dedication, and acknowledged the same to be their free act and deed.

Wendell W. Hobbs
Wendell W. Hobbs
Notary Public, Washtenaw County, Michigan
My Commission expires February 4, 1962.

DESCRIPTION OF LAND PLATED

The land embraced in the annexed plat of WOODHAVEN HILLS a subdivision of part of the SW 1/4 of Section 35, T2S, R6E, City of Ann Arbor, Washtenaw County, Michigan is described as follows:
Commencing at the W 1/4 corner of Section 35, T2S, R6E, City of Ann Arbor, Washtenaw County, Michigan; thence along the West line of said Section 35, S 1°-19' E 660.0 feet; thence N 88°-41' E 165.0 feet; thence S 1°-19' E 712.68 feet for a PLACE OF BEGINNING; thence N 81°-21' E 467.9 feet; thence N 1°-46' W 644.8 feet; thence N 88°-14' E 688.87 feet; thence S 0°-56' E 660.0 feet; thence S 34°-04' W 130.0 feet; thence S 53°-57' E 445.0 feet; thence S 42°-40' W 235.0 feet; thence S 48°-30' W 100.0 feet; thence S 30°-00' W 35.0 feet; thence S 15°-00' W 40.0 feet; thence S 11°-40' W 62.3 feet; thence S 0°-56' E 46.16 feet; thence S 88°-10'-30" W 64.34 feet; thence N 30°-51' W 40.0 feet; thence S 60°-24' W 75.0 feet; thence S 88°-10'-30" W 498.6 feet; thence N 1°-07' W 197.6 feet; thence 10.15 feet in the arc of a circular curve concave to the NE, radius 50.0 feet, chord N 31°-53' W 10.13 feet; thence 63.28 feet in the arc of a circular curve concave to the SW, radius 50.0 feet, chord N 62°-19'-30" W 59.14 feet; thence S 81°-25' W 166.52 feet; thence 251.77 feet in the arc of a circular curve concave to the NE, radius 187.04 feet, chord N 60°-01'-15" W 233.19 feet; thence N 21°-27'-30" W 69.04 feet; thence 62.30 feet in the arc of a circular curve concave to the SW, radius 60.23 feet, chord N 51°-05'-30" W 59.56 feet; thence N 1°-19' W 302.28 feet to the Place of Beginning, containing 44 Lots numbered 1 through 44 inclusive.