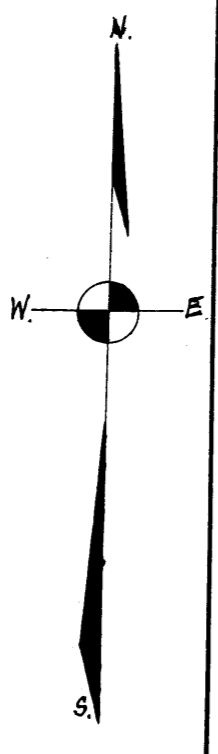


June 15-1931
 J. S. Hanna

"BALDWIN PLACE"

A SUBDIVISION OF
 A PART OF LOTS 103, 104 AND 105,
 OF J. D. BALDWIN'S THIRD ADDITION TO
 THE CITY OF ANN ARBOR,
 WASHTEWAW COUNTY, MICHIGAN.
 SCALE: ONE INCH = FORTY FEET.



TAX CERTIFICATE OFFICE OF THE COUNTY TREASURER WASHTEWAW COUNTY, MICHIGAN

I hereby certify, That there are 10 tax liens of titles here-
 by the State on the lands described above, and that there are 10
 tax liens or titles held by the individuals on said lands for the
 five years preceding the 16th day of MAY 1927,
 and that the taxes for said period of five years are paid,
 as shown by the records of this office.

.....
 Frank A. Ticknor
 County Treasurer.

CERTIFICATE OF APPROVAL BY THE COMMON COUNCIL

This plat was approved by the Common Council of the City of
 Ann Arbor, Washtenaw County, Michigan, at a meeting held.....
 ..June 15, 1931.....

.....
 Isaac G. Reynolds
 Clerk

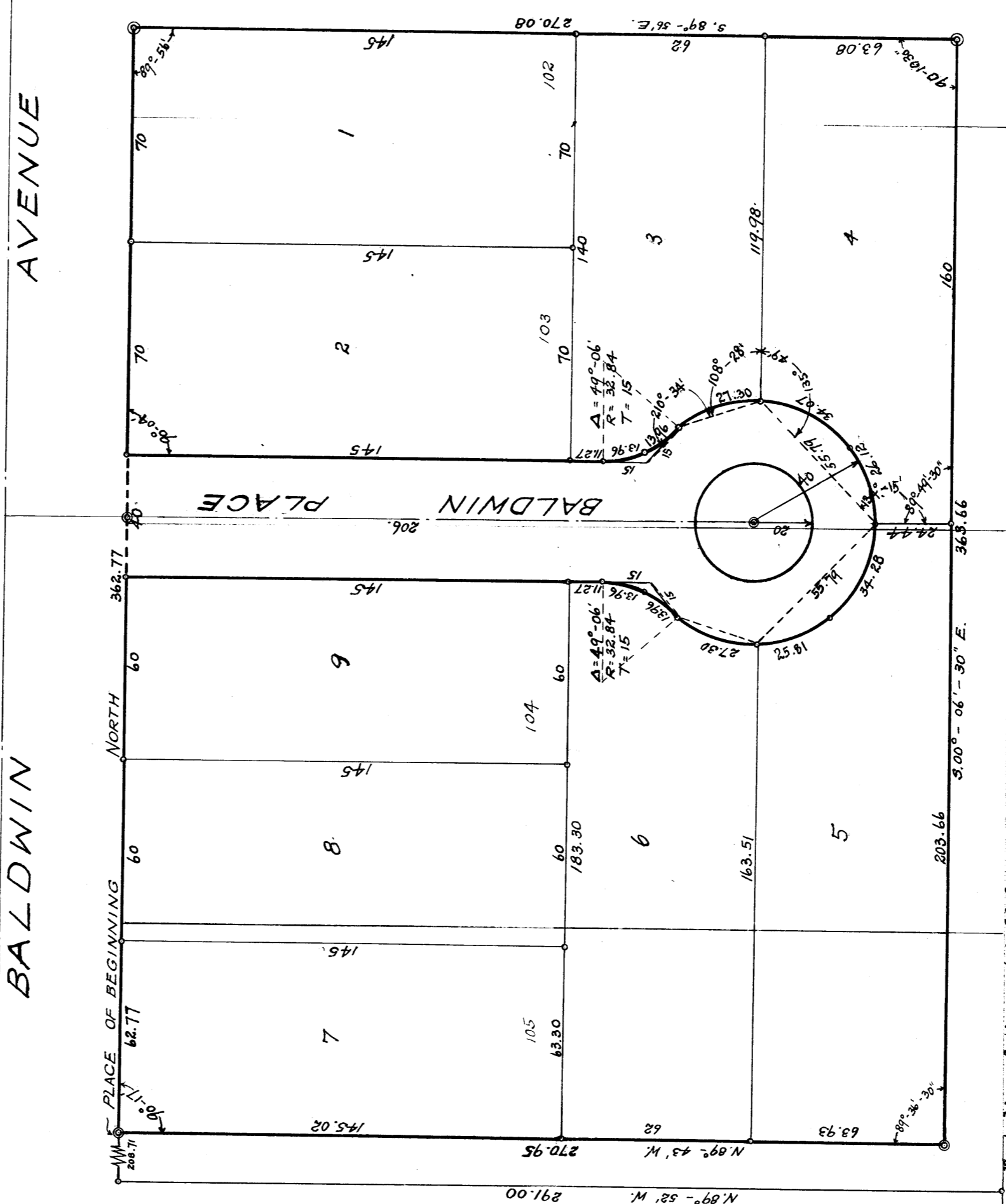
CERTIFICATE OF APPROVAL BY THE BOARD OF PUBLIC WORKS

This plat was approved by the Board of Public Works of the City of
 Ann Arbor, Washtenaw County, Michigan, at a meeting held.....
 ..May 18, 1931.....

.....
 Isaac A. Reynolds
 Clerk

DESCRIPTION

The land embraced in the annexed plat of "BALDWIN PLACE" is
 a subdivision of a part of Lots 103, 104 and 105, of
 J. D. Baldwin's Third Addition to the City of Ann Arbor,
 Washtenaw County, Michigan, is described as follows:
 Commencing at the southwest corner of the east half
 of the northeast quarter of section 33, Town two south, Range
 six east, Washtenaw County, Michigan; thence north along the
 west line of the east half of the northeast quarter of section
 33, 673.26 feet to an iron pipe, said course being along one
 of the boundary lines of "Assessor's Plat Number One" of Fardon
 Addition to the City of Ann Arbor; thence N 89°-52' E. along
 another boundary of said Assessor's Plat Number One 291.00 feet
 to an iron pipe at the intersection of the south line of Wells
 Street with the east line of Baldwin Avenue; thence north along
 the east line of Baldwin Avenue 208.71 feet to an iron pipe
 FOR A PLACE OF BEGINNING; thence continuing north along said
 east line 362.77 feet to an iron pipe monument; thence S. 89°-56' E.
 270.08 feet to an iron pipe monument; thence S. 00°-06' - 30" E.
 363.65 feet to an iron pipe monument; thence N. 89°-43' W. 270.95
 feet to the place of beginning.



West line of the east half of the northeast quarter, section 33, T. 2 S., R. 6 E.,
 Southwest corner of the east half of the northeast quarter, section 33, T. 2 S., R. 6 E.

Note: All dimensions are given in feet and decimals thereof.

DEDICATION

KNOW ALL MEN BY THESE PRESENTS, That we Louis P. Hall and Elizabeth D. Hall, husband and wife, as proprietors have caused the land embraced in the annexed plat to be surveyed laid out and platted, to be known as "BALDWIN PLACE" a subdivision of a part of Lots 103, 104 and 105, of J. D. Baldwin's Third Addition to the City of Ann Arbor, Washtenaw County, Michigan, and that the streets as shown on said plat are hereby dedicated to the use of the public.

SIGNED AND SEALED IN PRESENCE OF:

.....
 H. H. Atwell
 Louis P. Hall
 Elizabeth D. Hall (as)

STATE OF MICHIGAN }
 COUNTY OF WASHTEWAW }

On this 16th day of May, 1927, before me a Notary Public in and for said County, personally came the above named Louis P. Hall and Elizabeth D. Hall, husband and wife, known to me to be the persons who executed the above dedication and acknowledged the same to be their free act and deed.

.....
 Louis P. Hall
 Notary Public, Washtenaw County, Michigan.
 My commission expires 10th day of SEP 1929.

CERTIFICATE OF APPROVAL BY THE BOARD OF COUNTY AUDITORS

This plat was approved by the Board of County Auditors of Washtenaw County, Michigan this 1st day of June, 1931.

 Samuel S. Hamilton
 Chairman.
 Elmer A. Bremer

SURVEYOR'S CERTIFICATE

I hereby certify, That the plat hereon delineated is a correct one and that permanent metal monuments of not less than one inch in diameter and fifteen inches in length set in a concrete base at least four inches in diameter and forty-eight inches in depth have been placed at points marked thus © as thereon shown at all angles in the boundaries of the land platted, at all intersections of streets, intersections of alleys, or of streets and alleys, and at the intersections of streets and alleys with the boundaries of the plat as shown on said plat.

.....
 H. H. Atwell
 Registered Civil Engineer.

Washtenaw
 Baldwin Place
 June 9 1931
 John S. Cunningham
 June 15-1931
 J. S. Hanna