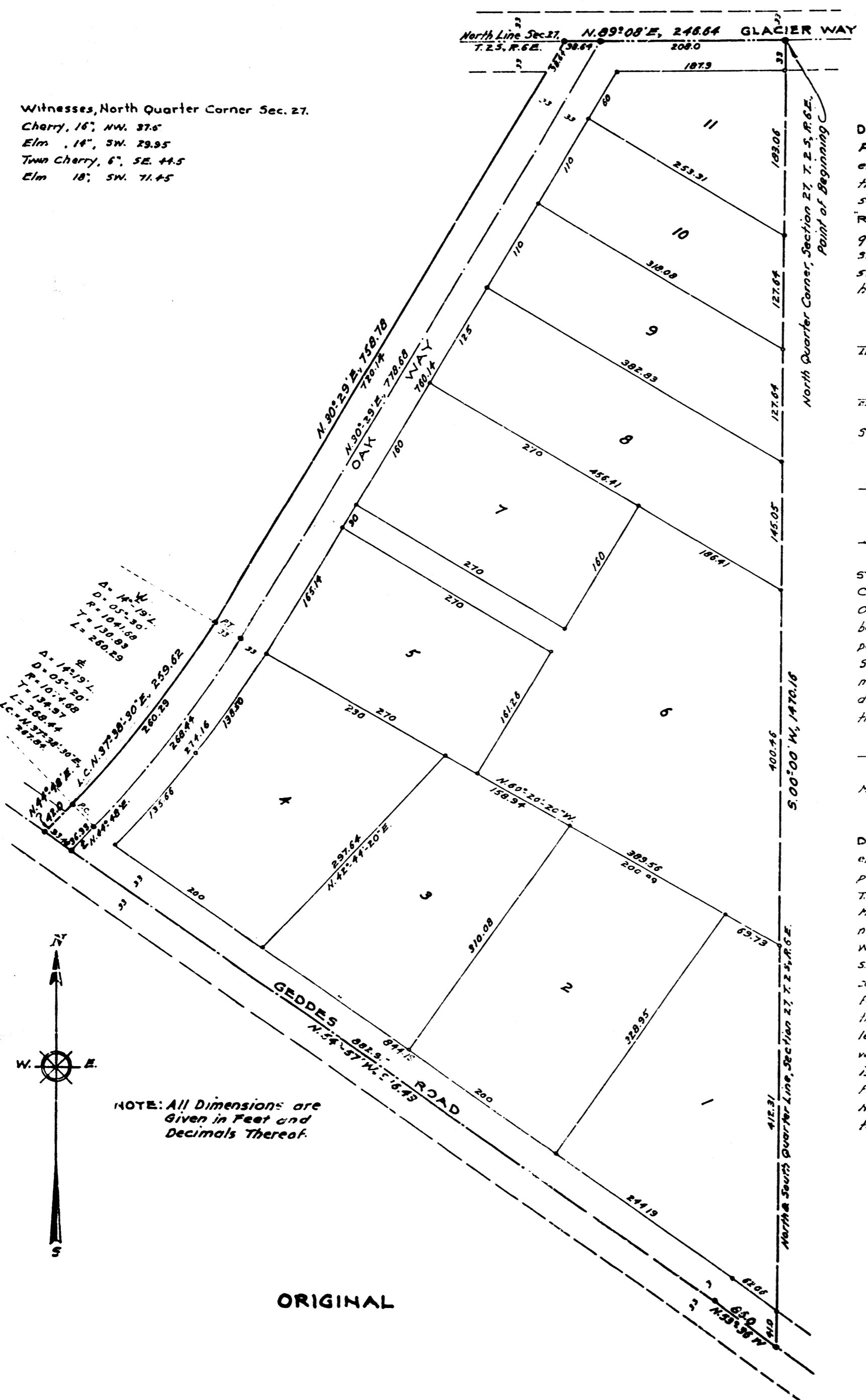


"RIVER VIEW"

A PART OF NORTHWEST FRACTIONAL QUARTER SECTION 27, T.2S, R.6E
ANN ARBOR TOWNSHIP, WASHTENAW COUNTY, MICHIGAN
Scale 1 inch = 100 feet.



Witnesses, North Quarter Corner Sec. 27.
 Cherry, 16", NW. 37.5
 Elm, 14", SW. 29.95
 Twin Cherry, 6", SE. 44.5
 Elm, 18", SW. 71.45

DEDICATION: KNOW ALL MEN BY THESE PRESENTS, That we Lloyd G. Steiner as proprietor, and Elvina M. Steiner, his wife, have caused the land embraced in the annexed plat to be surveyed, laid out and platted, to be known as "RIVER VIEW", a part of northwest fractional quarter, section 27, T. 2 S., R. 6 E., Ann Arbor Township, Washtenaw County, Michigan, and that the streets and alleys as shown on said plat are hereby dedicated to the use of the public.

Lloyd G. Steiner (L.S.)
Elvina M. Steiner (L.S.)

Signed and Sealed in Presence of
A. Geraldine Gauss
Helen Wiess
 Helen Wiess

STATE OF MICHIGAN 55
 County of Washtenaw
 On this 5th day of March, 1940,
 before me, a Notary Public in and for said county, personally came the above named Lloyd G. Steiner and Elvina M. Steiner, his wife, known to me to be the persons who executed the above dedication, and acknowledged the same to be their free and lawful deed.
Otto E. Leeb
 Otto E. Leeb, Notary Public, Washtenaw Co., Mich.
 My Commission expires April 22, 1942.

DESCRIPTION OF LAND PLATTED: The land embraced in the annexed plat of RIVER VIEW, a part of northwest fractional quarter, section 27, T. 2 S., R. 6 E., Ann Arbor Township, Washtenaw County, Michigan, is described as follows: Beginning at the north quarter corner of section 27, T. 2 S., R. 6 E., Washtenaw County, Michigan, and running thence 500'00" W. along the north and south quarter line of said section 27 for 1470.16 feet; thence N. 53° 36' W. for 86.0 feet; thence N. 54° 57' W. for 916.43 feet; thence N. 44° 48' E. for 42.0 feet; thence on a curve left whose long chord bears N. 37° 30' 30" E., 259.62 feet, whose radius is 124.83 feet and whose central angle is 14° 19'; or 260.29 feet; thence N. 30° 29' E. for 758.78 feet to the north line of said section 27; thence N. 83° 08' E., along said north line for 248.64 feet to the point of beginning.

SURVEYOR'S CERTIFICATE: I hereby certify that the plat hereon delineated is a correct one and that permanent metal monuments consisting of bars not less than one half inch in diameter and 48 inches in length, encased in a concrete cylinder at least 4 inches in diameter and 48 inches in depth have been placed at points marked thus ● as there are shown at all angles in the boundaries of the land platted, at all the intersections of streets, intersections of alleys, or of streets and alleys, and at the intersections of streets and alleys with the boundaries of the plat as shown on said plat.

Harry J. Krasch
 Harry J. Krasch, Registered Professional Engineer.

CERTIFICATE OF APPROVAL BY THE BOARD OF COUNTY ROAD COMMISSIONERS:
 This plat has been examined and was approved on the 8th day of March, 1940 by the Washtenaw County Board of Road Commissioners.

Clark E. Ferguson Chairman
George Gill Member
H. L. Frisinger Member

CERTIFICATE OF MUNICIPAL APPROVAL:
 This plat was approved by the Township Board of the Township of Ann Arbor at a meeting held March 6, 1940.

Edward W. Fredericks Clerk

CERTIFICATE OF APPROVAL BY THE BOARD OF COUNTY AUDITORS: Approved by the Board of County Auditors of Washtenaw County, Michigan, this SIXTH day of MARCH, 1940.

H. Donald Reed Chairman
Otto E. Leeb
Elmer L. Brown

COUNTY TREASURERS CERTIFICATE RELATING TO TAXES
 Office of County Treasurer, Washtenaw County.
 I hereby certify, That there are no tax liens or titles held by the State on the lands described hereon, and that there are no tax liens or titles held by individuals on said lands, for the five years preceding the 5 day of March, 1940 and that the taxes for said period of five years are paid, as shown by the records of this office.
 This certificate does not apply to taxes, if any, now in process of collection by township, city or village collecting officers.

Elmer L. Brown
 Elmer L. Brown, County Treasurer.

CERTIFICATE AS TO COUNTY ROADS: We hereby certify that said plat appears to include land located on a county road.

H. Donald Reed Chairman
Otto E. Leeb
Elmer L. Brown Board of County Auditors

NOTE: All Dimensions are Given in Feet and Decimals Thereof.

ORIGINAL

Examined and Approved
March 19, 1940
Mayne J. Gaddy Deputy Auditor General

RECEIVED FOR RECORD, the 22nd day of March, A. D. 1940 at 8:45 o'clock A. M. and recorded in Liber 9 of Plats on page 56
Katherine W. Stearns
 Register of Deeds