

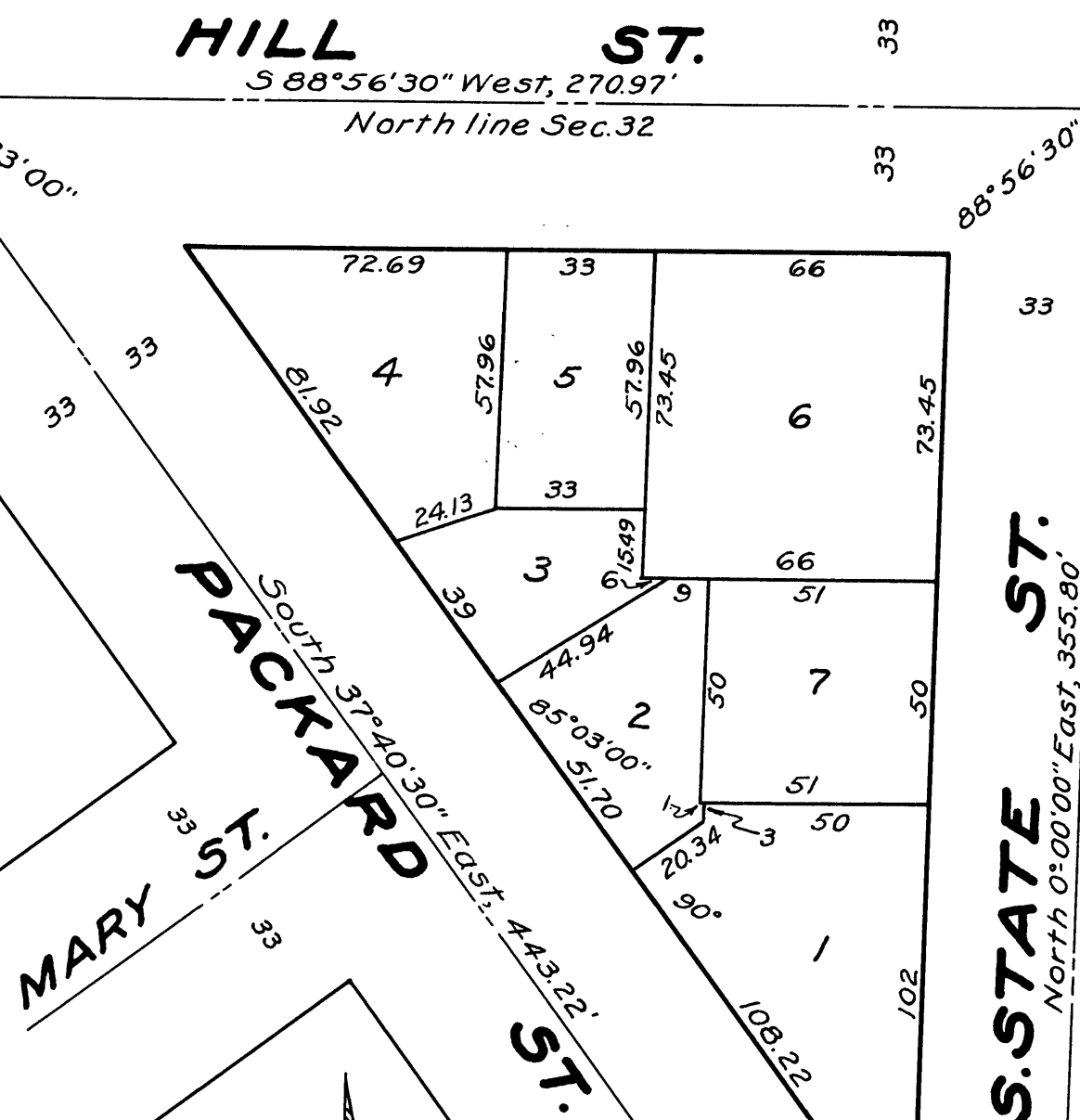
"ASSESSOR'S PLAT No. 34"

A PART OF THE NORTH EAST QUARTER OF SECTION 32, TOWN 2 SOUTH, RANGE 6 EAST, WASHTENAW COUNTY, MICHIGAN.

CITY OF ANN ARBOR
WASHTENAW CO., MICHIGAN.

Scale: One Inch = Forty Feet
0 10 40 80 120

Note: All dimensions are given in feet and decimals thereof.



DEDICATION

KNOW ALL MEN BY THESE PRESENTS: That I, Herbert W. Crippen, Assessor of the City of Ann Arbor, Washtenaw County, Michigan, by virtue of authority in me vested by Sec. 51, Act. 172, P.A. of 1929, having been duly authorized by the Common Council of the City of Ann Arbor, Washtenaw Co., Michigan have caused the land described in the annexed plat to be surveyed, laid out and platted to be known as "Assessor's Plat No. 34" a part of the North East Quarter of Section 32, Town 2 South, Range 6 East, Washtenaw County, Michigan and that the streets and alleys as shown on said plat are now being used for such purposes.

(Herbert W. Crippen) Herbert W. Crippen
Assessor of the City of Ann Arbor
Washtenaw Co., Michigan.

Witnesses:

Johanna Vogel
EMMA LUTZ

ACKNOWLEDGMENT

STATE OF MICHIGAN } ss.
COUNTY OF WASHTENAW }

On this 1 day of May, A.D. 1939, before me a Notary Public, in and for said county personally came the above named Herbert W. Crippen, Assessor of the City of Ann Arbor, Washtenaw Co., Michigan, known to me to be the person who executed the above dedication and acknowledged

(Clara M. Mast) Clara M. Mast
Notary Public in and for
Washtenaw Co., Michigan.

My Commission expires June 21, 1940

DESCRIPTION

The land embraced in the annexed "Assessor's Plat No. 34," a part of the North East Quarter of Section 32, Town 2 South, Range 6 East, Washtenaw County, Michigan is described as follows, beginning at the North East corner of Section 32, Town 2 South, Range 6 East, Washtenaw County, Michigan which section corner is the intersection of the center lines of Hill St. and South State St. in the City of Ann Arbor, thence S. 88°56'30"W, 270.97 feet, on the center line of Hill St., thence S. 37°40'30"E, 443.22 feet, on the center line of Packard St., thence N. 0°00'00"E, 355.80 feet, on the center line of S. State St., to the place of beginning.

SURVEYOR'S CERTIFICATE

I hereby certify that the plat hereon delineated is a correct one and that permanent metal monuments of not less than one inch in diameter and fifteen inches in length set in a concrete base at least four inches in diameter and forty eight inches in depth have been placed at all points marked thus © as hereon shown at all angles in the boundaries of the land platted, at the intersections of streets, intersections of streets and alleys or of alleys and at the intersections of streets and alleys with the boundaries of the plat as shown on said plat.

(George H. Sandenburgh) George H. Sandenburgh
Registered Land Surveyor.

CERTIFICATE OF MUNICIPAL APPROVAL

This plat was approved by the Common Council of the City of Ann Arbor, Washtenaw Co., Michigan at a meeting held this 1 day of May, 1939.

(Fred C. Perry) Fred C. Perry
City Clerk

This plat was approved by the Board of Public Works of the City of Ann Arbor, Washtenaw Co., Michigan at a meeting held this 1 day of May, 1939.

(Fred C. Perry) Fred C. Perry
City Clerk

CERTIFICATE OF APPROVAL BY THE BOARD OF COUNTY AUDITORS

Approved by the Board of County Auditors of Washtenaw County, Michigan this 12 day of May, 1939.

(H. Donald Reed) H. Donald Reed
Chairman

(OTTO D. LUICK) Otto D. Luick

(ELMER L. BROWN) Elmer L. Brown

Examined and Approved

G.T. Hartman
G.T. HARTMAN Deputy Auditor General

I HEREBY CERTIFY THAT THIS COPY IS A TRUE COPY OF THE MAP OR PLAT FORWARDED THE REGISTER OF DEEDS FOR RECORDING.

COMPARED 5/25/39
G.T. Hartman
G.T. HARTMAN DEPUTY AUDITOR GENERAL

FILED IN AUDITOR GENERAL'S DEPT

5/31/39
G.T. Hartman
G.T. HARTMAN DEPUTY AUDITOR GENERAL

Register's Office
Washtenaw County, } ss.
Plat of Assessor's Plat No. 34
City of Ann Arbor
was recorded this 27 day of
May, A.D., 1939, at 9:30 O'clock
A.M. in Liber 9 of Plate
Page 50
Katherine K. Skew
Register of Deeds
ORIGINAL ON FILE