

DEDICATION

KNOW ALL MEN BY THESE PRESENTS, That I, Martha Baluss, a widow as proprietor, have caused the land embraced in the annexed plat to be surveyed, laid out and platted, to be known as FAIR-ACRES a subdivision in the north east one quarter, section 21, T25, R6E, Ann Arbor Twp., Washtenaw County, Michigan, and that the street as shown on said plat is hereby dedicated to the use of the public.

Signed and Sealed in Presence of
Elizabeth Slack
Martha Baluss
R.C. Eastman

STATE OF MICHIGAN } ss
COUNTY OF WASHTENAW }
On this 18 day of October AD. 1946 before me, a Notary Public in and for said county, personally came the above named Martha Baluss a widow known to me to be the person who executed the above dedication and acknowledged the same to be her free act and deed.

Fred J. Looker
Notary Public, Washtenaw County, Michigan
My Commission expires May 7 1948

CERTIFICATE OF MUNICIPAL APPROVAL

This plat was approved by the Common Council of the city of Ann Arbor at a meeting held Dec 2 1946

Fred C. Perry
Fred C. Perry Clerk

CERTIFICATE OF APPROVAL BY BOARD OF PUBLIC WORKS

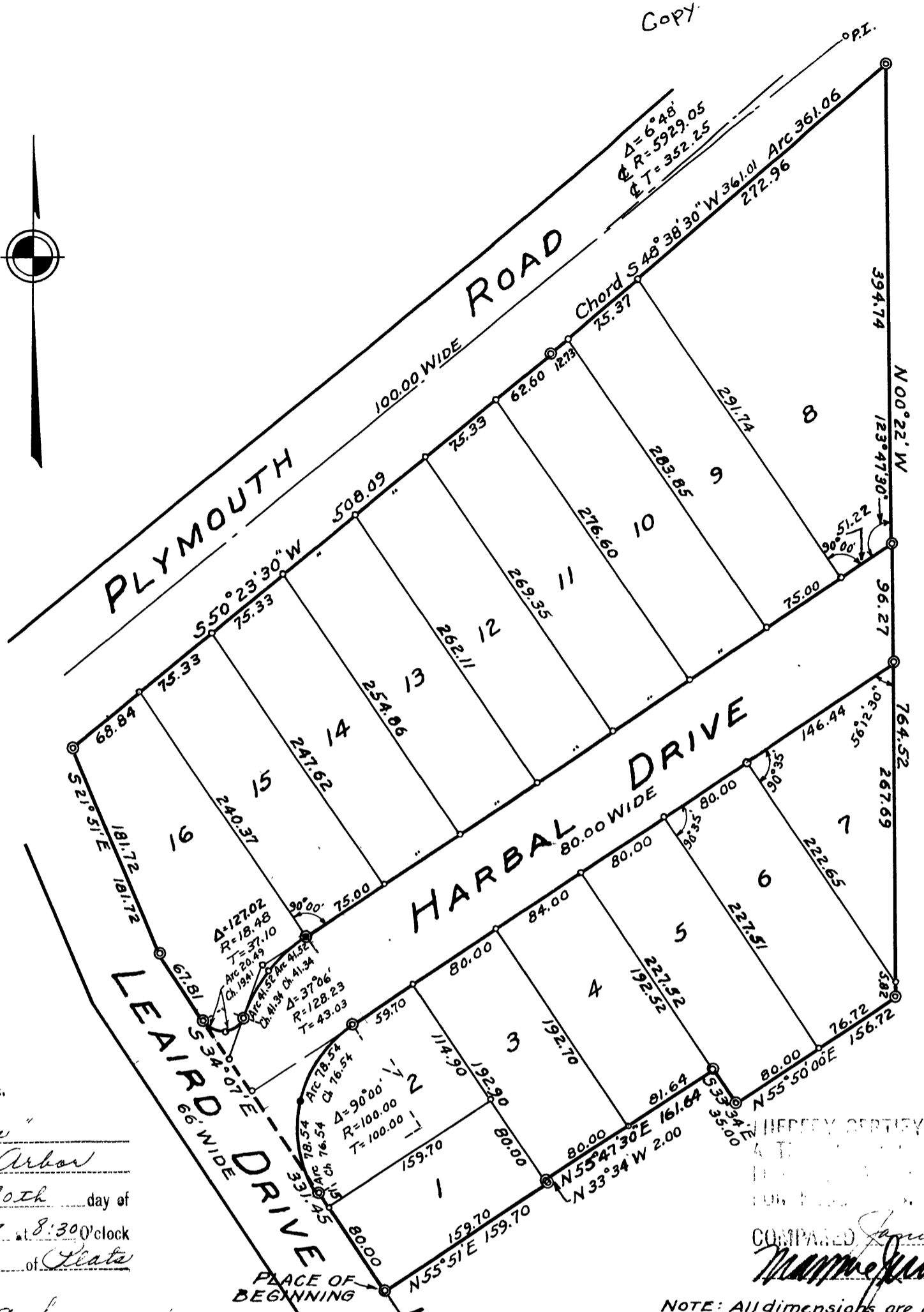
This plat was approved by the Board of Public Works of the city of Ann Arbor, at a meeting held Dec 4 1946

Fred C. Perry
Fred C. Perry Clerk

CERTIFICATE OF APPROVAL BY CITY PLANNING COMMISSION

This plat was approved by the City Planning Commission of the city of Ann Arbor, at a meeting held Oct 22 1946

Milton Kendrick
Milton Kendrick, Chairman
Samuel D. Porter
Samuel D. Porter, Secretary



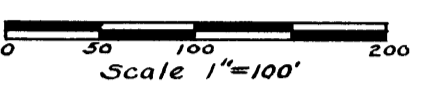
Surveyor's Certificate
I hereby certify that the plat hereon delineated is a correct one and that permanent metal monuments of not less than one-half inch in diameter and forty-eight inches in length set in a concrete base at least four inches in diameter and forty-eight inches in depth have been placed at points marked thus: ⊙, as shown thereon at all angles in the boundaries of the land platted, at all the intersections of streets, and at the intersections of streets with the boundaries of the plat as shown on said plat.
Geo. M. Bleekman
Geo. M. Bleekman Registered Land Surveyor

COUNTY TREASURER'S CERTIFICATE RELATING TO TAXES

Office of County Treasurer, Washtenaw County.
I hereby certify, That there are No tax liens or titles held by the state on the lands described hereon, and that there are No tax liens or titles held by individuals on said lands, for the five years preceding the 26th day of November, 1946 and that the taxes for said period of five years are paid, as shown by the records of this office.
This certificate does not apply to taxes, if any, now in process of collection by township, city or village collecting officers.
Clyde D. Fleming
Clyde D. Fleming County Treasurer

FILED IN AUDITOR GENERAL'S DEPT.
January 23 1947
Jewel L. Purdy Deputy Auditor General

FAIR-ACRES
A SUBDIVISION IN THE NORTH EAST ONE QUARTER, SECTION 21, T25, R6E, ANN ARBOR TOWNSHIP, CITY OF ANN ARBOR, WASHTENAW COUNTY, MICHIGAN



DESCRIPTION

The land embraced in the annexed plat of FAIR ACRES a subdivision in the northeast one quarter, section 21, T25, R6E, Ann Arbor Township, City of Ann Arbor, Washtenaw County, Michigan, is described as follows:
Commencing at a monument marking the center of Section 21, Ann Arbor Township, Washtenaw County, Michigan; thence, N87°14'E along the east and west quarter line 564.09 feet to an iron pipe on the north westerly line of Broadway, a street in the city of Ann Arbor, Michigan; thence, N55°53'E along the north westerly line of said Broadway 146.00 feet to an iron pipe marking the intersection of the north westerly line of said Broadway with the north easterly line of Leaird Drive; thence, N34°07'W along the northeasterly line of Leaird Drive 165.00 feet to a concrete monument for a Place of Beginning; thence, N55°51'E, 159.70 feet to a concrete monument; thence, N33°34'W, 2.00 feet to a concrete monument; thence, N55°47'30'E, 161.64 feet to a concrete monument; thence, S33°34'E, 35.00 feet to a concrete monument; thence, N55°50'E, 156.72 feet to a concrete monument; thence, N00°22'W, 764.52 feet to a concrete monument on the southeasterly line of Plymouth Road; thence, southwesterly in the arc of a circular curve of radius 5979.05 feet a distance of 361.06 feet in said arc; (The chord subtended by said arc is 361.01 feet and bears S48°38'30"W) thence, S50°23'30"W along the southeasterly line of Plymouth Road 508.09 feet to a concrete monument; thence, S21°51'E, 181.72 feet to a concrete monument; thence, S34°07'E along the northeasterly line of Leaird Drive 331.45 feet to the Place of Beginning.

CERTIFICATE AS TO STATE TRUNK LINE OR FEDERAL AID ROADS

We hereby certify that said plat appears to include land located on a state trunk line or federal aid road.

J. Martin Rempp
J. Martin Rempp Chairman
L. O. Cushing
John E. Walz
County Plat Board

CERTIFICATE OF APPROVAL BY THE BOARD OF COUNTY AUDITORS

Approved by the Board of County Auditors of Washtenaw County, Michigan this 27th day of December 1946.

J. Martin Rempp
J. Martin Rempp Chairman
L. O. Cushing
John E. Walz