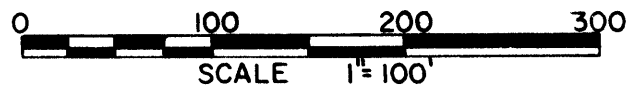
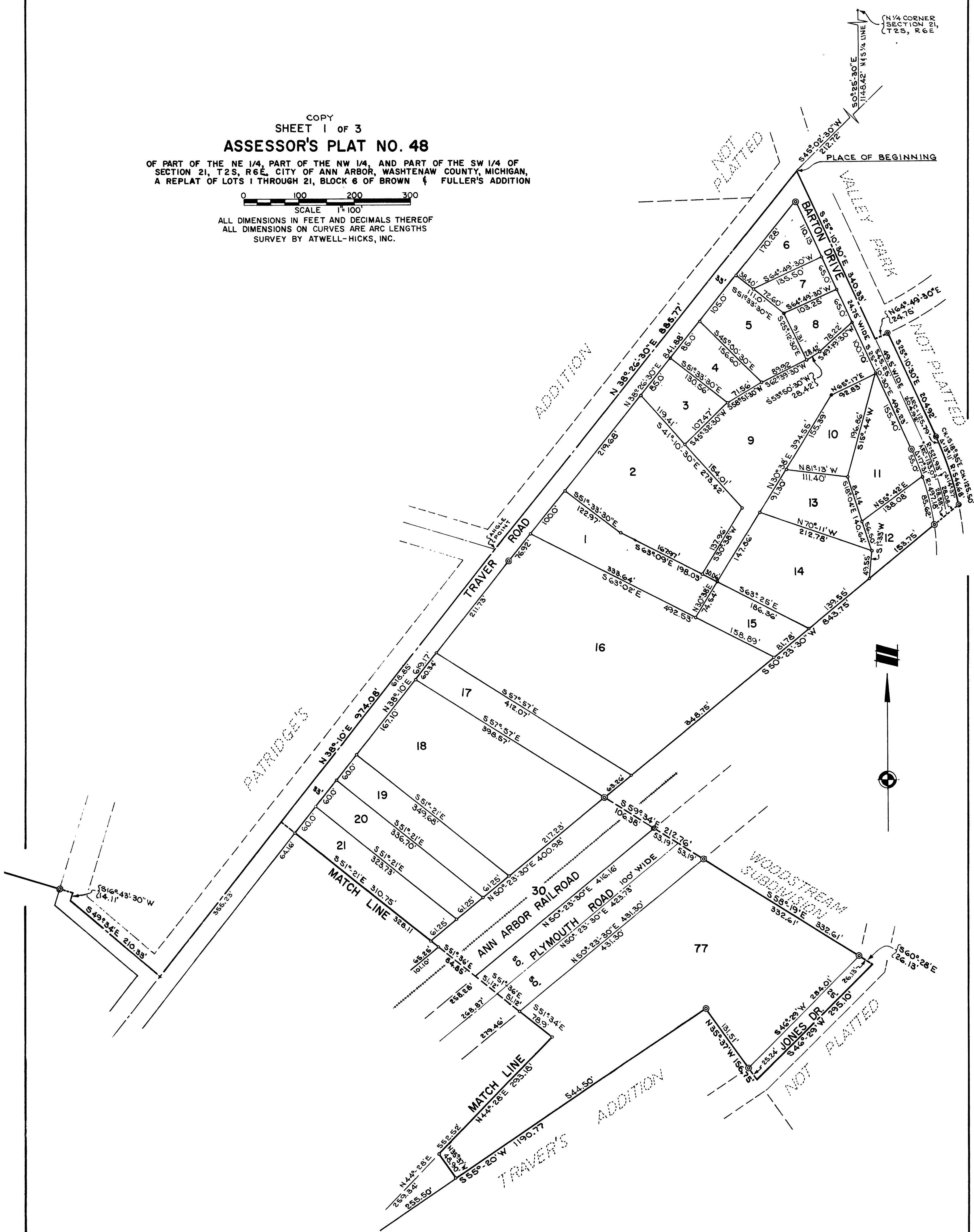


COPY  
SHEET 1 OF 3  
**ASSESSOR'S PLAT NO. 48**

OF PART OF THE NE 1/4, PART OF THE NW 1/4, AND PART OF THE SW 1/4 OF SECTION 21, T2S, R6E, CITY OF ANN ARBOR, WASHTENAW COUNTY, MICHIGAN, A REPLAT OF LOTS 1 THROUGH 21, BLOCK 8 OF BROWN & FULLER'S ADDITION

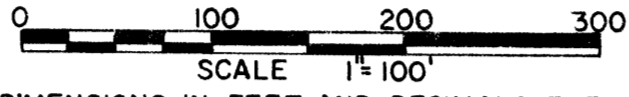


ALL DIMENSIONS IN FEET AND DECIMALS THEREOF  
ALL DIMENSIONS ON CURVES ARE ARC LENGTHS  
SURVEY BY ATWELL-HICKS, INC.

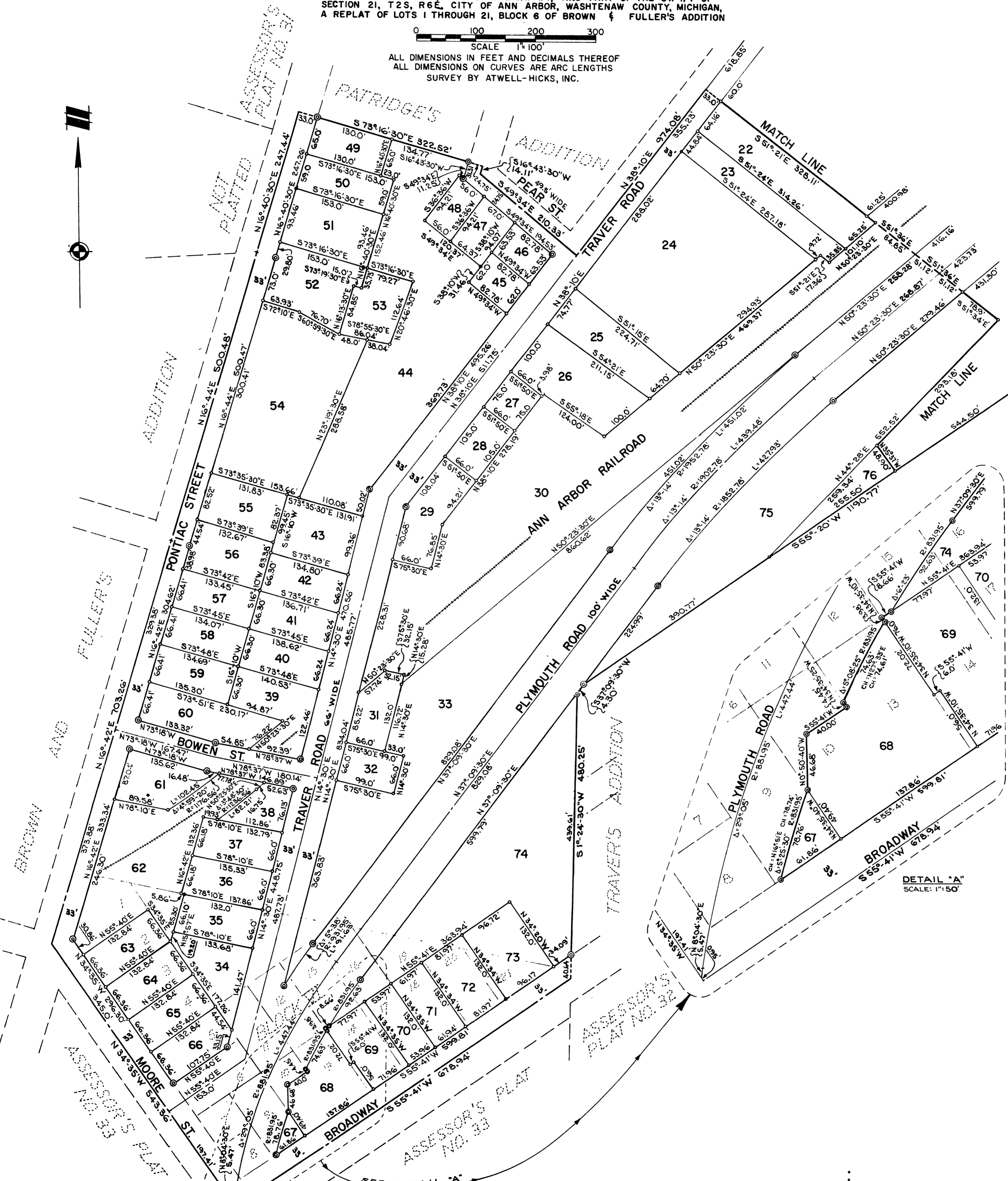


COPY  
SHEET 2 OF 3  
**ASSESSOR'S PLAT NO. 48**

OF PART OF THE NE 1/4, PART OF THE NW 1/4, AND PART OF THE SW 1/4 OF SECTION 21, T2S, R6E, CITY OF ANN ARBOR, WASHTENAW COUNTY, MICHIGAN, A REPLAT OF LOTS 1 THROUGH 21, BLOCK 6 OF BROWN & FULLER'S ADDITION



ALL DIMENSIONS IN FEET AND DECIMALS THEREOF  
ALL DIMENSIONS ON CURVES ARE ARC LENGTHS  
SURVEY BY ATWELL-HICKS, INC.



DETAIL "A"  
SCALE: 1"=50'

COPY  
SHEET 3 OF 3  
ASSESSOR'S PLAT NO. 48

OF PART OF THE NE 1/4, PART OF THE NW 1/4, AND PART OF THE SW 1/4 OF SECTION 21, T2S, R6E, CITY OF ANN ARBOR, WASHTENAW COUNTY, MICHIGAN, A REPLAT OF LOTS 1 THROUGH 21, BLOCK 6 OF BROWN & FULLER'S ADDITION



ALL DIMENSIONS IN FEET AND DECIMALS THEREOF  
ALL DIMENSIONS ON CURVES ARE ARC LENGTHS  
SURVEY BY ATWELL-HICKS, INC.

DESCRIPTION OF LAND PLATTED

The land embraced in the annexed plat of ASSESSOR'S PLAT NO. 48 of part of the NE 1/4, part of the NW 1/4, and part of the SW 1/4 of Section 21, T2S, R6E, City of Ann Arbor, Washtenaw County, Michigan, a replat of Lots 1 through 21, Block 6 of Brown & Fuller's Addition is described as follows: Commencing at the North 1/4 corner of Section 21, T2S, R6E, Ann Arbor Township, Washtenaw County, Michigan; thence along the North and South 1/4 line of said section, S 0°-25'-30" E 1148.42 feet; thence S 45°-02'-30" W 212.72 feet to the center line intersection of Barton Drive and Traver Road for a PLACE OF BEGINNING; thence S 25°-10'-30" E 340.33 feet; thence N 64°-49'-30" E 24.75 feet; thence S 25°-10'-30" E 204.92 feet; thence 125.79 feet along the arc of a circular curve concave to the West, radius 546.68 feet subtended by a chord bearing S 18°-35' E 125.50 feet; thence S 50°-23'-30" W 843.75 feet; thence S 59°-34' E 212.76 feet; thence S 58°-19' E 332.61 feet; thence S 60°-28' E 26.13 feet; thence S 46°-29' W 295.10 feet; thence N 35°-37' W 156.75 feet; thence S 55°-20' W 1190.77 feet; thence S 37°-09'-30" W 4.30 feet; thence S 1°-24'-30" W 480.25 feet; thence S 55°-41' W 678.94 feet; thence N 34°-35' W 543.36 feet; thence N 16°-42' E 703.26 feet; thence N 16°-44' E 500.48 feet; thence N 16°-40'-30" E 247.44 feet; thence S 73°-16'-30" E 322.52 feet; thence S 16°-43'-30" W 14.11 feet; thence S 49°-34' E 210.33 feet; thence N 38°-10' E 974.08 feet; thence N 38°-26'-30" E 885.77 feet to the Place of Beginning, containing 77 lots numbered 1 through 77 inclusive.

ACKNOWLEDGMENT

STATE OF MICHIGAN )  
 ) ss.  
County of Washtenaw )

On this 23rd day of July, A.D. 1963 before me, a Notary Public in and for said County, personally came the above named Howard L. Ledbetter, Assessor of the City of Ann Arbor, known to me to be the person who executed the above dedication, and acknowledged the same to be his free act and deed as such. 98888888

Esther I. Michelfelder  
Esther I. Michelfelder  
Notary Public, Washtenaw County, Michigan

My Commission expires June 28, 1964.

APPROVAL BY COUNTY PLAT BOARD

This plat was approved on the 2nd day of August, 1963, by the Washtenaw County Plat Board.

Patricia Newkirk Hardy County Register of Deeds  
John H. Flook County Drain Commissioner  
J. Martin Remp Auditor  
Herbert G. Loeffler Auditor

John P. Cook Auditor

CERTIFICATE OF APPROVAL BY THE CITY PLANNING COMMISSION

This plat was approved by the Planning Commission of the City of Ann Arbor, Michigan at a meeting held on the 7th day of July, 1963.

Richard A. Ware  
Richard A. Ware, Chairman

Robert V. Galbreath  
Robert V. Galbreath, Secretary

DEDICATION

KNOW ALL MEN BY THESE PRESENTS, that I, Howard L. Ledbetter, Assessor of the City of Ann Arbor of Washtenaw County, State of Michigan, by virtue of authority in me vested by Section 51, Act 172, of 1929, having been duly authorized by the City Council have caused the land described in the annexed plat to be surveyed, laid out and platted, to be known as ASSESSOR'S PLAT NO. 48 of part of the NE 1/4, part of the NW 1/4, and part of the SW 1/4 of Section 21, T2S, R6E, City of Ann Arbor, Washtenaw County, Michigan, a replat of Lots 1 through 21, Block 6 of Brown & Fuller's Addition and that the Roads, Streets, Way and Drives as shown on said plat are now being used for such purposes, and that the plat conforms with the requirements of Section 51, Act 172 of Public Acts of 1929, as amended.

Witnesses:  
Wayne C. Johnson Witness  
John A. Rasmussen Witness  
Howard L. Ledbetter  
Howard L. Ledbetter,  
Assessor of the City of  
Ann Arbor

MUNICIPAL APPROVAL

This plat was approved by the common council of the City of Ann Arbor at a meeting held July 15, 1963 and is in compliance with Section 19a, Act 172, Public Acts of 1929, as amended.

Fred J. Looker  
Fred J. Looker, Clerk

SURVEYOR'S CERTIFICATE

I hereby certify that the plat hereon delineated is a correct one and that permanent metal monuments consisting of bars not less than one-half inch in diameter and 36 inches in length, or shorter bars of not less than one-half inch in diameter lapped over each other at least 6 inches with an over-all length of not less than 36 inches in depth have been placed at points marked thus (⊙) as thereon shown at all angles in the boundaries of the land platted, at all the intersections of streets, intersections of alleys, or of streets and alleys, and at the intersections of streets and alleys with the boundaries of the plat as shown on said plat.

Richard E. Bidstrup  
Richard E. Bidstrup  
Registered Land Surveyor No. 11360

COPY

Register's Office  
Washtenaw County, S.S.  
Assessor's Plat No. 48  
Recorded this 19th day of August, A.D. 1963 at 2:57 o'clock  
P.M. in Liber 16 of Plats  
at 2:55 o'clock  
Patricia Newkirk Hardy  
Register of Deeds

August 16, 1963  
August 26, 1963  
August 16, 1963  
Richard E. Lomas  
Richard E. Lomas, Plat Examiner