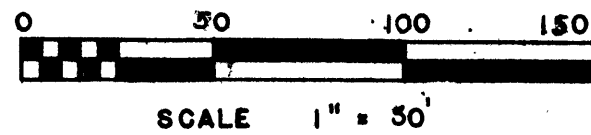


# NIMKE SUBDIVISION

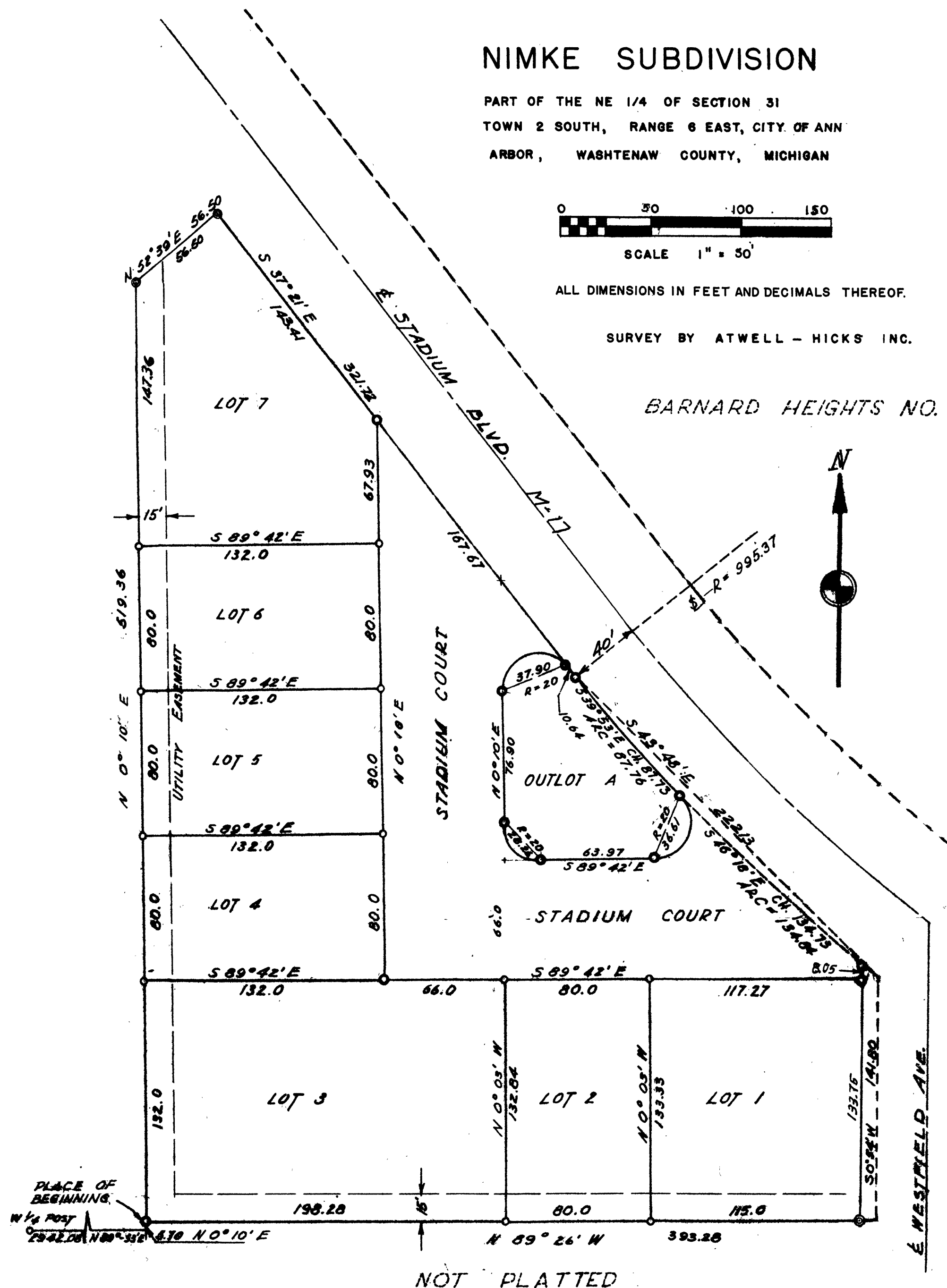
PART OF THE NE 1/4 OF SECTION 31  
TOWN 2 SOUTH, RANGE 6 EAST, CITY OF ANN  
ARBOR, WASHTENAW COUNTY, MICHIGAN



ALL DIMENSIONS IN FEET AND DECIMALS THEREOF.

SURVEY BY ATWELL - HICKS INC.

BARNARD HEIGHTS NO. 2



### DEDICATION

KNOW ALL MEN BY THESE PRESENTS, that we, **Frederick W. Nimke, a married man, and Carol B. Nimke, his wife, Dan D. Nanry, a married man, and Gertrude M. Nanry, his wife,** as proprietors, have caused the land embraced in the annexed plat to be surveyed, laid out and platted, to be known as **NIMKE SUBDIVISION, Part of the N. E. 1/4, of Section 31, Town 2 South, Range 6 East, City of Ann Arbor, Washtenaw County, Michigan**

and that the Boulevard, Avenue and Court as shown on said plat are hereby dedicated to the use of the public.

Signed and Sealed in the Presence of  
*Herbert S. Hicks* (Witness) **Frederick W. Nimke** (L.S.)  
**Dan D. Nanry**

*Bruce D. Green* (Witness) **Carol B. Nimke** (L.S.)  
**Gertrude M. Nanry** (L.S.)

### DESCRIPTION OF LAND PLATTED

The land embraced in the annexed plat of **NIMKE SUBDIVISION, Part of the N. E. 1/4 of Section 31, Town 2 South, Range 6 East, City of Ann Arbor, Washtenaw County, Michigan**

is described as follows:

Commencing at the West 1/4 post of Section 31, Town 2 South, Range 6 East, Ann Arbor Township, Washtenaw County, Michigan, thence N. 89° 53' E., 2942.08 feet; thence N. 0° 10' E., 5.70 feet for a PLACE OF BEGINNING; thence N. 0° 10' E., 519.36 feet; thence N. 52° 39' E., 56.50 feet; thence S. 37° 21' E., 321.72 feet; thence along the Southwesterly line of Stadium Boulevard in the arc of a circular curve concave to the Northeast with radius of 995.37 feet, the chord of which bears S. 43° 48' E., 222.13 feet; thence S. 0° 54' W., 141.80 feet; thence N. 89° 26' W., 393.28 feet to the place of beginning, being part of the Northeast 1/4 of Section 31, Town 2 South, Range 6 East, City of Ann Arbor, Washtenaw County, Michigan.

### APPROVAL BY COUNTY PLAT BOARD

This plat was approved on the 14th day of August, 1953, by the Washtenaw County Plat Board

*Thomas A. FitzGerald* (County Register of Deeds)  
*J. Martin Rempp* Auditor  
*Adolph F. Gross* Auditor  
*Herbert G. Loeffler* Auditor

### APPROVAL BY CITY PLANNING COMMISSION

This plat was approved on the 14th day of July, 1953.

*John E. Swisher Jr.* (Chairman)  
*Sybil K. Bennett* (Secretary)

I hereby certify that this copy is a true copy of the map or plat forwarded to the Register of Deeds for recording.  
Date October 21, 1953  
Filed in Washtenaw County, Michigan  
Date October 26, 1953  
Examined and Approved  
Date October 21, 1953  
*W. J. Mackery* PLAT ENGINEER

Register's Office  
Washtenaw County, } ss.  
Plat of Nimke Subdivision  
City of Ann Arbor  
was Recorded this 23rd day of October A.D., 1953, at 2:16 o'clock A. M. in Liber 11 of Plat  
on Page 69

*Thomas A. FitzGerald* Register of Deeds  
By *P. Handley* Deputy

### ACKNOWLEDGMENT

STATE OF MICHIGAN } ss.  
County of Washtenaw }  
On this 7th day of July, 1953, before a Notary Public in and for said County, personally came the above named Frederick W. Nimke and Carol B. Nimke and Dan D. Nanry and Gertrude M. Nanry known to me to be the persons who executed the above dedication, and acknowledge the same to be their free act and deed.

*Lucille E. Lauer*  
Notary Public, Washtenaw  
My Commission expires 1-13-57

### SURVEYOR'S CERTIFICATE

I hereby certify that the plat hereon delineated is a correct one and that permanent metal monuments consisting of bars not less than one-half inch in diameter and 48 inches in length, or shorter bars of not less than one-half inch in diameter lapped over each other at least 6 inches with an over-all length of not less than 48 inches, encased in a concrete cylinder of at least 4 inches in diameter and 48 inches in depth have been placed at points marked thus (..@..) as thereon shown at all angles in the boundaries of the land platted, at all the intersections of streets, intersections of alleys, or of streets and alleys, and at the intersections of streets and alleys with the boundaries of the plat as shown on said plat.

*Herbert S. Hicks*  
Registered Land Surveyor or Registered Professional Engineer  
Herbert S. Hicks No. 1715

### MUNICIPAL APPROVAL

This plat was approved by the Common Council of the City of Ann Arbor at a meeting held on the 7th day of August, 1953  
*Fred J. Looker* (Clerk)

### APPROVAL BY BOARD OF PUBLIC WORKS

This plat was approved by the Board of Public Works of the City of Ann Arbor at a meeting held on the 22nd day of July, 1953  
*Fred J. Looker* (Clerk)

### CERTIFICATE AS TO STATE TRUNK LINE OR FEDERAL AID ROADS

We hereby certify that said plat appears to include land located on a state trunk line or federal aid road.

*Charles M. Ziegler* STATE HIGHWAY COMMISSIONER

### COUNTY TREASURER'S CERTIFICATE

Office of County Treasurer, Washtenaw County.  
I hereby certify, that there are no tax liens or titles held by the State on the lands described hereon, and that there are no tax liens or titles held by individuals on said lands, for the five years preceding the 14th day of August, 1953, and that the taxes for said period of five years are all paid, as shown by the records of this office

This certificate does not apply to taxes, if any, now in process of collection by township, city or village collecting officers.  
*W. F. Verner* (County Treasurer)

APPROVED  
*Charles M. Ziegler*  
CHARLES M. ZIEGLER  
STATE HIGHWAY COMMISSIONER