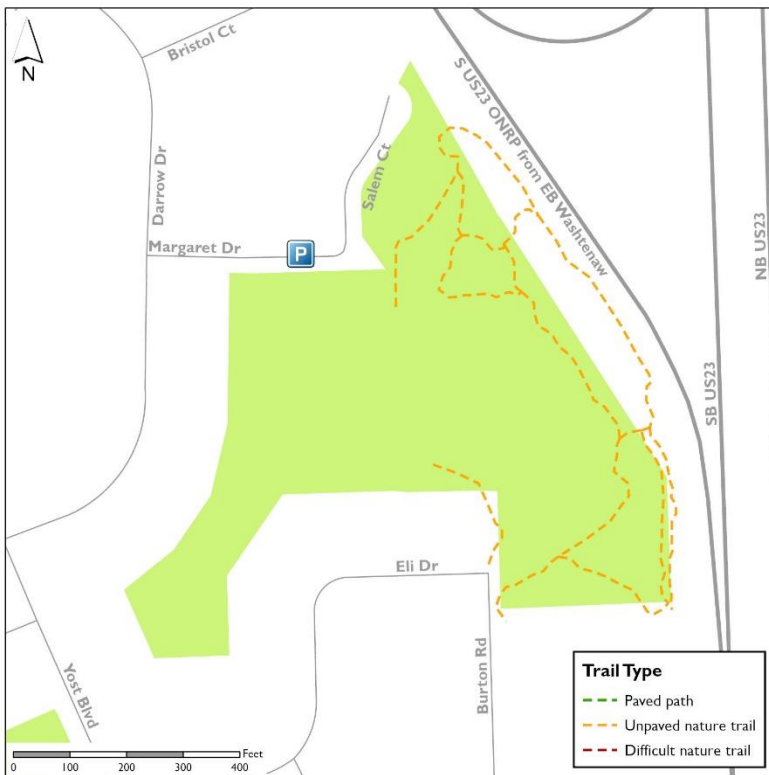




Sylvan Park

This park walk, located near one of the busiest areas of Southeast Ann Arbor, offers a mix of structured play spaces and nature exploration in the northern parcel of the park. Swift Run creek divides the Eastern portion hosting a 5-acre oak hickory forest with a foot path and the Western portion providing a playground and tennis court. There is also a picnic hill! A short ½ mile loop will expose you to the whole park, but please spend time doing more than just walking. There is a tennis court and playground and green space perfect for a picnic. This park highlights the necessity of green spaces for the human spirit in a busy urban area.



Total trail length: .9 of a mile

Topography: Flat

Trail type: Dirt footpaths



Visit the [park webpage](#) for additional park details and parking details. Check out [GIVE365](#) for [Visit Every Park](#) information or to track your walks and earn prizes.

Please remember nature areas are not cleared or salted so walk at your own risk. Consider walking with sticks/poles for stability.

Tag us #a2parkwalks on social media.



@a2parks
@annarborparks