

NORTH CAMPUS HEIGHTS

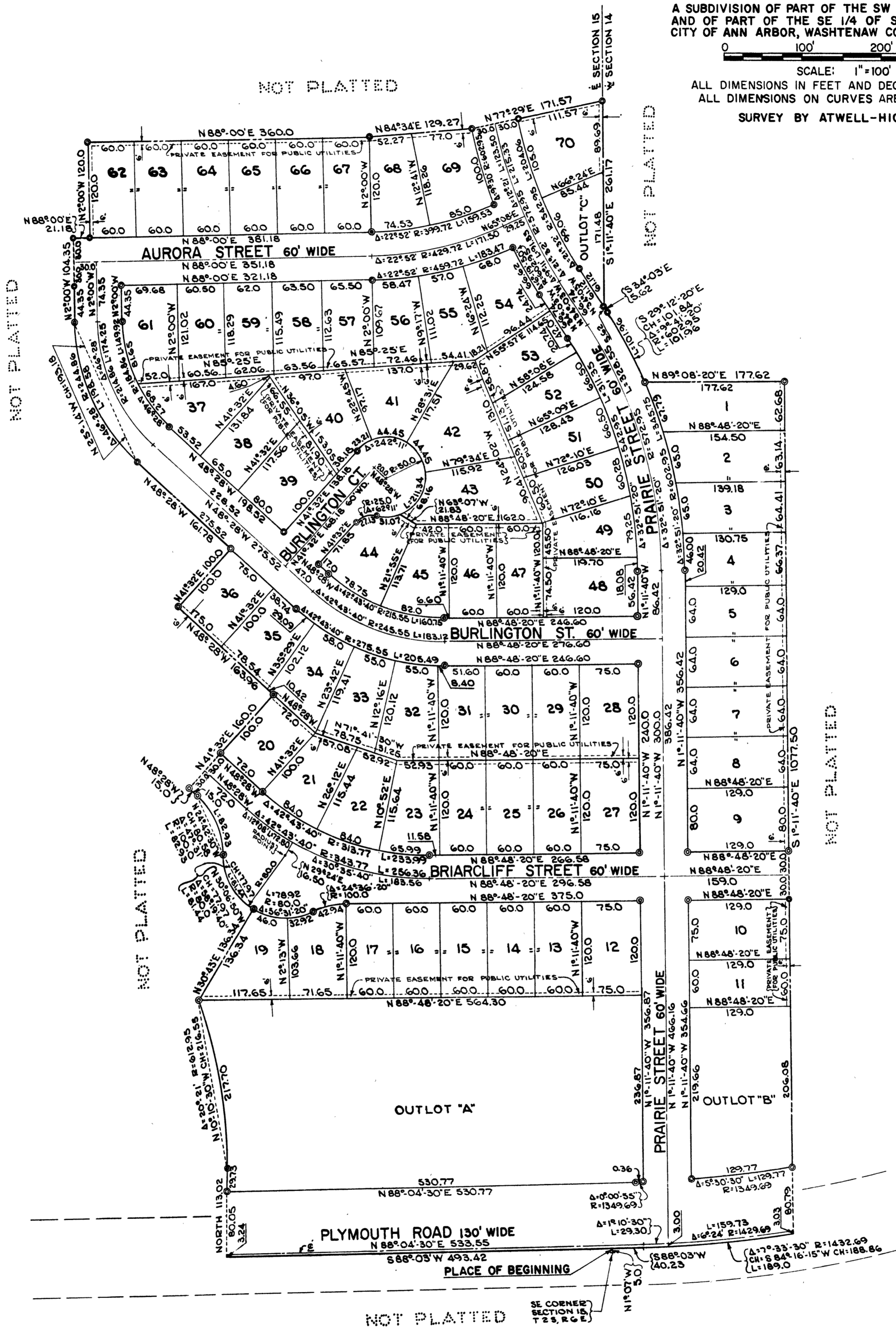
A SUBDIVISION OF PART OF THE SW 1/4 OF SECTION 14,
AND OF PART OF THE SE 1/4 OF SECTION 15, T2S, R6E,
CITY OF ANN ARBOR, WASHTENAW COUNTY, MICHIGAN



SCALE: 1"=100'

ALL DIMENSIONS IN FEET AND DECIMALS THEREOF
ALL DIMENSIONS ON CURVES ARE ARC LENGTHS

SURVEY BY ATWELL-HICKS, INC.



NORTH CAMPUS HEIGHTS

A SUBDIVISION OF PART OF THE SW 1/4 OF SECTION 14,
AND OF PART OF THE SE 1/4 OF SECTION 15, T2S, R6E,
CITY OF ANN ARBOR, WASHTENAW COUNTY, MICHIGAN



SCALE: 1"=100'
ALL DIMENSIONS IN FEET AND DECIMALS THEREOF
ALL DIMENSIONS ON CURVES ARE ARC LENGTHS
SURVEY BY ATWELL-HICKS, INC.

DEDICATION

KNOW ALL MEN BY THESE PRESENTS, that we, Arbor Heights Building Corporation, a Michigan Corporation, by S. Brooks Barron, Treasurer, and Thomas A. Gallagher, President, and the Public Schools of the City of Ann Arbor, a Municipal Corporation by John H. Hollowell, President, and George Balas, Secretary, as proprietors, have caused the land embraced in the annexed plat to be surveyed, laid out and platted to be known as NORTH CAMPUS HEIGHTS, a subdivision of part of the SW 1/4 of Section 14, and of part of the SE 1/4 of Section 15, T2S, R6E, City of Ann Arbor, Washtenaw County, Michigan, and that the streets, road, and court as shown on said plat are hereby dedicated to the use of the public.

Signed and sealed in the presence of:
Elvie R. Adcox THE ARBOR HEIGHTS BUILDING CORPORATION
S. Brooks Barron S. Brooks Barron, Treasurer
Janet E. Windmill THE PUBLIC SCHOOLS OF THE CITY OF ANN ARBOR
John H. Hollowell John H. Hollowell, President
Josephine Lutchka George Balas, Secretary

CERTIFICATE OF MUNICIPAL APPROVAL

This plat was approved by the Common Council of the City of Ann Arbor at a meeting held June 13, 1960 and that the width of lots is in compliance with requirements of Section 30, Act 172, of 1928, as amended.
Fred J. Locker
Fred J. Locker, Clerk

CERTIFICATE OF APPROVAL BY THE CITY PLANNING COMMISSION

This plat was approved by the Planning Commission of the City of Ann Arbor, Michigan at a meeting held on the 24th day of MAY, 1960.
Dean W. Coston
Dean W. Coston, Chairman
John D. Paul
John D. Paul, Secretary

COUNTY TREASURER'S CERTIFICATE Office of County Treasurer, Washtenaw County

I hereby certify, that there are no tax liens or titles held by the State on the lands described hereon, and that there are no tax liens or titles held by individuals on said lands for the five years preceding the 28th day of June, 1960, and that the taxes for said period of five years are all paid, as shown by the records of this office.
This certificate does not apply to taxes, if any, now in process of collection by township, city or village collecting officers.
W.F. Verner
W.F. Verner (County Treasurer)

DESCRIPTION OF LAND PLATTED

The land embraced in the annexed plat of NORTH CAMPUS HEIGHTS, a subdivision of part of the SW 1/4 of Section 14, and of part of the SE 1/4 of Section 15, T2S, R6E, City of Ann Arbor, Washtenaw County, Michigan is described as follows:

Commencing at the SE corner of Section 15, T2S, R6E, Ann Arbor Township, Washtenaw County, Michigan; thence N 1°-07' W 5.00 feet for a PLACE OF BEGINNING; thence S 88°-03' W 493.42 feet; thence North 113.02 feet; thence 217.70 feet in the arc of a circular curve concave to the southwest, radius 612.95 feet, chord N 10°-10'-30" W 216.55 feet; thence N 30°-43' E 136.34 feet; thence 81.44 feet in the arc of a circular curve concave to the northeast, radius 80.00 feet, chord N 30°-06'-50" W 77.97 feet; thence 82.93 feet in the arc of a circular curve concave to the southwest, radius 100.00 feet, chord N 24°-42'-30" W 80.58 feet; thence N 48°-28' W 15.00 feet; thence N 41°-32' E 160.00 feet; thence N 48°-28' W 163.96 feet; thence N 41°-32' E 100.00 feet; thence N 48°-28' W 161.78 feet; thence 198.58 feet in the arc of a circular curve concave to the northeast, radius 244.86 feet, chord N 25°-14' W 193.18 feet; thence N 2°-00' W 104.35 feet; thence N 88°-00' E 21.18 feet; thence N 2°-00' W 120.00 feet; thence N 88°-00' E 360.00 feet; thence N 84°-34' E 129.27 feet; thence N 77°-29' E 171.57 feet; thence S 1°-11'-40" E 261.17 feet; thence S 34°-03' E 5.62 feet; thence 101.96 feet in the arc of a circular curve concave to the southwest, radius 602.95 feet, chord S 29°-12'-20" E 101.84 feet; thence N 89°-08'-20" E 177.62 feet; thence S 1°-11'-40" E 1077.50 feet; thence 189.00 feet in the arc of a circular curve concave to the northwest, radius 1432.69 feet, chord S 84°-16'-15" W 188.86 feet; thence S 88°-03' W 40.23 feet to the Place of Beginning, containing 70 lots numbered 1 through 70 inclusive and three outlots lettered A through C inclusive.

CERTIFICATE AS TO STATE TRUNK LINE OR FEDERAL AID ROADS

We hereby certify that said plat appears to include land located on a state trunk line or federal aid road.
Patricia Newkirk Hardy John H. Flook
Patricia Newkirk Hardy John H. Flook
County Register of Deeds County Drain Commissioner
J. Martin Rempp Herbert G. Loeffler
J. Martin Rempp Herbert G. Loeffler
Auditor Auditor
John P. Cook
John P. Cook
Auditor

ACKNOWLEDGMENT

STATE OF MICHIGAN)
County of WAYNE) ss.
On this 24th day of MAY, A.D., 1960, before me, a Notary Public, in and for said County appeared S. Brooks Barron and Thomas A. Gallagher to me personally known, who being by me duly sworn did say they are the Treasurer and President respectively of the Arbor Heights Building Corporation and that said instrument was signed in behalf of said corporation by authority of its Board of Directors and the said S. Brooks Barron and Thomas A. Gallagher acknowledged said instrument to be the free act and deed of said corporation.
Elvie R. Adcox
Elvie R. Adcox
Notary Public, WAYNE County, Michigan
My Commission expires AUGUST 6, 1961.

ACKNOWLEDGMENT

STATE OF MICHIGAN)
County of Washtenaw) ss.
On this 11th day of May, A.D., 1960, before me, a Notary Public in and for said County appeared John H. Hollowell and George Balas to me personally known, who say they are the President and Secretary respectively of the Public Schools of the City of Ann Arbor, a Municipal Corporation, and that said instrument was signed in behalf of said corporation by authority of its Board of Directors and the said John H. Hollowell and George Balas acknowledged said instrument to be the free act and deed of said corporation.
Thad Carr
Thad Carr
Notary Public, Washtenaw County, Michigan
My Commission expires Oct. 8, 1963.

SURVEYOR'S CERTIFICATE

I hereby certify that the plat hereon delineated is a correct one and that permanent metal monuments consisting of bars of not less than one-half inch in diameter and 36 inches in length, or shorter bars of not less than one-half inch in diameter lapped over each other at least 6 inches with an over-all length of not less than 36 inches, encased in a concrete cylinder at least 4 inches in diameter and 36 inches in depth have been placed at points marked (C) as thereon shown at all angles in the boundaries of the land platted, at all the intersections of streets, intersections of alleys, or of streets and alleys, and at the intersections of streets and alleys with the boundaries of the plat as shown on said plat.

Robert J. Jagow
Robert J. Jagow
Registered Land Surveyor # 6998
Date July 13, 1960
FILED IN PUBLIC GENERAL'S DEPT.
Date July 13, 1960
RECORDED AND APPROVED
John M. Smith
OTIS M. SMITH
AUDITOR GENERAL
D. L. MacElroy
D. L. MacElroy
Plat Engineer

APPROVAL BY COUNTY PLAT BOARD

This plat was approved on the 7th day of July, 1960, by the Washtenaw County Plat Board.
Patricia Newkirk Hardy John H. Flook
Patricia Newkirk Hardy John H. Flook
County Register of Deeds County Drain Commissioner
J. Martin Rempp Herbert G. Loeffler
J. Martin Rempp Herbert G. Loeffler
(Auditor) (Auditor)
John P. Cook
John P. Cook
(Auditor)

COPY
Register's Office
Washtenaw County,) ss.
Plat of North Campus Heights
was recorded this 14th day of July, A.D., 1960 at 2:30 o'clock
P.M. in Liber 15 of Plats
on Page 27 & 28
Patricia N. Hardy
Patricia N. Hardy
Register of Deeds

APPROVED 7-13-60
DATE
John C. Mackie
JOHN C. MACKIE
STATE HIGHWAY COMMISSIONER
BY HR