

NORTH CAMPUS HEIGHTS NO. 4

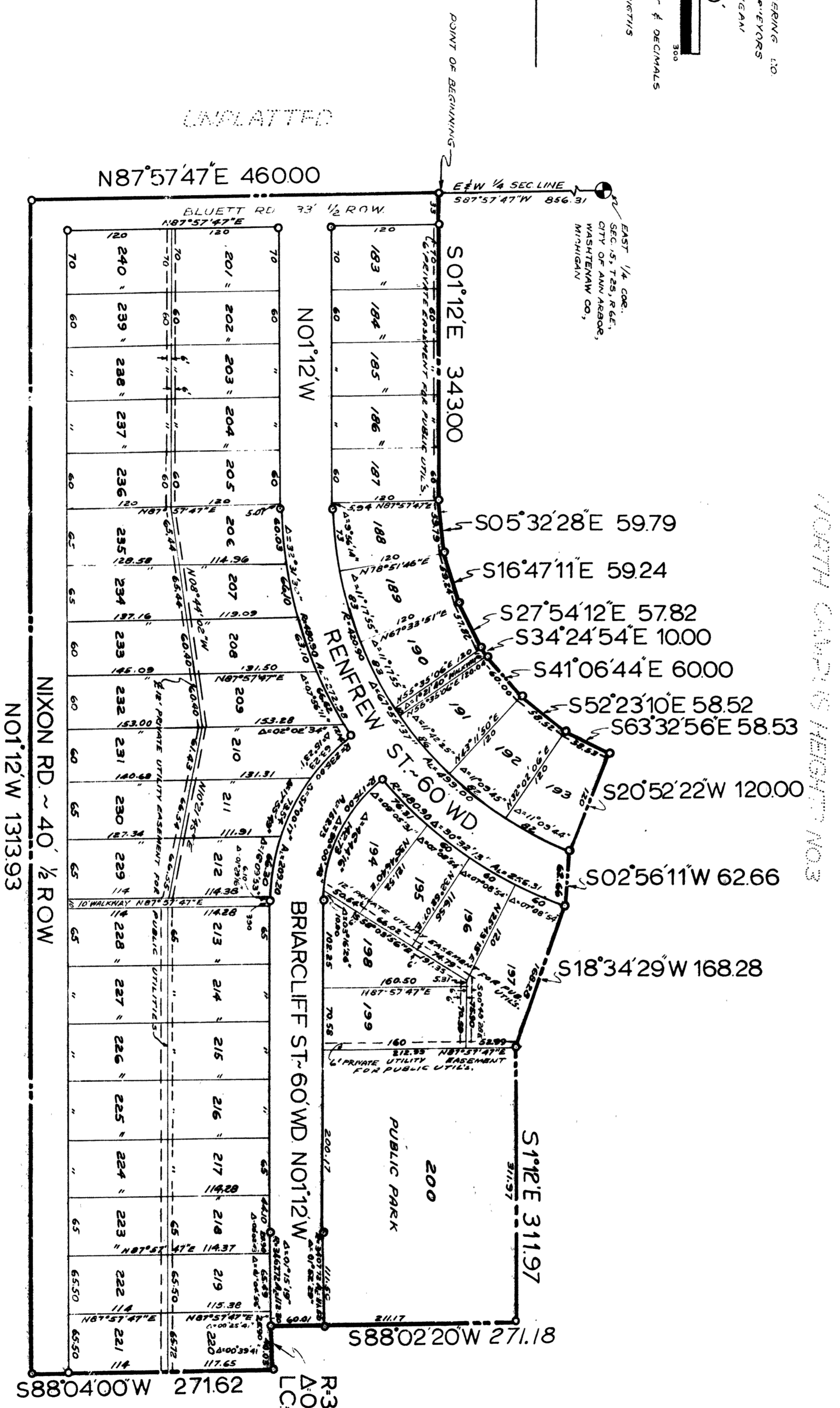
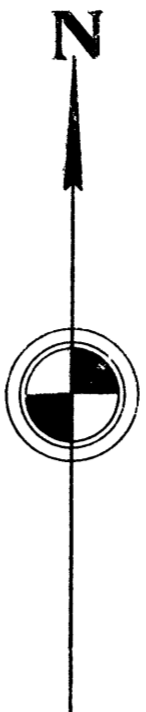
A SUBDIVISION OF PART OF THE S.E.1/4 SECTION 15,
T2S, R6E, CITY OF ANN ARBOR, WASHTEENAW COUNTY, MICHIGAN.

PREPARED BY - AMERICAN ENGINEERING, LTD.
CIVIL ENGINEERS & SURVEYORS
ANN ARBOR, MICHIGAN

SCALE = 1" = 100'



ALL DIMENSIONS ARE SHOWN IN FEET & DECIMALS
THEREOF.
ALL CURVE DIMENSIONS ARE ARC LENGTHS



R-346772 A-4003
A-003941 T-2001
LC-5032310E 4003

COPY

NORTH CAMPUS HEIGHTS NO. 4

A SUBDIVISION OF PART OF THE S.E. 1/4 SECTION 15,
T2S, R6E, CITY OF ANN ARBOR, WASHTENAW COUNTY, MICHIGAN.

3012002
NORTH CAMPUS HEIGHTS NO. 4
LIBER: 16
PAGE: 53
2 OF 2
07/19/1963

DEDICATION

KNOW ALL MEN BY THESE PRESENTS, that we, Arbor Heights Building Corporation, a Michigan Corporation, by S Brooks Barron, Treasurer, and Thomas A. Gallagher, President, as proprietors, have caused the land embraced in the annexed plat to be surveyed, laid out and platted to be known as NORTH CAMPUS HEIGHTS NO. 4, a Subdivision of part of the S.E. 1/4 Section 15, T2S, R6E, City of Ann Arbor, Washtenaw County, Michigan, and that the streets and roads as shown, on said plat are hereby dedicated to the use of the public and the easements indicated on said plat are not dedicated to the public but reserved for Public Utilities and any other use designated hereon and no permanent structures are to be located within said easement. The walkways and lot 200 designated as a Public Park are dedicated to the use of the Public.

Signed in the Presence of:

Elvie R. Adcox
ELVIE R. ADCOX Witness

Marie A. McCarter
MARIE A. McCARTER Witness

ARBOR HEIGHTS BUILDING CORPORATION

S. Brooks Barron
S. Brooks Barron, Treasurer

Thomas A. Gallagher
Thomas A. Gallagher, President,

SURVEYOR'S CERTIFICATE

I hereby certify that the plat hereon delineated is a correct one and that permanent metal monuments consisting of bars not less than one-half inch in diameter and 36 inches in length, or shorter bars of not less than one-half inch in diameter lapped over each other at least 6 inches with an over-all length of not less than 36 inches, encased in a concrete cylinder at least 4 inches in diameter and 36 inches in depth have been placed at points marked (o) as thereon shown at all angles in the boundaries of the land platted, at all intersections of streets, intersections of alleys, or of streets and alleys, and at the intersections of streets and alleys with the boundaries of the plat as shown on said plat.

Murray J. Knowlsey, Jr.
Murray J. Knowlsey, Jr.
Reg. Civil Engineer & Surveyor
#5342

CERTIFICATE OF APPROVAL BY THE CITY PLANNING COMMISSION

This plat was approved by the Planning Commission of the City of Ann Arbor, Michigan, at a meeting held on the 28th day of MAY, 1963.

Richard A. Ware
Richard A. Ware, Chairman

David S. Pollock
David S. Pollock, Vice Chairman

Joseph W. Edwards
Joseph W. Edwards, Secretary

ACKNOWLEDGMENT

STATE OF MICHIGAN }
County of Wayne } ss

On this 13th day of MAY A.D., 1963 before me, A Notary Public, in and for said County appeared S. Brooks Barron and Thomas A. Gallagher to me personally known, who being by me duly sworn did say they are the Treasurer and President respectively of the Arbor Heights Building Corporation and that said instrument was signed in behalf of said Corporation by authority of its Board of Directors and the said S. Brooks Barron and Thomas A. Gallagher acknowledged said instrument to be the free act and deed of said Corporation.

Elvie R. Adcox
ELVIE R. ADCOX
Notary Public, Wayne County, Michigan.
My Commission expires JULY 31 1965.

COUNTY TREASURER'S CERTIFICATE

Office of County Treasurer, Washtenaw County

I hereby certify, that there are no tax liens or titles held by the State on the lands described hereon, and that there are no tax liens or titles held by individuals on said lands for the five years preceding the 12 day of June 1963, and that the taxes for said period of five years are all paid, as shown by the records of this office.

This certificate does not apply to taxes, if any, now in process of collection by township, city or village collecting officers.

Sylvester A. Leonard
Sylvester A. Leonard
County Treasurer

CERTIFICATE OF MUNICIPAL APPROVAL

This plat was approved by the Common Council of the City of Ann Arbor at a Meeting held June 3 1963 and the width of lots is in compliance with requirements of Section 30, Act 172, of 1929, as amended, and in compliance with Section 19A, Public Act 150 of 1961.

Fred J. Looker
Fred J. Looker, Clerk

COPY

Register's Office }
Washtenaw County, } S.S.

Plat of North Campus Heights
No. 4

was Recorded this 19th day of
July A. D., 1963 at 11:30 o'clock
A. M., in Liber 16 of Plats
on Page 51 & 52.

Patricia Newkirk Hardy
Register of Deeds
ORIGINAL ON FILE

I hereby certify this copy is a true copy of map or plat forwarded the Register of deeds for recording.
Date July 18 1963
FILED IN AUDITOR GENERAL'S OFFICE
Date July 26 1963
EXAMINED AND APPROVED
Date July 18 1963
Billie S. Farley
BILLIE S. FARLEY
AUDITOR GENERAL
By Richard E. Lomas
Richard E. Lomas - Print.

DESCRIPTION OF LAND PLATTED

The land embraced in the annexed plat of NORTH CAMPUS HEIGHTS NO. 4 A Sub-division of part of the S.E. 1/4 Section 15, T2S, R6E, City of Ann Arbor, Washtenaw County, Michigan, is described as follows: Beginning at a point on the E&W 1/4 line of Section 15, T2S, R6E, Washtenaw County, Michigan, said point being located S87°57'47"W 856.31 ft. from the East 1/4 Section corner and running thence S01°12'E 343.00 ft; thence S05°32'28"E 59.79 ft; thence S16°47'11"E 59.24 ft; thence S27°54'12"E 57.82 ft; thence S34°24'54"E 10.00 ft; thence S41°06'44"E 60.00 ft; thence S52°23'10"E 58.52 ft; thence S63°32'56"E 58.53 ft; thence S20°52'22"W 120.00 ft; thence S02°56'11"W 62.66 ft; thence S18°34'29"W 168.28 ft; thence S01°12'E 311.97 ft; thence S88°02'20"W 271.18 ft; thence 40.03 ft. along the arc of a 3467.72 ft. radius circular curve concave Easterly through a central angle of 00°39'41" with a chord bearing S03°23'10"E and 40.03 ft. in length; thence S88°04'00"W 271.62 ft; thence N01°12'W 1313.93 ft. along the centerline of Nixon Road; thence N87°57'47"E along the E&W 1/4 line of Section 15 460.00 ft. to the point of beginning. Containing 58 lots numbered 183 through 240 inclusive, lot 200 being dedicated as a public park.

APPROVAL BY COUNTY PLAT BOARD

This plat was approved on the 28th day of June 1963 by the Washtenaw County Plat Board

Patricia Newkirk Hardy
Patricia Newkirk Hardy
(County Register of Deeds)
John H. Flook
John H. Flook
(County Drain Commissioner)
J. Martin Rempp
J. Martin Rempp
(Auditor)
John P. Cook
John P. Cook
(Auditor)
Herbert G. Loeffler
Herbert G. Loeffler
(Auditor)