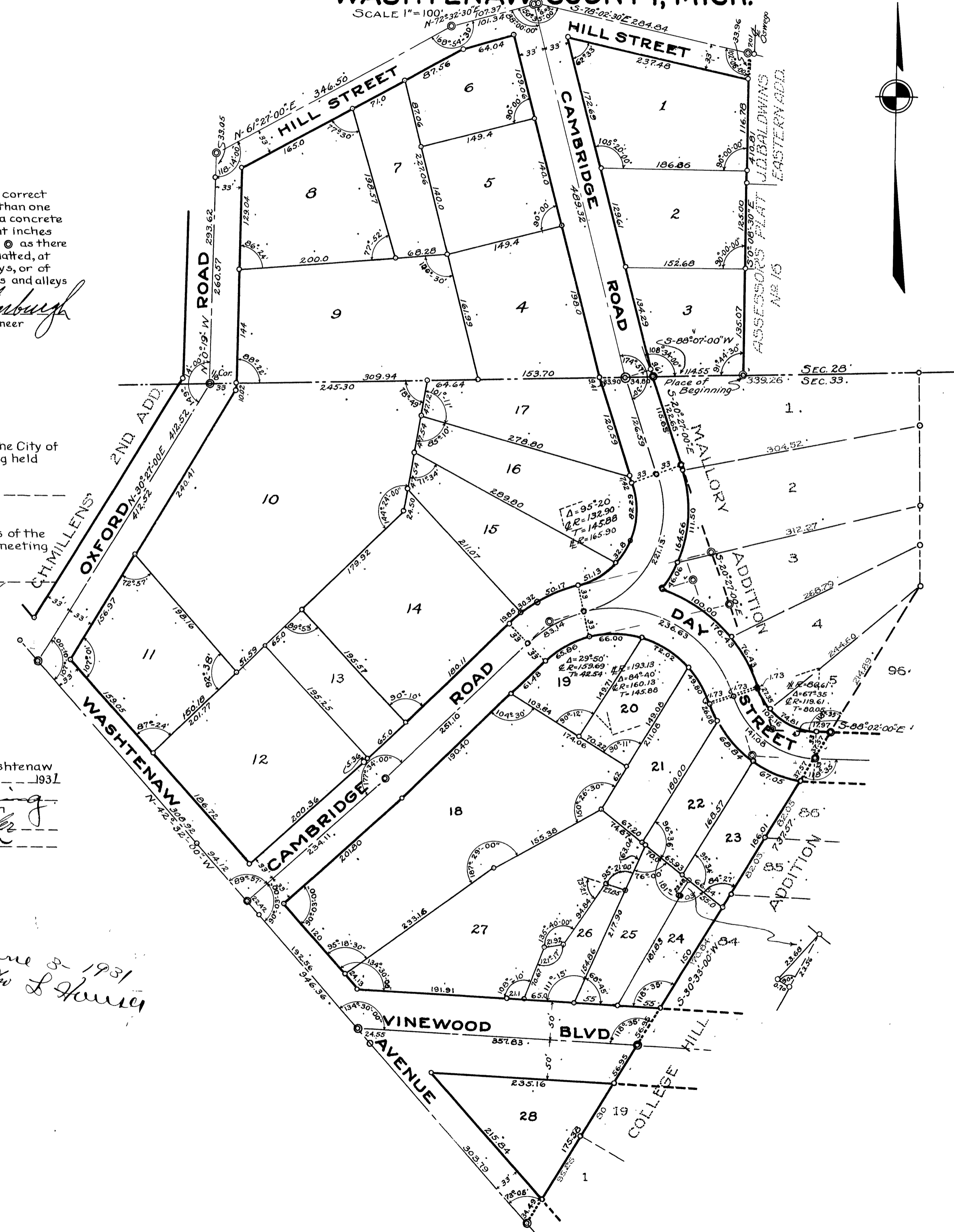


ASSESSOR'S PLAT No 15
IN THE
CITY OF ANN ARBOR,
WASHTENAW COUNTY, MICH.

June 1-1931
Geo D Haney

1681710/90
1 of 1
15
BUREAU OF RECORDS
ANN ARBOR, MICHIGAN

SCALE 1" = 100'



SURVEYOR'S CERTIFICATE

I hereby certify that the plat hereon delineated is a correct one and that permanent metal monuments of not less than one inch in diameter and fifteen inches in length set in a concrete base at least four inches in diameter and forty eight inches in depth have been placed at all points marked thus: \odot as there on shown at all angles in the boundaries of the land platted, at all the intersections of streets, intersections of alleys, or of streets and alleys, and at the intersections of streets and alleys with the boundaries of the plat as shown on said plat.

George H. Vandenberg
Registered Civil Engineer

CERTIFICATE OF MUNICIPAL APPROVAL

This plat was approved by the Common Council of the City of Ann Arbor, Washtenaw County, Michigan at a meeting held

May 11 1931
Lucia Perry
Clerk

This plat was approved by the Board of Public Works of the City of Ann Arbor, Washtenaw County, Michigan at a meeting held

April 27 1931
Lucia Perry
Clerk

CERTIFICATE OF APPROVAL BY BOARD OF COUNTY AUDITORS

Approved by the Board of County Auditors of Washtenaw County, Michigan this

May 5 1931
William M. Fowler
Chairman
Edwin L. Brown

DEDICATION

KNOW ALL MEN BY THESE PRESENTS: That I Herbert W. Crippen, Assessor of the City of Ann Arbor, Washtenaw County, Michigan by virtue of authority in me vested by Section 51, Act 172 P.A. of 1929 having been duly authorized by the Common Council of the City of Ann Arbor, Washtenaw County, Michigan have caused the land described in the annexed plat to be surveyed, laid out and platted to be known as "Assessor's Plat No. 15" of the City of Ann Arbor, Washtenaw County, Michigan, being a part of the North East Quarter of Sec. 33 and of the South East Quarter of Sec. 28, T. 2. S., R. 6. E. Washtenaw County, Michigan, and that the street and alleys as shown on said plat are hereby dedicated to the use of the public.

Herbert W. Crippen
Assessor of the City of Ann Arbor,
Washtenaw Co., Michigan.

Witnesses

Harold R. Seville
Geo. W. Blackburn

ACKNOWLEDGEMENT

STATE OF MICHIGAN } ss
COUNTY OF WASHTENAW }

On this *FULL 7th* day of *MAY* A.D. 1931 before me, a Notary Public, in and for said county, personally came the above named Herbert W. Crippen, Assessor of the City of Ann Arbor, Washtenaw County, Michigan, known to me to be the person who executed the above dedication and acknowledged the same to be his free act and deed as such Assessor

Ernest M. Wurster
Notary Public in and for Washtenaw Co., Michigan
My Commission expires *Sept. 25, 1931*

DESCRIPTION

Commencing at the South East Corner of Section 28, T. 2. S., R. 6. E.; thence West on Section Line between 28 and 33, 641.97 feet to Place of Beginning; thence S-88°-07'-00"W along said Section Line 114.55 feet to a point on the East Line of Cambridge Road; thence S-20°-27'-00"E along the East Line of Cambridge Road 115.65 feet to a point of Curvature; thence thru the Arc of a Cir. curve to the Right of Radius 165.90 feet and Central Angle of 95°-20' a distance of 164.56 feet; thence thru 176.43 feet of Arc of a Circular Curve to the left with Radius 193.13 feet and Central Angle of 84°-40'; thence continuing on the tangent to said Curve 1.73 feet to a point of Curvature; thence thru the Arc of a Circular Curve to the left of Radius 86.61 feet and Central Angle of 67°-35' a distance of 102.16 feet; thence continuing on the tangent to said curve 17.97 feet to an iron pipe marking the intersection of the North line of Cambridge Road with the South line of MALLORY ADDITION and the West line of COLLEGE HILL ADDITION; thence S-30°-33'-00"W along the West line of COLLEGE HILL ADDITION 737.57 feet to the Center line of Washtenaw Avenue; thence N-42°-32'-00"W along the Center line of Washtenaw Avenue 946.36 feet; thence N-30°-27'-00"E along the Center line of Oxford Road 412.52 feet; thence N-0°-19'-00"W along the Center line of Oxford Road 293.62 feet; thence N-61°-27'-00"E along the Center line of Hill Street 346.50 feet; thence N-72°-32'-30"E along the Center line of Hill Street 107.37 feet; thence S-78°-02'-30"E along the Center line of Hill Street 284.84 feet; thence S-0°-08'-30"E 410.81 feet to the Place of Beginning.

Washtenaw
Assessor's Plat No 15
June 31 1931
John S. Cummings

June 3 1931
Geo D Haney

June 1 1931
Geo D Haney

Check 12/17/31 - 1719/31
12/18/31