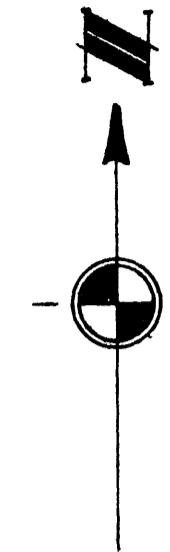


# BARFORD HOMES SUBDIVISION

A PART OF THE NE 1/4 OF SECTION 10, T35, R6E,  
CITY OF ANN ARBOR, WASHTENAW COUNTY, MICHIGAN



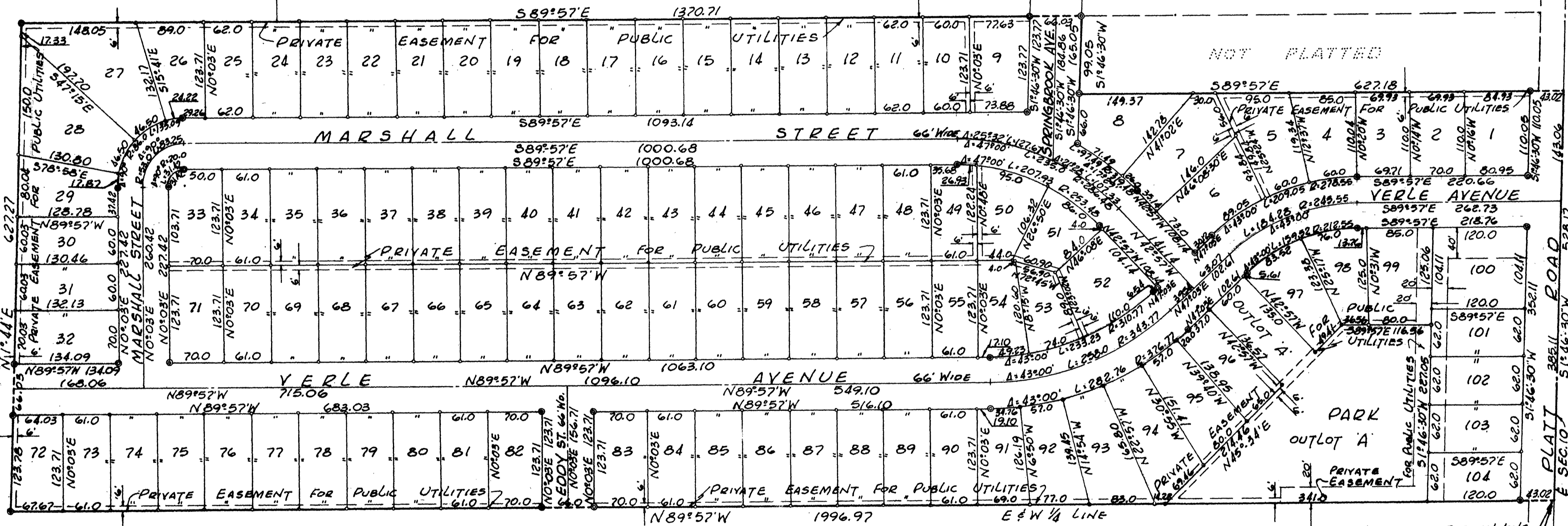
ALL DIMENSIONS ON CURVES ARE ARC LENGTHS  
ALL DIMENSIONS IN FEET AND DECIMALS THEREOF.  
SURVEY BY ATWELL-HICKS, INC.



NOT PLATTED

SPRINGWATER SUBDIVISION NO. 2

SPRINGWATER SUBDIVISION NO. 1



NOT PLATTED

PLACE OF BEGINNING  
E 1/4 COR. SEC. 10  
T35, R6E

SPRINGWATER SUBDIVISION NO. 1

NOT PLATTED

**BARFORD HOMES SUBDIVISION**

A PART OF THE NE 1/4 OF SECTION 10, T3S, R6E,  
CITY OF ANN ARBOR, WASHTENAW COUNTY, MICHIGAN



ALL DIMENSIONS ON CURVES ARE ARC LENGTHS  
ALL DIMENSIONS IN FEET AND DECIMALS THEREOF  
SURVEY BY ATWELL-HICKS, INC.

DEDICATION

KNOW ALL MEN BY THESE PRESENTS, that Tujac Investments Inc., a Michigan Corporation by Leo P. Meyers, Treasurer, and Richard P. Whitker, Secretary and the Senrab Construction Corporation, a Michigan Corporation by Sidney C. Barnes, President and Jean Maisano, Treasurer, as proprietors have caused the land embraced in the annexed plat to be surveyed, laid out and platted to be known as BARFORD HOMES SUBDIVISION, a part of the NE 1/4 of Section 10, T3S, R6E, City of Ann Arbor, Washtenaw County, Michigan and that the Street, Avenues, Road and Park as shown on said plat are hereby dedicated to the use of the public.

Signed in the Presence of:  
Walter R. Derr, Witness  
Betty L. Derr, Witness  
SENBRAB CONSTRUCTION COMPANY By:  
Sidney C. Barnes, President  
Jean Maisano, Treasurer

Signed in the Presence of:  
Nina L. Fahrner, Witness  
Helen Adcock, Witness  
TUJAC INVESTMENTS INC. By:  
Leo P. Meyers, Treasurer  
Richard P. Whitker, Secretary

ACKNOWLEDGMENT

STATE OF MICHIGAN )  
County of Washtenaw ) ss.

On this 23<sup>rd</sup> day of November, A.D. 1959, before me, a Notary Public in and for said County, appeared Leo P. Meyers and Richard P. Whitker, to me personally known, who being each by me duly sworn did say that they are the Treasurer and Secretary respectively of Tujac Investments Inc., a Michigan Corporation, and that said instrument was signed in behalf of said Corporation by authority of its Board of Directors and the said Leo P. Meyers and Richard P. Whitker acknowledged said instrument to be the free act and deed of said Corporation.

Helen Adcock  
HELEN ADCOCK, Notary Public, Washtenaw County, Michigan

My Commission expires July 6, 1962

CERTIFICATE OF APPROVAL BY THE CITY PLANNING COMMISSION

This plat was approved by the Planning Commission of the City of Ann Arbor, Michigan at a meeting held on the 11<sup>th</sup> day of AUGUST, 1959.

Dean W. Coston  
DEAN W. COSTON, Chairman  
John D. Paul  
JOHN D. PAUL, Secretary

ACKNOWLEDGMENT

STATE OF MICHIGAN )  
County of Washtenaw ) ss.

On this 1<sup>st</sup> day of July, A.D. 1959, before me, a Notary Public in and for said County, appeared Sidney C. Barnes and Jean Maisano, to me personally known, who being each by me duly sworn did say that they are the President and Treasurer respectively of the Senrab Construction Corporation, a Michigan Corporation and that said instrument was signed in behalf of said Corporation by authority of its Board of Directors and the said Sidney C. Barnes and Jean Maisano acknowledged said instrument to be the free act and deed of said Corporation.

Walter R. Derr  
WALTER R. DERR, Notary Public, Washtenaw County, Michigan  
My Commission expires July 15, 1961

COUNTY TREASURER'S CERTIFICATE  
Office of County Treasurer, Washtenaw County

I hereby certify, that there are no tax liens or titles held by the State on the lands described hereon, and that there are no tax liens or titles held by individuals on said lands for the five years preceding the 23<sup>rd</sup> day of November, 1959 and that the taxes for said period of five years are all paid, as shown by the records of this office. This certificate does not apply to taxes, if any, now in process of collection by township, city or village collecting officers.

W. F. Verner  
W. F. Verner, County Treasurer

CERTIFICATE OF MUNICIPAL APPROVAL

This plat was approved by the Common Council of the City of Ann Arbor at a meeting held December 14, 1959 and that the width of lots is in compliance with requirements of Section 30, Act 172, of 1929, as amended.

Fred J. Looker  
Fred J. Looker, Clerk

February 16, 1960  
February 19, 1960  
February 16, 1960  
OTIS M. SMITH  
D. L. McElroy

COPIES  
Recorder's Office  
Washtenaw County  
Plat of  
Barford Homes Subdivision  
was recorded this 17<sup>th</sup> day of  
February, A.D. 1960 at 12:10 o'clock  
P.M. in 15 plates  
of 3 and 14 pages  
Patricia Newkirk Hardy

SURVEYOR'S CERTIFICATE

I hereby certify that the plat hereon delineated is a correct one and that permanent metal monuments consisting of bars not less than one-half inch in diameter and 36 inches in length, or shorter bars of not less than one-half inch in diameter lapped over each other at least 6 inches with an over-all length of not less than 36 inches, encased in a concrete cylinder at least 4 inches in diameter and 36 inches in depth have been placed at points marked thus (O) as thereon shown at all angles in the boundaries of the land platted, at all the intersections of lines of streets, and at the intersections of lines of streets with the boundaries of the plat as shown on said plat.

Robert J. Jagow  
Robert J. Jagow  
Registered Land Surveyor # 6998

DESCRIPTION OF LAND PLATTED

The land embraced in the annexed plat of BARFORD HOMES SUBDIVISION a part of the NE 1/4 of Section 10, T3S, R6E, City of Ann Arbor, Washtenaw County, Michigan is described as follows:

Beginning at the E 1/4 corner of Section 10, T3S, R6E, Pittsfield Township, Washtenaw County, Michigan; thence along the east and west 1/4 line of said Section 10, N 89° - 57' W 1996.97 feet; thence N 1° - 44' E 627.27 feet; thence S 89° - 57' E 1370.71 feet; thence S 1° - 46' - 30" W 99.05 feet; thence S 89° - 57' E 627.18 feet to the east line of Section 10; thence along said east line S 1° - 46' - 30" W 528.17 feet to the place of beginning, containing 104 lots numbered 1 through 104 inclusive and one outlet lettered "A".

APPROVAL BY COUNTY PLAT BOARD

This plat was approved on the 11<sup>th</sup> day of February, 1960 by the Washtenaw County Plat Board.

Patricia Newkirk Hardy John H. Flook  
County Register of Deeds County Drain Commissioner  
J. Martin Rempp Herbert G. Loeffler  
Auditor Auditor  
John P. Cook  
John P. Cook  
Auditor