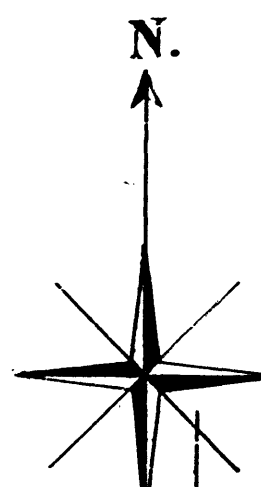


1 OF 1
06/02/1909
ASSESSOR'S PLAT NO. 2.
PAGE 31

ASSESSORS PLAT No. 2

IN THE
CITY OF ANN ARBOR WASHTENAW COUNTY MICHIGAN



Scale 100ft = 1 inch

DEDICATION

Know all men by these presents that I, Samuel W. Beakes, City Assessor of the City of Ann Arbor Michigan, being duly authorized by resolution passed by the Common Council of the City of Ann Arbor Michigan on April 30th 1909 and in accordance with the provisions of Act No. 91 of the Public Acts of 1839, have caused the land embraced in the annexed plat to be surveyed, laid out and platted, to be known as Assessors Plat No. 2 in the City of Ann Arbor Washtenaw County Michigan.

Signed and Sealed in presence of
Samuel Crocker
County Assessor

Samuel W. Beakes [LS]
City Assessor

SURVEYORS CERTIFICATE

I hereby certify that the plat hereon delineated is a correct one and that permanent monuments consisting of iron pipe 3/4" x 40" have been planted at all points marked thus "O" as thereon shown at all angles in the boundaries of the land platted and at all intersections of streets.

E. M. Green
Surveyor

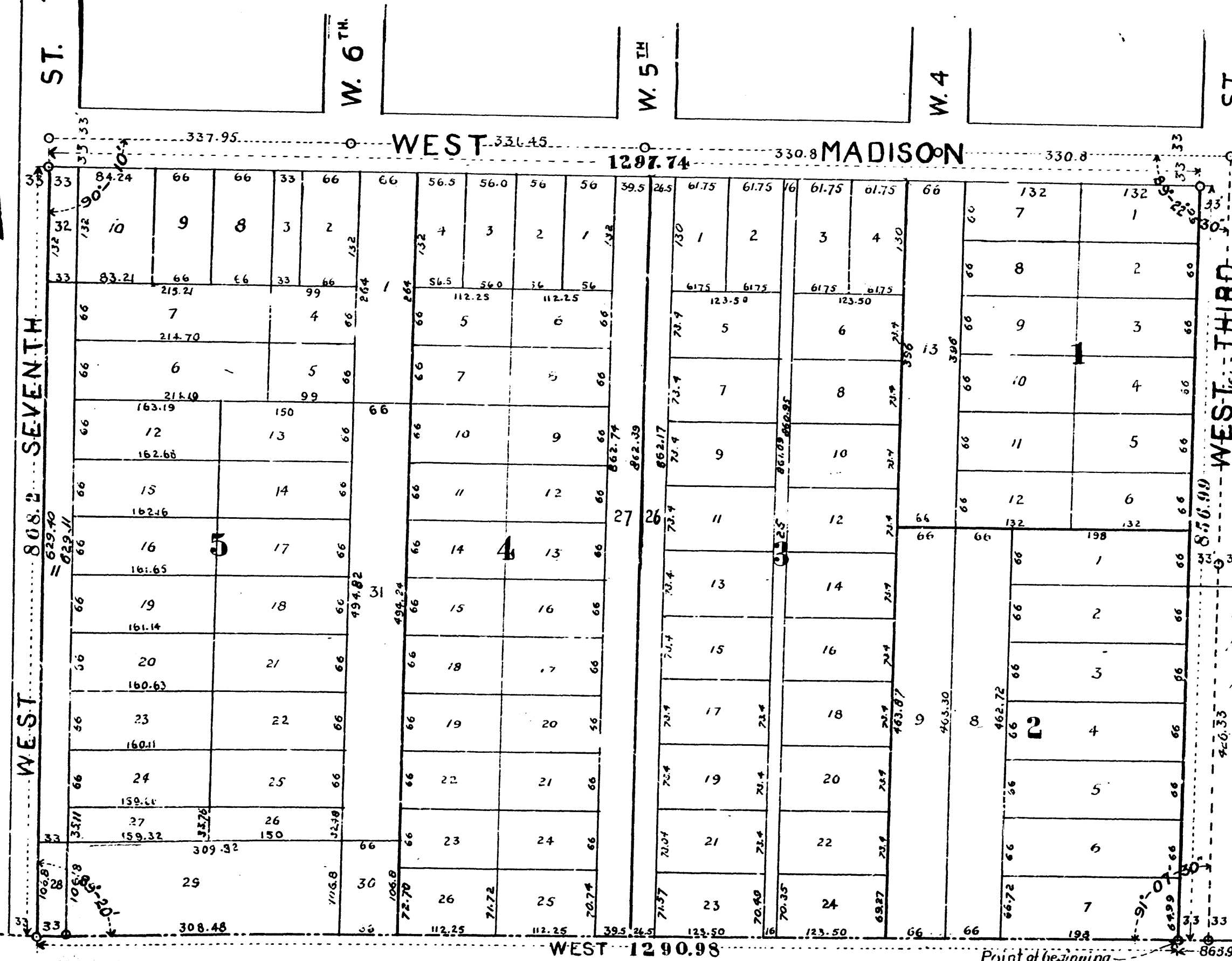
State of Michigan }
County of Washtenaw } ss.

On this 12th day of May A.D. 1909 before me a Notary Public in and for said County personally came the above named Samuel W. Beakes, known to me to be the City Assessor of the City of Ann Arbor Michigan, and the person who executed the above dedication, and acknowledged the same to be his free act and deed as Assessor of the City of Ann Arbor as duly authorized by the Common Council by resolution passed April 30th A.D. 1909.

Paul Grauer
Notary Public Washtenaw County Michigan
My Commission expires Dec. 27th 1911.

DESCRIPTION

Commencing at a point on the Section Line between Sections 29 and 32 Township 2 South, Range 6 East, Meridian of Michigan, and 865.96 feet West of the Quarter Corner between Sections 29 and 32 Township and Range above named; thence West along the Section Line, above named, twelve hundred and ninety and ninety eight hundredths (1290.98) feet to the center of West Seventh Street produced (said street already platted on William S. Maynard's 3rd Addition, and recorded in the Office of the Register of Deeds of Ann Arbor Washtenaw County Michigan); thence North at a North Ely angle of 89°-20' eight hundred and sixty eight and two tenths (868.2) feet to the South side of West Madison Street (said street already platted and on file as above); thence Easterly at a South Ely angle of 90°-10' along the South side of West Madison Street, twelve hundred and ninety seven and seventy four hundredths (1297.74) feet to the intersection of the West side of West Third Street (said street already platted on W. S. Maynard's 2nd Addition and recorded in the Office of the Register of Deeds at Ann Arbor Washtenaw County Michigan); thence S'ly at a South Westerly angle of 89°-22'-30" eight hundred fifty six and ninety nine hundredths (856.99) feet to place of beginning.



Examined and Approved
Henry J. ...
Deputy Auditor General

REGISTER'S OFFICE
Washtenaw County
RECEIVED for Record, the 2nd
day of June A. D. 1909.
at 11:20 o'clock
in Lib. 2 of Plate on Page 31
Henriette J. ...
Register of Deeds

SECTION LINE between Sections 29 and 32 Tp. 2 S. R. 6 E. Mer. of Mich. Sec. 29
Point of beginning 865.96 feet West of the Quarter Corner between Sections 29 and 32 Tp. 2 S. R. 6 E. Meridian of Michigan
Sec. 32