

April 21, 2013

**ADDENDUM NO. 2
TO THE
INVITATION TO BID(ITB) - 4333
ARBOR OAKS PH. II WATERMAIN REPLACEMENT PROJECT
FOR THE
CITY OF ANN ARBOR, MICHIGAN**

The following changes, additions, and/or deletions shall be made to the Bid Documents for the Arbor Oaks Ph. II Watermain Replacement Project, for the City of Ann Arbor, Michigan, Invitaion To Bid No. ITB - 4333.

The information contained herein shall take precedence over the original documents and all previous addenda, and is appended thereto. **This Addendum includes 4 page(s) and 1 drawing(s).**

The Contractor is to acknowledge receipt of this Addendum No. 1 on page P-1 of the Bid Documents prior to submitting its Proposal.

Changes in the Bid Documents which are outlined below are referenced to a page or drawing in which they appear conspicuously. The Bidder is to take note in its review of the documents and include these changes as they affect work or details in other areas not specifically referenced here.

- Item #1: Contract Documents, BF-1 through BF-3;
 Replace pages BF-1 through BF-3 with the attached revised BF-1(ADD-2-2)
 through BF-3(ADD -2 -4).
- Item #3: Contract Plan Set; replace plan sheet # 4 with the attached plan sheers.
 The revised plan show added Trench Detail I, Modified.

BID FORM

Section 1 - Schedule of Prices

Item	Description	Unit	Estimated Quantity	Unit Price	Total Cost
114	Type A Lighted Arrow Board, Furnished & Operated	EA	2	\$	\$
130	Protective Fencing	LF	4220	\$	\$
135	Tree Removal, 8" and larger	EA	6	\$	\$
140	Exploratory Excavations (0-10deep)	EA	4	\$	\$
201	Project Supervision, Max. \$ 30,000	LS	1	\$	\$
202	General Conditions, Max. \$ 60,000	LS	1	\$	\$
203	Minor Traffic Control, Modified, Max. \$ 20,000	LS	1	\$	\$
204	Audiovisual Tape Coverage	LS	1	\$	\$
208	Cold Milling Pavement	TON	3580	\$	\$
212	Subgrade Undercutting - Type II	CY	800	\$	\$
213	Temporary 4 inch or 6 inch Water Main Line Stop	EA	4	\$	\$
220	HMA Pavement Base Course 13A	TON	1550	\$	\$
221	HMA Pavement Leveling Course 13A	TON	450	\$	\$
222	HMA Pavement Wearing Course 13A	TON	1250	\$	\$
223	HMA Pavement Bike Path 13A	TON	60	\$	\$
230	Remove Concrete Curb or Curb & Gutter - Any Type	LF	2770	\$	\$
231	Remove Concrete Sidewalk & Driveways - Any Thickness	SF	7100	\$	\$
232	Concrete Curb or Curb & Gutter - Any Type	LF	1550	\$	\$
233	Concrete M-opening High Early	LF	1250	\$	\$
234	4 -Inch Concrete Sidewalk	SF	822	\$	\$
235	6 -Inch Concrete Sidewalk, Ramp, or Drive	SF	276	\$	\$
236	6 -Inch Concrete Sidewalk, Ramp, or Drive High Early	SF	5386	\$	\$
237	8-Inch Concrete Sidewalk, Ramp, or Drive High Early	SF	612	\$	\$
240	Detectable Warning, Cust In Place	SF	20	\$	\$
241	Adjust Structure Cover	EA	24	\$	\$
242	Adjust Curb Inlet Structure Cover	EA	15	\$	\$
243	Adjust Monument Box, Gate Valve Box or Gas Box	EA	5	\$	\$
244	Structure Covers	LBS	10000	\$	\$
251	Abandon Fire Hydrant	EA	5	\$	\$
252	Sewer Bulkhead, 4-inch through 18-inch Diameter	EA	4	\$	\$
254	6-inch Wrapped Underdrain	LF	1200	\$	\$
260	Sand Subbase Course, Class II - CIP	CY	340	\$	\$
261	21AA Limestone - C.I.P.	CY	460	\$	\$
262	Aggregate Base Course, 21AA - C.I.P.	CY	1500	\$	\$
270	"No Parking" Signs	EA	97	\$	\$

TOTAL THIS PAGE \$ _____

(Also Enter on BF-3)

BID FORM

Section 1 - Schedule of Prices

Item	Description	Unit	Quantity	Unit Price	Total Cost
271	Portable, Changeable Message Sign, Furn. & Oper.	EA	2	\$ _____	\$ _____
272	Plastic Drum - Lighted, Furnished and Operated	EA	120	\$ _____	\$ _____
273	Type III Lighted Barricade, Furnished & Operated	EA	5	\$ _____	\$ _____
274	Temporary Type B Signs	SF	350	\$ _____	\$ _____
280	Watering and Cultivating First Season	LS	1	\$ _____	\$ _____
281	Watering and Cultivating Second Season	LS	1	\$ _____	\$ _____
282	Planting, Tree	EA	4	\$ _____	\$ _____
283	Anemone Canadensis (Canada Anemone) Plug	EA	96	\$ _____	\$ _____
284	Carex Muskingumensis (Umbrella Sedge) Plug	EA	44	\$ _____	\$ _____
285	Iris Virginica (Blue Flag Iris) Plug	EA	123	\$ _____	\$ _____
286	Eupatorium Perfoliatum (Boneset) Plug	EA	21	\$ _____	\$ _____
287	Lobelia Siphilitica (Great Blue Lobelia) Plug	EA	141	\$ _____	\$ _____
288	2 Inch Mulch	SYD	1900	\$ _____	\$ _____
289	Rain Garden Site Preparation	SYD	1900	\$ _____	\$ _____
290	Mulch Blanket, Modified	SY	7000	\$ _____	\$ _____
320	12 inch Class IV RCP Trench Detail I	LF	65	\$ _____	\$ _____
321	6 inch Schedule 40 PVC Pipe, Trench Detail I	LF	60	\$ _____	\$ _____
367	Single Inlet	EA	3	\$ _____	\$ _____
368	Double Inlet	EA	1	\$ _____	\$ _____
385	Sewer Pipe Abandonment	LF	65	\$ _____	\$ _____
386	Sewer Structure Abandonment	EA	4	\$ _____	\$ _____
391	Pipe Undercut & Refill (6AA)	CY	250	\$ _____	\$ _____
400	12 inch, Class 50 DIP w/polywrap, TD-I, Modified	LF	1100	\$ _____	\$ _____
401	8 inch, Class 50 DIP w/polywrap, TD-I, Modified	LF	1980	\$ _____	\$ _____
402	6 inch Class 50 DIP w/polywrap, TD-I, Modified	LF	42	\$ _____	\$ _____
403	4 inch Class 50 DIP w/polywrap, TD-I, Modified	LF	100	\$ _____	\$ _____
404	8 inch, Class 50 DIP w/polywrap, TD-VI	LF	380	\$ _____	\$ _____
413	12" 22-1/2° Bend	EA	3	\$ _____	\$ _____
414	12" 45° Bend	EA	4	\$ _____	\$ _____
416	8" 22-1/2° Bend	EA	1	\$ _____	\$ _____
417	8" 11-1/4° Bend	EA	3	\$ _____	\$ _____
419	8" 45° Bend	EA	21	\$ _____	\$ _____

TOTAL THIS PAGE \$ _____

(Also Enter on BF-3)

BF-2

ADD - 2 - 3

BID FORM

Section 1 - Schedule of Prices

Item	Description	Unit	Estimated Quantity	Unit Price	Total Cost
420	8" x 6" Reducer	EA	10	\$ _____	\$ _____
422	12" x 8" Reducer	EA	3	\$ _____	\$ _____
432	8" x 8" x 8" Tee	EA	6	\$ _____	\$ _____
433	12" x 12" x 12" Tee	EA	4	\$ _____	\$ _____
434	12" x 12" x 4" Tee	EA	1	\$ _____	\$ _____
435	8" x 8" x 6" Tee	EA	1	\$ _____	\$ _____
436	12" x 12" x 8" Tee	EA	2	\$ _____	\$ _____
440	Fire Hydrant Assembly	EA	10	\$ _____	\$ _____
442	12" Gate Valve-in Box	EA	2	\$ _____	\$ _____
443	8" Gate Valve-in Box	EA	5	\$ _____	\$ _____
444	4" Gate Valve-in- Box	EA	1	\$ _____	\$ _____
448	12" Gate Valve-in Well	EA	2	\$ _____	\$ _____
449	8" Gate Valve-in Well	EA	2	\$ _____	\$ _____
460	Excavate and Backfill for Water Services and Leads	LF	1035	\$ _____	\$ _____
481	Water Main Pipe Abandonment	LF	3437	\$ _____	\$ _____
482	Gate Valve-in-Box Abandonment	EA	3	\$ _____	\$ _____
483	Gate Valve-in-Well Abandonment	EA	3	\$ _____	\$ _____
595	Hot-Applied, Thermoplastic Pavement Markings 6 inch Yellow	LF	535	\$ _____	\$ _____
597	Hot-Applied, Thermoplastic Pavement Markings 24 inch White	LF	90	\$ _____	\$ _____
703	Inlet Filter	EA	27	\$ _____	\$ _____
800	Silt Fence	LF	2400	\$ _____	\$ _____
805	Transplant Tree Caliper 1" to 3"	EA	2	\$ _____	\$ _____
882	Seeding and Mulching	SY	7000	\$ _____	\$ _____
891	Cleanup & Restoration	LS	1	\$ _____	\$ _____
895	Chain Link Fence	LF	83	\$ _____	\$ _____

TOTAL THIS PAGE \$ _____

TOTAL FROM PAGE BF-1 \$ _____

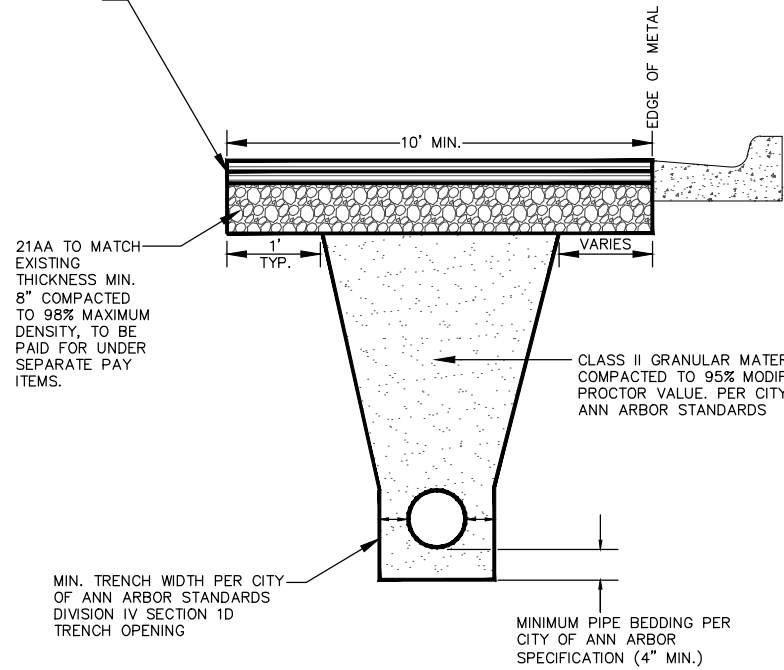
TOTAL FROM PAGE BF-2 \$ _____

TOTAL BASE BID : \$ _____

BF-3

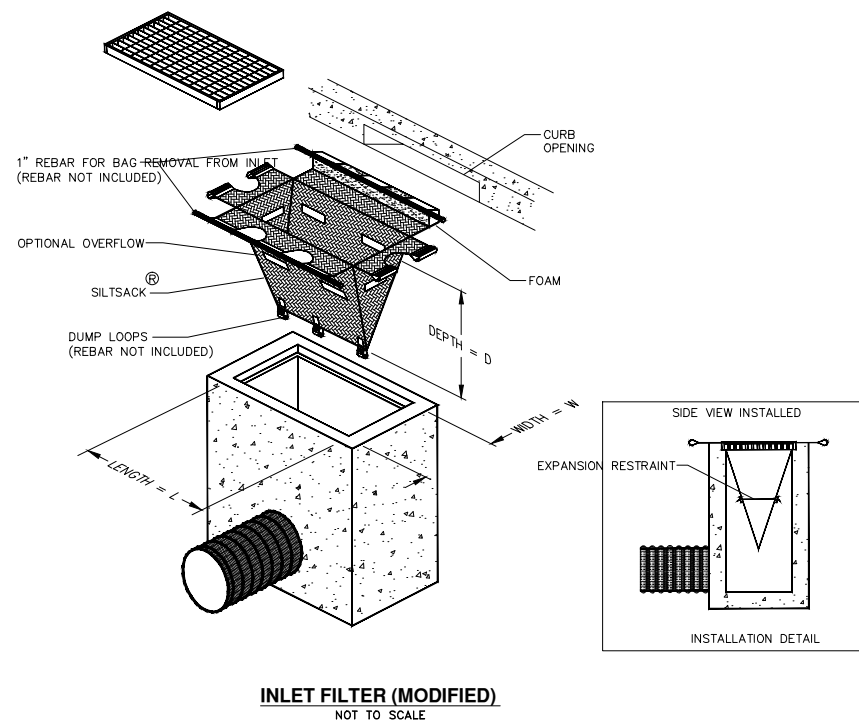
ADD - 2 - 4

BITUMINOUS PAVEMENT, 13A, PER CORRESPONDING ROAD SECTION, MATERIAL TO MATCH EXISTING THICKNESS (MIN. 3.5") PLACED IN LIFTS NOT TO EXCEED 2" IN DEPTH AND COMPACTED TO 92-96% OF THEORETICAL MAXIMUM DENSITY, TO BE PAID FOR UNDER SEPARATE PAY ITEMS.

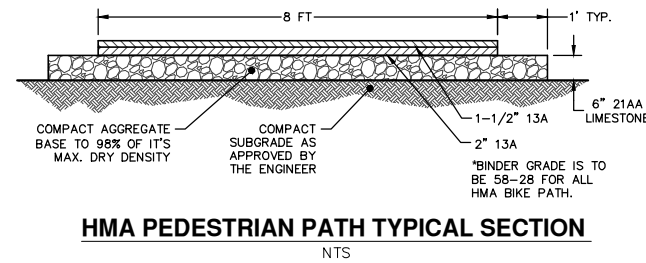


- NOTE: DENSITY TESTING PER CITY OF ANN ARBOR SPECIFICATION
- NOTE: TRENCH DETAILS SHOW TYPE OF BACKFILL AND SURFACE RESTORATION ONLY.
- NOTE: ALL TRENCHING TO CONFORM TO ALL APPLICABLE M.I.O.S.H.A. STANDARDS

UTILITY TRENCH - TYPE I MODIFIED
NOT TO SCALE

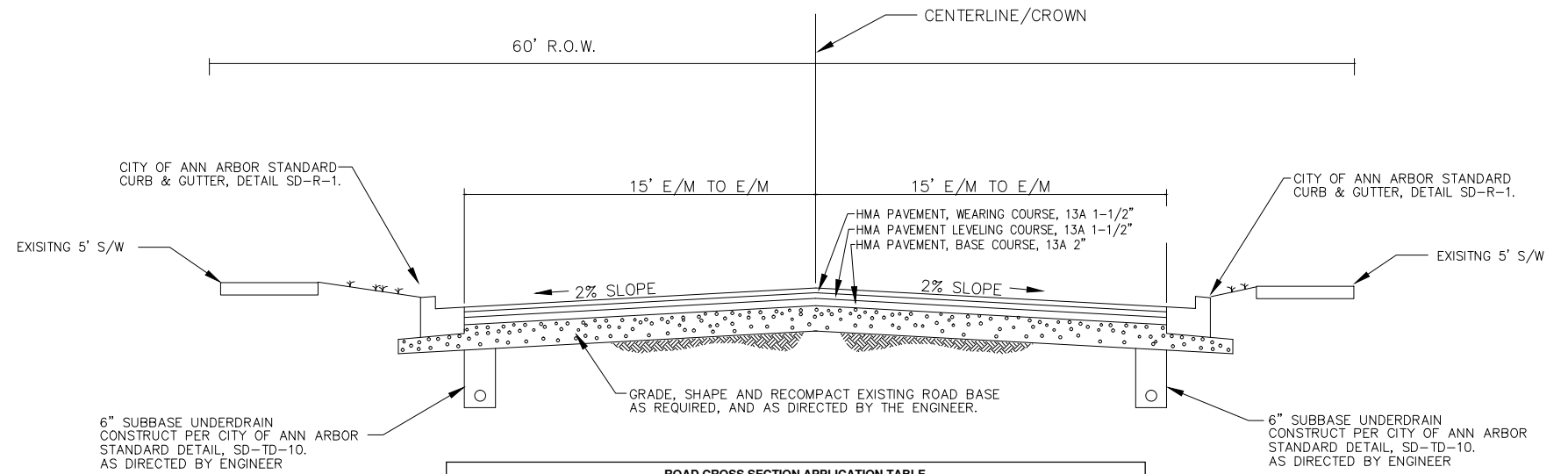


INLET FILTER (MODIFIED)
NOT TO SCALE



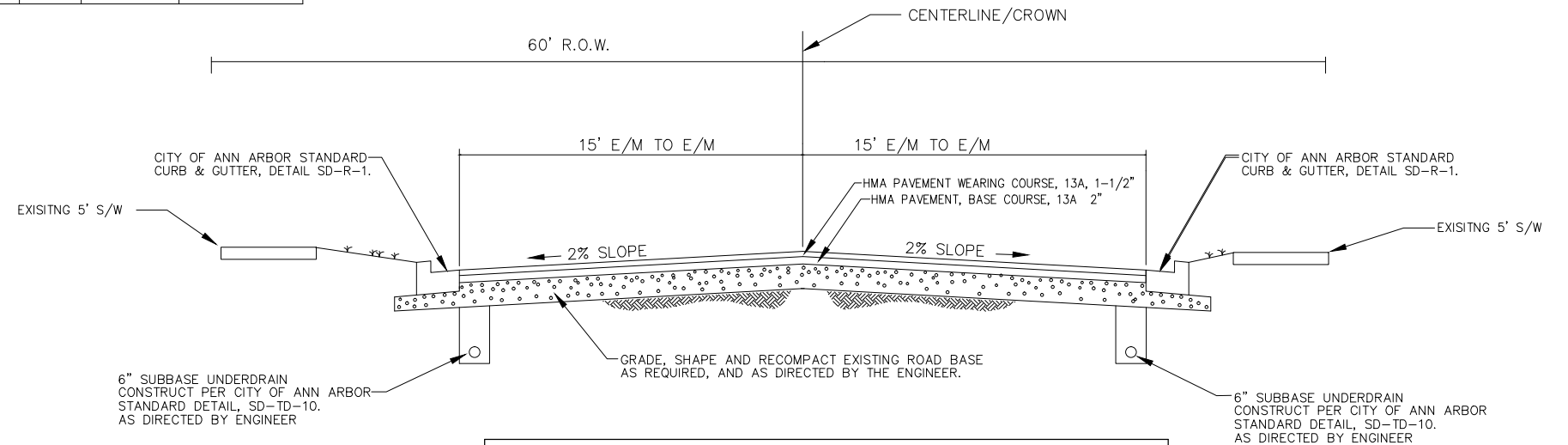
HMA PEDESTRIAN PATH TYPICAL SECTION
NTS

PEDESTRIAN PATH - HMA APPLICATION TABLE					
HMA MIX	RATE OF APPLICATION	THICKNESS (INCHES)	AWI (MIN)	BINDER	LOCATION/NOTES
13A	165/220 LB/SYD	3.5	220 (TOP)	PG 58-28	TWO LIFTS
Bond Coat SS-1h	0.05 GAL/SYD	-	-	-	INCLUDE IN COST OF HMA ITEM



ROAD CROSS SECTION APPLICATION TABLE					
MIX	RATE OF APPLICATION	THICKNESS (INCHES)	AWI	BINDER	LOCATION/NOTES
HMA, 13A	165 LB/SYD	1.5 INCH	260	PG 64-28	WEARING COURSE
HMA, 13A	165 LB/SYD	1.5 INCH	-	PG 64-28	LEVELING COURSE
HMA, 13A	220 LB/SYD	2.0 INCH	-	PG-64-28	BASE COURSE

PROPOSED TYPICAL ROADWAY SECTION
SANTA ROSA DRIVE AND BRYANT ELEMENTARY SCHOOL (WIDTH VARIES ON BRYANT ELEMENTARY SCHOOL PARKING LOT)
N.T.S.



ROAD CROSS SECTION APPLICATION TABLE					
MIX	RATE OF APPLICATION	THICKNESS (INCHES)	AWI	BINDER	LOCATION/NOTES
HMA, 13A	165 LB/SYD	1.5 INCH	260	PG 64-28	WEARING COURSE
HMA, 13A	220 LB/SYD	2.0 INCH	-	PG-64-28	BASE COURSE

PROPOSED TYPICAL ROADWAY SECTION
LUCERNE CT., BURLINGAME CT., JAY LEE CT., BLAIN CT., AND HARDYKE CT.
N.T.S.



REV	DATE	DESCRIPTION	DRAWN	CHECKED
02	4/18/14	ADDENDUM 02	MAS	IVK
00	2-7-14	BID SET	MS/PDF	IVK

CITY OF ANN ARBOR
PUBLIC SERVICE
301 EAST HURON STREET
ANN ARBOR, MI 48107-8647
734-794-6410
www.aaj.gov



PROJECT MANAGEMENT - PUBLIC SERVICES - CITY OF ANN ARBOR
ARBOR OAKS PHASE II
ROAD SECTION TRENCH DETAIL INLET FILTER DETAIL

SCALE: NTS
DRAWING No. 2013033-4
SHEET No.