

# GUIDE TO THE CITY OF ANN ARBOR ANNEXATION PROCESS

FOR SINGLE-FAMILY AND TWO-FAMILY PROPERTIES

## GENERAL INFORMATION

Annexation is a process by which a parcel is released from the jurisdiction of Ann Arbor, Pittsfield or Scio Township and comes under the jurisdiction of the City of Ann Arbor. During the annexation process, a City zoning classification is assigned to the annexed parcel, replacing the township zoning classification after annexation is complete.

When a property is annexed, the property owner begins receiving City services, such as utilities (when available), fire and police protection, refuse/recycling/compost pick-ups, etc. The residents of the property are also eligible to vote in City elections. The property owner begins paying City property taxes in the calendar year following annexation.

Typically annexation is initiated by property owners wishing to connect to City water or sanitary sewer. The State of Michigan and the Washtenaw County Health Department do not recognize private septic systems as an acceptable means of sewage disposal when public sewers are available. Therefore, the construction of a new house on a township parcel, within the ultimate City boundary, requires annexation into the City of Ann Arbor to connect to public utilities. *(See page 6 for more information about the ultimate City boundary.)*

When existing septic systems fail and no public sewer is available, the County Health Department may require a property owner to correct the problem by pumping and hauling waste, excavating down to sand and building a new system, or requesting variances from the County Health Board.

## HOW TO APPLY FOR ANNEXATION AND ZONING

Property owners must submit an application (known as a "petition") for annexation and an

application for zoning classification, to the City **Planning and Development Services Unit (734-794-6265)**. Petition forms are available on the City's website, [www.a2gov.org/planning](http://www.a2gov.org/planning). The annexation and zoning petitions are processed together and require action by the City Planning Commission and City Council. Persons holding a land contract may apply on behalf of a property owner with the owner's written authorization.

### **Annexation Petition and Release Fees (Aug. 2011)**

- **City of Ann Arbor (734-794-6265)** filing fee for annexation and zoning of single or two-family residential under 2 acres: **\$615**

#### **AND**

- **Ann Arbor Township (734-663-3418)** release fee for properties under 5 acres: **\$400**
- **Pittsfield Township (734-822-3120)** minimum release fee: **\$50** [\$10 per acre up to 25 acres]
- **Scio Township (734-369-6400)**: no release fee

Subject to change. Contact Planning and Development Services for a current list of fee schedules.

## Review Process

The Planning and Development Services Unit will forward a copy of the annexation petition to the appropriate township, along with any required township filing fees. Once the annexation and zoning petitions are filed, a City Planning Commission public hearing will be scheduled and improvement charges will be researched and provided to the petitioner *(see page 4 for more information about improvement charges)*. The Planning Commission makes a recommendation to City Council on the annexation and zoning request at the same meeting at which the public hearing is held. City Council, however, may only act on the annexation petition following the Planning Commission public hearing, because the property is not yet in the City's jurisdiction and therefore cannot yet be zoned.

---

Following City Council approval of the annexation and release of the property by the Township, both annexation resolutions (City and Township) are forwarded to the State of Michigan by the City Clerk. The property owner is mailed a welcome packet containing contact information for all City services units and the services they provide. Review and approval by the State of Michigan may take 3 to 6 months or longer.

Once the City Clerk is notified in writing of the State of Michigan's approval, the property is considered to be annexed to the City. It is the property owner's responsibility to check that all available City services are being received once annexation is complete.

Following notification of the State's approval,

**Help, I need water and sanitary sewer right away!**

- File annexation and zoning petitions in the Planning and Development Services Unit.
- Sign a water and/or sanitary sewer agreement in the Public Services Area, pay appropriate charges and fees. See *"Obtaining Public Utilities"* on page 4.
- City Council grants special permission to hook up before the annexation is complete
- Obtain necessary permits to connect to City utilities.
- Complete annexation and zoning process.

Planning and Development Services schedules the zoning petition for City Council consideration. According to the City Charter, zoning changes require "readings" at City Council, called first reading and second reading at two separate meetings. City Council also holds a public hearing at the time of second reading. The entire annexation and zoning process is complete after the second reading of the zoning petition is approved by City Council.

## ROLES OF CITY SERVICE UNITS

The following City service units assist in the annexation and zoning process:

**Planning and Development Services Unit (734-794-6265)** – Coordinates the review process by distributing the petitions to other City service units and the appropriate Township, collecting comments from other City service units, sharing information with the petitioner/property owner, and preparing a staff report for the City Planning Commission. The Planning and Development Services Unit recommends a zoning classification based upon the master plan for the area and the surrounding zoning districts and land uses and verifies that any existing structures on a property will comply with the recommended zoning district requirements. Planning and Development Services also schedules City Council action on the annexation and zoning petitions.

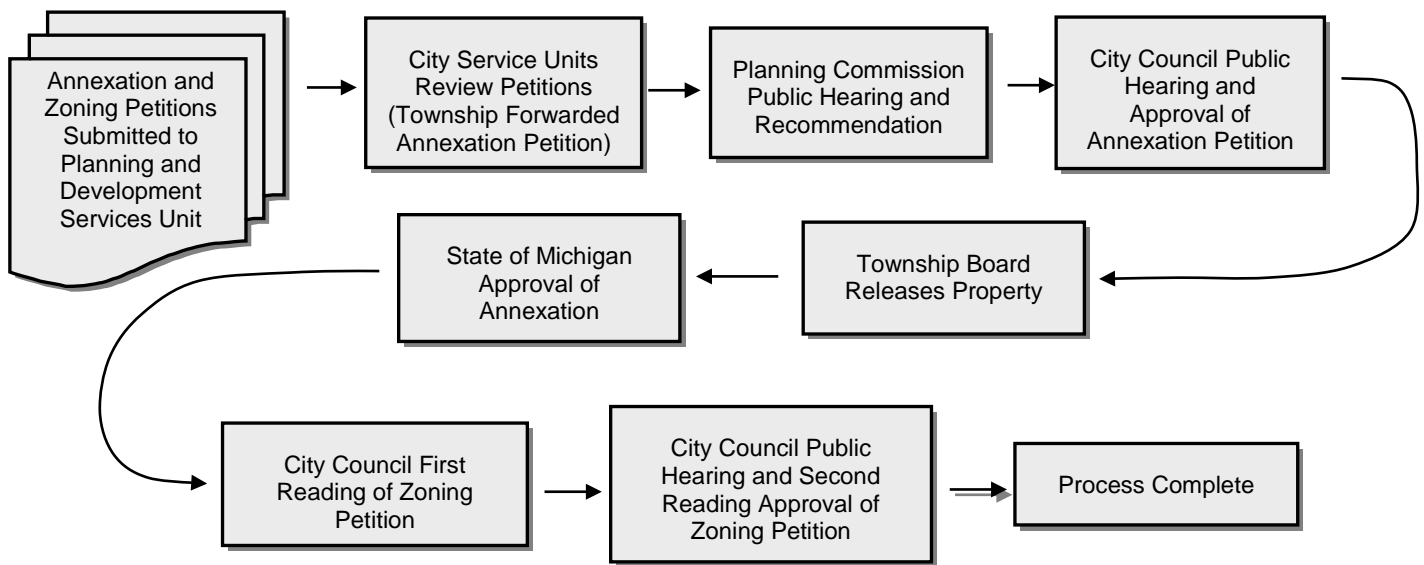
**Permit Desk (734-794-6267)** – After annexation is approved, Planning and Development Services' Permit Desk issues most types of construction-related permits, such as plumbing, electrical, mechanical, building and grading.

**Assessor Services Unit (734-794-6530)** – Reviews the property description and owner information in preparation for adding the new property to the official City records and documents the status of the petition. After annexation, the Assessor Services Unit assigns a tax identification code and periodically assesses the property's value.

**Systems Planning Unit (734-794-6430)** – Calculates any outstanding improvement charges levied against the property for existing public improvements that benefit the property. This information is forwarded to the petitioner/property owner by the Planning and Development Services Unit. If water, sanitary sewer or storm sewer mains do not exist to serve the property, Systems Planning can explain the options and procedures for new utility main construction.



## ANNEXATION AND ZONING PROCESS FLOW CHART



### OBTAINING PUBLIC UTILITIES (WATER, SANITARY SEWER, STORM SEWER)

Properties in need of water utility connections should review the steps posted online at [www.a2gov.org/WaterUtilityConnections](http://www.a2gov.org/WaterUtilityConnections) and contact the **Public Services Area (734-994-2666)**. In many cases property owners will contact Public Services after the annexation process is complete. However a property owner may enter into a sewer or water service agreement with the City for immediate connection, but only after the annexation and zoning petitions are filed with the Planning and Development Services Unit. Then, Public Services will seek early connection approval from City Council while the annexation is in process. For early connection (while still in the review process), the property owner is required to sign an agreement to pay a City utility rate that is double the standard rate and a fee based on the pro-rated City tax rate for the year until the property is annexed. -

There are specific fees for individual services regardless of when a property received public utility connection. *Water service tap fees* and *meter set fees* cover the time and materials to

physically tap into the City's water main, set the curb box and water meter. A *connection charge* covers the property's fair share of the capital costs of the water distribution system and the sanitary sewer system. Property owners are responsible for providing all materials and work, done by a licensed contractor, from the curb box to the building in compliance with current construction safety standards, including any required permits.

*Sewer tap fees* for sanitary or storm sewer cover the time and materials to physically tap into the City's sanitary or storm sewer system. Property owners are responsible for providing all materials and work, done by a licensed contractor, from the mains located in the street to the building, including any required permits.

If sewer mains are not available at the time of annexation, properties should continue to use the current method of sewage disposal. Once sewer mains are installed, City properties served by this utility have 90 days to connect.

Detailed explanations and schedules of all fees and permits, which are separate from improvement charges, are posted online at [www.a2gov.org/WaterUtilityConnections](http://www.a2gov.org/WaterUtilityConnections) and are available through the Public Services Area. All

fees must be paid before taps and inspections are scheduled. Annexation and zoning approval does not include approval of sanitary sewer and water connections. Please refer to the Public Services Area, Customer Service Center, 734-794-6320, for more information.

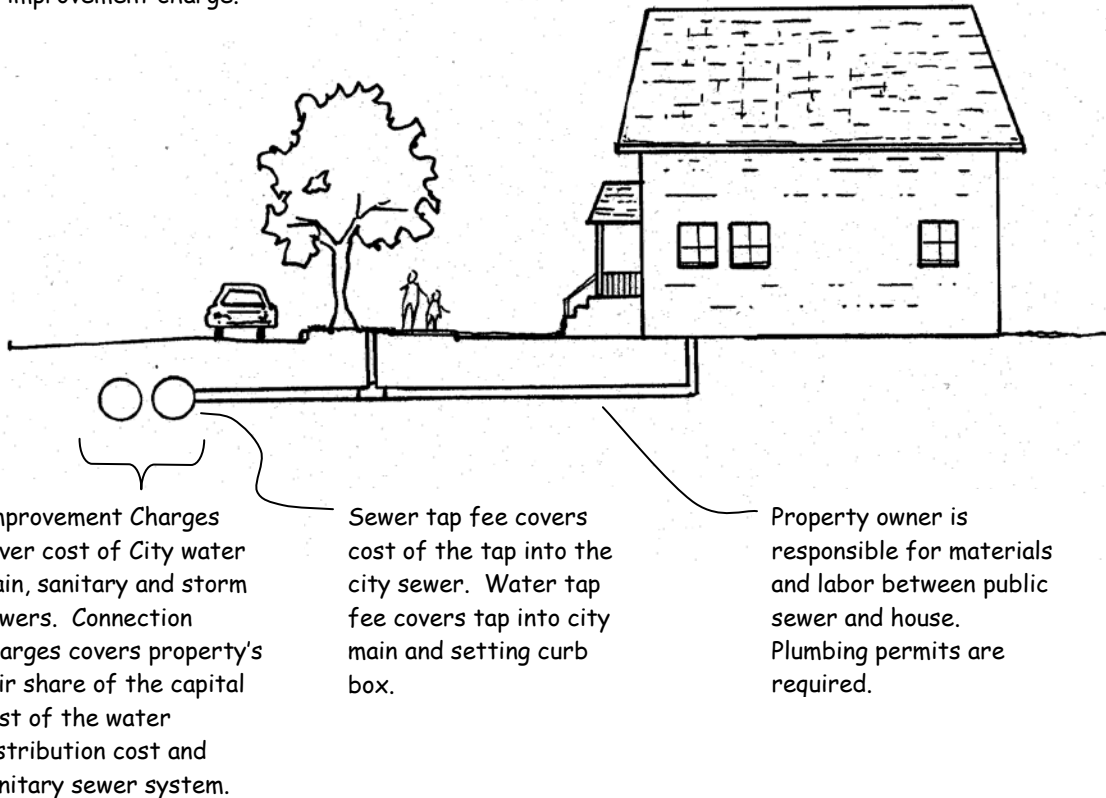
## IMPROVEMENT CHARGES, TAP FEES, AND PERMIT FEES

**Improvement charges** are for existing City utilities or facilities located in the public street fronting the property (sanitary sewer and water mains, storm sewers, curb and gutter, etc.). Petitioners are notified of the charges that will be due for the property. The Planning and Development Services Unit sends a form to the

petitioner asking for acknowledgement of these charges; this signed and notarized form must be returned to Planning and Development Services before City Council action on the annexation. Any improvement charges levied against a property may be paid in one lump sum upon completion of annexation, or for water main and sanitary sewer improvement charges they are due at the time service is taken. If desired, payment may be spread over a timeframe set by City Council, with an additional interest charge included.

**Tap fees and connection charges** are charges to connect a private building to the public utility system. These fees are due in advance of the connection. Individual connections must be approved by Public Services.

Sidewalk, lighting and other public improvements in the right-of-way may be included in an improvement charge.



---

## OTHER CITY SERVICES

After annexation approval is received from the State, the property is eligible to be served by the **Public Services Area - Solid Waste (734-994-2807)**. Refuse, recycling and yard waste pick-up service may not begin automatically, so property owners are encouraged to contact Solid Waste to confirm their new resident status. Solid Waste can provide detailed information about what services are provided, weekly and special event collection schedules, and instructions for how to obtain recycling bins via an e-mail to [customerservice@a2gov.org](mailto:customerservice@a2gov.org) or phoning (734) 794-6320.

Completed annexation also entitles residents to vote in City of Ann Arbor elections. *Voter registration* is not automatically transferred from the former township to the City. Contact the **City Clerk Services Unit (734-974-6140)** to change voter registration.

Parks and Recreation – eligible for resident fees for classes, shelter rentals (see [www.a2gov.org/parks](http://www.a2gov.org/parks)).

---

Information on water and sanitary sewer connections on commercial properties on 3+ residential unit dwellings is posted at [www.a2gov.org/WaterUtilityConnections](http://www.a2gov.org/WaterUtilityConnections), the Commercial Property link. Or email the City at [CustomerService@a2gov.org](mailto:CustomerService@a2gov.org) or visit the Customer Service & Payment Center, open 8 a.m. - 5 p.m. on non-holiday weekdays, located on the main floor of Larcom City Hall, 301 E. Huron, Ann Arbor, MI 48104, phone 734-794-6320.

### Summary of Costs to Annex into the City of Ann Arbor

- **Petition Filing fees** - to process the annexation and zoning petition (collected by the Planning and Development Services Unit and Ann Arbor and Pittsfield Townships).

### Summary of Costs to Connect to Ann Arbor Utilities— also see [www.a2gov.org/WaterUtilityConnections](http://www.a2gov.org/WaterUtilityConnections)

- **Water tap fees, water connection charges, sewer tap fees, and sanitary sewer connection charges** - to connect to the water and sewer mains if public utilities are needed (collected by Public Services).
- **Improvement charges** - for existing utilities in the street fronting the property (collected by the Public Services Area). Paid upon annexation or for water main and sanitary sewers at the time service is taken. Payment may be paid in installments, with added interest.
- **Construction permits (plumbing, etc.)** - to install water or sewer pipes from the main to the building. There may be some work that has to be done inside the building, and a septic system may need to be filled in or removed (collected by Planning and Development Services' Permit Desk).

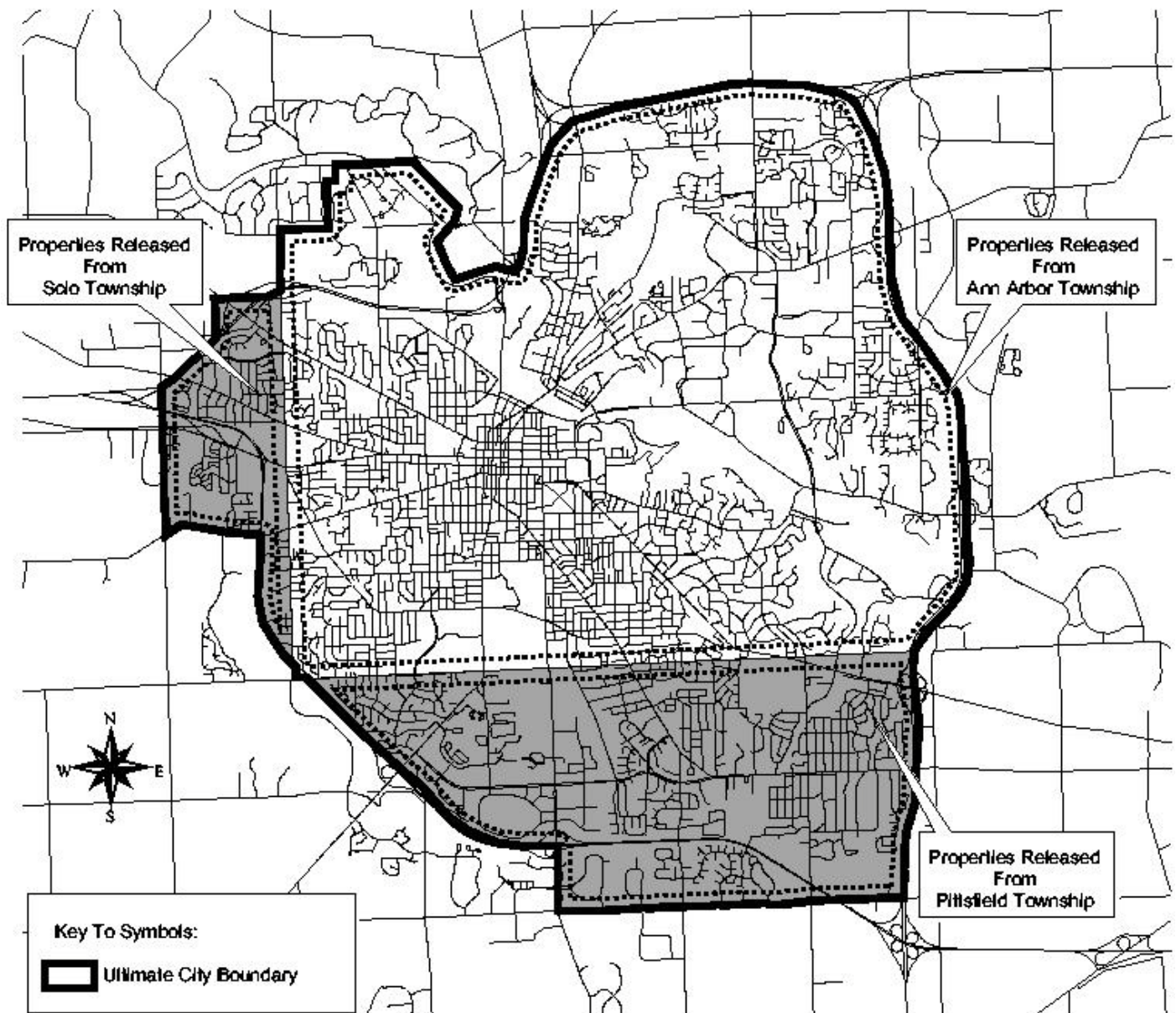
Check with the appropriate City service units for additional information.



## AGREEMENTS BETWEEN THE CITY AND SURROUNDING TOWNSHIPS

The **City of Ann Arbor** has signed policy statements with each of its surrounding townships: **Ann Arbor Township, Scio Township and Pittsfield Township**. In the agreements, the ultimate City boundary is defined by identifying area that eventually will be annexed. The City of Ann Arbor will accept land

located within the defined areas for annexation and the townships generally will release the land upon request. The map below approximately illustrates the ultimate City of Ann Arbor boundary as agreed upon by the three surrounding townships. Full text of the policy statements, and other agreements between the City of Ann Arbor and its surrounding townships, are available through the Planning and Development Services Unit.



Prepared by the Ann Arbor City Planning and Development Services Unit in collaboration with the Parks and Recreation Services Unit, Systems Planning Unit, Solid Waste and Water Utilities, and the Assessor and Clerk Services Units. 6/2001. Updated 3/2003, 12/2004, 2/2005 & 8/2011.