

# ASSESSOR'S PLAT No 19

IN THE  
CITY OF ANN ARBOR,  
WASHTENAW CO, MICHIGAN.

SCALE: 1 IN = 50 FT.

Mar 17-1932  
J. B. Hauer

1 OF 1  
03/18/1932  
PLAT No. 19  
PAGE 13

Mar 24-1932  
J. B. Hauer

### SURVEYORS CERTIFICATE

I hereby certify that the plat hereon delineated is a correct one and that permanent metal monuments of not less than one inch in diameter and fifteen inches in length set in a concrete base at least four inches in diameter and forty eight inches in length have been placed at points marked thus: @ as hereon shown at all angles in the boundaries of the land platted, at all the intersections of streets, intersections of streets and alleys, or of alleys, and at the intersections of streets and alleys with the boundaries of the plat as shown on said plat.

*George H. Sandenburgh*  
Registered Civil Engineer.

Registered in  
Washtenaw  
Assessors Plat No 19  
Mar 32, 1932  
Plat  
John Cummins

Mar 17-1932  
J. B. Hauer

### DEDICATION

KNOW ALL MEN BY THESE PRESENTS: That Herbert W. Crippen, Assessor of the City of Ann Arbor, Washtenaw County, Michigan, by virtue of authority in me vested by Section 51, Act 172 P.A. of 1929, having been duly authorized by the Common Council of the City of Ann Arbor, Washtenaw Co, Michigan, have caused the land described in the annexed plat to be surveyed, laid out and platted, to be known as "Assessors Plat No 19" in the City of Ann Arbor, Washtenaw Co, Michigan, and that the streets and alleys as shown on said plat are hereby dedicated to the use of the public.

*Herbert W. Crippen*  
Assessor of the City of Ann Arbor,  
Washtenaw Co, Michigan.

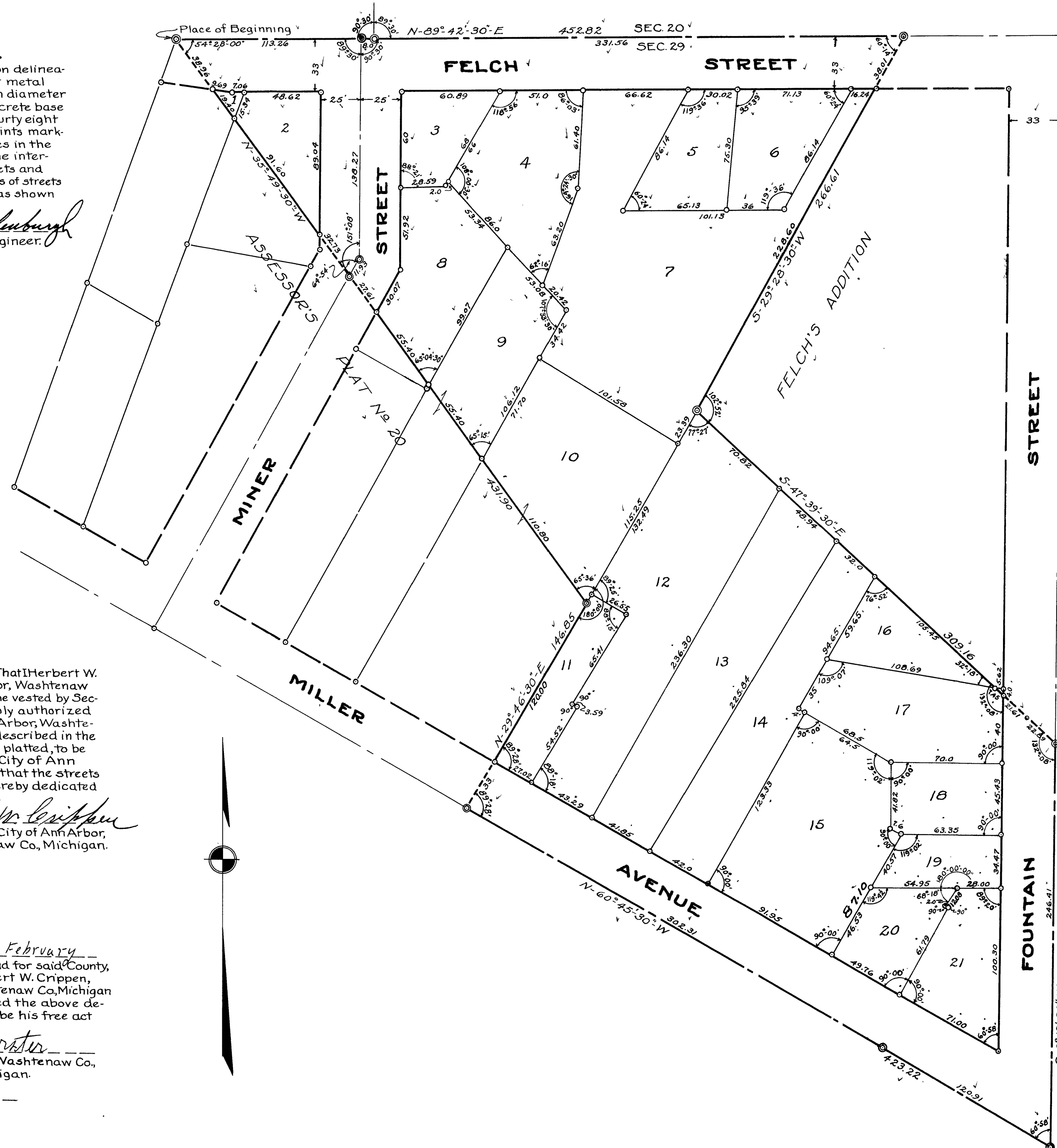
Witnesses  
*Geo. M. Bleckman*  
*Harold B. Scott*

### ACKNOWLEDGEMENT

STATE OF MICHIGAN }  
COUNTY OF WASHTENAW } ss  
On this nineteenth day of February  
A.D. 1932 before me a Notary Public in and for said County, personally came the above named Herbert W. Crippen, Assessor of the City of Ann Arbor, Washtenaw Co, Michigan known to me to be the person who executed the above dedication, and acknowledged the same to be his free act and deed as such Assessor.

*Ernst M. Wroster*  
Notary Public in and for Washtenaw Co,  
Michigan.

My Commission expires \_\_\_\_\_



### CERTIFICATE OF APPROVAL BY BOARD OF COUNTY AUDITORS

Approved by the Board of County Auditors of Washtenaw Co, Michigan this 16 day of Feb 1932

*L. Dushinsky*  
Chairman  
*Walter M. Fowler*  
*Emory L. Brown*

### CERTIFICATE OF MUNICIPAL APPROVAL

This plat was approved by the Common Council of the City of Ann Arbor, Washtenaw Co, Michigan at a meeting held Feb 11 1932

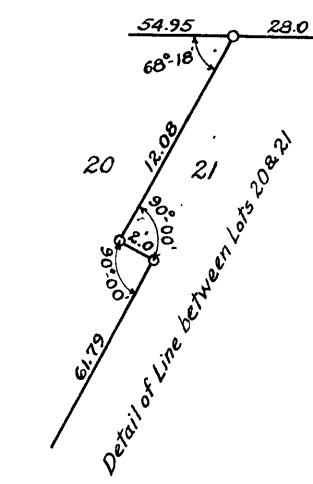
*Arthur W. ...*  
Clerk

This plat was approved by the Board of Public Works of the City of Ann Arbor, Washtenaw County, Michigan at a meeting held May 20 1932

*Arthur W. ...*  
Clerk

### DESCRIPTION

Commencing at the Section Corner which is common to Sections 19, 20, 29 and 30 Ann Arbor Township, Washtenaw Co, Michigan; thence S-89°50'-30"E 667.04 feet to the Center line of Brooks Street; thence N-89°42'-30"E 546.00 feet to the Place of Beginning; thence continuing in the same line produced 452.82 feet; thence S-29°28'-30"W 266.61 feet; thence S-47°39'-30"E, 309.16 feet to the Center line of Fountain Street; thence S-0°12'-30"W, 246.41 feet to its intersection with the Center line of Miller Avenue; thence N-60°45'-30"W along the Center line of Miller Avenue 423.22 feet; thence N-29°46'-30"E, 146.85 feet; thence N-35°49'-30"W, 431.90 feet to the Place of Beginning.



*Traced 12/20/33*  
*Checked 12/21/33*