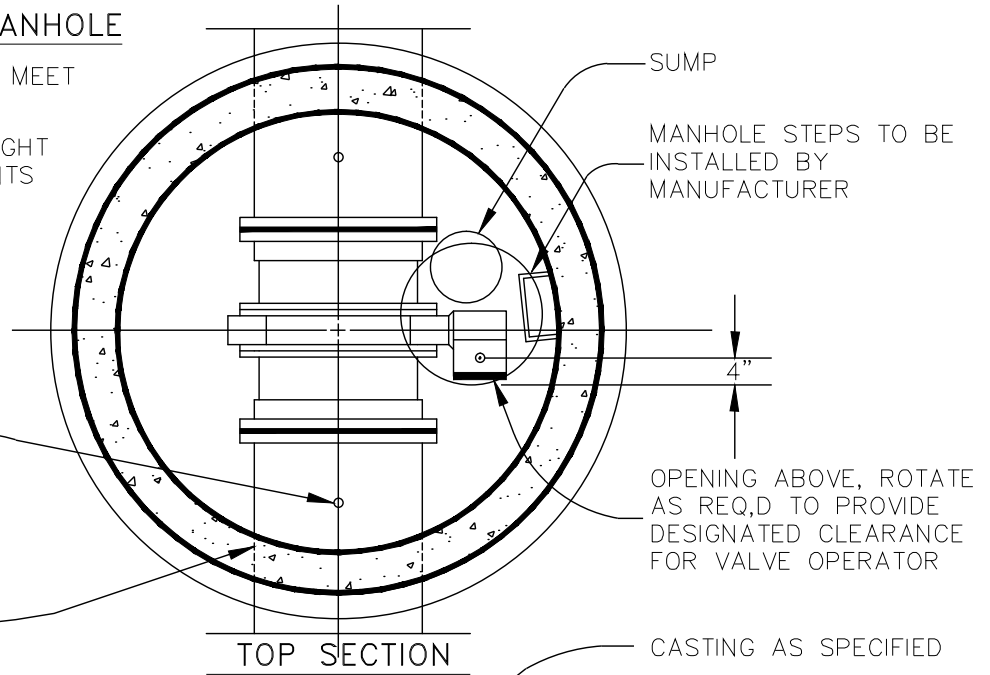


PRE-CAST CONCRETE MANHOLE

1. MANHOLE SECTIONS SHALL MEET ASTM C-478
2. ALL JOINTS MADE WATERTIGHT WITH RUBBER GASKET JOINTS
3. CONE TO BE ECCENTRIC TYPE



1" CORPORATION STOP EACH SIDE OF VALVE BY UTILITIES DEPT. AT CONTRACTOR'S EXPENSE

BRICK & GROUT OPENING AROUND PIPE

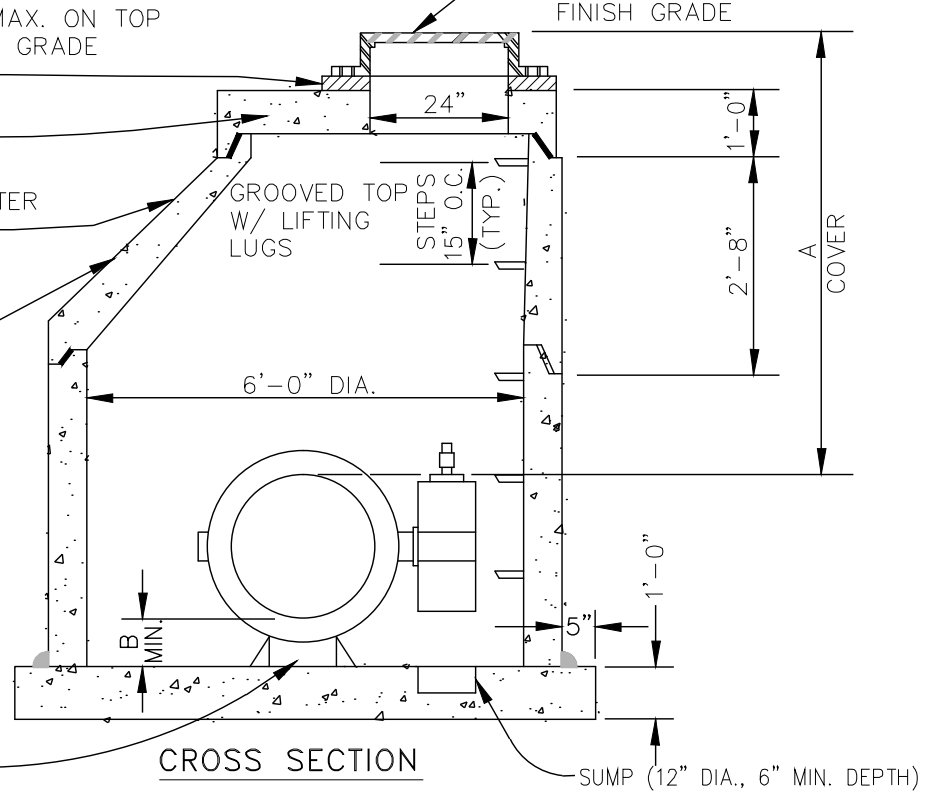
BRICK COURSES, 1 MIN., 3 MAX. ON TOP OF TRANSITION SECTION FOR GRADE ADJUSTMENT

PRECAST SLAB TOP

WHERE REQUIRED FOR GREATER DEPTH, MANHOLE RISER SECTIONS ARE TO BE USED

72" ID TO 48" ID REDUCER TRANSITION SECTION


PIPE SIZE	A	B
24"	6' 6"	6"
20"	6.5'	6"
16"	7'	9.5"



SOLID CONCRETE BLOCK

CROSS SECTION

SUMP (12" DIA., 6" MIN. DEPTH)

REVISIONS					REV. NO.	DR. BY	CH. BY	DATE
PUBLIC SERVICES DEPARTMENT CITY OF ANN ARBOR								
GATE WELL FOR BUTTERFLY VALVES 16" AND LARGER								
DR. BY	DF/DCO	CH. BY	CSS/DF	DRAWING NO.				
SCALE	NONE	DATE	11-6-92	SD-W-4				
INCH	0  1			SHEET NO. ____ OF ____				